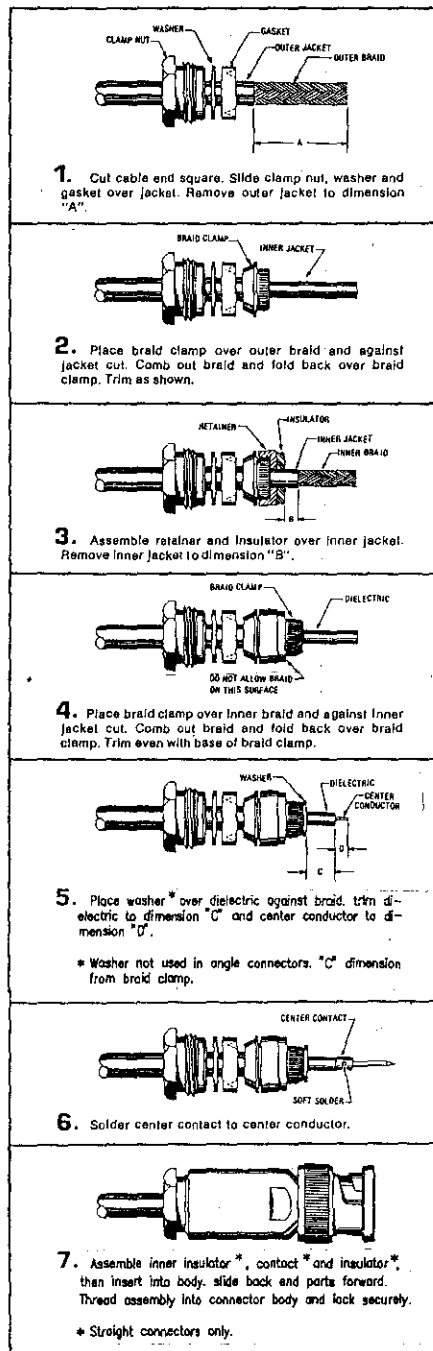


# CABLING PROCEDURE

KINGS

CP-1300

MASTER



TRIM CODE CHART

CODE	A		B		C		D	
	IN.	MM.	IN.	MM.	IN.	MM.	IN.	MM.
1301	.69	17.53	.096	2.43	.210	5.33	.094	2.39
1302	.69	17.53	.125	3.18	.214	5.43	.080	2.03
1303	.69	17.53	.086	2.43	.166	4.22	.141	3.58
1305	.69	17.53	.096	2.43	.102	2.59	.094	2.39
1306	.69	17.53	.096	2.43	.243	6.17	.110	2.82

11/24/92  
MJB

CP-1300 CABLING INSTRUCTIONS  
MASTER LIST

CP CODE	A	B	C	D
1301	.69	.096	.210	.094
1302	.69	.125	.214	.080
1303	.69	.096	.166	.141
1304	.	.	.	.
1305	.69	.096	.102	.094
1306	.69	.096	.243	.110

CABLING PROCEDURE 1300

1. CUT CABLE END SQUARE, PLACE CLAMP NUT, WASHER AND GASKET OVER JACKET. REMOVE OUTER JACKET TO DIMENSION "A".
2. PLACE BRAID CLAMP OVER OUTER BRAID AGAINST JACKET CUT. COMB OUT BRAID AND FOLD BACK OVER BRAID CLAMP, TRIM IN USUAL MANNER.
3. ASSEMBLE RETAINER AND INSULATOR OVER INNER JACKET. REMOVE INNER JACKET TO DIMENSION "B".
4. PLACE BRAID CLAMP OVER INNER BRAID AGAINST INNER JACKET CUT. COMB OUT BRAID AND FOLD BACK OVER BRAID CLAMP, TRIM EVEN WITH BASE OF BRAID CLAMP.
5. PLACE WASHER OVER DIELECTRIC AGAINST BRAID AND TRIM DIELECTRIC TO DIMENSION "C" AND CENTER CONDUCTOR TO DIMENSION "D".
6. SOLDER CENTER CONTACT TO CENTER CONDUCTOR.
7. ASSEMBLE INNER INSULATOR, CONTACT AND OUTER INSULATOR, THEN INSERT INTO BODY. SLIDE BACK END PARTS FORWARD, THREAD ASSEMBLY INTO CONNECTOR BODY AND LOCK SECURELY.

CODE	A	B	C	D	
1301	11/16	.096	.210	3/32	1965-5
1302	11/16	.125	.214	.080	R.B.W 1-5-75 1955-1-9
1303	11/16	.096	.160	.144	1995-39

**KINGS ELECTRONICS CO., Inc.**  
40 MARBLEDAL ROAD  
TUCKAHOE, NEW YORK 10707

# CABLING PROCEDURE 1300

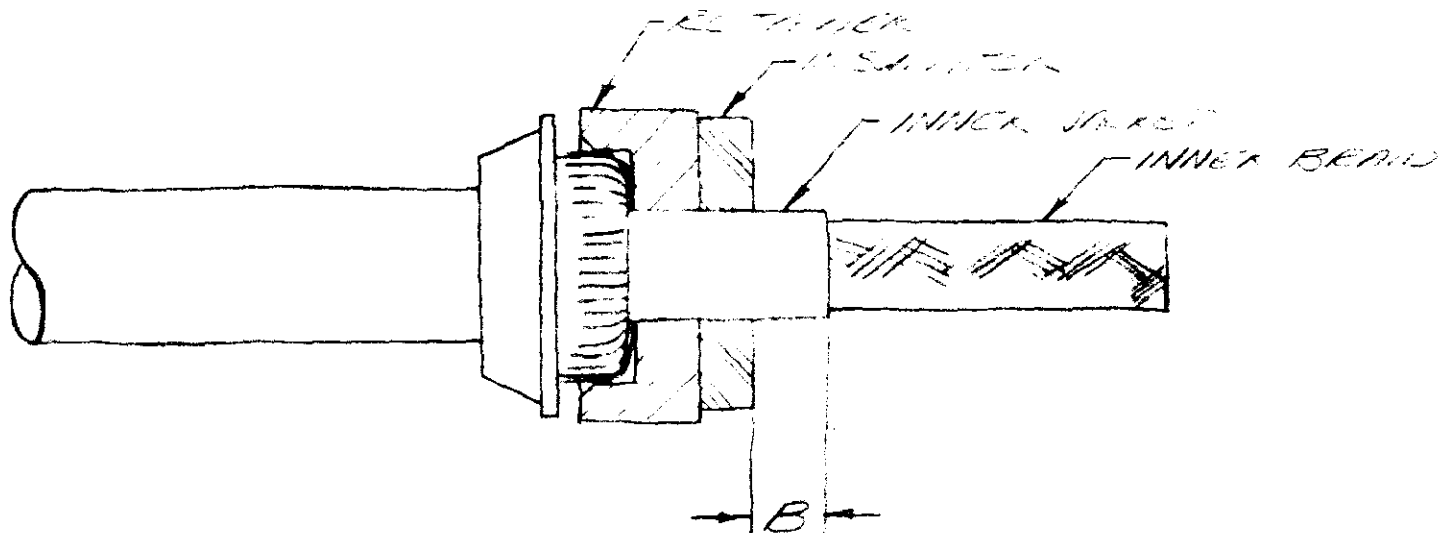
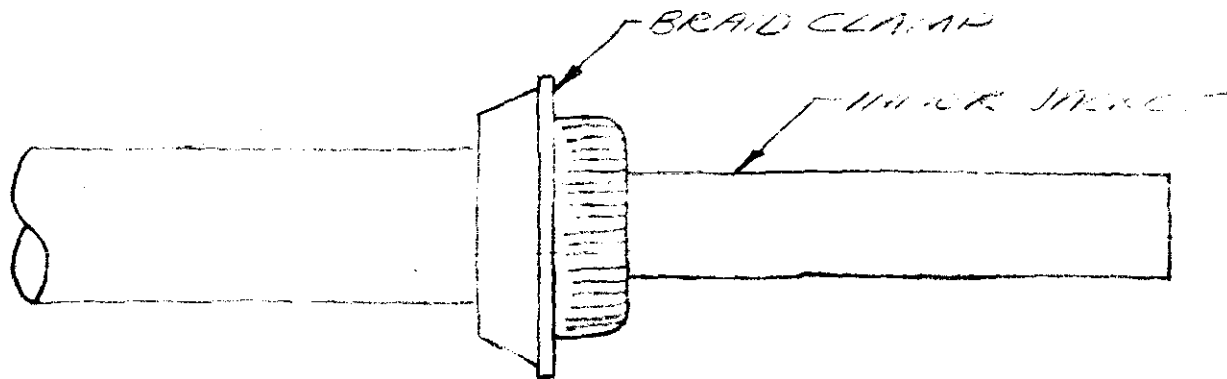
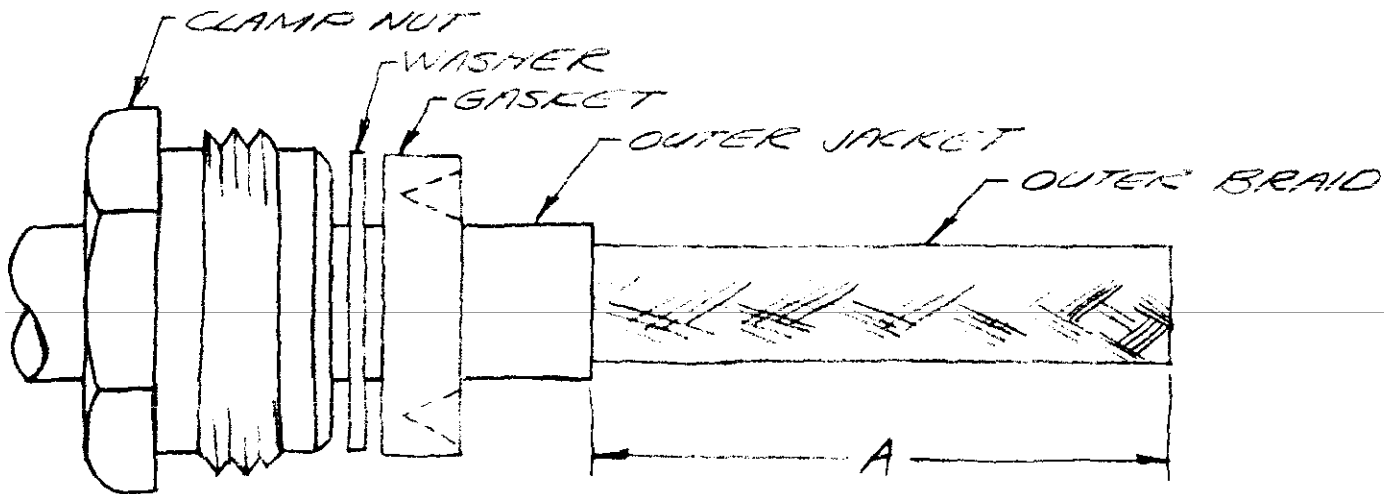
1. CUT CABLE END SQUARE, PLACE CLAMP NUT, WASHER AND GASKET OVER JACKET. REMOVE OUTER JACKET TO DIMENSION "A".
2. PLACE BRAID CLAMP OVER OUTER BRAID AGAINST JACKET CUT. COMB OUT BRAID AND FOLD BACK OVER BRAID CLAMP, TRIM IN USUAL MANNER.
3. ASSEMBLE RETAINER AND INSULATOR OVER INNER JACKET. PULL OFF INNER JACKET TO DIMENSION "E".
4. PLACE BRAID CLAMP OVER INNER BRAID AGAINST INNER JACKET CUT. COMB OUT BRAID AND FOLD BACK OVER BRAID CLAMP. TRIM EVEN WITH BASE OF BRAID CLAMP.
5. PLACE WASHER OVER DIELECTRIC AGAINST BRAID AND TRIM DIELECTRIC TO DIMENSION "C" AND CENTER CONDUCTOR TO DIMENSION "D".
6. SOLDER CENTER CONTACT TO CENTER CONDUCTOR.
7. ASSEMBLE INNER INSULATOR, MOUNTAIN AND OUTER INSULATOR, THEN INSERT INTO BODY. SLIDE BACK END PARTS FORWARD, THREAD ASSEMBLY INTO CONNECTOR BODY AND LOCK SECURELY.

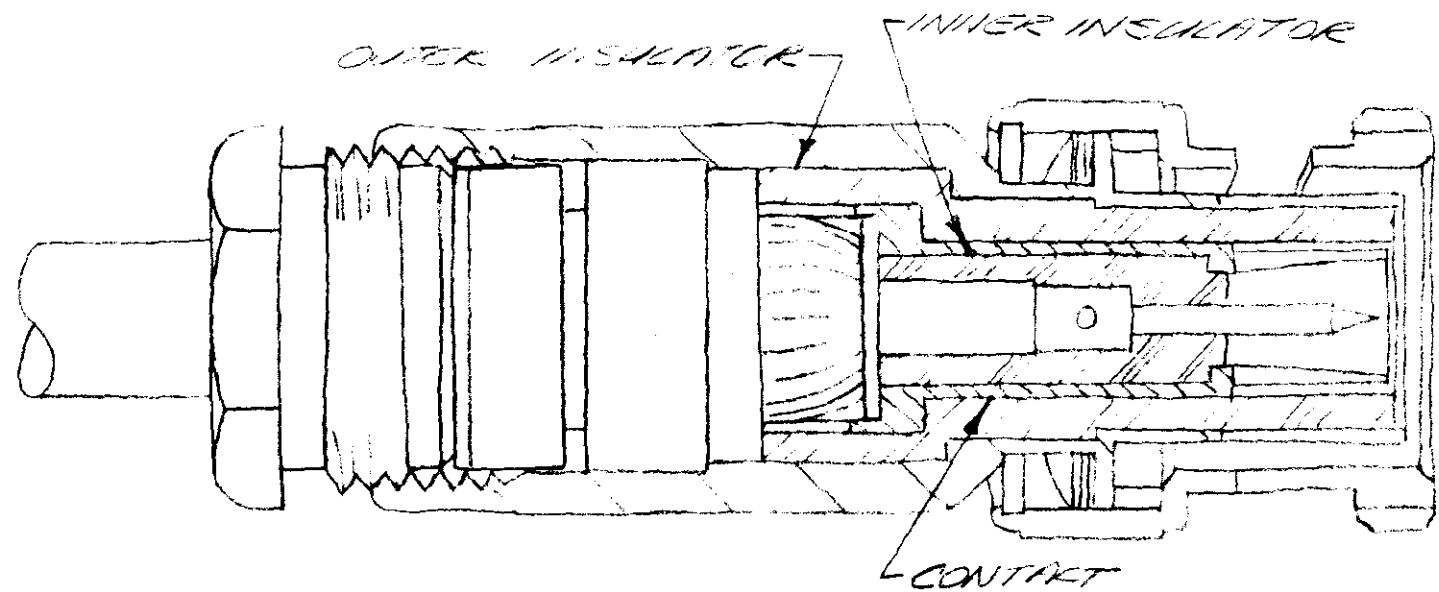
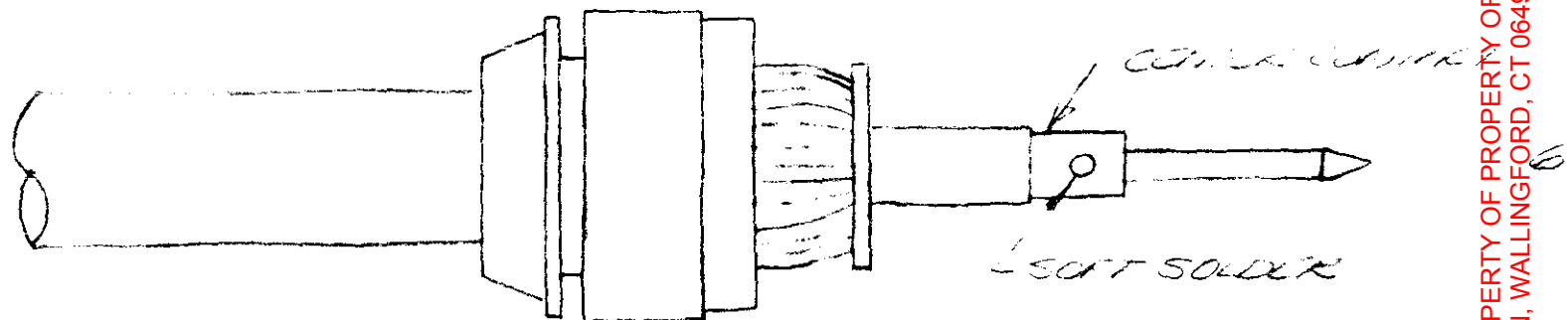
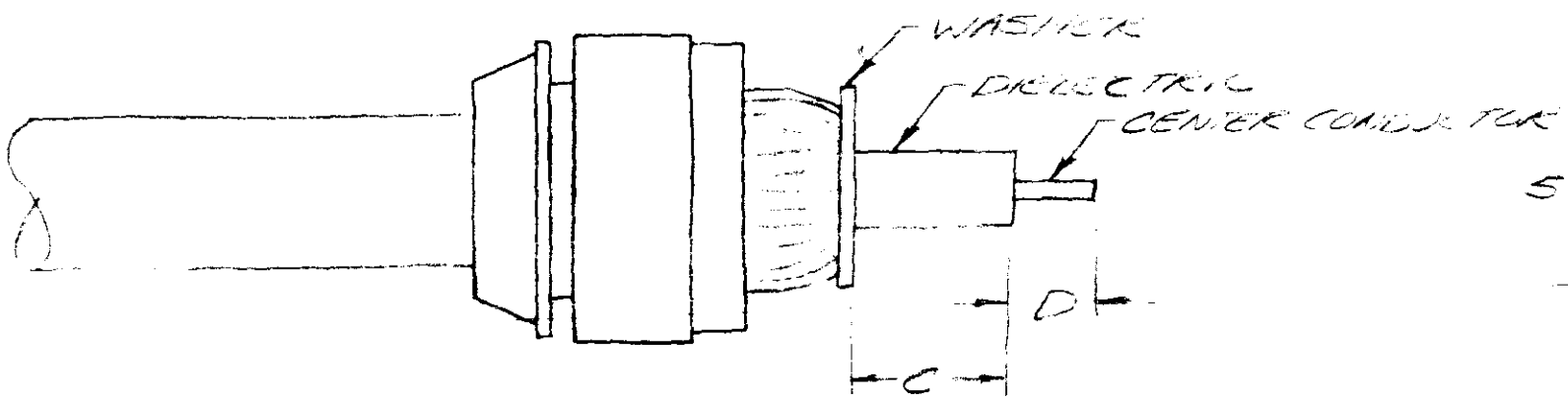
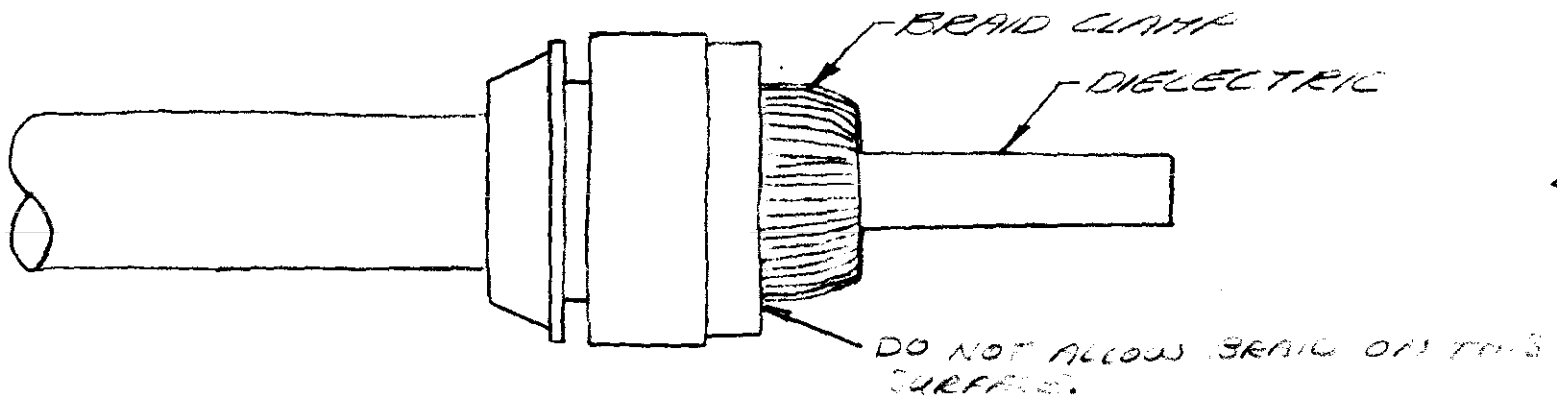
CODE	A	B	C	D
1301	<del>7</del> $\frac{11}{16}$	.096	.210	$\frac{3}{32}$
1302	$\frac{11}{16}$	.125	.214	.080
1303	$\frac{11}{16}$	.096	.166	$\frac{9}{64}$
1304	$\frac{11}{16}$	.096	.210	$\frac{3}{32}$
1305	.69	.096	.102	.094
1306	.69	.096	.243	.110

1995-1-9

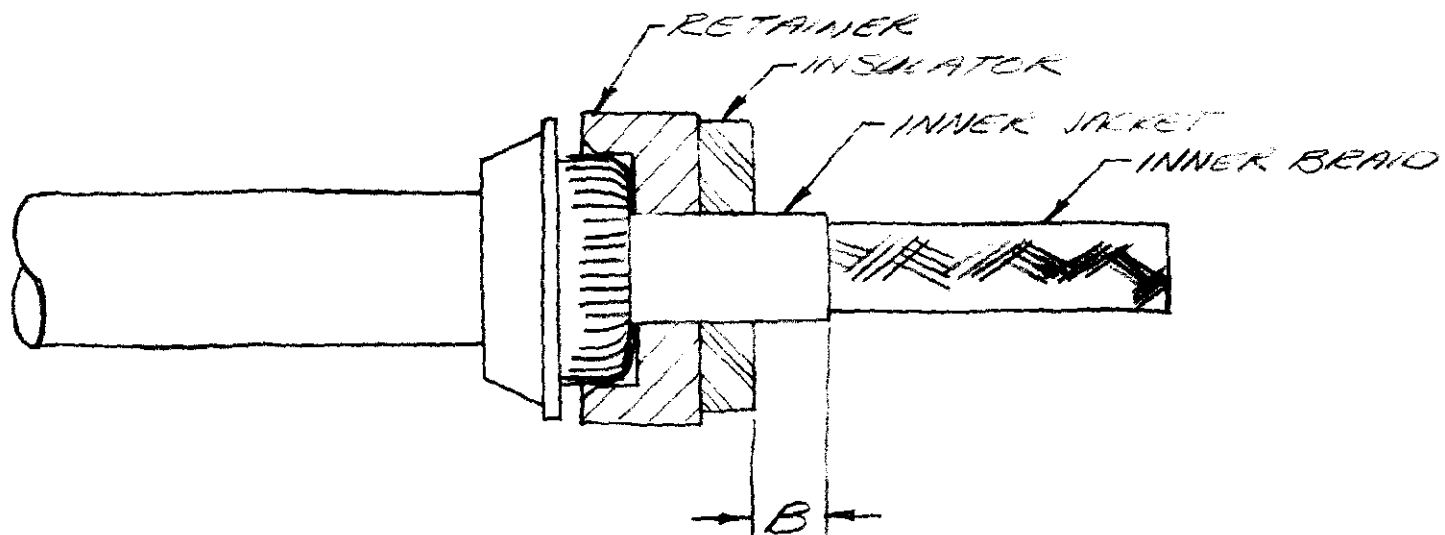
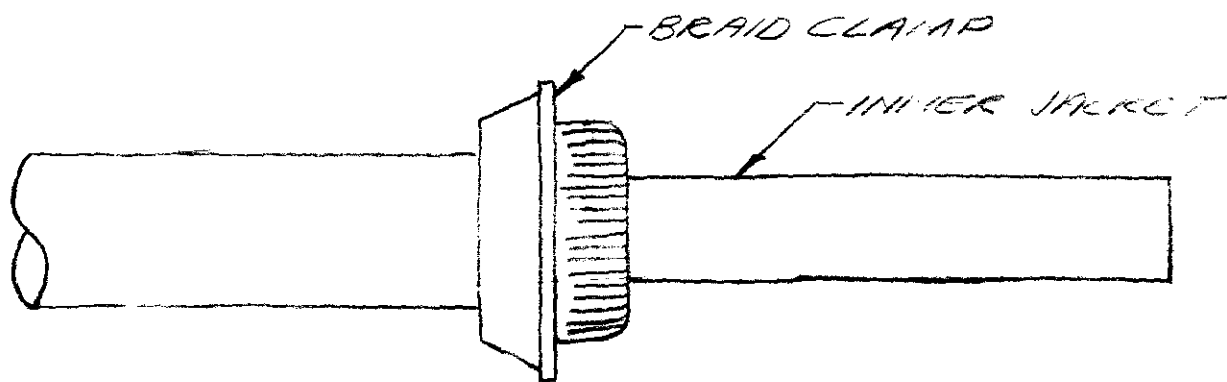
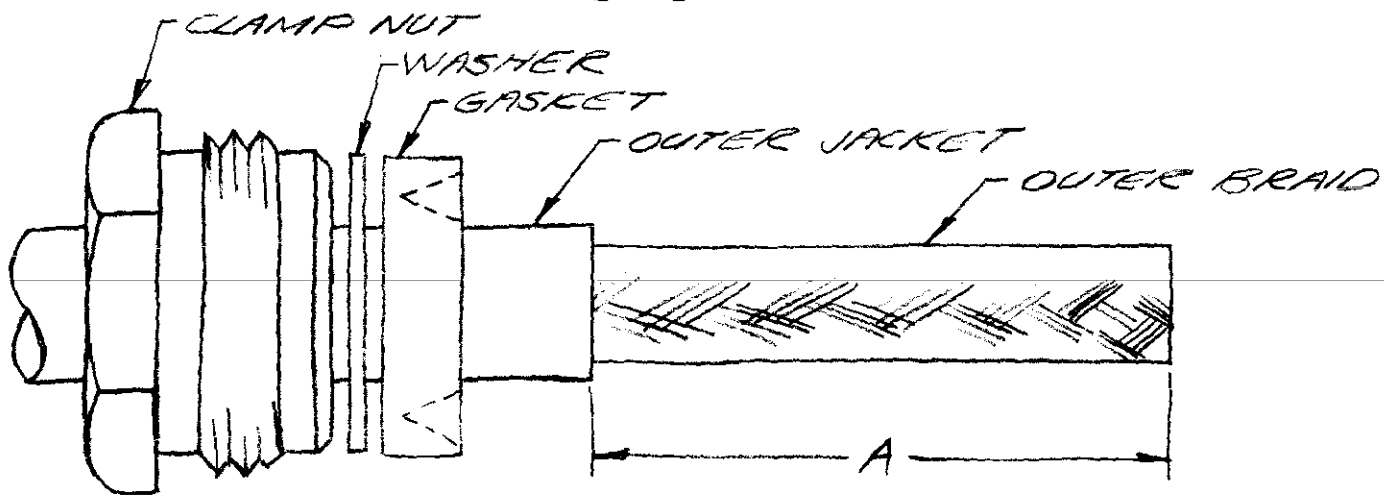
1995-3-9

# CABLING PROCEDURE 1300

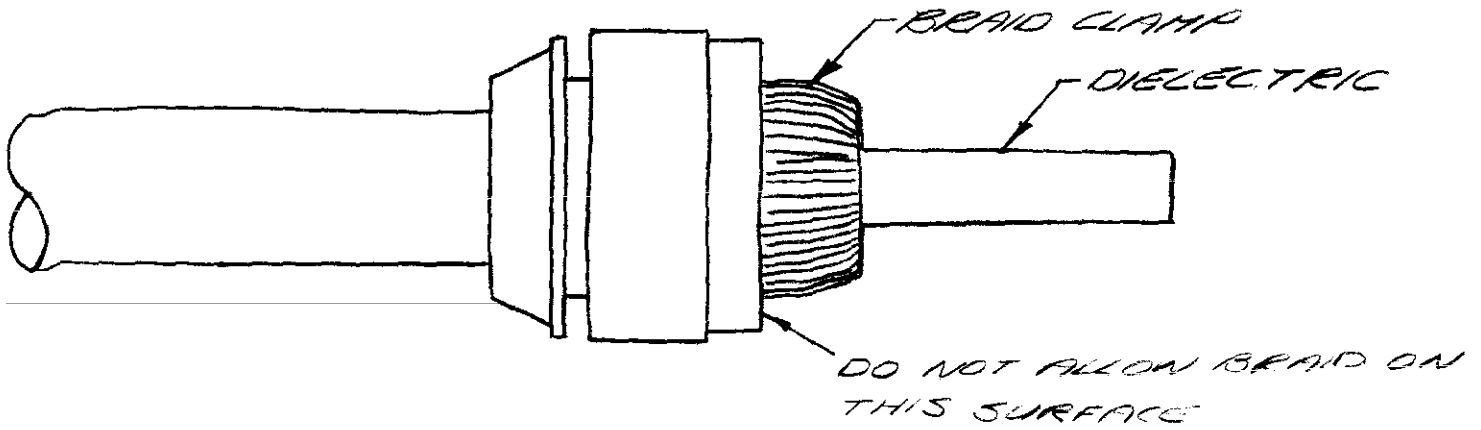




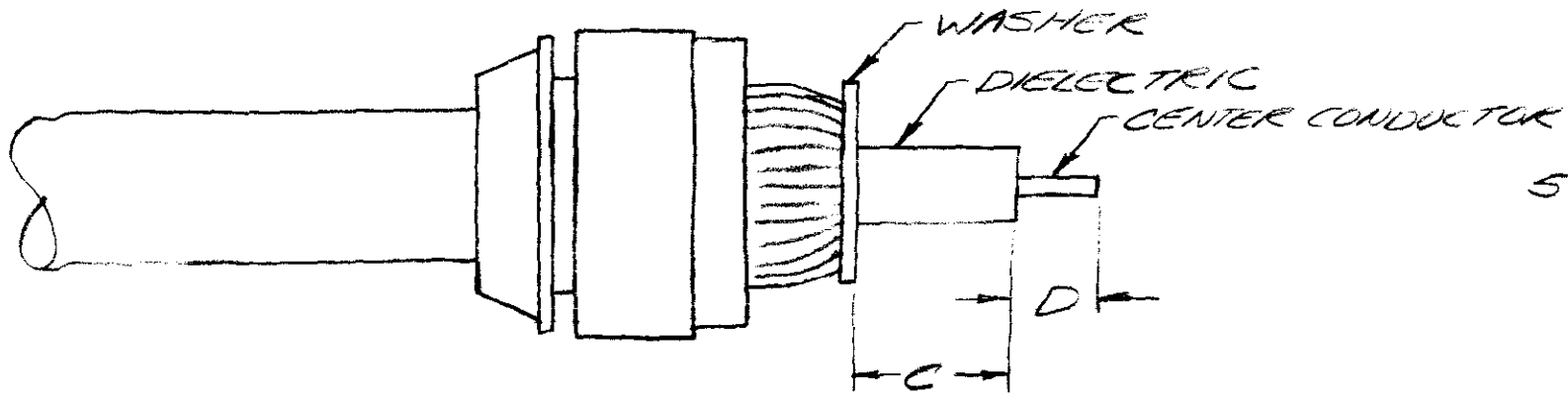
# CABLING PROCEDURE 1300



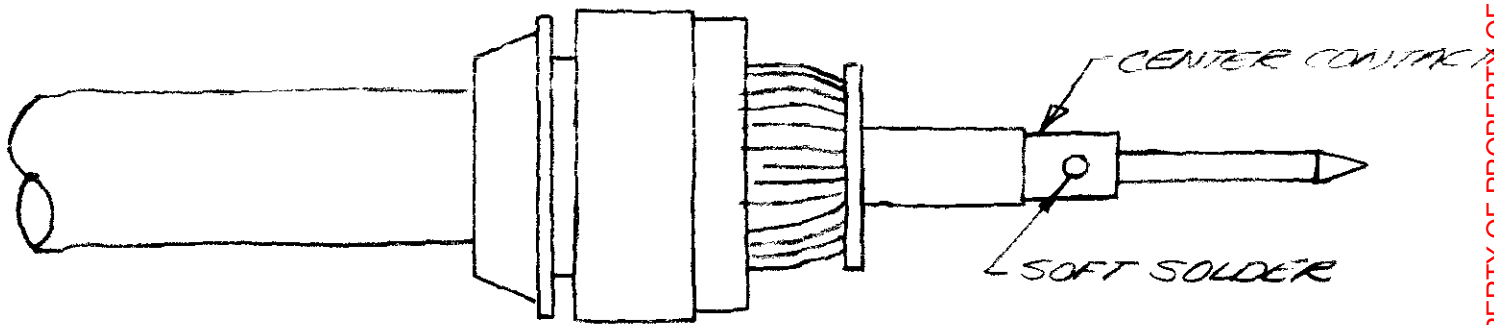
KINGS ELECTRONICS CO., Inc,  
40 MARBLEDALE ROAD  
TUCKAHOE 7, N. Y.



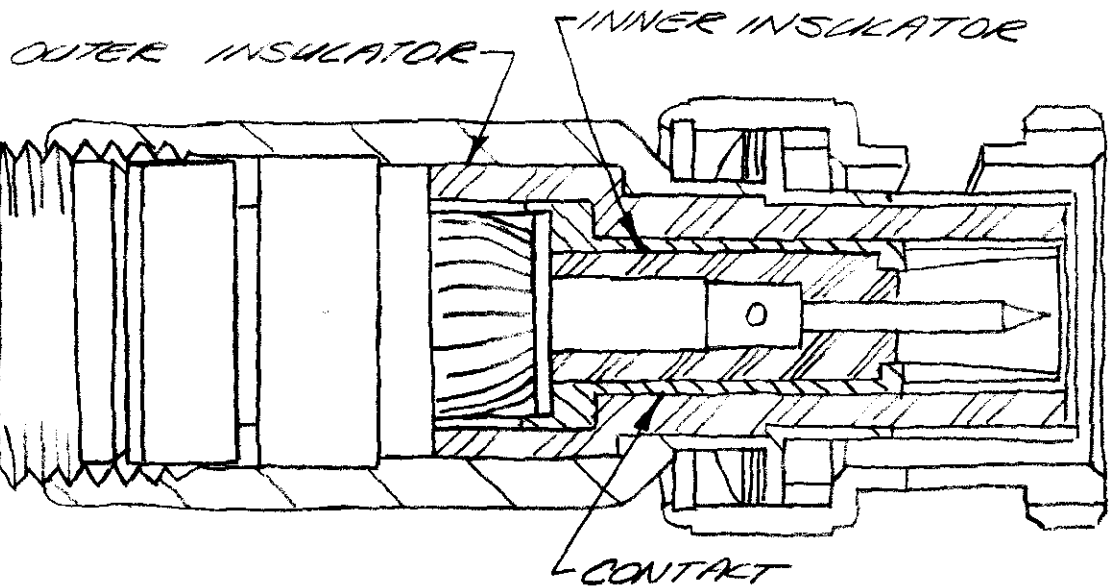
4



5



6

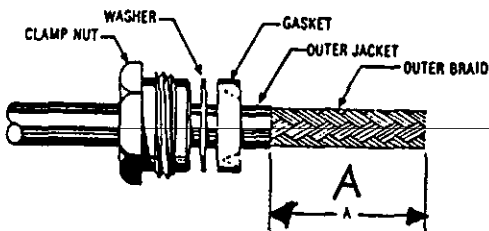


7

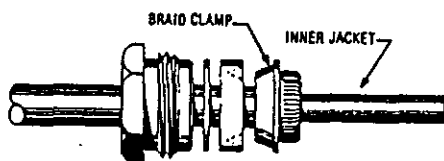


# CABLING PROCEDURE KINGS

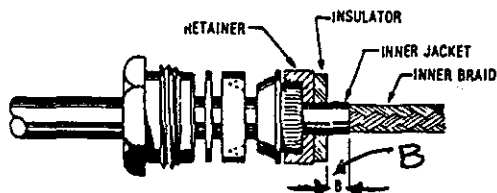
## CP-1300



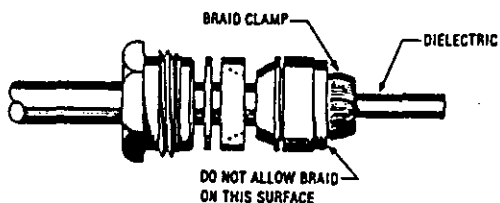
1. Cut cable end square. Slide clamp nut, washer and gasket over jacket. Remove outer jacket to dimension "A".



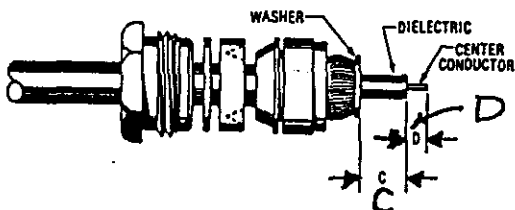
2. Place braid clamp over outer braid and against jacket cut. Comb out braid and fold back over braid clamp. Trim as shown.



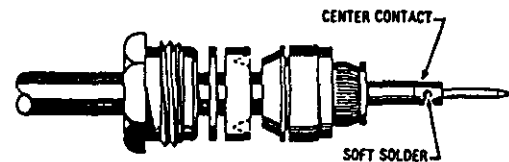
3. Assemble retainer and insulator over inner jacket. Remove inner jacket to dimension "B".



4. Place braid clamp over inner braid and against inner jacket cut. Comb out braid and fold back over braid clamp. Trim even with base of braid clamp.



5. Place washer over dielectric against braid. Trim dielectric to dimension "C" and center conductor to dimension "D".



6. Solder center contact to center conductor.



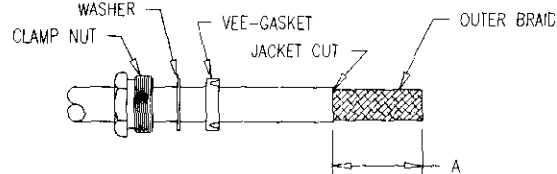
7. Assemble inner insulator, contact and outer insulator, then insert into body. Slide back end parts forward. Thread assembly into connector body and lock securely.

TRIM CODE CHART

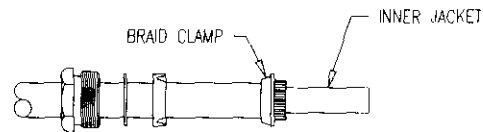
CODE	A	B	C	D
1301	.69	.096	.210	.094
1302	.69	.125	.214	.080
1303	.69	.096	.166	.141

DASH NO.	M CODE	MADE FROM
-1	M88	INDIVIDUAL CUT SHEETS

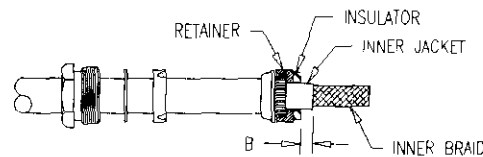
KINGS ELECTRONICS CO. INC., ROCK HILL, S.C.



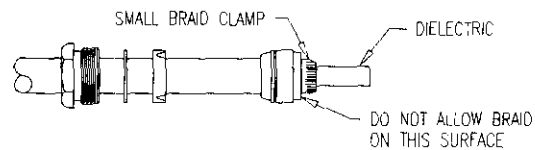
1. CUT CABLE END SQUARE, SLIDE CLAMP NUT, WASHER AND VEE-GASKET OVER JACKET. REMOVE OUTER JACKET TO DIMENSION "A".



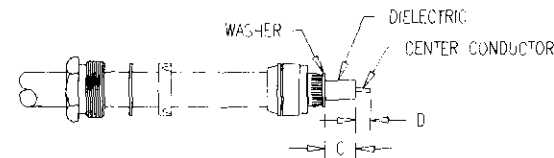
2. PLACE BRAID CLAMP OVER OUTER BRAID AND AGAINST JACKET CUT. COMB OUT BRAID AND FOLD BACK OVER BRAID CLAMP. TRIM AS SHOWN.



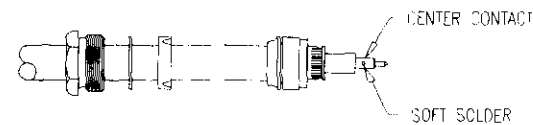
3. ASSEMBLE RETAINER AND INSULATOR OVER INNER JACKET. REMOVE INNER JACKET TO DIMENSION "B".



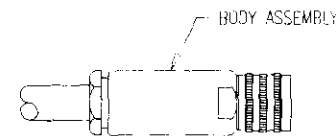
4. PLACE SMALL BRAID CLAMP OVER INNER BRAID AND AGAINST INNER JACKET CUT. COMB OUT BRAID AND FOLD BACK OVER SMALL CLAMP. TRIM EVEN WITH BASE OF BRAID CLAMP.



5. PLACE WASHER OVER DIELECTRIC AND AGAINST BRAID. TRIM DIELECTRIC TO DIMENSION "C" AND CENTER CONDUCTOR TO DIMENSION "D".



6. SOLDER CENTER CONTACT TO CENTER CONDUCTOR.



7. SLIDE BACK END PARTS FORWARD. ASSEMBLE INNER INSULATOR, INTERMEDIATE CONTACT AND OUTER INSULATOR. THREAD INTO CONNECTOR BODY AND TORQUE TO 30-35 IN.LBS

TRIM CODE CHART			
A	B	C	D
.69	.096	.102	.094

CP-1305

NOTES:

1. INSTRUCTION SHEET TO BE WHITE SULPHUR FREE PAPER.

REDUC TO 5 IN. X 3.5 IN.

CP-1305

REVISIONS

ISSUE	CHANGES
1	ER 38882 DCT 6/27/3

CP1305

SCALE 1:1

APPROX SURFACE AREA

USED ON 2755-7-5

REF:


CABLING INSTRUCTIONS

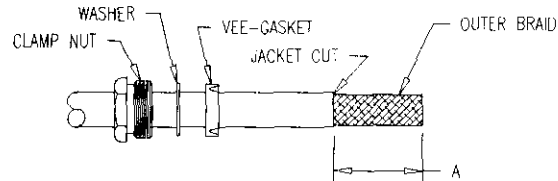
DRAWN HVN	DATE 05/02/03
DESIGN	DATE
APPR.	DATE

**KINGS**  
ELECTRONICS CO., INC.  
ROCK HILL, SOUTH CAROLINA 29730

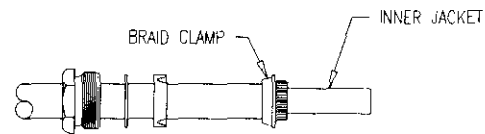
CP-1305

DASH NO.	M CODE	MADE FROM
-1	M88	INDIVIDUAL CUT SHEETS

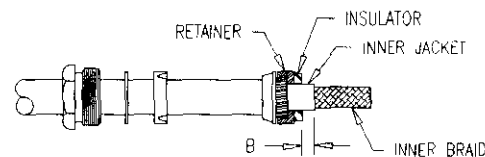
 KINGS ELECTRONICS CO. INC., ROCK HILL, S.C.



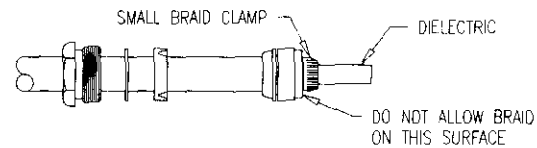
1. CUT CABLE END SQUARE. SLIDE CLAMP NUT, WASHER AND VEE-GASKET OVER JACKET. REMOVE OUTER JACKET TO DIMENSION "A".



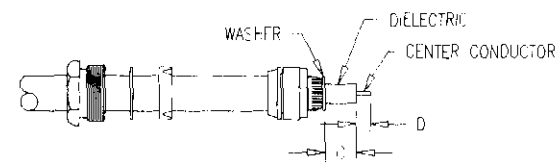
2. PLACE BRAID CLAMP OVER OUTER BRAID AND AGAINST JACKET CUT. COMB OUT BRAID AND FOLD BACK OVER BRAID CLAMP. TRIM AS SHOWN.



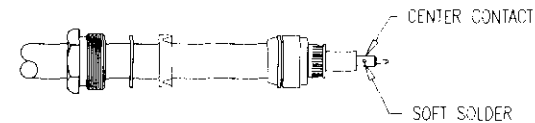
3. ASSEMBLE RETAINER AND INSULATOR OVER INNER JACKET. REMOVE INNER JACKET TO DIMENSION "B".



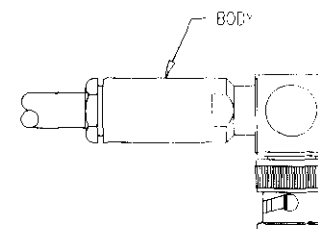
4. PLACE SMALL BRAID CLAMP OVER INNER BRAID AND AGAINST INNER JACKET CUT. COMB OUT BRAID AND FOLD BACK OVER SMALL CLAMP. TRIM EVEN WITH BASE OF BRAID CLAMP.



5. PLACE WASHER OVER DIELECTRIC AND AGAINST BRAID. TRIM DIELECTRIC TO DIMENSION "C" AND CENTER CONDUCTOR TO DIMENSION "D".



6. SOLDER CENTER CONTACT TO CENTER CONDUCTOR.



7. SLIDE BACK END PARTS FORWARD THROUGH ASSEMBLY INTO CONNECTOR BODY AND TORQUE TO 35 IN LBS.

TRIM CODE CHART			
A	B	C	D
.69	.096	.243	.110

CP-1306

NOTES:

1. INSTRUCTION SHEET TO BE WHITE SULPHUR FREE PAPER.

REDUCE TO 5 IN. X 3.5 IN.

CP-1306

REVISIONS

ISSUE	CHANGES
1	ER 38882 DCT 6/27/3

CP1306

SCALE 1:1

APPROX SURFACE AREA

USED ON 1966-5-5

REF:

CABLING INSTRUCTIONS

DRAWN	HVN	DATE	05/02/03
DESIGN	CT	DATE	02/17/94
APPR.		DATE	

  
ELECTRONICS CO., INC.  
ROCK HILL, SOUTH CAROLINA 29730

CP-1306

# BLING PROCEDURE

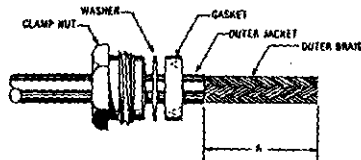
TER

KINGS

TRIM CODE CHART

CODE	A		B		C		D	
	IN.	MM	IN.	MM	IN.	MM	IN.	MM
1301	.69	17.53	.096	2.43	.210	5.33	.094	2.39
1302	.69	17.53	.125	3.18	.214	5.43	.080	2.03
1303	.69	17.53	.096	2.43	.166	4.22	.141	3.58
1305	.69	17.53	.096	2.43	.102	2.59	.094	2.39
1306	.69	17.53	.096	2.43	.243	6.17	.110	2.82

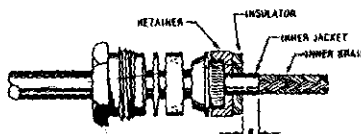
## CP-1300



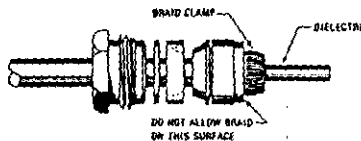
1. Cut cable end square. Slide clamp nut, washer and gasket over jacket. Remove outer jacket to dimension "A".



2. Place braid clamp over outer braid and against jacket cut. Comb out braid and fold back over braid clamp. Trim as shown.



3. Assemble retainer and insulator over inner jacket. Remove inner jacket to dimension "B".

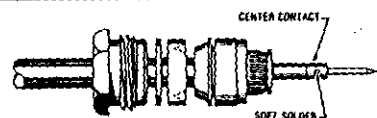


4. Place braid clamp over inner braid and against inner jacket cut. Comb out braid and fold back over braid clamp. Trim even with base of braid clamp.

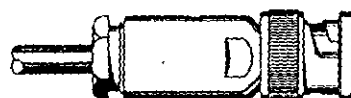


5. Place washer\* over dielectric against braid, trim dielectric to dimension "C" and center conductor to dimension "D".

\* Washer not used in angle connectors. "C" dimension from braid clamp.



6. Solder center contact to center conductor.



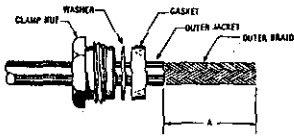
7. Assemble inner insulator\*, contact\* and insulator\*, then insert into body, slide back and parts forward. Thread assembly into connector body and lock securely.

\* Straight connectors only.


# CABLING PROCEDURE

**KINGS**


## CP-1300



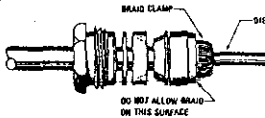
1. Cut cable and square. Slide clamp nut, washer and gasket over jacket. Remove outer jacket to dimension "A".




2. Place braid clamp over outer braid and against jacket cut. Comb out braid and fold back over braid clamp. Trim as shown.



3. Assemble retainer and insulator over inner jacket. Remove inner jacket to dimension "B".




4. Place braid clamp over inner braid and against inner jacket cut. Comb out braid and fold back over braid clamp. Trim even with base of braid clamp.




5. Place washer\* over dielectric against braid, trim dielectric to dimension "C" and center conductor to dimension "D".

\* Washer not used in angle connectors. "C" dimension from braid clamp.



6. Solder center contact to center conductor.



7. Assemble inner insulator\*, contact\* and insulator\*, then insert into body, slide back end parts forward. Thread assembly into connector body and lock securely.

\* Straight connectors only.

TRIM CODE CHART

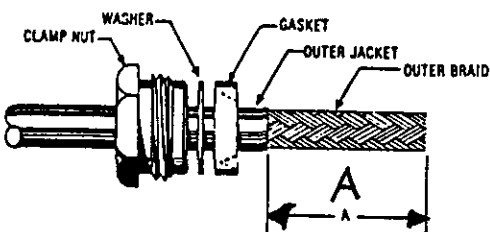
CODE	A		B		C		D	
	IN.	MM	IN.	MM	IN.	MM	IN.	MM
1301	.69	17.53	.096	2.43	.210	5.33	.094	2.39
1302	.69	17.53	.125	3.18	.214	5.43	.080	2.03
1303	.69	17.53	.096	2.43	.166	4.22	.141	3.58
1305	.69	17.53	.096	2.43	.102	2.59	.094	2.39
1306	.69	17.53	.096	2.43	.243	6.17	.110	2.82

E-17653

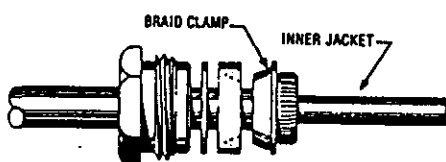
E-17682

# CABLING PROCEDURE KINGS

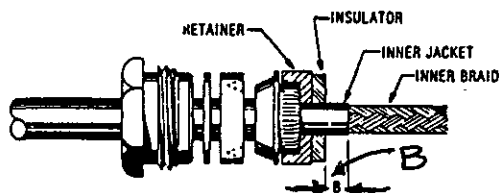
## CP-1300



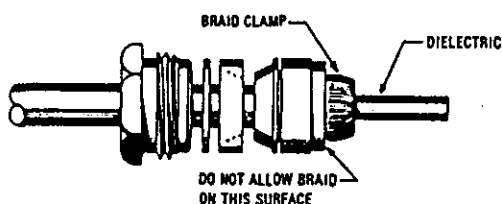
1. Cut cable end square. Slide clamp nut, washer and gasket over jacket. Remove outer jacket to dimension "A".



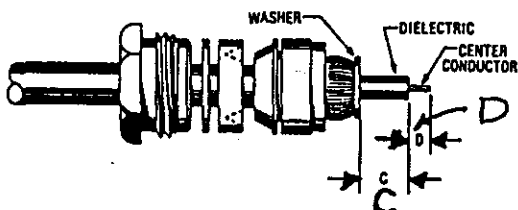
2. Place braid clamp over outer braid and against jacket cut. Comb out braid and fold back over braid clamp. Trim as shown.



3. Assemble retainer and insulator over inner jacket. Remove inner jacket to dimension "B".



4. Place braid clamp over inner braid and against inner jacket cut. Comb out braid and fold back over braid clamp. Trim even with base of braid clamp.



5. Place washer over dielectric against braid. Trim dielectric to dimension "C" and center conductor to dimension "D".



6. Solder center contact to center conductor.



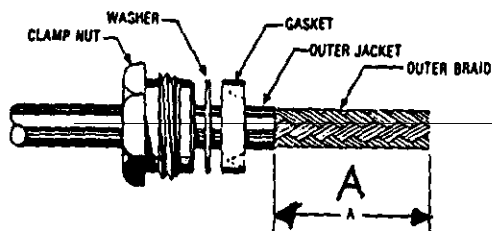
7. Assemble inner insulator, contact and outer insulator, then insert into body. Slide back end parts forward. Thread assembly into connector body and lock securely.

TRIM CODE CHART

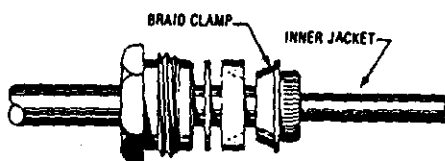
CODE	A	B	C	D
1301	.69	.096	.210	.094
1302	.69	.125	.214	.080
1303	.69	.096	.166	.141

# CABLING PROCEDURE KING

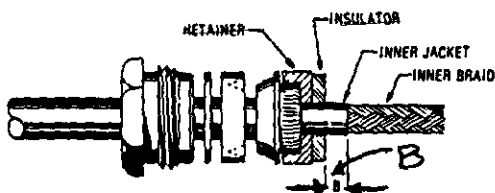
## CP-1300



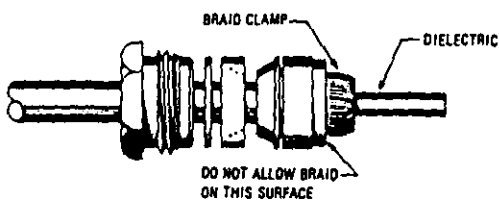
1. Cut cable end square. Slide clamp nut, washer and gasket over jacket. Remove outer jacket to dimension "A".



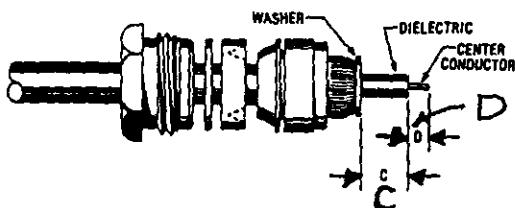
2. Place braid clamp over outer braid and against jacket cut. Comb out braid and fold back over braid clamp. Trim as shown.



3. Assemble retainer and insulator over inner jacket. Remove inner jacket to dimension "B".



4. Place braid clamp over inner braid and against inner jacket cut. Comb out braid and fold back over braid clamp. Trim even with base of braid clamp.



5. Place washer over dielectric against braid. Trim dielectric to dimension "C" and center conductor to dimension "D".



6. Solder center contact to center conductor.



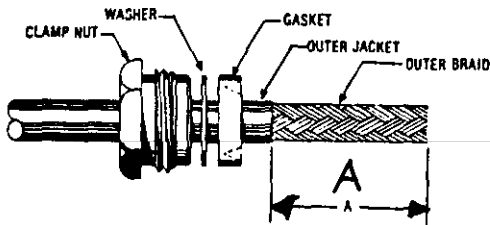
7. Assemble inner insulator, contact and outer insulator, then insert into body. Slide back end parts forward. Thread assembly into connector body and lock securely.

TRIM CODE CHART

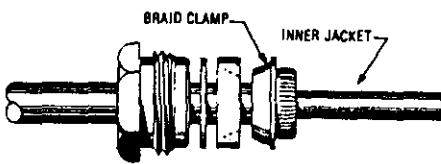
CODE	A	B	C	D
1301	.69	.096	.210	.094
1302	.69	.125	.214	.080
1303	.69	.096	.166	.141

# CABLING PROCEDURE KINGS

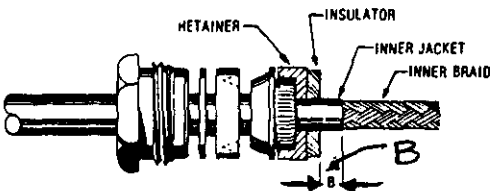
## CP-1300



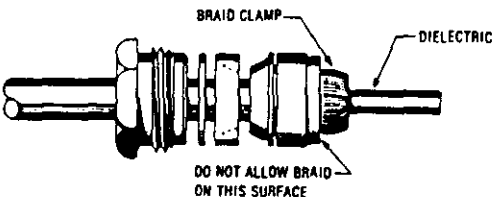
1. Cut cable end square. Slide clamp nut, washer and gasket over jacket. Remove outer jacket to dimension "A".



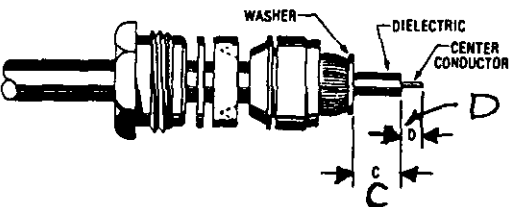
2. Place braid clamp over outer braid and against jacket cut. Comb out braid and fold back over braid clamp. Trim as shown.



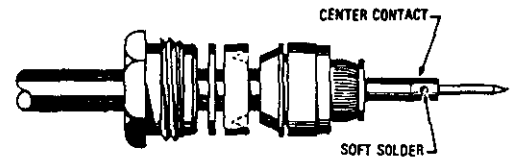
3. Assemble retainer and insulator over inner jacket. Remove inner jacket to dimension "B".



4. Place braid clamp over inner braid and against inner jacket cut. Comb out braid and fold back over braid clamp. Trim even with base of braid clamp.



5. Place washer over dielectric against braid. Trim dielectric to dimension "C" and center conductor to dimension "D".



6. Solder center contact to center conductor.



7. Assemble inner insulator, contact and outer insulator, then insert into body. Slide back end parts forward. Thread assembly into connector body and lock securely.

TRIM CODE CHART

CODE	A	B	C	D
1301	.69	.096	.210	.096
1302	.69	.125	.214	.080
1303	.69	.096	.166	.141

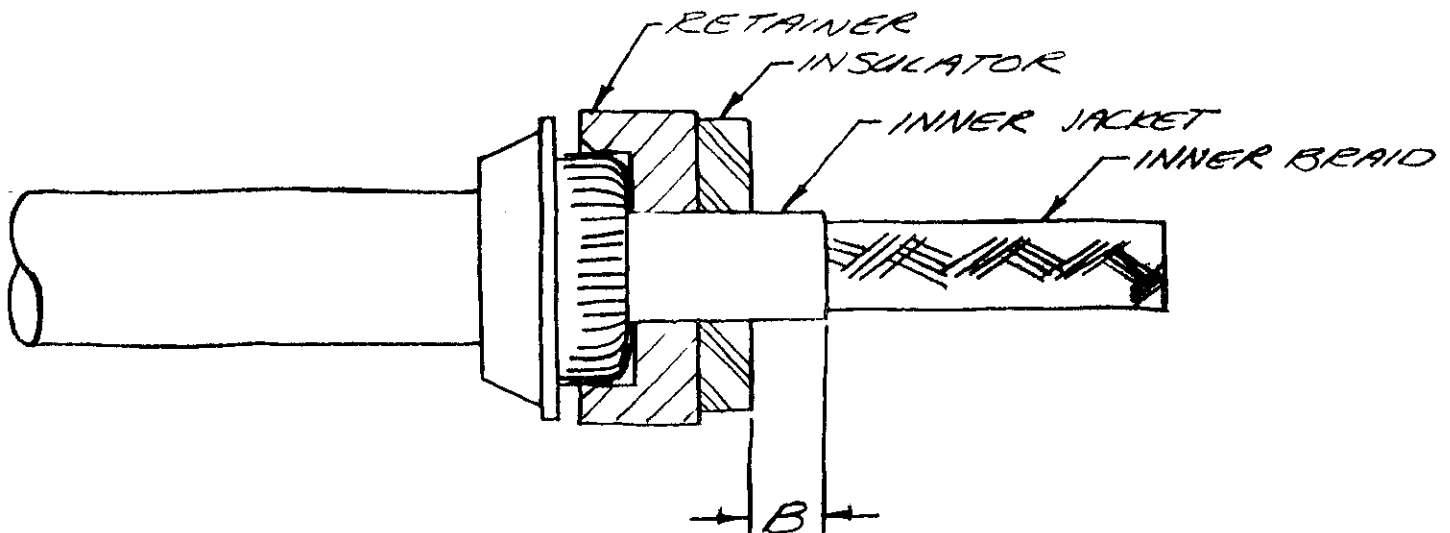
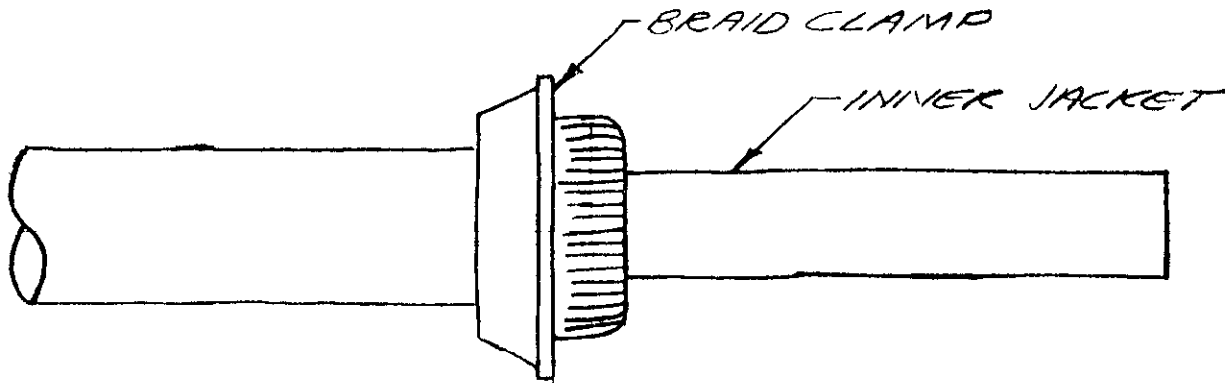
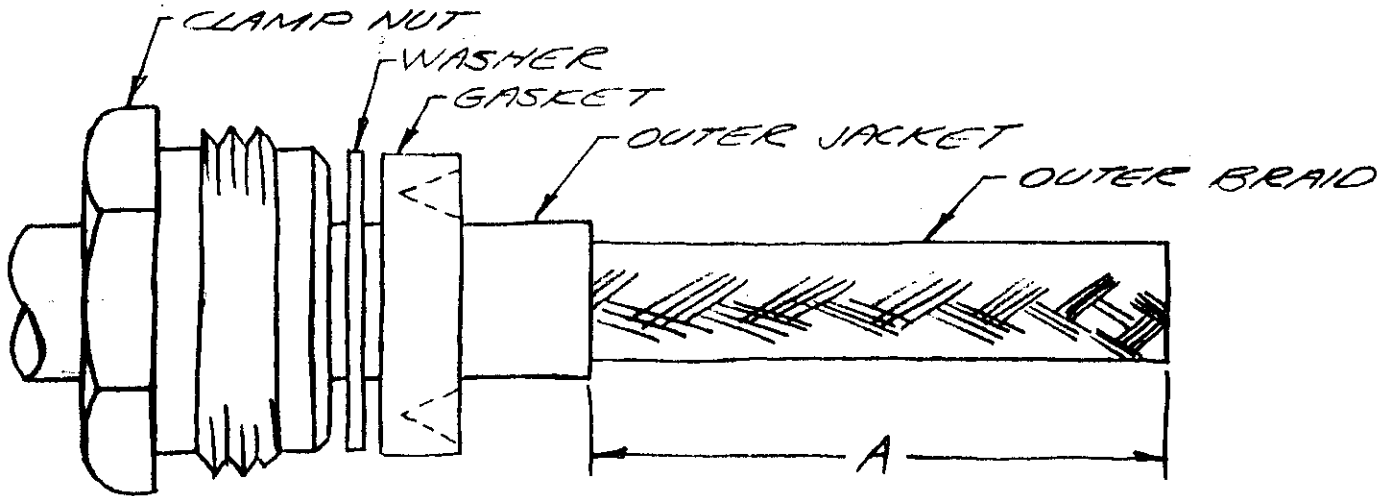


CABLING PROCEDURE 1300

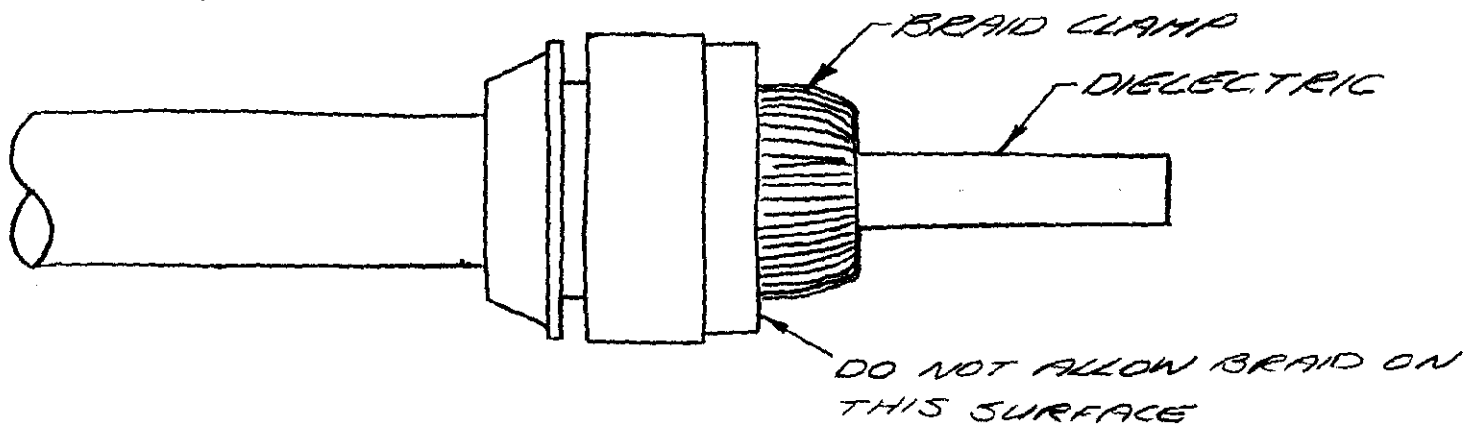
1. CUT CABLE END SQUARE, PLACE CLAMP NUT, WASHER AND GASKET OVER JACKET. REMOVE OUTER JACKET TO DIMENSION "A".
2. PLACE BRAID CLAMP OVER OUTER BRAID AGAINST JACKET CUT. COMB OUT BRAID AND FOLD BACK OVER BRAID CLAMP, TRIM IN USUAL MANNER.
3. ASSEMBLE RETAINER AND INSULATOR OVER INNER JACKET. REMOVE INNER JACKET TO DIMENSION "B".
4. PLACE BRAID CLAMP OVER INNER BRAID AGAINST INNER JACKET CUT. COMB OUT BRAID AND FOLD BACK OVER BRAID CLAMP, TRIM EVEN WITH BASE OF BRAID CLAMP.
5. PLACE WASHER OVER DIELECTRIC AGAINST BRAID AND TRIM DIELECTRIC TO DIMENSION "C" AND CENTER CONDUCTOR TO DIMENSION "D".
6. SOLDER CENTER CONTACT TO CENTER CONDUCTOR.
7. ASSEMBLE INNER INSULATOR, CONTACT AND OUTER INSULATOR, THEN INSERT INTO BODY. SLIDE BACK END PARTS FORWARD, THREAD ASSEMBLY INTO CONNECTOR BODY AND LOCK SECURELY.

CODE	A	B	C	D
1301	11/16	.096	.210	3/32

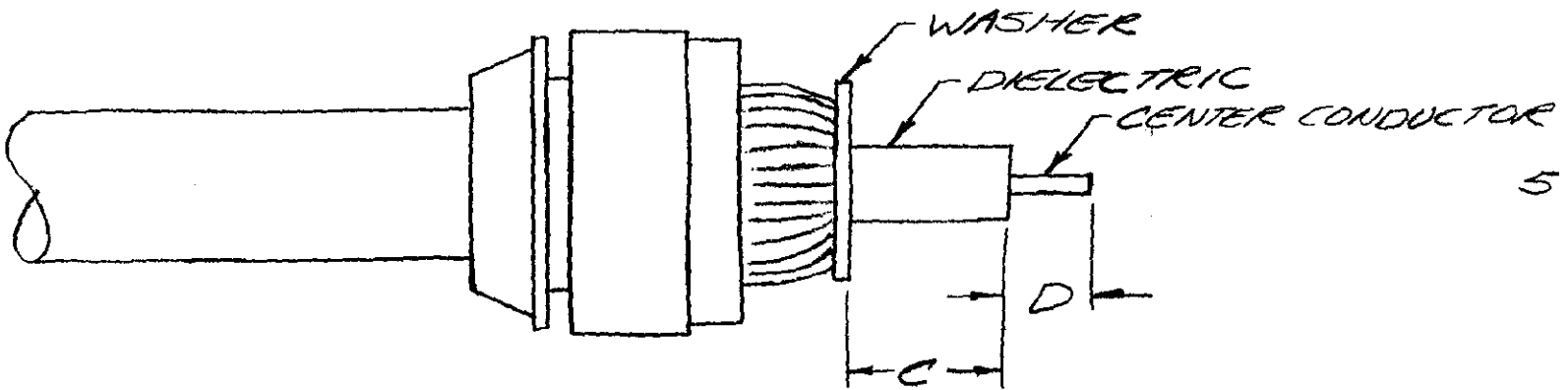
# CABLING PROCEDURE 1301



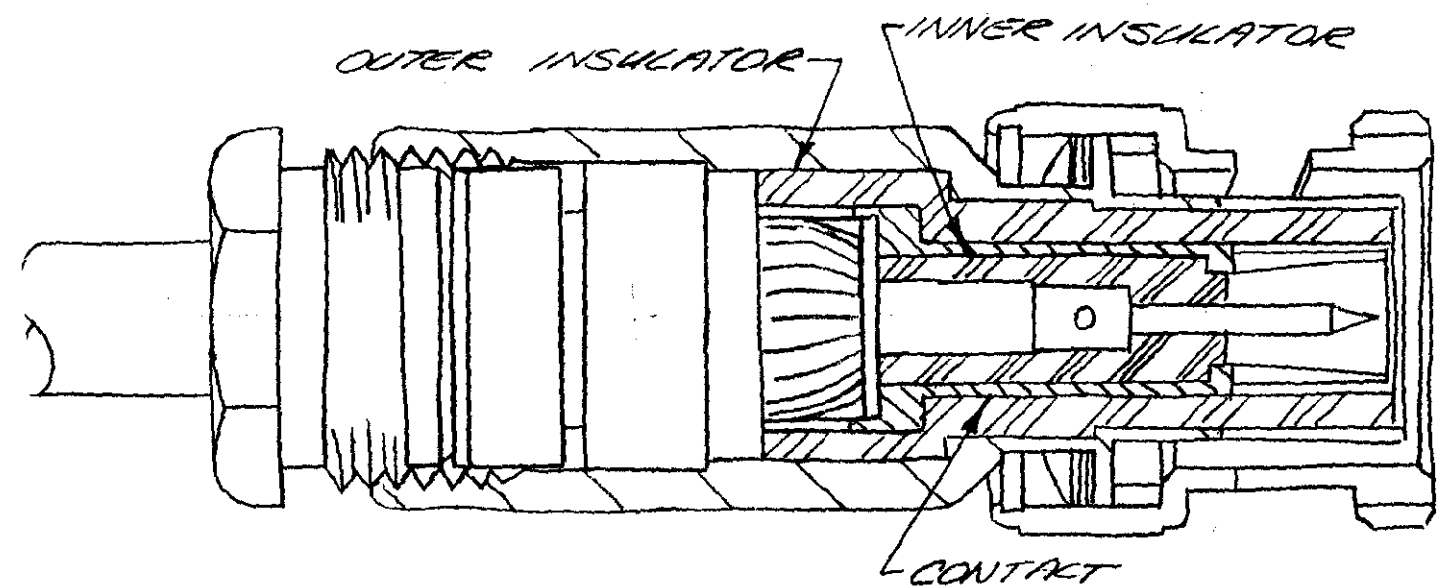
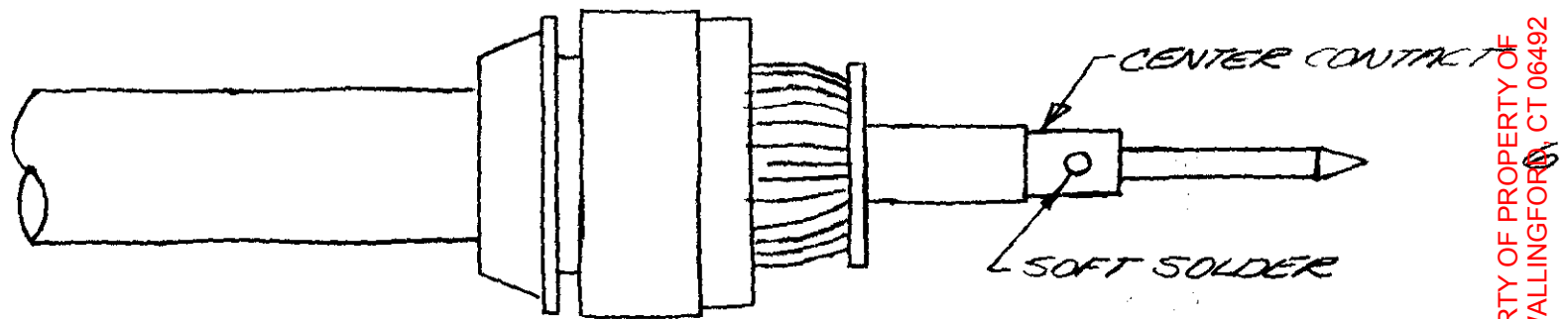
KINGS ELECTRONICS CO., Inc.  
40 MARBLEDAL ROAD  
TUCKAHOE 7, N. Y.



4



5

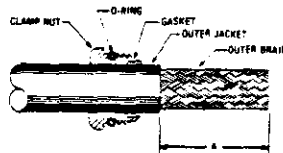


# CABLING PROCEDURE

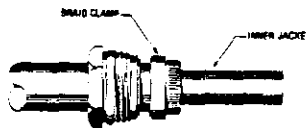
**KINGS**

CP-1300A

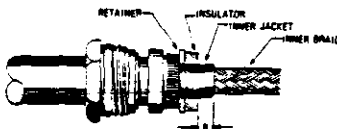
## CP-1300A



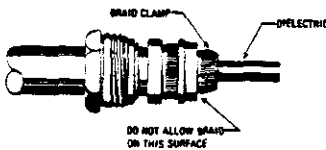
1. Cut cable end square. Assemble O-ring. Slide clamp nut and gasket over jacket. Remove outer jacket to dimension "A".



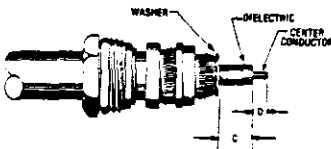
2. Place braid clamp over outer braid and against jacket cut. Comb out braid and fold back over braid clamp. Trim as shown.



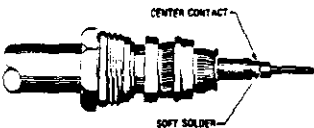
3. Assemble retainer and insulator over inner jacket. Remove inner jacket to dimension "B".



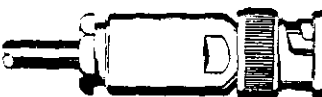
4. Place braid clamp over inner braid and against inner jacket cut. Comb out braid and fold back over braid clamp. Trim even with base of braid clamp.



5. Place washer over dielectric against braid. Trim dielectric to dimension "C" and center conductor to dimension "D".



6. Solder center contact to center conductor.



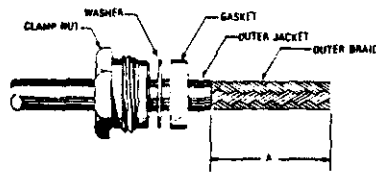
7. Assemble inner insulator, contact and outer insulator, then insert into body. Slide back end parts forward. Thread assembly into connector body and lock securely.

### TRIM CODE CHART

CODE	A	B	C	D
1301A	11/16	.096	.210	3/32

# CABLING PROCEDURES

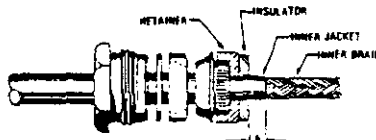
## CP-1300



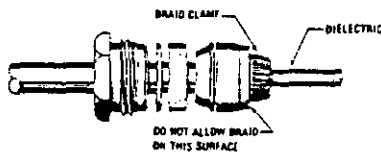
1. Cut cable end square. Slide clamp nut, washer and gasket over jacket. Remove outer jacket to dimension "A".



2. Place braid clamp over outer braid and against jacket cut. Comb out braid and fold back over braid clamp. Trim as shown.



3. Assemble retainer and insulator over inner jacket. Remove inner jacket to dimension "B".



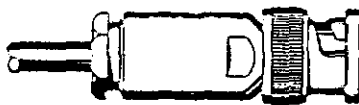
4. Place braid clamp over inner braid and against inner jacket cut. Comb out braid and fold back over braid clamp. Trim even with base of braid clamp.



5. Place washer over dielectric against braid. Trim dielectric to dimension "C" and center conductor to dimension "D".



6. Solder center contact to center conductor.



7. Assemble inner insulator, contact and outer insulator, then insert into body. Slide back end parts forward. Thread assembly into connector body and lock securely.

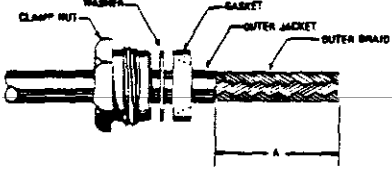
TRIM CODE CHART

CODE	A		B		C		D	
	IN.	MM.	IN.	MM.	IN.	MM.	IN.	MM.
1302	.69	17.53	.125	3.18	.214	5.43	.080	2.03


# CABLING PROCEDURES

MASTED

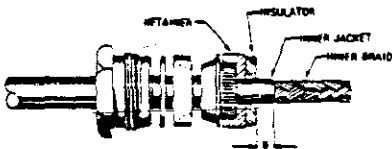
## CP-1300




1. Cut cable end square. Slide clamp nut, washer and gasket over jacket. Remove outer jacket to dimension "A".




2. Place braid clamp over outer braid and against jacket cut. Comb out braid and fold back over braid clamp. Trim as shown.




3. Assemble retainer and insulator over inner jacket. Remove inner jacket to dimension "B".



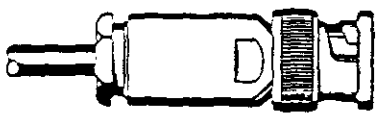
4. Place braid clamp over inner braid and against inner jacket cut. Comb out braid and fold back over braid clamp. Trim even with base of braid clamp.



5. Place washer over dielectric against braid. Trim dielectric to dimension "C" and center conductor to dimension "D".



6. Solder center contact to center conductor.



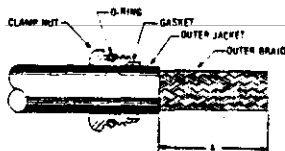
7. Assemble inner insulator, contact and outer insulator, then insert into body. Slide back end parts forward. Thread assembly into connector body and lock securely.

### TRIM CODE CHART

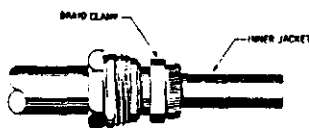
CODE	A		B		C		D	
	IN	MM	IN	MM	IN	MM	IN	MM
1304								
SAME AS 1301								

CP-1300A

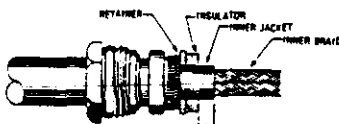
## CP-1300A



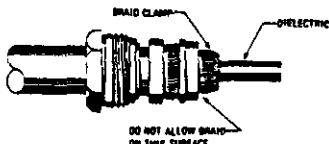
1. Cut cable end square. Assemble O-ring. Slide clamp nut and gasket over jacket. Remove outer jacket to dimension "A".



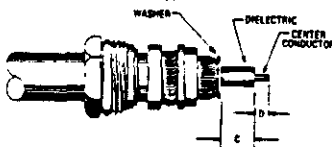
2. Place braid clamp over outer braid and against jacket cut. Comb out braid and fold back over braid clamp. Trim as shown.



3. Assemble retainer and insulator over inner jacket. Remove inner jacket to dimension "B".



4. Place braid clamp over inner braid and against inner jacket cut. Comb out braid and fold back over braid clamp. Trim even with base of braid clamp.



5. Place washer over dielectric against braid. Trim dielectric to dimension "C" and center conductor to dimension "D".



6. Solder center contact to center conductor.



7. Assemble inner insulator, contact and outer insulator, then insert into body. Slide back end parts forward. Thread assembly into connector body and lock securely.

### TRIM CODE CHART

CODE	A	B	C	D
1303	11/16	.096	—	.318

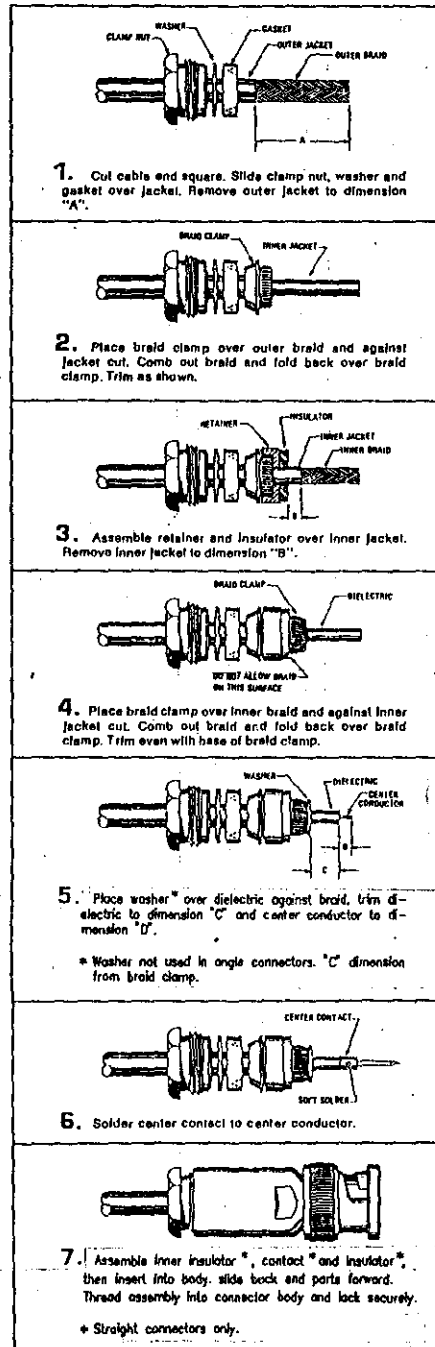
# CABLING PROCEDURE

KINGS

CP-1300

CP-1307

MASTER



TRIM CODE CHART

CODE	A		B		C		D	
	IN.	MM	IN.	MM	IN.	MM	IN.	MM
-	.69		.096		.108		.194	

MASTER

MASTER



CABLING PROCEDURE 1300 A

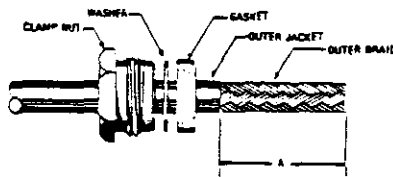
1. CUT CABLE END SQUARE, ASSEMBLE O-RING. PLACE CLAMP NUT AND GASKET OVER JACKET. REMOVE OUTER JACKET TO DIMENSION "A".
2. PLACE BRAID CLAMP OVER OUTER BRAID AGAINST JACKET CUT. COMB OUT BRAID AND FOLD BACK OVER BRAID CLAMP, TRIM IN USUAL MANNER.
3. ASSEMBLE RETAINER AND INSULATOR OVER INNER JACKET. REMOVE INNER JACKET TO DIMENSION "B".
4. PLACE BRAID CLAMP OVER INNER BRAID AGAINST INNER JACKET CUT. COMB OUT BRAID AND FOLD BACK OVER BRAID CLAMP, TRIM EVEN WITH BASE OF BRAID CLAMP.
5. PLACE WASHER OVER DIELECTRIC AGAINST BRAID AND TRIM DIELECTRIC TO DIMENSION "C" AND CENTER CONDUCTOR TO DIMENSION "D".
6. SOLDER CENTER CONTACT TO CENTER CONDUCTOR.
7. ASSEMBLE INNER INSULATOR, CONTACT AND OUTER INSULATOR, THEN INSERT INTO BODY. SLIDE BACK END PARTS FORWARD, THREAD ASSEMBLY INTO CONNECTOR BODY AND LOCK SECURELY.

CODE	A	B	C	D
1301A	11/16	.096	.210	3/32

# CABLING PROCEDURES

MASTER

CP-1300



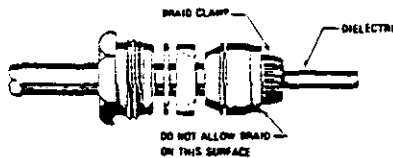
1. Cut cable end square. Slide clamp nut, washer and gasket over jacket. Remove outer jacket to dimension "A".



2. Place braid clamp over outer braid and against jacket cut. Comb out braid and fold back over braid clamp. Trim as shown.



3. Assemble retainer and insulator over inner jacket. Remove inner jacket to dimension "B".



4. Place braid clamp over inner braid and against inner jacket cut. Comb out braid and fold back over braid clamp. Trim even with base of braid clamp.



5. Place washer over dielectric against braid. Trim dielectric to dimension "C" and center conductor to dimension "D".



6. Solder center contact to center conductor.

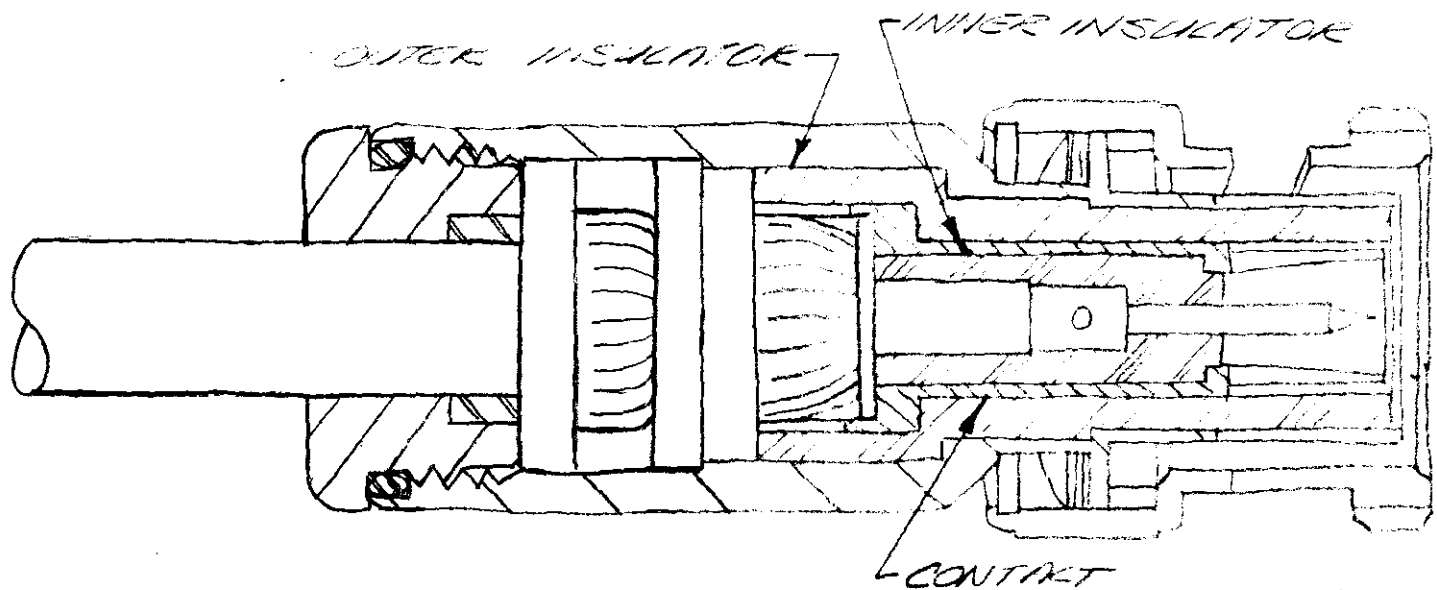
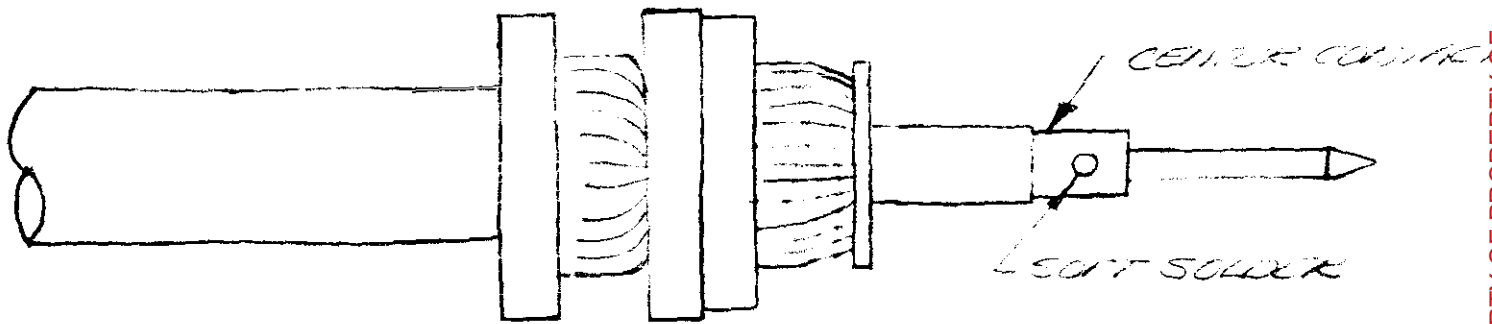
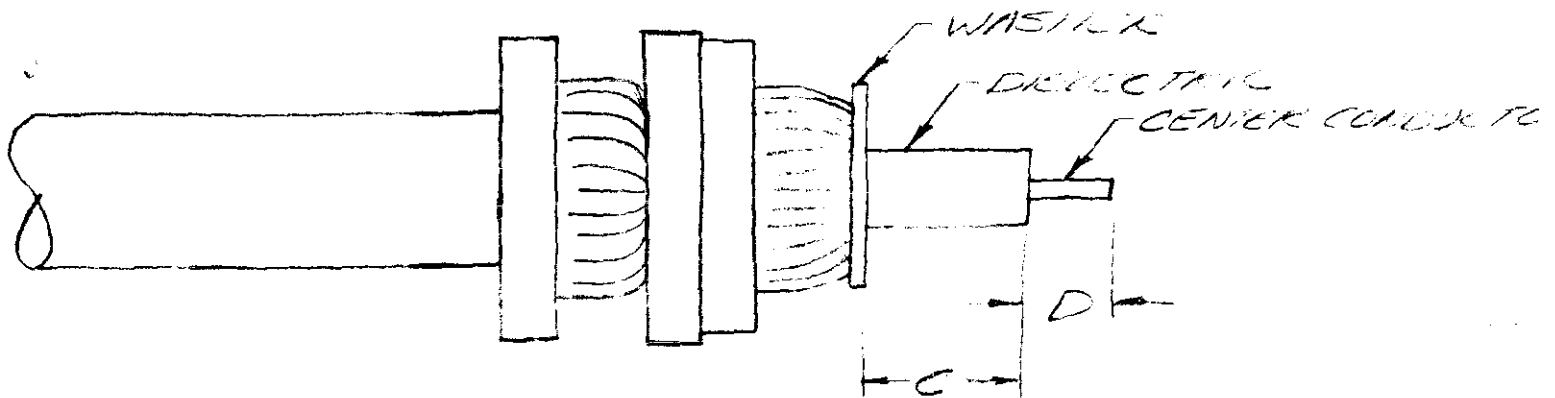
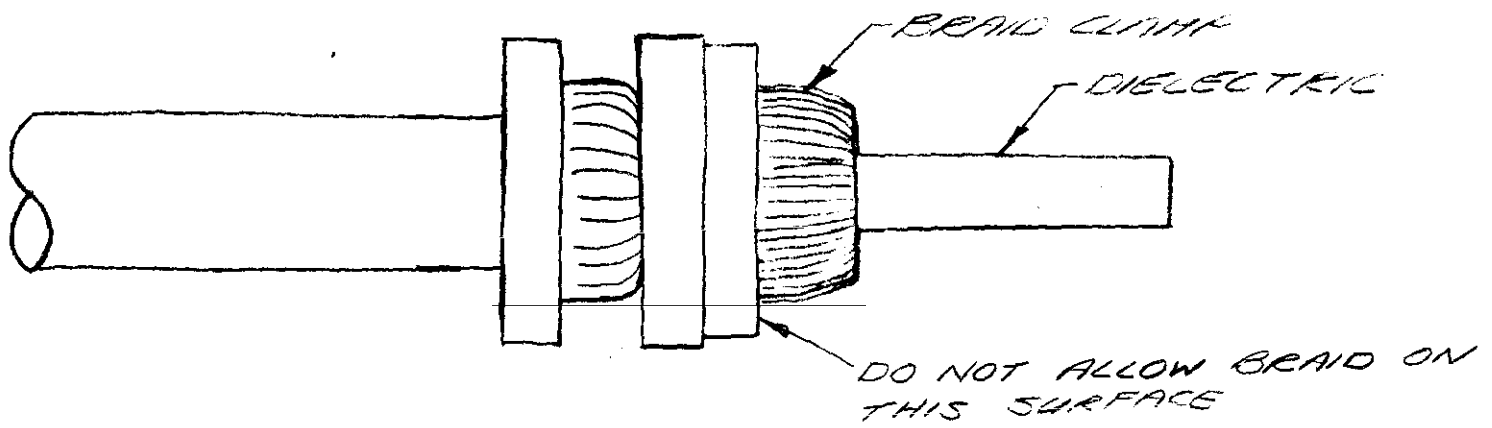


7. Assemble inner insulator, contact and outer insulator, then insert into body. Slide back end parts forward. Thread assembly into connector body and lock securely.

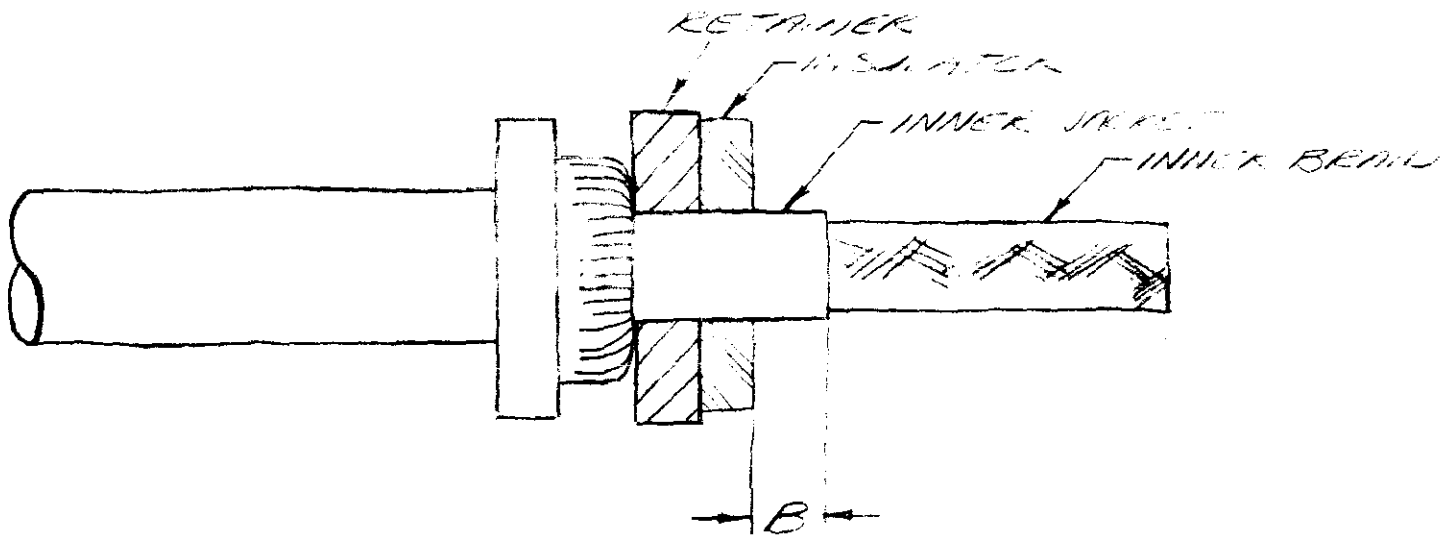
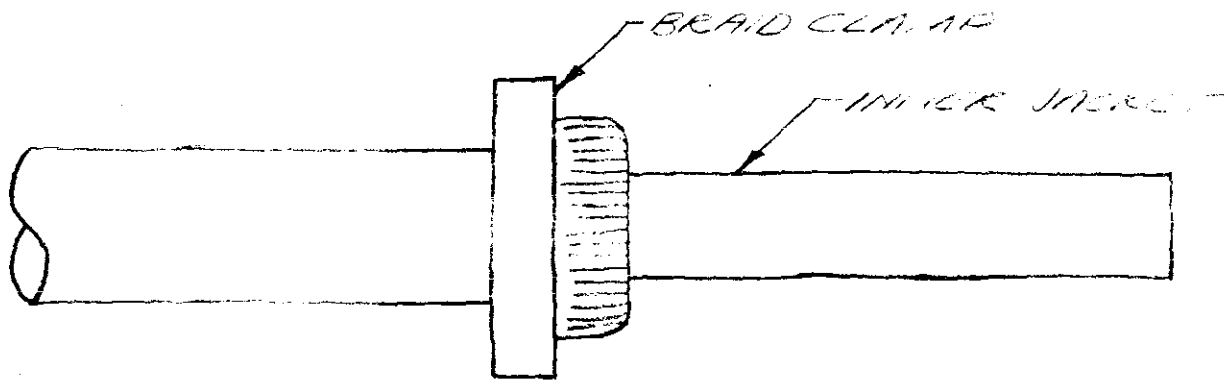
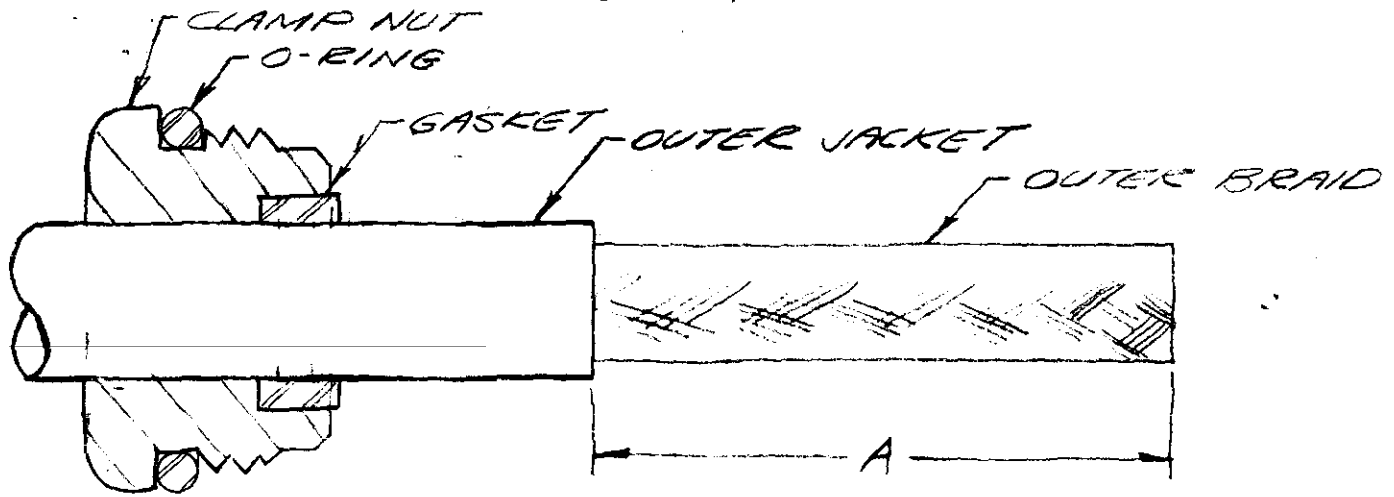
TRIM CODE CHART

CODE	A		B		C		D	
	IN	MM	IN	MM	IN	MM	IN	MM
1303	.65	17.53	.096	2.44	.166	4.22	.141	3.58

CP1300A



# CABLING PROCEDURE 1300A



KINGS ELECTRONICS CO., INC.  
100 MAIN STREET, SUITE 100  
WALLINGFORD, CT 06492

# CABLING PROCEDURE 1300

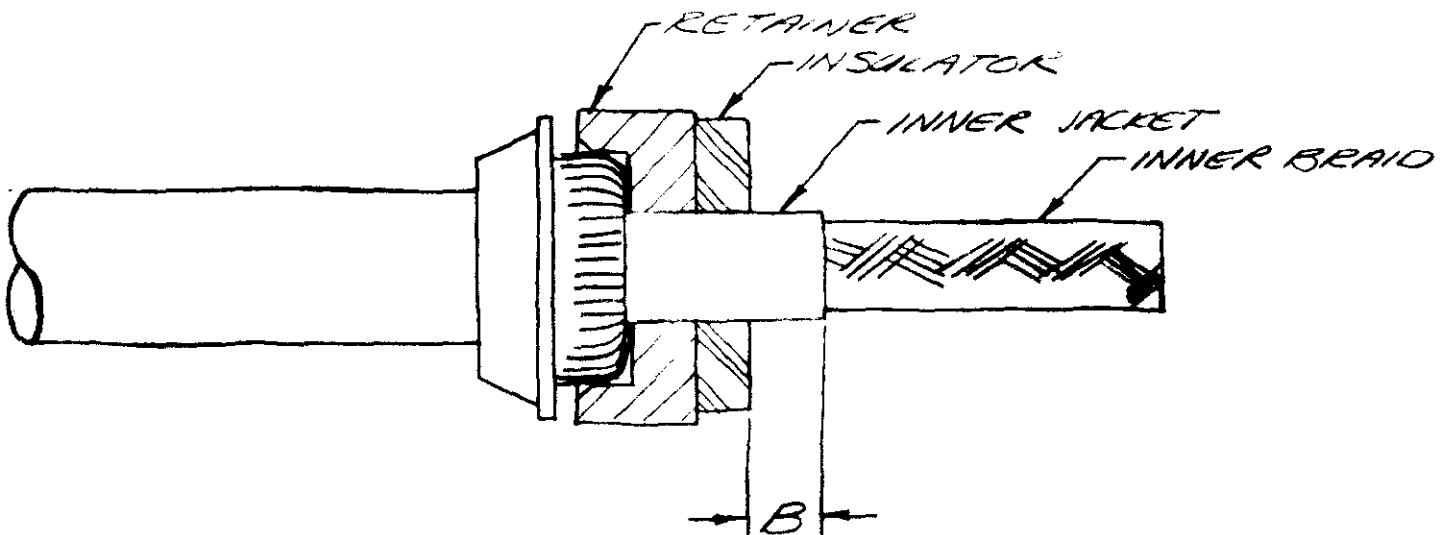
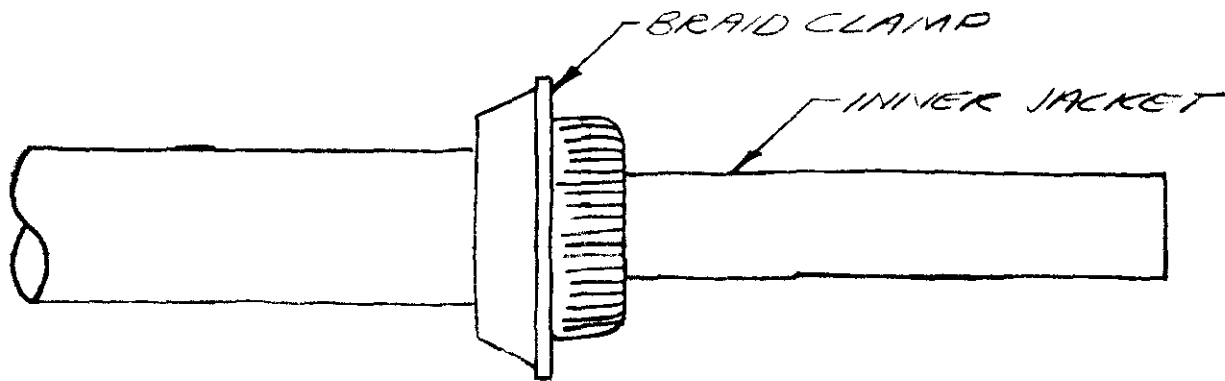
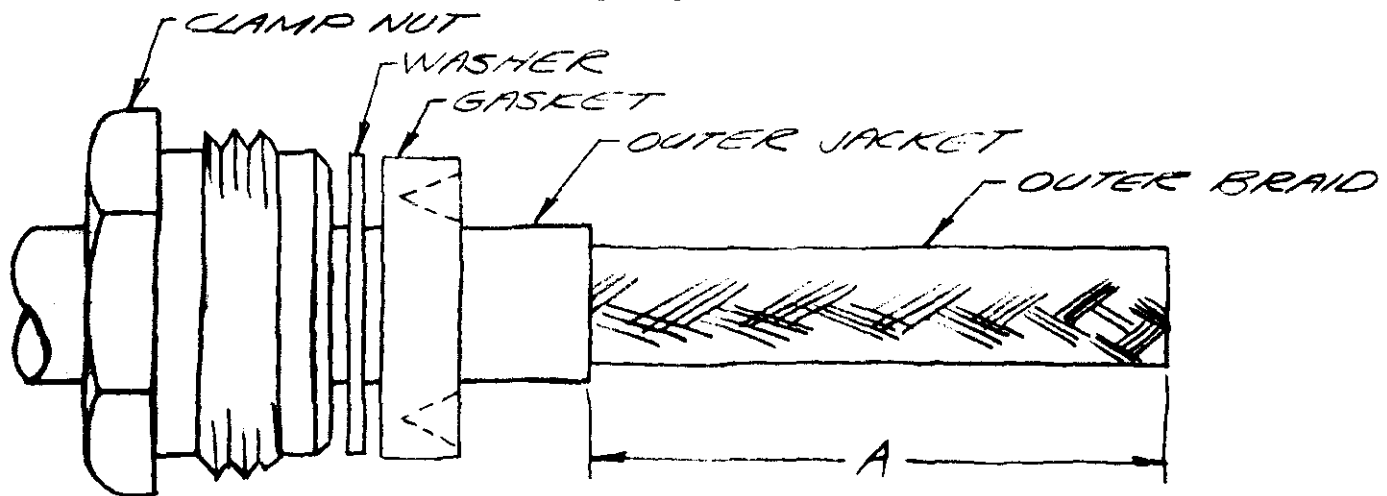
1. CUT CABLE END SQUARE, PLACE CLAMP NUT, WASHER AND GASKET OVER JACKET. REMOVE OUTER JACKET TO DIMENSION "A".
2. PLACE BRAID CLAMP OVER OUTER BRAID AGAINST JACKET CUT. COMB OUT BRAID AND FOLD BACK OVER BRAID CLAMP, TRIM IN USUAL MANNER.
3. ASSEMBLE RETAINER AND INSULATOR OVER INNER JACKET. REMOVE INNER JACKET TO DIMENSION "B".
4. PLACE BRAID CLAMP OVER INNER BRAID AGAINST INNER JACKET CUT. COMB OUT BRAID AND FOLD BACK OVER BRAID CLAMP, TRIM EVEN WITH BASE OF BRAID CLAMP.
5. PLACE WASHER OVER DIELECTRIC AGAINST BRAID AND TRIM DIELECTRIC TO DIMENSION "C" AND CENTER CONDUCTOR TO DIMENSION "D".
6. SOLDER CENTER CONTACT TO CENTER CONDUCTOR.
7. ASSEMBLE INNER INSULATOR, CONTACT AND OUTER INSULATOR, THEN INSERT INTO BODY. SLIDE BACK END PARTS FORWARD, THREAD ASSEMBLY INTO CONNECTOR BODY AND LOCK SECURELY.

CODE	A	B	C	D	
1301	11/16	.096	.210	3/32	1965-5
1302	11/16	.125	.214	.080	R.B.W. 1-5-25 1955-1-9
1303	11/16	.096	.160	.144	1995-29

**KINGS ELECTRONICS CO., Inc.**

40 MARBLEDALE ROAD  
TUCKAHOE, NEW YORK 10707

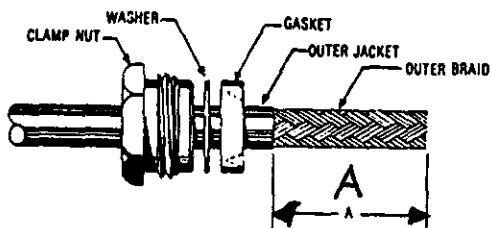
CABLING PROCEDURE  
1300



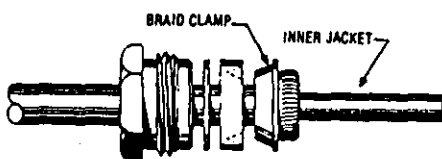
KINGS ELECTRONICS CO., Inc,  
40 MARBLEDALE ROAD  
TUCKAHOE 7, N. Y.

# CABLING PROCEDURE KINGS

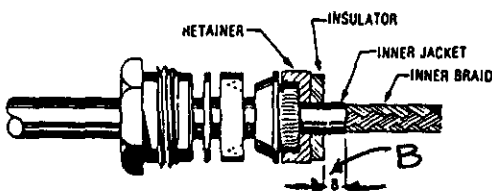
## CP-1300



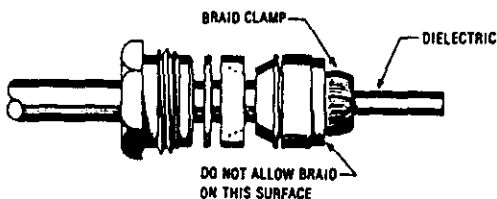
1. Cut cable end square. Slide clamp nut, washer and gasket over jacket. Remove outer jacket to dimension "A".



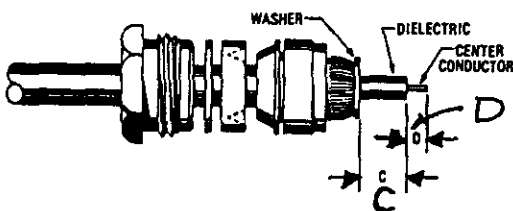
2. Place braid clamp over outer braid and against jacket cut. Comb out braid and fold back over braid clamp. Trim as shown.



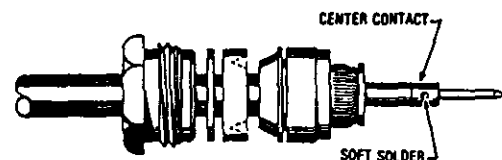
3. Assemble retainer and insulator over inner jacket. Remove inner jacket to dimension "B".



4. Place braid clamp over inner braid and against inner jacket cut. Comb out braid and fold back over braid clamp. Trim even with base of braid clamp.



5. Place washer over dielectric against braid. Trim dielectric to dimension "C" and center conductor to dimension "D".



6. Solder center contact to center conductor.



7. Assemble inner insulator, contact and outer insulator, then insert into body. Slide back end parts forward. Thread assembly into connector body and lock securely.

TRIM CODE CHART				
CODE	A	B	C	D
1301	.69	.096	.210	.084
1302	.69	.125	.214	.089
1303	.69	.096	.166	.141

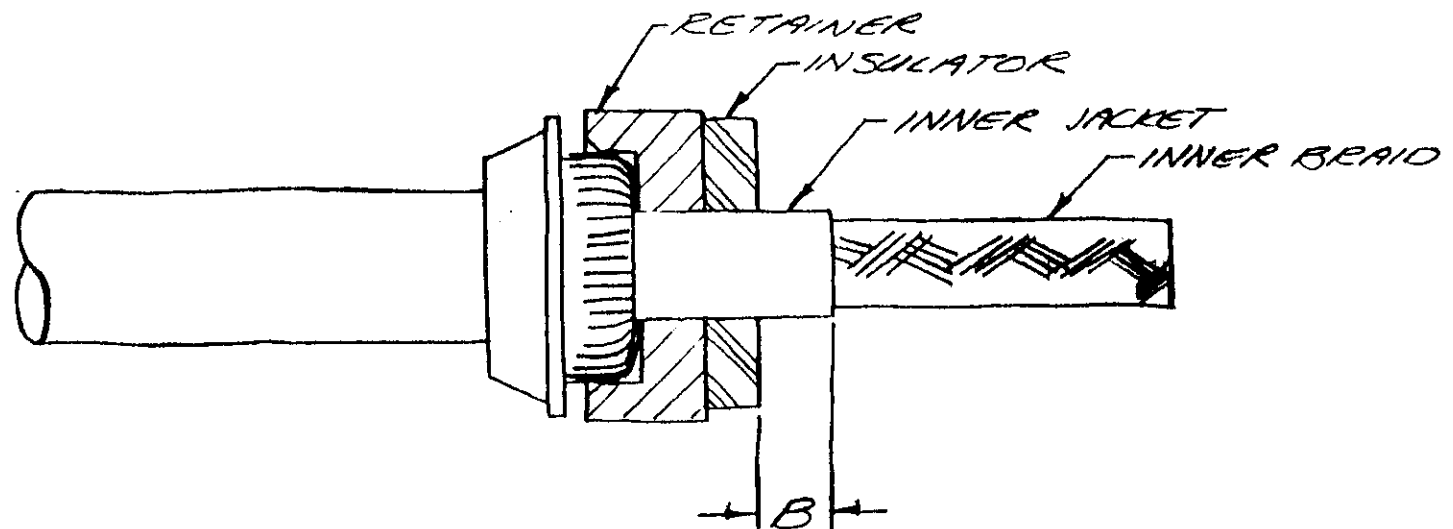
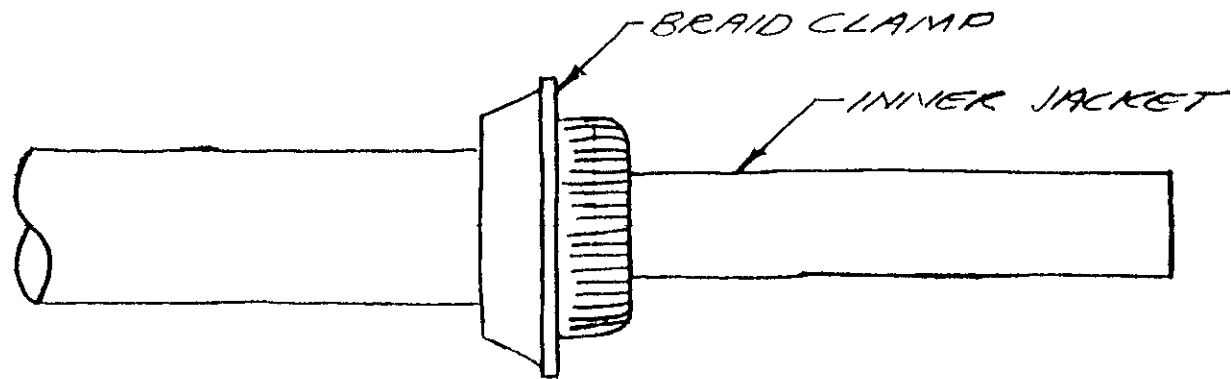
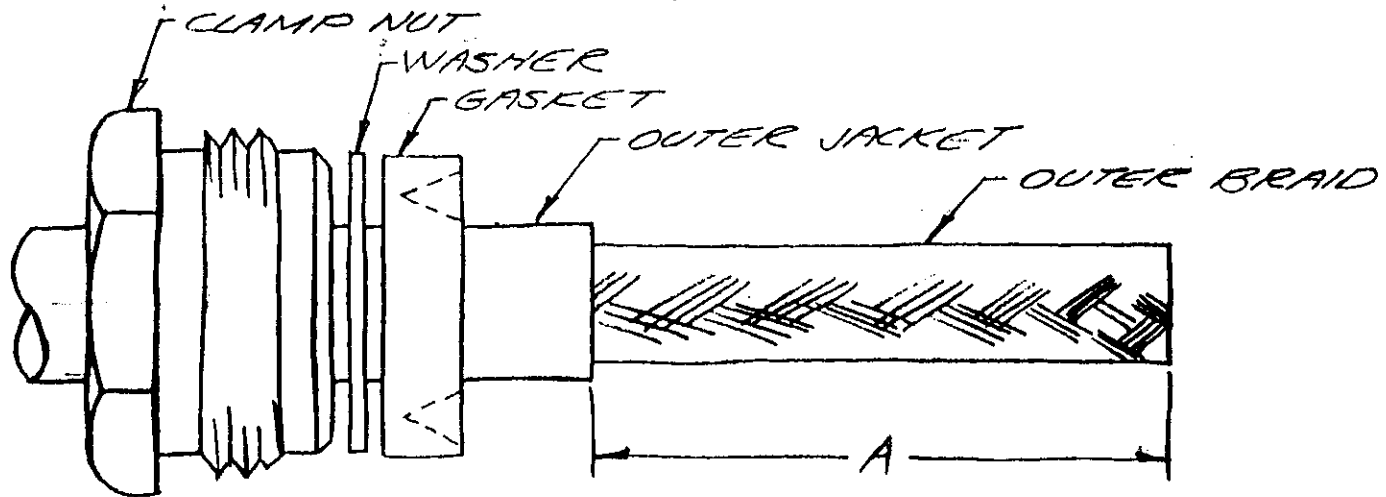
CABLING PROCEDURE 1300

1. CUT CABLE END SQUARE, PLACE CLAMP NUT, WASHER AND GASKET OVER JACKET. REMOVE OUTER JACKET TO DIMENSION "A".
2. PLACE BRAID CLAMP OVER OUTER BRAID AGAINST JACKET CUT. COMB OUT BRAID AND FOLD BACK OVER BRAID CLAMP, TRIM IN USUAL MANNER.
3. ASSEMBLE RETAINER AND INSULATOR OVER INNER JACKET. REMOVE INNER JACKET TO DIMENSION "B".
4. PLACE BRAID CLAMP OVER INNER BRAID AGAINST INNER JACKET CUT. COMB OUT BRAID AND FOLD BACK OVER BRAID CLAMP, TRIM EVEN WITH BASE OF BRAID CLAMP.
5. PLACE WASHER OVER DIELECTRIC AGAINST BRAID AND TRIM DIELECTRIC TO DIMENSION "C" AND CENTER CONDUCTOR TO DIMENSION "D".
6. SOLDER CENTER CONTACT TO CENTER CONDUCTOR.
7. ASSEMBLE INNER INSULATOR, CONTACT AND OUTER INSULATOR, THEN INSERT INTO BODY. SLIDE BACK END PARTS FORWARD, THREAD ASSEMBLY INTO CONNECTOR BODY AND LOCK SECURELY.

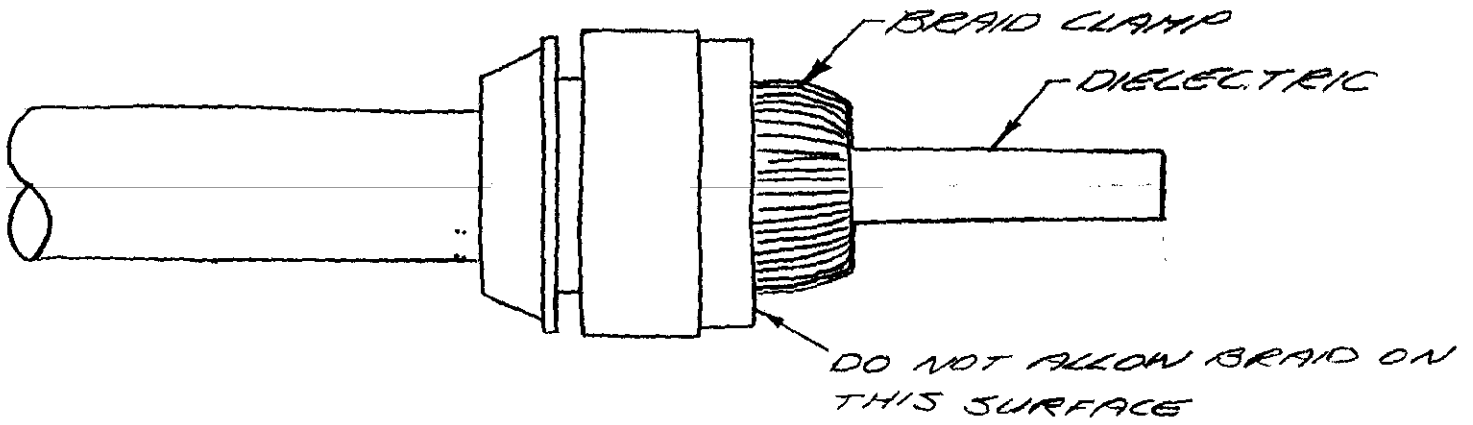
CODE	A	B	C	D
1301	11/16	.096	.210	3/32



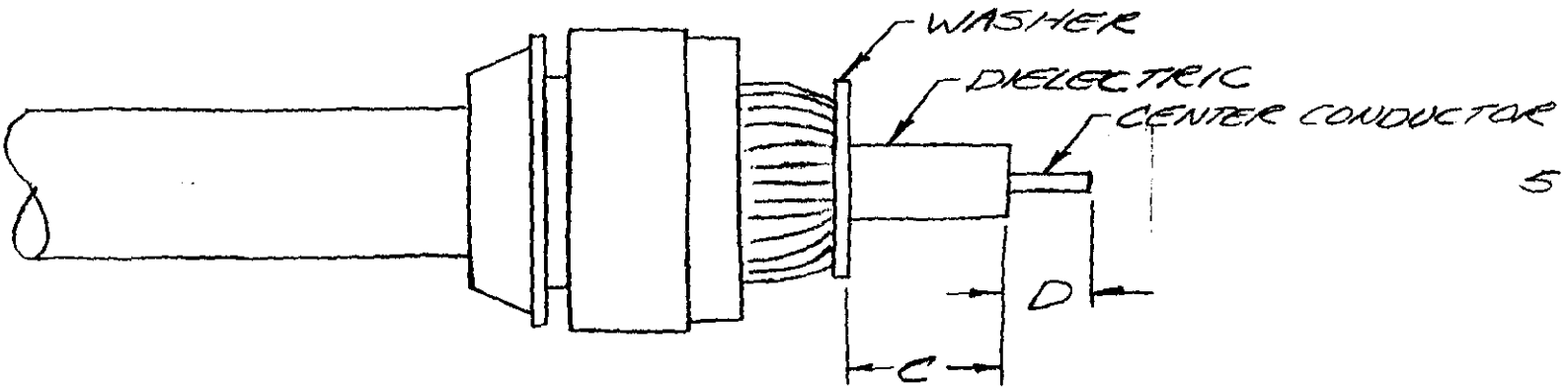
# CABLING PROCEDURE 1301



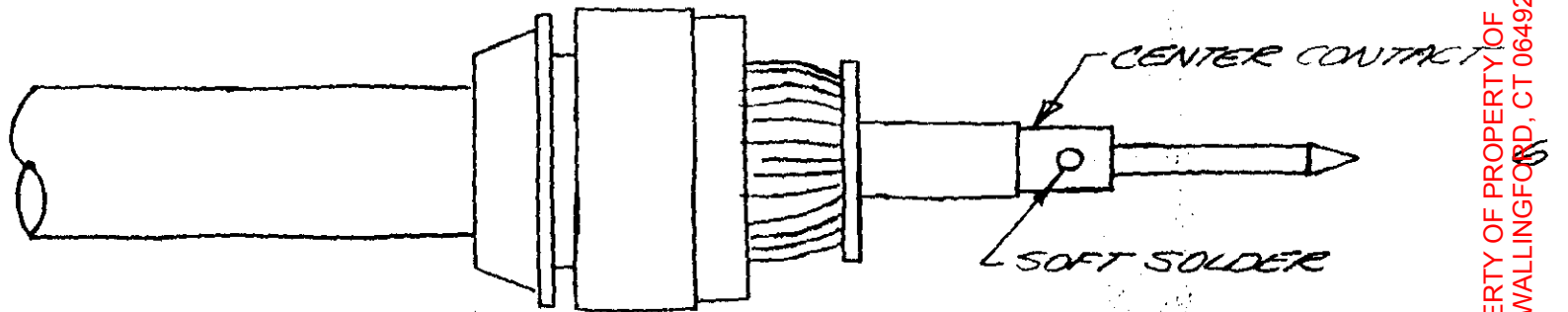
KINGS ELECTRONICS CO., Inc,  
40 MARBLEDALE ROAD  
TUCKAHOE 7, N. Y.



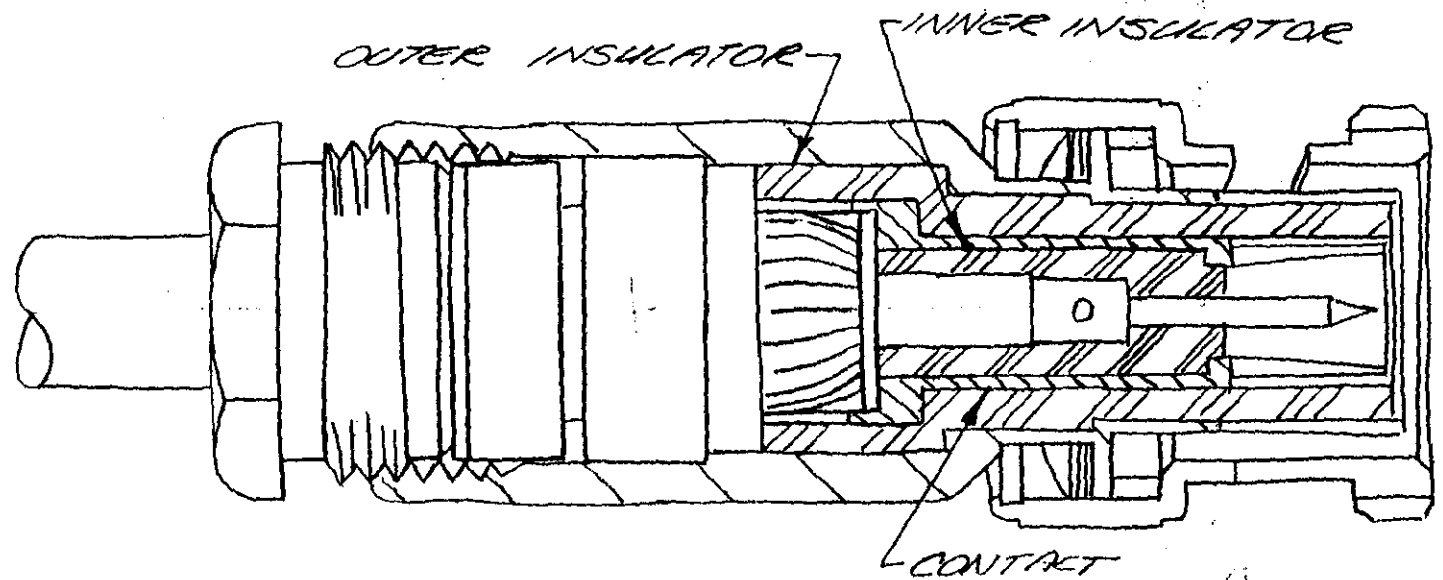
4



5

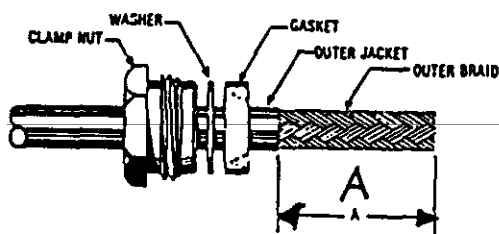


6

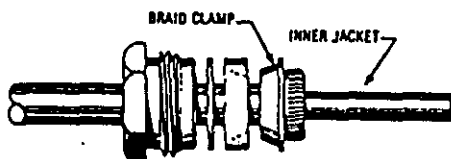


# CABLING PROCEDURE KING

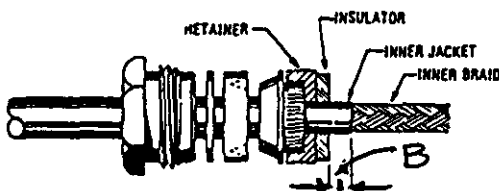
CP-1300



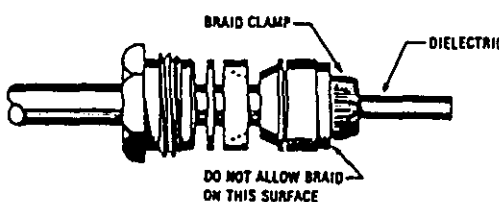
1. Cut cable end square. Slide clamp nut, washer and gasket over jacket. Remove outer jacket to dimension "A".



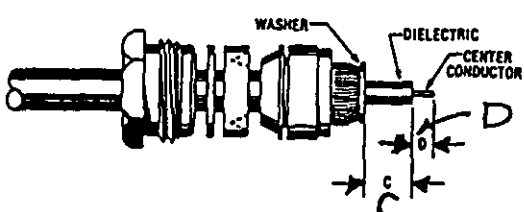
2. Place braid clamp over outer braid and against jacket cut. Comb out braid and fold back over braid clamp. Trim as shown.



3. Assemble retainer and insulator over inner jacket. Remove inner jacket to dimension "B".



4. Place braid clamp over inner braid and against inner jacket cut. Comb out braid and fold back over braid clamp. Trim even with base of braid clamp.



5. Place washer over dielectric against braid. Trim dielectric to dimension "C" and center conductor to dimension "D".



6. Solder center contact to center conductor.



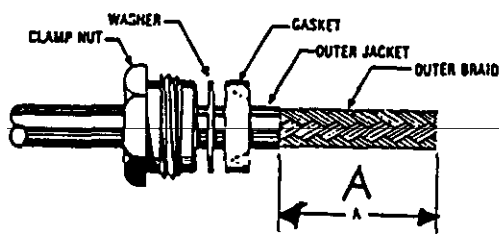
7. Assemble inner insulator, contact and outer insulator, then insert into body. Slide back end parts forward. Thread assembly into connector body and lock securely.

TRIM CODE CHART				
CODE	A	B	C	D
1301	.69	.096	.210	.094
1302	.69	.125	.214	.080
1303	.69	.096	.166	.141
1307	.69	.096	.108	.194

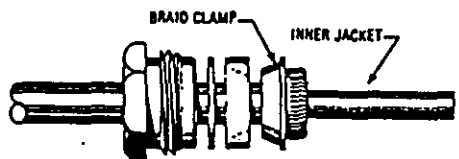
MAY 2007 THIS DRAWING BECAME THE PROPERTY OF WINCHESTER ELECTRONICS CORPORATION, WALLINGFORD, CT 06492

# CABLING PROCEDURE KING

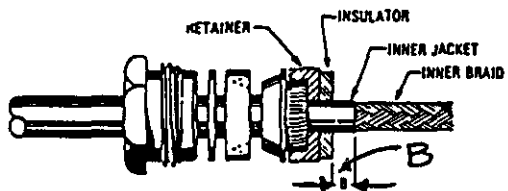
## CP-1300



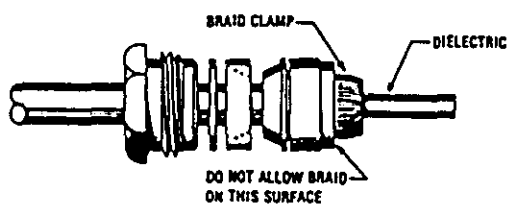
1. Cut cable end square. Slide clamp nut, washer and gasket over jacket. Remove outer jacket to dimension "A".



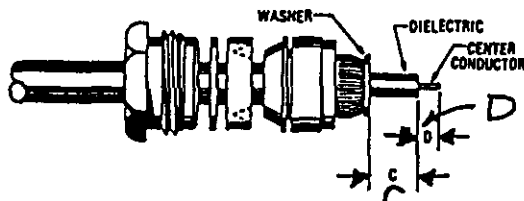
2. Place braid clamp over outer braid and against jacket cut. Comb out braid and fold back over braid clamp. Trim as shown.



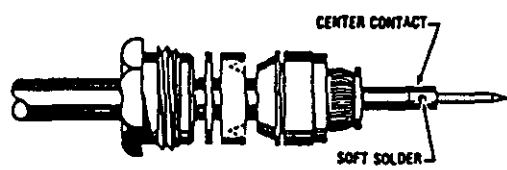
3. Assemble retainer and insulator over inner jacket. Remove inner jacket to dimension "B".



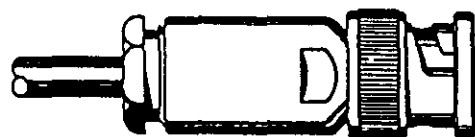
4. Place braid clamp over inner braid and against inner jacket cut. Comb out braid and fold back over braid clamp. Trim even with base of braid clamp.



5. Place washer over dielectric against braid. Trim dielectric to dimension "C" and center conductor to dimension "D".



6. Solder center contact to center conductor.



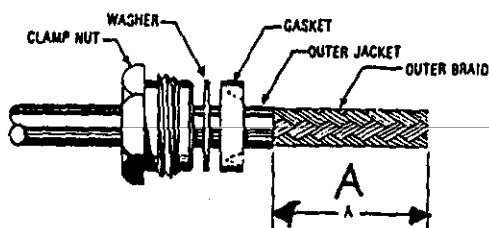
7. Assemble inner insulator, contact and outer insulator, then insert into body. Slide back end parts forward. Thread assembly into connector body and lock securely.

TRIM CODE CHART				
CODE	A	B	C	D
1301	.69	.096	.210	.094
1302	.69	.125	.214	.080
1303	.69	.096	.166	.144
1307	.69	.096	.108	.194

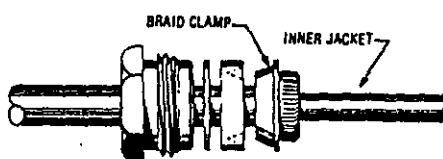
MAY 2007 THIS DRAWING BECAME THE PROPERTY OF WINCHESTER ELECTRONICS CORPORATION, WALLINGFORD, CT 06492

# CABLING PROCEDURE KING

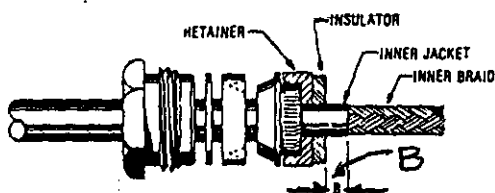
CP-1300



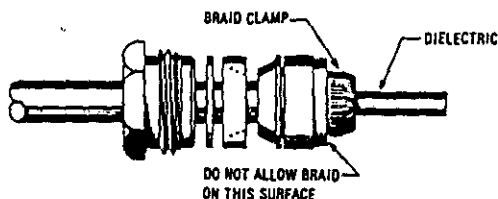
1. Cut cable end square. Slide clamp nut, washer and gasket over jacket. Remove outer jacket to dimension "A".



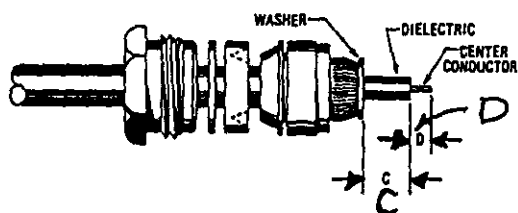
2. Place braid clamp over outer braid and against jacket cut. Comb out braid and fold back over braid clamp. Trim as shown.



3. Assemble retainer and insulator over inner jacket. Remove inner jacket to dimension "B".



4. Place braid clamp over inner braid and against inner jacket cut. Comb out braid and fold back over braid clamp. Trim even with base of braid clamp.



5. Place washer over dielectric against braid. Trim dielectric to dimension "C" and center conductor to dimension "D".



6. Solder center contact to center conductor.



7. Assemble inner insulator, contact and outer insulator, then insert into body. Slide back end parts forward. Thread assembly into connector body and lock securely.

TRIM CODE CHART

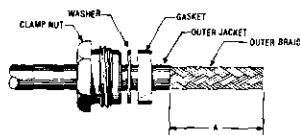
CODE	A	B	C	D
1301	.69	.096	.210	.004

# CABLING PROCEDURE

KINGS

CP-1300 / CP-1300A / CP-2400

## CP-1300



1. Cut cable end square. Slide clamp nut, washer and gasket over jacket. Remove outer jacket to dimension "A".



2. Place braid clamp over outer braid and against jacket cut. Comb out braid and fold back over braid clamp. Trim as shown.



3. Assemble retainer and insulator over inner jacket. Remove inner jacket to dimension "B".



4. Place braid clamp over inner braid and against inner jacket cut. Comb out braid and fold back over braid clamp. Trim even with base of braid clamp.



5. Place washer over dielectric against braid. Trim dielectric to dimension "C" and center conductor to dimension "D".



6. Solder center contact to center conductor.

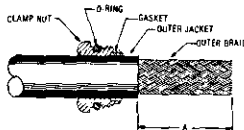


7. Assemble inner insulator, contact and outer insulator, then insert into body. Slide back end parts forward. Thread assembly into connector body and lock securely.

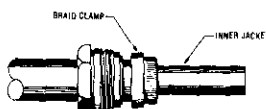
TRIM CODE CHART

CODE	A	B	C	D
1301	.69	.096	.210	.094
1302	.69	.125	.214	.080
1303	.69	.096	.166	.141

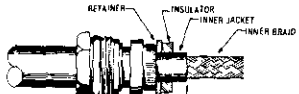
## CP-1300A



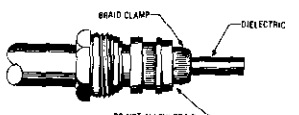
1. Cut cable end square. Assemble O-ring. Slide clamp nut and gasket over jacket. Remove outer jacket to dimension "A".



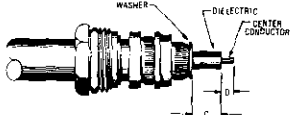
2. Place braid clamp over outer braid and against jacket cut. Comb out braid and fold back over braid clamp. Trim as shown.



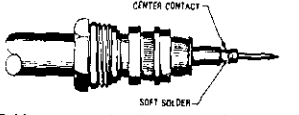
3. Assemble retainer and insulator over inner jacket. Remove inner jacket to dimension "B".



4. Place braid clamp over inner braid and against inner jacket cut. Comb out braid and fold back over braid clamp. Trim even with base of braid clamp.



5. Place washer over dielectric against braid. Trim dielectric to dimension "C" and center conductor to dimension "D".



6. Solder center contact to center conductor.

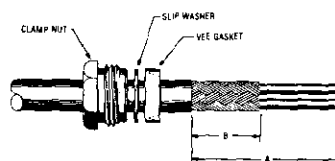


7. Assemble inner insulator, contact and outer insulator, then insert into body. Slide back end parts forward. Thread assembly into connector body and lock securely.

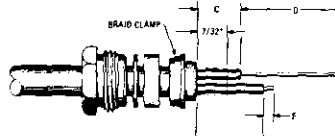
TRIM CODE CHART

CODE	A	B	C	D
1301A	11/16	.096	.210	3/32

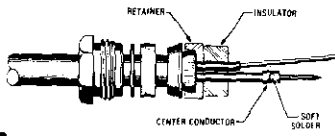
## CP-2400



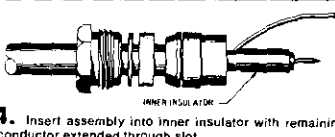
1. Cut cable end square. Slide clamp nut, slip washer and gasket over jacket. Trim jacket and outer braid to dimensions "A" and "B" respectively.



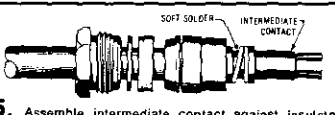
2. Comb out braid. Place braid clamp over braid and against jacket cut. Fold braid back over braid clamp and trim as shown. Trim dielectrics and inner conductors to dimensions indicated. \*For cable with woven cloth layer, trim as indicated.



3. Assemble retainer and insulator. Soft solder center contact.



4. Insert assembly into inner insulator with remaining conductor extended through slot.



5. Assemble intermediate contact against insulator. Wrap remaining conductor tightly around intermediate contact and soft solder.



6. Assemble outer insulator over intermediate contact. Thread assembly into connector, and lock securely. \*Vee" gasket must be split by braid clamp.

TRIM CODE CHART

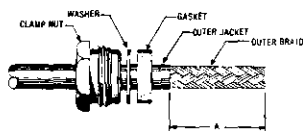
CODE	A	B	C
2401	1-7/8	1/2	5/16
	D	E	F
	1-1/2	31/64	5/64

# CABLING PROCEDURE

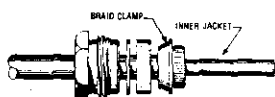
**KINGS**

CP-1300 / CP-1300A / CP-2400

## CP-1300



1. Cut cable end square. Slide clamp nut, washer and gasket over jacket. Remove outer jacket to dimension "A".



2. Place braid clamp over outer braid and against jacket cut. Comb out braid and fold back over braid clamp. Trim as shown.



3. Assemble retainer and insulator over inner jacket. Remove inner jacket to dimension "B".



4. Place braid clamp over inner braid and against inner jacket cut. Comb out braid and fold back over braid clamp. Trim even with base of braid clamp.



5. Place washer over dielectric against braid. Trim dielectric to dimension "C" and center conductor to dimension "D".



6. Solder center contact to center conductor.

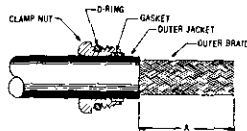


7. Assemble inner insulator, contact and outer insulator, then insert into body. Slide back end parts forward. Thread assembly into connector body and lock securely.

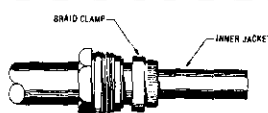
TRIM CODE CHART

CODE	A	B	C	D
1301	.69	.096	.210	.094
1302	.69	.125	.214	.080
1303	.69	.096	.166	.141

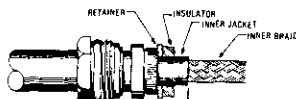
## CP-1300A



1. Cut cable end square. Assemble O-ring. Slide clamp nut and gasket over jacket. Remove outer jacket to dimension "A".



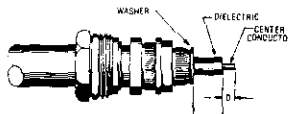
2. Place braid clamp over outer braid and against jacket cut. Comb out braid and fold back over braid clamp. Trim as shown.



3. Assemble retainer and insulator over inner jacket. Remove inner jacket to dimension "B".



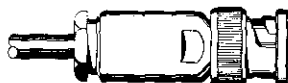
4. Place braid clamp over inner braid and against inner jacket cut. Comb out braid and fold back over braid clamp. Trim even with base of braid clamp.



5. Place washer over dielectric against braid. Trim dielectric to dimension "C" and center conductor to dimension "D".



6. Solder center contact to center conductor.

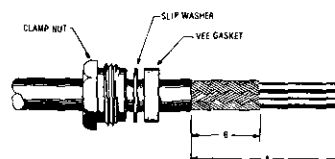


7. Assemble inner insulator, contact and outer insulator, then insert into body. Slide back end parts forward. Thread assembly into connector body and lock securely.

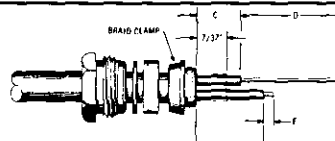
TRIM CODE CHART

CODE	A	B	C	D
1301A	11/16	.096	.210	3/32

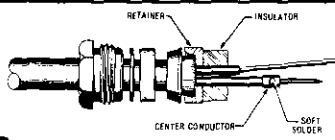
## CP-2400



1. Cut cable end square. Slide clamp nut, slip washer and Vee gasket over jacket. Trim jacket and outer braid to dimensions "A" and "B" respectively.



2. Comb out braid. Place braid clamp over braid and against jacket cut. Fold braid back over braid clamp and trim as shown. Trim dielectrics and inner conductors to dimensions indicated. \*For cable with woven cloth layer, trim as indicated.



3. Assemble retainer and insulator. Soft solder center contact.



4. Insert assembly into inner insulator with remaining conductor extended through slot.



5. Assemble intermediate contact against insulator. Wrap remaining conductor tightly around intermediate contact and soft solder.



6. Assemble outer insulator over intermediate contact. Thread assembly into connector, and lock securely. \*Vee" gasket must be split by braid clamp.

TRIM CODE CHART

CODE	A	B	C
2401	1-7/8	1/2	5/16
	D	E	F
	1-1/2	31/64	5/64

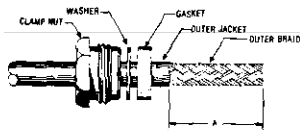


# CABLING PROCEDURE

KINGS

CP-1300 / CP-1300A / CP-2400

## CP-1300



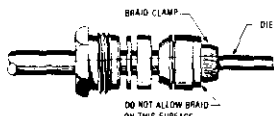
1. Cut cable end square. Slide clamp nut, washer and gasket over jacket. Remove outer jacket to dimension "A".



2. Place braid clamp over outer braid and against jacket cut. Comb out braid and fold back over braid clamp. Trim as shown.



3. Assemble retainer and insulator over inner jacket. Remove inner jacket to dimension "B".



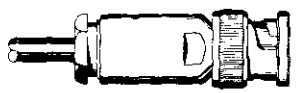
4. Place braid clamp over inner braid and against inner jacket cut. Comb out braid and fold back over braid clamp. Trim even with base of braid clamp.



5. Place washer over dielectric against braid. Trim dielectric to dimension "C" and center conductor to dimension "D".



6. Solder center contact to center conductor.

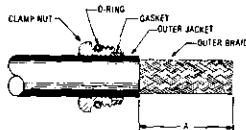


7. Assemble inner insulator, contact and outer insulator, then insert into body. Slide back end parts forward. Thread assembly into connector body and lock securely.

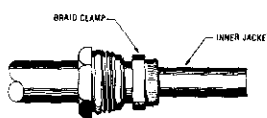
TRIM CODE CHART

CODE	A	B	C	D
1301	.69	.096	.210	.094
1302	.69	.125	.214	.080
1303	.69	.096	.166	.141

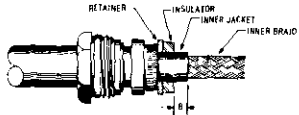
## CP-1300A



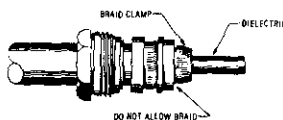
1. Cut cable end square. Assemble O-ring. Slide clamp nut and gasket over jacket. Remove outer jacket to dimension "A".



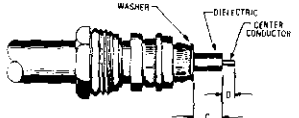
2. Place braid clamp over outer braid and against jacket cut. Comb out braid and fold back over braid clamp. Trim as shown.



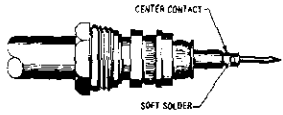
3. Assemble retainer and insulator over inner jacket. Remove inner jacket to dimension "B".



4. Place braid clamp over inner braid and against inner jacket cut. Comb out braid and fold back over braid clamp. Trim even with base of braid clamp.



5. Place washer over dielectric against braid. Trim dielectric to dimension "C" and center conductor to dimension "D".



6. Solder center contact to center conductor.

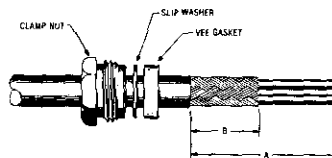


7. Assemble inner insulator, contact and outer insulator, then insert into body. Slide back end parts forward. Thread assembly into connector body and lock securely.

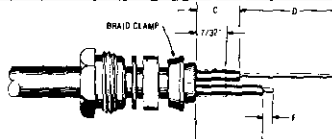
TRIM CODE CHART

CODE	A	B	C	D
1301A	11/16	.096	.210	3/32

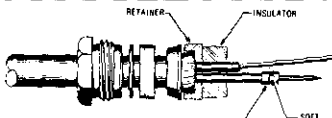
## CP-2400



1. Cut cable end square. Slide clamp nut, slip washer and gasket over jacket. Trim jacket and outer braid to dimensions "A" and "B" respectively.



2. Comb out braid. Place braid clamp over braid and against jacket cut. Fold braid back over braid clamp and trim as shown. Trim dielectrics and inner conductors to dimensions indicated. \*For cable with woven cloth layer, trim as indicated.



3. Assemble retainer and insulator. Soft solder center contact.



4. Insert assembly into inner insulator with remaining conductor extended through slot.



5. Assemble intermediate contact against insulator. Wrap remaining conductor tightly around intermediate contact and soft solder.



6. Assemble outer insulator over intermediate contact. Thread assembly into connector, and lock securely. \*Vee gasket must be split by braid clamp.

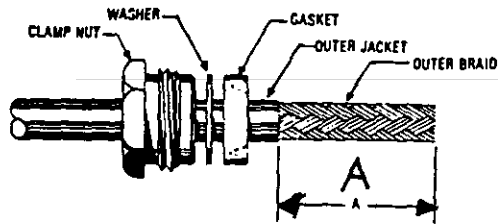
TRIM CODE CHART

CODE	A	B	C
2401	1-7/8	1/2	5/16
	D	E	F
	1-1/2	31/64	5/64

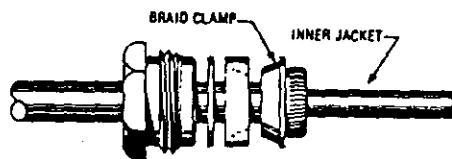


# CABLING PROCEDURE KINGS

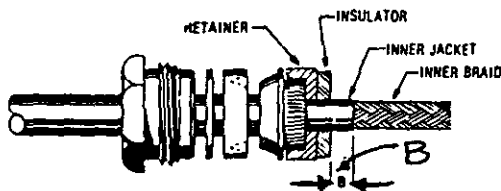
## CP-1300



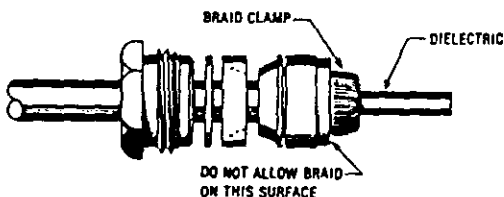
- 1.** Cut cable end square. Slide clamp nut, washer and gasket over jacket. Remove outer jacket to dimension "A".



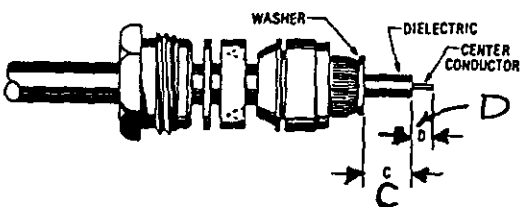
- 2.** Place braid clamp over outer braid and against jacket cut. Comb out braid and fold back over braid clamp. Trim as shown.



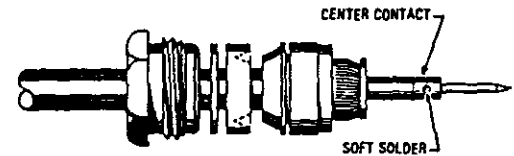
- 3.** Assemble retainer and insulator over inner jacket. Remove inner jacket to dimension "B".



- 4.** Place braid clamp over inner braid and against inner jacket cut. Comb out braid and fold back over braid clamp. Trim even with base of braid clamp.



- 5.** Place washer over dielectric against braid. Trim dielectric to dimension "C" and center conductor to dimension "D".



- 6.** Solder center contact to center conductor.



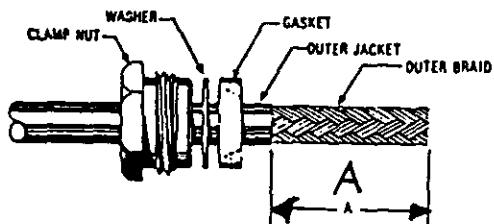
- 7.** Assemble inner insulator, contact and outer insulator, then insert into body. Slide back end parts forward. Thread assembly into connector body and lock securely.

### TRIM CODE CHART

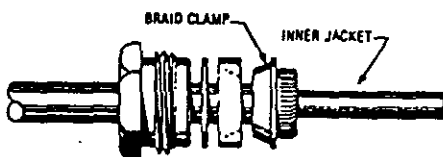
CODE	A	B	C	D
1301	.69	.096	.210	.094
1302	.69	.125	.214	.080
1303	.69	.096	.166	.141
1307	.69	.096	.108	.194

# CABLING PROCEDURE KINGS

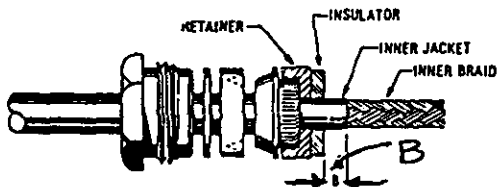
## CP-1300



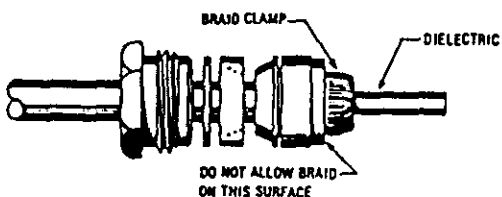
1. Cut cable end square. Slide clamp nut, washer and gasket over jacket. Remove outer jacket to dimension "A".



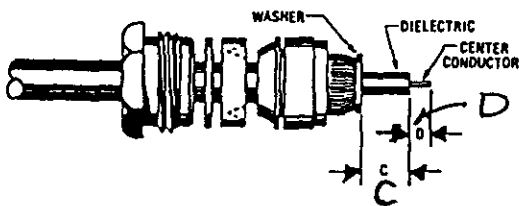
2. Place braid clamp over outer braid and against jacket cut. Comb out braid and fold back over braid clamp. Trim as shown.



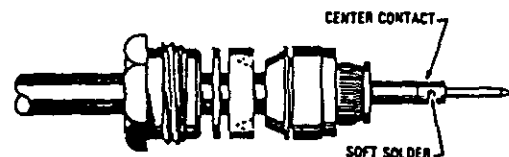
3. Assemble retainer and insulator over inner jacket. Remove inner jacket to dimension "B".



4. Place braid clamp over inner braid and against inner jacket cut. Comb out braid and fold back over braid clamp. Trim even with base of braid clamp.



5. Place washer over dielectric against braid. Trim dielectric to dimension "C" and center conductor to dimension "D".



6. Solder center contact to center conductor.



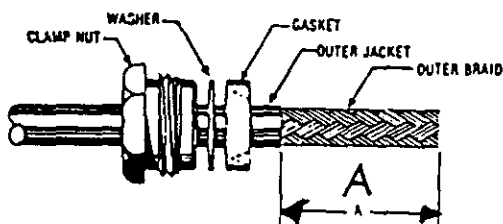
7. Assemble inner insulator, contact and outer insulator, then insert into body. Slide back end parts forward. Thread assembly into connector body and lock securely.

### TRIM CODE CHART

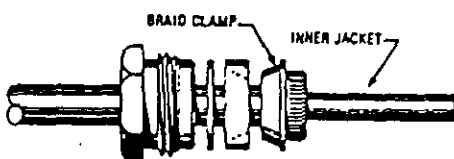
CODE	A	B	C	D
1301	.69	.096	.210	.094
1302	.69	.125	.214	.080
1303	.69	.096	.166	.141
1307	.69	.096	.108	.104

# CABLING PROCEDURE KINGS

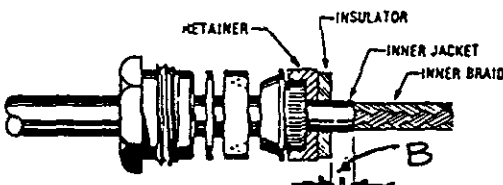
## CP-1300



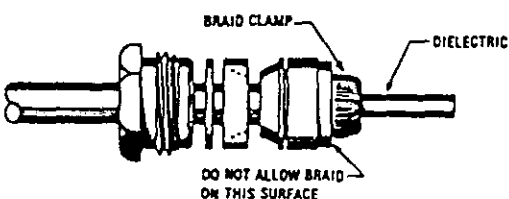
1. Cut cable end square. Slide clamp nut, washer and gasket over jacket. Remove outer jacket to dimension "A".



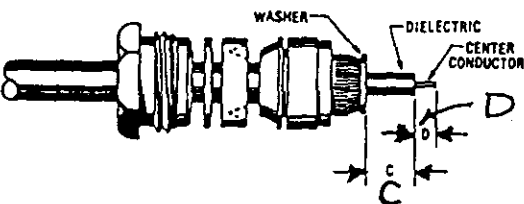
2. Place braid clamp over outer braid and against jacket cut. Comb out braid and fold back over braid clamp. Trim as shown.



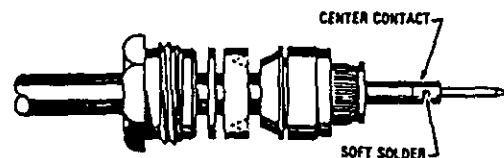
3. Assemble retainer and insulator over inner jacket. Remove inner jacket to dimension "B".



4. Place braid clamp over inner braid and against inner jacket cut. Comb out braid and fold back over braid clamp. Trim even with base of braid clamp.



5. Place washer over dielectric against braid. Trim dielectric to dimension "C" and center conductor to dimension "D".



6. Solder center contact to center conductor.



7. Assemble inner insulator, contact and outer insulator, then insert into body. Slide back end parts forward. Thread assembly into connector body and lock securely.

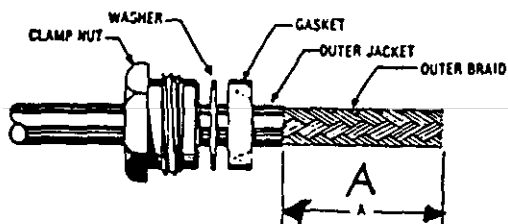
### TRIM CODE CHART

CODE	A	B	C	D
1301	.69	.096	.210	.094
1302	.69	.125	.214	.080
1303	.69	.096	.166	.141
1307	.69	.096	.108	.194

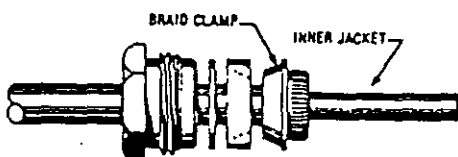
MAY 2007 THIS DRAWING BECAME THE PROPERTY OF WINCHESTER ELECTRONICS CORPORATION, WALLINGFORD, CT 06492

# CABLING PROCEDURE KINGS

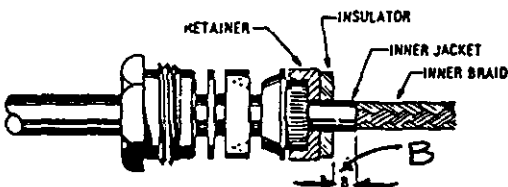
## CP-1300



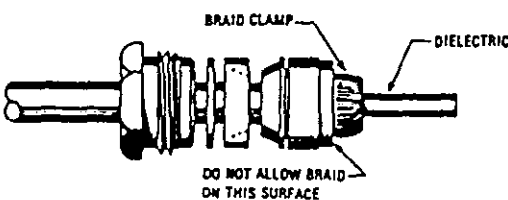
1. Cut cable end square. Slide clamp nut, washer and gasket over jacket. Remove outer jacket to dimension "A".



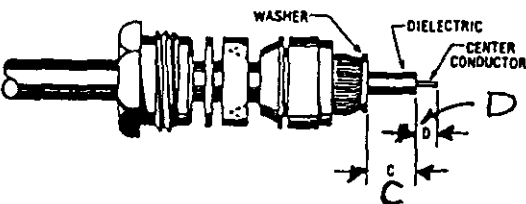
2. Place braid clamp over outer braid and against jacket cut. Comb out braid and fold back over braid clamp. Trim as shown.



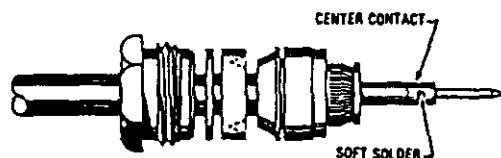
3. Assemble retainer and insulator over inner jacket. Remove inner jacket to dimension "B".



4. Place braid clamp over inner braid and against inner jacket cut. Comb out braid and fold back over braid clamp. Trim even with base of braid clamp.



5. Place washer over dielectric against braid. Trim dielectric to dimension "C" and center conductor to dimension "D".



6. Solder center contact to center conductor.



7. Assemble inner insulator, contact and outer insulator, then insert into body. Slide back end parts forward. Thread assembly into connector body and lock securely.

TRIM CODE CHART

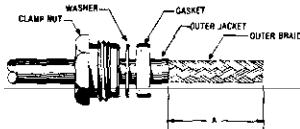
CODE	A	B	C	D
1301	.69	.096	.210	.094
1302	.69	.125	.214	.080
1303	.69	.096	.166	.141
1307	.69	.096	.108	.184

# CABLING PROCEDURE

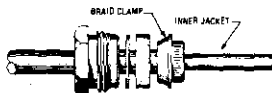
KINGS

CP-1300 / CP-1300A / CP-2400

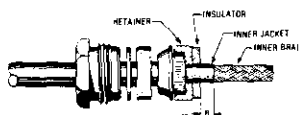
## CP-1300



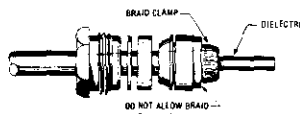
1. Cut cable end square. Slide clamp nut, washer and gasket over jacket. Remove outer jacket to dimension "A".



2. Place braid clamp over outer braid and against jacket cut. Comb out braid and fold back over braid clamp. Trim as shown.



3. Assemble retainer and insulator over inner jacket. Remove inner jacket to dimension "B".



4. Place braid clamp over inner braid and against inner jacket cut. Comb out braid and fold back over braid clamp. Trim even with base of braid clamp.



5. Place washer over dielectric against braid. Trim dielectric to dimension "C" and center conductor to dimension "D".



6. Solder center contact to center conductor.

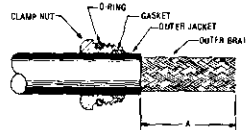


7. Assemble inner insulator, contact and outer insulator, then insert into body. Slide back end parts forward. Thread assembly into connector body and lock securely.

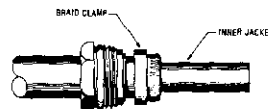
TRIM CODE CHART

CODE	A	B	C	D
1301	.69	.096	.210	.094
1302	.69	.125	.214	.080
1303	.69	.096	.166	.141

## CP-1300A



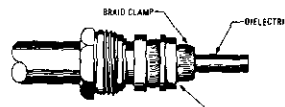
1. Cut cable end square. Assemble O-ring. Slide clamp nut and gasket over jacket. Remove outer jacket to dimension "A".



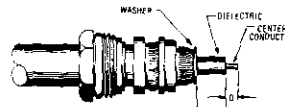
2. Place braid clamp over outer braid and against jacket cut. Comb out braid and fold back over braid clamp. Trim as shown.



3. Assemble retainer and insulator over inner jacket. Remove inner jacket to dimension "B".



4. Place braid clamp over inner braid and against inner jacket cut. Comb out braid and fold back over braid clamp. Trim even with base of braid clamp.



5. Place washer over dielectric against braid. Trim dielectric to dimension "C" and center conductor to dimension "D".



6. Solder center contact to center conductor.

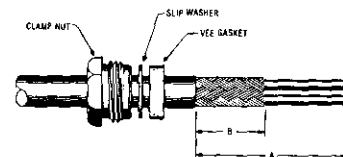


7. Assemble inner insulator, contact and outer insulator, then insert into body. Slide back end parts forward. Thread assembly into connector body and lock securely.

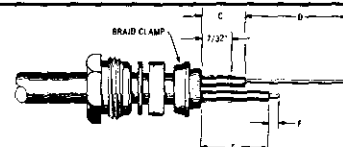
TRIM CODE CHART

CODE	A	B	C	D
1301A	11/16	.096	.210	3/32

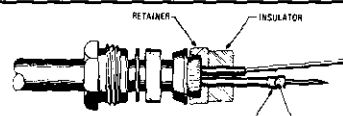
## CP-2400



1. Cut cable end square. Slide clamp nut, slip washer and gasket over jacket. Trim jacket and outer braid to dimensions "A" and "B" respectively.



2. Comb out braid. Place braid clamp over braid and against jacket cut. Fold braid back over braid clamp and trim as shown. Trim dielectrics and inner conductors to dimensions indicated. For cable with woven cloth layer, trim as indicated.



3. Assemble retainer and insulator. Soft solder center contact.



4. Insert assembly into inner insulator with remaining conductor extended through slot.



5. Assemble intermediate contact against insulator. Wrap remaining conductor tightly around intermediate contact and soft solder.



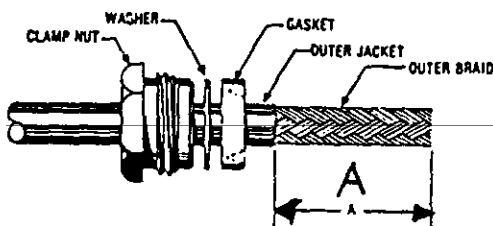
6. Assemble outer insulator over intermediate contact. Thread assembly into connector, and lock securely. "Vee" gasket must be split by braid clamp.

TRIM CODE CHART

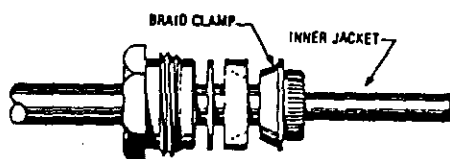
CODE	A	B	C
2401	1-7/8	1/2	5/16
	D	E	F
	1-1/2	31/64	5/64

# CABLING PROCEDURE KING

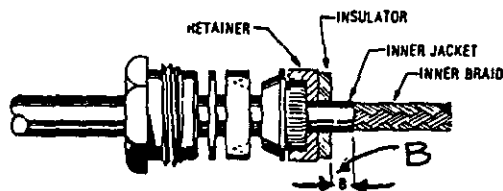
## CP-1300



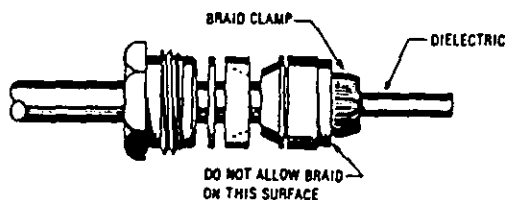
1. Cut cable end square. Slide clamp nut, washer and gasket over jacket. Remove outer jacket to dimension "A".



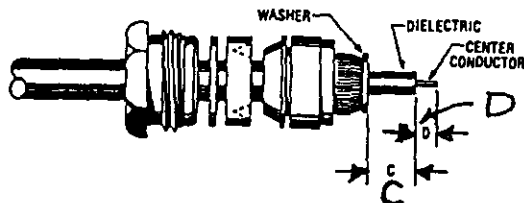
2. Place braid clamp over outer braid and against jacket cut. Comb out braid and fold back over braid clamp. Trim as shown.



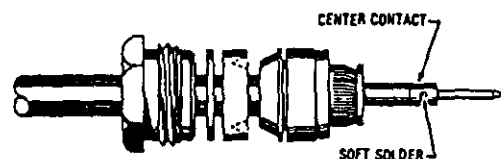
3. Assemble retainer and insulator over inner jacket. Remove inner jacket to dimension "B".



4. Place braid clamp over inner braid and against inner jacket cut. Comb out braid and fold back over braid clamp. Trim even with base of braid clamp.



5. Place washer over dielectric against braid. Trim dielectric to dimension "C" and center conductor to dimension "D".



6. Solder center contact to center conductor.



7. Assemble inner insulator, contact and outer insulator, then insert into body. Slide back end parts forward. Thread assembly into connector body and lock securely.

TRIM CODE CHART

CODE	A	B	C	D
1301	.69	.096	.210	.094
1302	.69	.125	.214	.080
1303	.69	.096	.166	.141
1307	.69	.096	.108	.104