

# Assembly instruction Series MCX AD 09.05.00 4726/KRI No. 27307

## Tools and materials required:

Stanley blade  
Scissors  
small soldering iron 40 Watt  
Solder Sn/Pb 60/40  
activated rosin flux  
Assembly-tool 74 Z-0-0-30

Angle plug for flexible cable

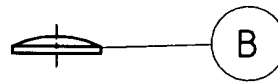
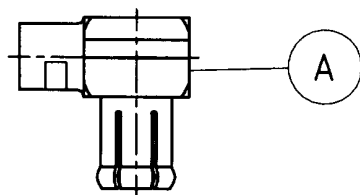
Cable entry: soldered

Connector types: (e.g.)

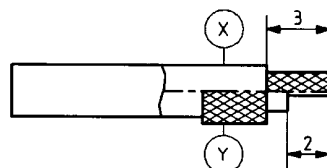
16 MCX-50-2-102

16 MCX-50-2-16

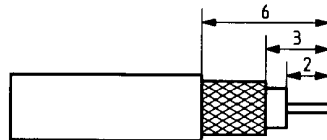
|                                       |                       |                          |                         |                            |
|---------------------------------------|-----------------------|--------------------------|-------------------------|----------------------------|
| This connector is supplied in 2 parts | Group:                | A                        | B                       | E                          |
|                                       | Suitable cables e.g.: | RG 178 B/U<br>RG 196 A/U | RG 316 /U<br>RG 188 A/U | RG 405 /U<br>EZ 86 (.086") |
|                                       | Centre contact:       | soldered                 | soldered                | soldered                   |
|                                       | Braid:                | soldered                 | soldered                | soldered                   |



Gruppe A



Gruppe B



Gruppe E



**IMPORTANT:** When using a shrink tube please slide it on cable prior to stripping.

Group A:

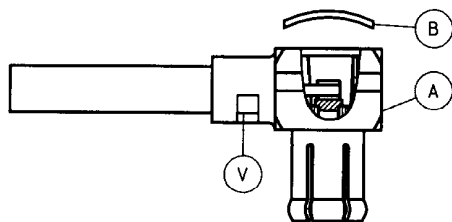
Strip cable jacket according to diagram section X.  
Push back braid over cable jacket and strip dielectric according to diagram section Y.

Group B+E:

Strip cable according to diagram.

**CAUTION:** Do not damage braid, dielectric and inner conductor of cable!

Tin inner conductors of group A+B slightly.

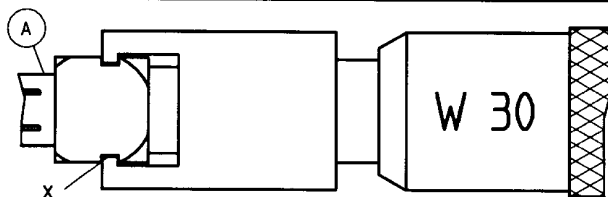


Push cable into body A as far as the stop.

Solder braid to body A at gap V.

Remove soldering iron immediately to avoid melting of dielectric.

Solder inner conductor and place cover B loosely on rear opening of body A.



Insert assembly tool 74 Z-0-0-30 into groove X.  
and press cover B into body A  
by rotating the handle of the assembly tool.

SUHNER's skilled staff and specialised equipment are available to carry out complete R.F.lead-assembly on your behalf. We mount your connectors on cables at economic prices! Please contact our representative for further details of this service



HUBER + SUHNER AG CH-9100 HERISAU

Deutscher Text siehe Rückseite