

Assembly instruction

Series QLA

AA 10.07.02
4952/srm

No.27519

Tools and materials required:

Stanley blade

Scissors

Crimp tool (see table below)

Straight connector for flexible cables

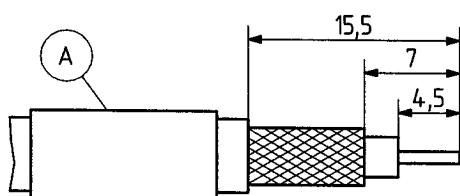
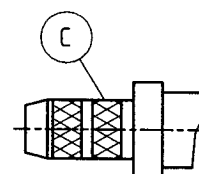
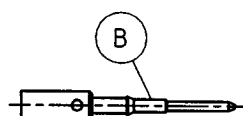
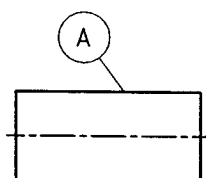
Cable entry: SUHNER Full Crimp

Connector types: (e.g.)

11 QLA-01-3-1

11 QLA-01-3-2

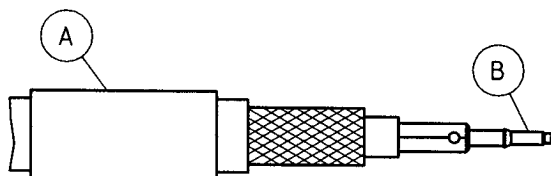
This connector is supplied in 3 parts.	Suitable cables e.g.:	RG 223/U
	Centre contact:	cavity 2
	Braid:	cavity B
	Crimp tool:	2 B orange



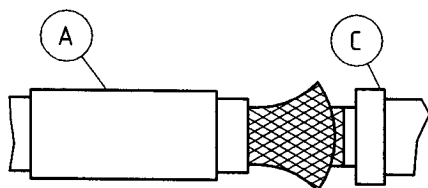
Slide ferrule A onto cable.

Prepare cable according to diagram.

CAUTION: Do not damage braid, inner conductor and dielectric of cable!

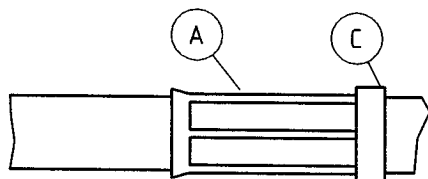


Push contact B over inner conductor of cable to abut cable dielectric and crimp.



Splay out braid.

Insert prepared cable into connector body C until it stops. Ensure that braid lies above the crimp neck.



Slide ferrule A over braid

and crimp as close to connector body C as possible.

SUHNER's skilled staff and specialised equipment are available to carry out complete R.F. lead-assembly on your behalf. We mount your connectors on cables at economic prices! Please contact our representative for further details of this service.



HUBER + SUHNER LTD. CH-9100 HERISAU

Deutscher Text: siehe Rückseite