

Tools and materials required:

Soldering iron, 70 Watts, 220° to 240°C
Solder Sn/Pb 60/40, 0.6 mm dia.
activated rosin flux
Stanley blade
2 spanners 5,5 mm

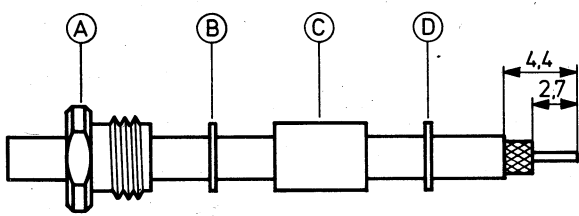
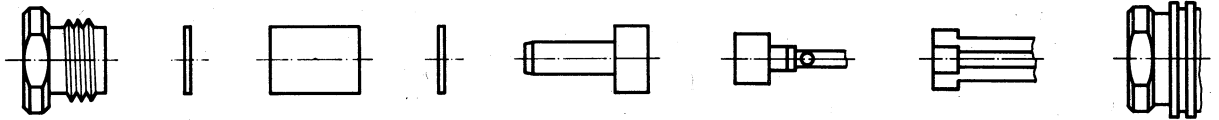
Straight cable connectors for flexible cable

Cable entry: Pressure sleeve

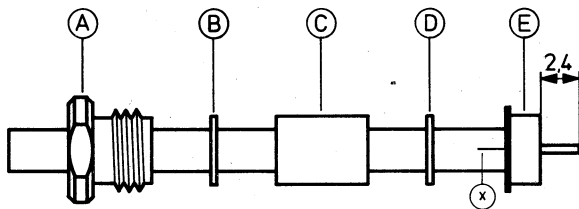
Connector types: (e. g.)

11 QLA-01-1-2c	21 QLA-01-1-2c	24 QLA-01-1-2c
11 QLA-01-1-3c	21 QLA-01-1-3c	24 QLA-01-1-3c
11 QLA-01-2-2c	21 QLA-01-2-2c	24 QLA-01-2-2c
11 QLA-01-2-3c	21 QLA-01-2-3c	24 QLA-01-2-3c

This connector
is supplied
in 8 parts

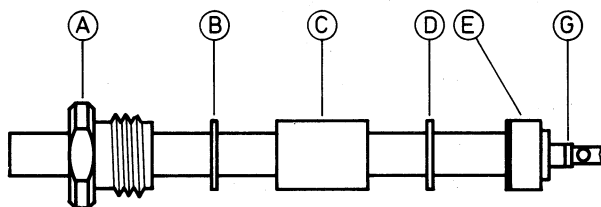


Slide cable entry nut A, washer B, rubber gasket C and washer D onto cable. Prepare cable according to diagram. Do not damage inner conductor and braid.

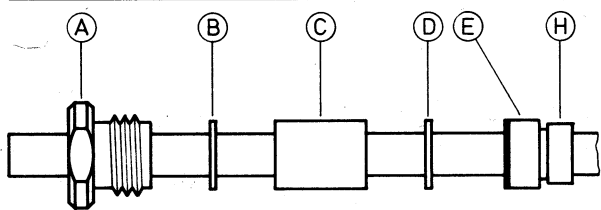


Slide neck of pressure sleeve E underneath the braid until the inner conductor of cable protrudes 2.4 mm. Cut off overlapping braid wires.

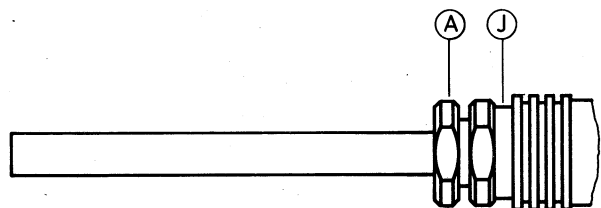
x) Should this operation cause difficulties, cut cable sheat axially over a length of 3 mm.



Lightly tin inner conductor of cable and bore hole of contact pin G using a 70 W soldering iron. Heat contact pin and introduce inner conductor of cable. Remove soldering iron quickly in order to avoid heat damage to cables with PE-dielectric. Surface of contact pin G must remain clean.



Slide insulator H over contact pin G (if not already placed in connector body J).



Push on connector body J. Screw in cable entry nut A and tighten using two 5,5 mm spanners.



SUHNER's skilled staff and specialised equipment are available to carry out complete R.F. lead-assembly on your behalf.
We mount your connectors on cables at economic prices! Please contact our representative for further details of this service.