

I. MATERIALS AND FINISHES:  
 BODY & COUPLING NUT - BRASS, SILVER PLATING  
 CONTACT - BRASS, GOLD PLATING  
 OUTER CONTACT - BeCu, SILVER PLATING  
 INSULATOR - PTFE

2. ELECTRICAL:  
A. IMPEDANCE: 50 OHM

3. PACKAGING:  
A. QUANTITY: SINGLE PACK  
B. MARKING: BAG TO BE MARKED  
"AMPHENOL RF, 82-4450, AND DATE CODE"  
C. CONTACT & FERRULE SHIPPED LOOSE.

4 SHOWS CABLE ENTRY DIMENSIONS.

5. CRIMP WITH AMPHENOL CRIMP TOOL 227-944(M22520/5-01) AND DIE SET 227-1221-25 CAVITY B (M22520/5-25 CLOSURE B).

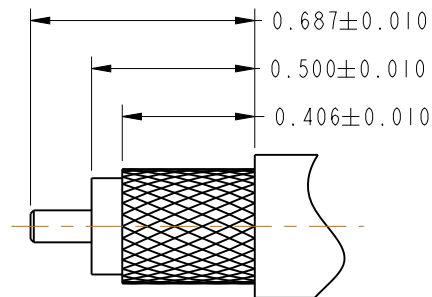
6. CRIMP WITH AMPHENOL CRIMP TOOL 227-944(M22520/5-01) AND DIE SET 227-1221-25 CAVITY A (M22520/5-25 CLOSURE A).

7. MATING FACE DIMENSIONS MUST CONFORM TO MIL-STD-348, SECTION 309.1.

THIRD ANGLE PROJ. 

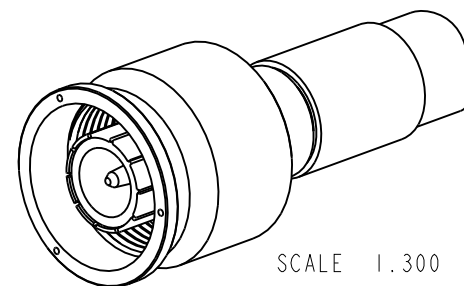
## REVISIONS

REV	DESCRIPTION	DATE	ECO	APPR
--	RELEASE TO MFG.	---	---	---
T	REDRAWN IN PRO E & COD SHEET ADDED	10/1/12	49251	RAK

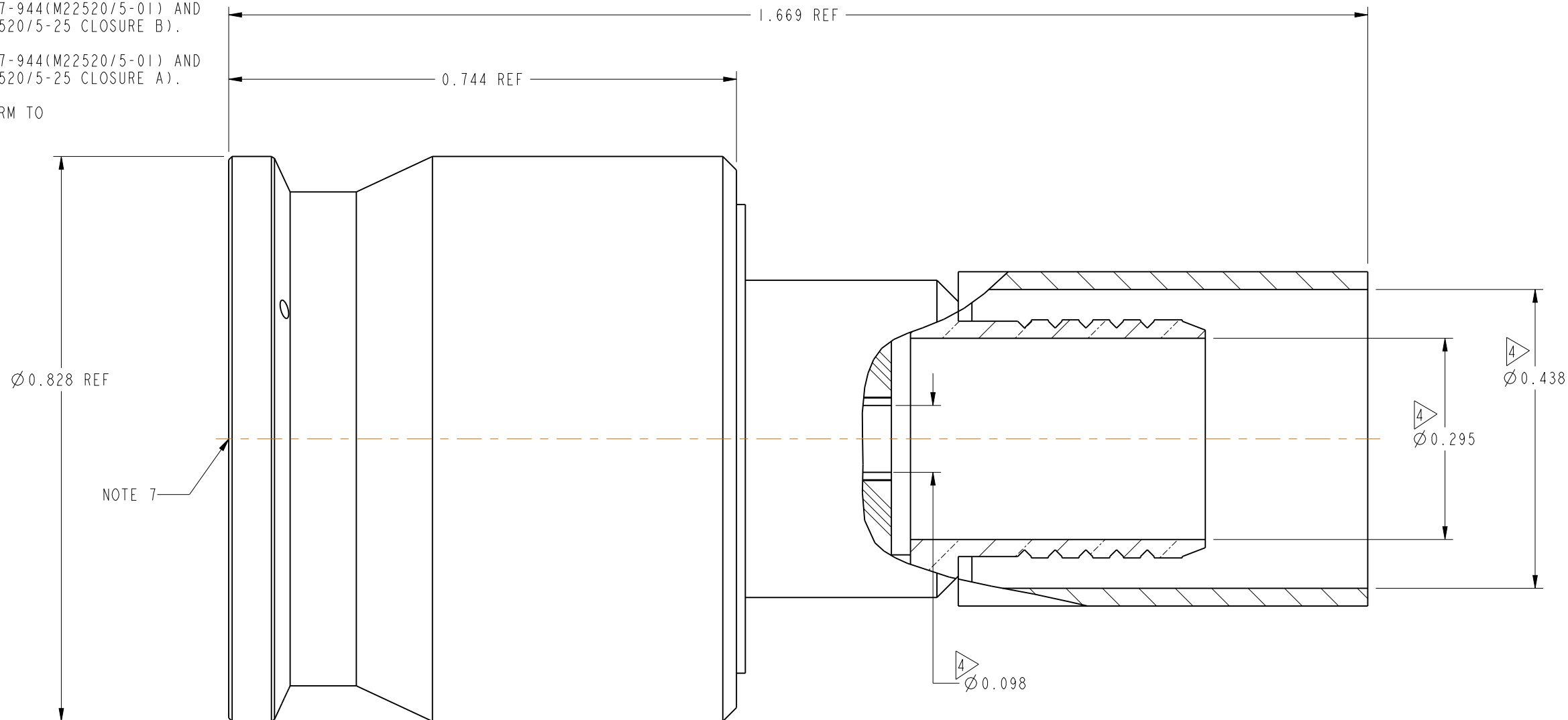


## RECOMMENDED CABLE STRIPPING DIMENSIONS

# MIL-C-39012 INSPECTION



SCALE 1.300



THIS CONNECTOR IS COVERED BY U.S. PATENT 3,439,294 & 3,474,391

## CUSTOMER OUTLINE DRAWING

ALL OTHER SHEETS ARE FOR INTERNAL USE ONLY

UNLESS OTHERWISE SPECIFIED, DIMENSIONS ARE IN INCHES AND TOLERANCES ARE: 2 PLACE DECIMAL      3 PLACE DECIMAL      ANGLES ±.015 (0,381 mm)      ±.005 (0,127 mm)      ± 1°	MATERIAL  SEE NOTES	DRAWN ABHAYA KISHORE	DATE 05-Sep-12	TITLE TYPE SC PLUG, MIL-CRIMP (CATEGORY D) FOR RG-9, 214, 223 & 393/U CABLES		Amphenol RF  www.amphenolrf.com	
ENGINEER K.CAPOZZI		DATE 05-Sep-12					
REFERENCE MIL-C-39012/35-0301		APPROVED K. CAPOZZI	DATE 9/19/12	SCALE: 5.3:1.0	SHEET 2 OF 2	DRAWING NO.82-4450	
CONFIGURATION LEVEL: In Work		CAD FILE		DWG SIZE B	REV T	ITEM NO.82-4450	
FINISH						PART NO.82-4450	