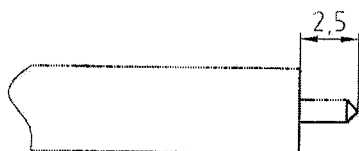
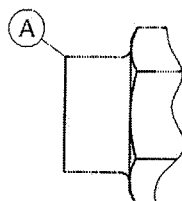


Assembly instruction Series SMA

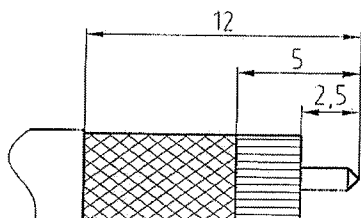
AB	20.06.06
MRO	

No. 150012

Tools and materials required :		Angle plug for flexible cable
Soldering iron 80 to 100 watts		Cable entry : soldered
Solder 220°C Ø 0,8mm		Connector types : (e.g.)
Activated rosin flux		21 SMA-50-2-47
Alcohol, brush, blade (74 Z-0-0-68)		11 SMA-50-3-39
SR cable stripping tool No W157		
Tip trimmer No. W164		
Solder device 74 Z-0-0-442		
Screw 74 Z-0-0-379		
This connector is supplied in 1 part	Suitable cable:	EZ 141; SM 141; MF 141
	Center contact:	Plugged
	Braid:	Soldered

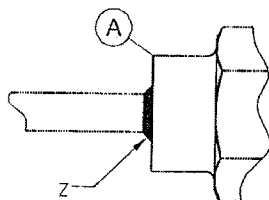


For cable EZ 141 and SM 141
Lightly tin braid according to diagram.
Remove dielectric flush with braid using razor blade.
Form tip of inner conductor to a 90° cone,
using tip trimmer W 164 Check dimension 2,5 mm.



For cable MF 141:
Strip the jacket back 5 mm.
Tin dip the exposed braid. Solder must flow for
a min. of 5 mm, just under the jacket.
Strip jacket again 12 mm.
Strip 2,5 mm of tinned braid and dielectric.

Form tip of inner conductor to a 90° cone.



Slide prepared cable into connector body A until it stops.
locate connector together with cable in screw 74 Z-0-0-379
in solder device 74 Z-0-0-442 and clamp.
Solder cable to connector body A at z.
Cool down and clean with alcohol.

UNCONTROLLED COPY WHEN PRINTED

HUBER + SUHNER's skilled staff and specialised equipment are available to carry out complete RF lead-assembly on your behalf.
We mount your connectors on cables at economic prices! Please contact our representative for further details of this service.



HUBER + SUHNER