

Tools and materials required:

SR cable stripping tool	W 157
Tip trimmer	W 164
C-Grip positioner	W 141
Inserts for W 141 (UT 141)	W 143
(UT 85)	W 145
Torque wrench	W 152

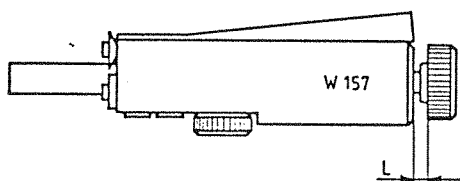
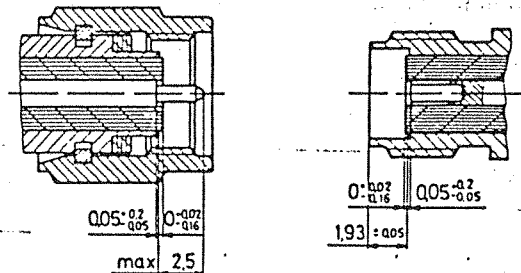
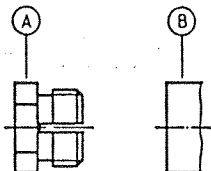
Straight connector for semi-rigid cable

Cable entry: C-Grip

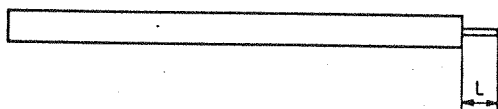
Connector types: (e. g.)

- 11/21/24/25 SMA-50-2-60c
- 11/21/24/25 SMA-50-3-60c

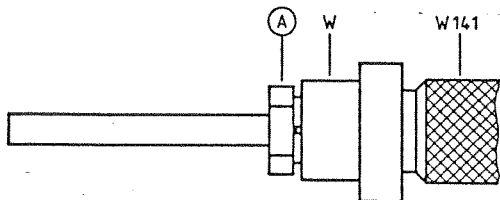
This connector is supplied in 2 parts



Cut cable end perpendicular to cable axis.
Remove copper jacket using cable stripping tool W 157. Set tool to dimension shown in figure. See instruction sheet 9144 for detailed instructions.
Cable UT 85: L = 1,9 mm
Cable UT 141: L = 2,3 mm

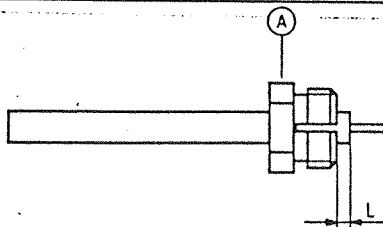


Remove dielectric flush with copper jacket using blade W 68. Check dimension. Trim tip of conductor to a 90° cone using tip-trimmer W 164.
Cable UT 85: L = 1,9 mm
Cable UT 141: L = 2,3 mm

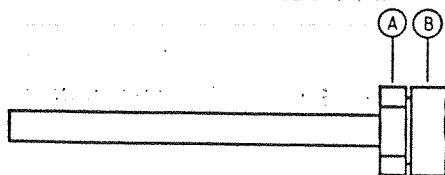


Push C-Grip A onto cable using positioner W 141 and appropriate insert.

Cable typ	W	Typ SMA
UT 141	W 143	e. g. 11 SMA-50-3-60c
UT 85	W 145	e. g. 11 SMA-50-2-60c



Check dimension L = 0,1–0,6 mm.



Screw body B over C-Grip A and tighten fully using torque wrench W 152 (120 Ncm). **IMPORTANT:** C-Grip must not be rotated with respect to the cable jacket.

