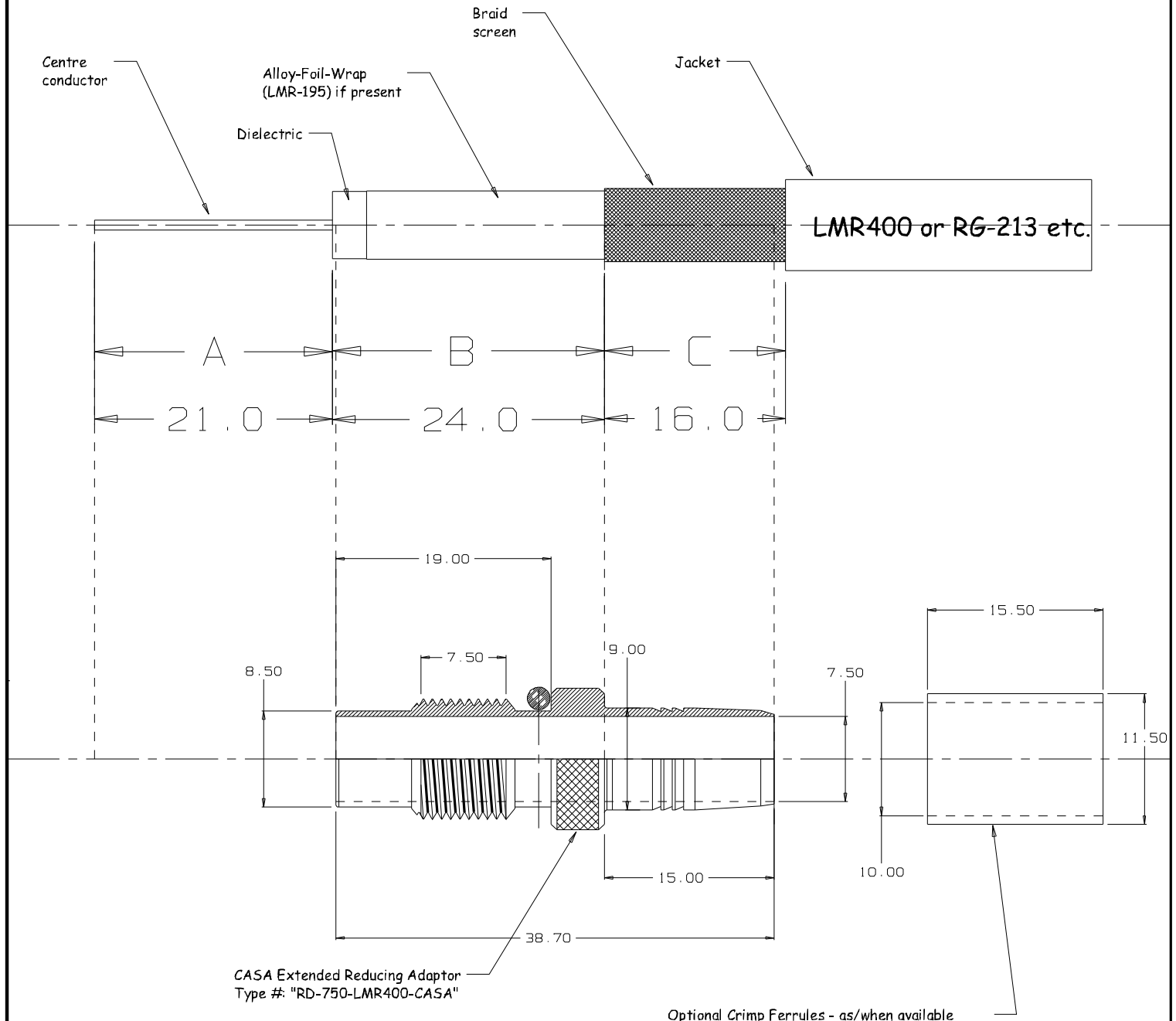


# Cable preparation details for LMR400, RG-213/U, RG-11/U and variants (enquire to CASA for other cable options etc).



Optional Crimp Ferrules - as/when available

CF-124x105X155-CU/NI Crimp Ferrule  
for single-screened LMR400 and variants

use CF-124x115X155-CU/NI ferrule for  
double screened cables \*TBA\* etc.

Crimp-Tool = 76Z-0-7-14 (3.3/10.7mm 3D Violet)  
or 10.7mm HEX AF = 0.421"

Material:  
Body & Ferrule = Brass/Copper Alloy  
Insulator = As supplied with PL259 connector

Finish:  
Body = Silver Plate (as required)  
Pin-Contact = As supplied with PL259 connector  
Ferrule = Nickel Plate

**CASA** Modular Systems  
LOWER HUTT, WELLINGTON, NEW ZEALAND  
TELEPHONE : (64-4) 9393 777  
www.casa.co.nz  
E-MAIL : sales@casa.co.nz

CUSTOMER : **CASA Modular Systems**  
DESCRIPTION : **PL259 Reducing Adaptor for RG-213 or LMR400 etc.**  
DRAWN : **AWD** DATE : 19/03/20 APPROVED : **?** DWG. SCALE : 1:1

SIZE **A4** DRAWING Reference No. **RD-750-RG213** ISSUE **A**  
COPYRIGHT : CASA Modular Systems  
ALL RIGHTS RESERVED

JOB No.  
**XXXX**