



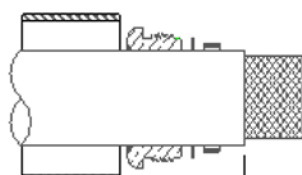
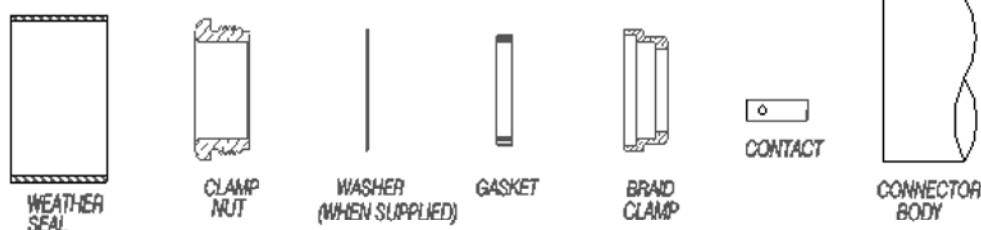
TC-600-NMC (stock code: 3190-357)

Type N-male Plug

solder-on center contact
clamp-on outer contact

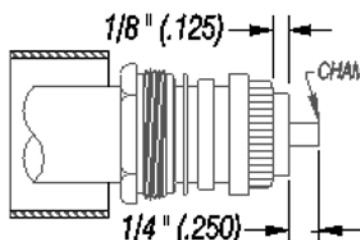
INSTALLATION INSTRUCTIONS

(Cable Types: LMR-600; 600 DB 600 FR; 600 ULTRAFLEX; 600 LLPL)

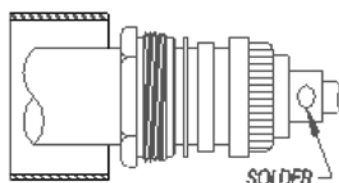


9/16" (.562)

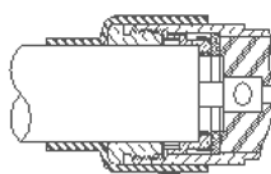
STEP 1



STEP 2



STEP 3



STEP 4

WEATHER SEAL

1. (A) Slide weather seal, clamp nut, washer and gasket onto cable. Cut jacket to dimensions shown. Be sure v-groove faces away from nut as shown.
2. (A) Slide braid clamp over braid. Being certain that clamp seats squarely against cut end of jacket.
(B) Form braid wires smoothly over clamp as shown and trim off excess wire even with shoulder.
(C) Cut conductor and dielectric to dimensions shown.
(D) Remove any residual plastic from center conductor.
(E) Deburr center conductor using a fine file or Times DBT-01 tool.
3. (A) Seat center contact firmly against cable dielectric and solder to cable conductor. Use minimal heat to minimize melting of foam dielectric. Remove any excess solder from contact surface.
4. (A) Insert assembly into connector body being certain braid clamp is seated. Tighten clamp nut to 60-65 lbs.-ins. torque.
(B) Heat shrink weather seal over rear of connector body and down over cable jacket using a hot air gun.