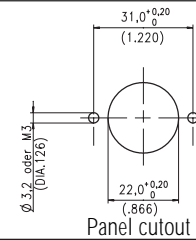


## C 16-1

### Female receptacles



| Description   | Drawing | No. of cont. | Part. no.  |
|---|---------|--------------|------------|
| Female receptacle, screw termination, VDE test certificate of conformity                              |         | 3 + PE       | T 3111 000 |
| Female receptacle, solder termination, VDE test certificate of conformity                             |         | 6 + PE       | T 3107 000 |
| Female receptacle, crimp version, without contacts <sup>1)</sup> , VDE test certificate of conformity |         | 6 + PE       | T 3107 500 |

<sup>1)</sup> Please order crimp contacts separately, see page 30/31, part numbers system for crimp contacts see page 32.

<sup>2)</sup> Mounting hole without chamfer, suitable sealing for screws is necessary.