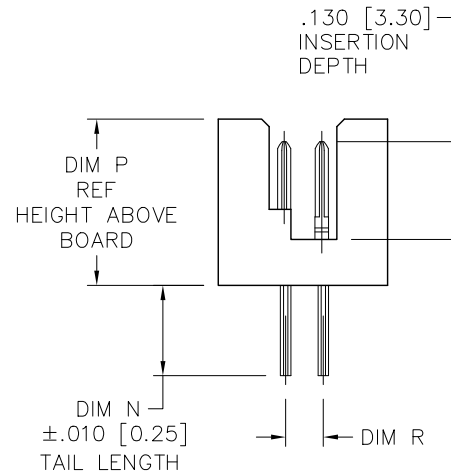
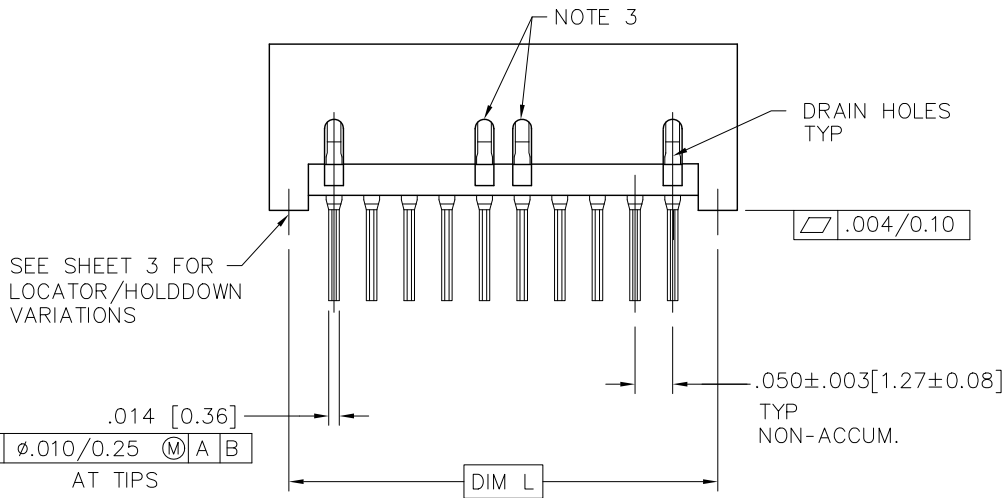
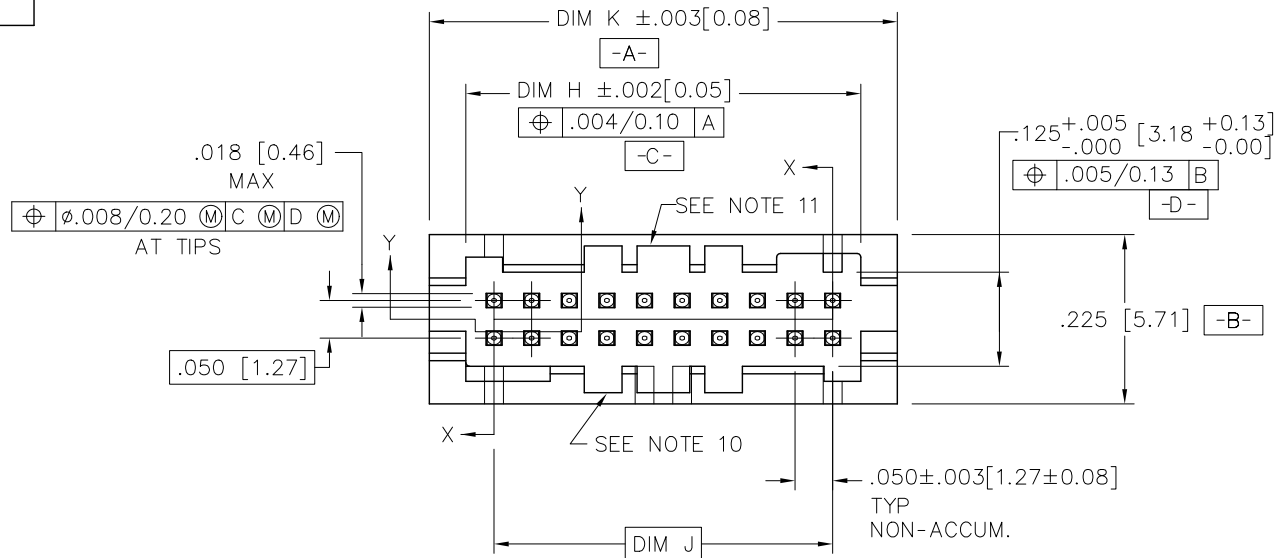


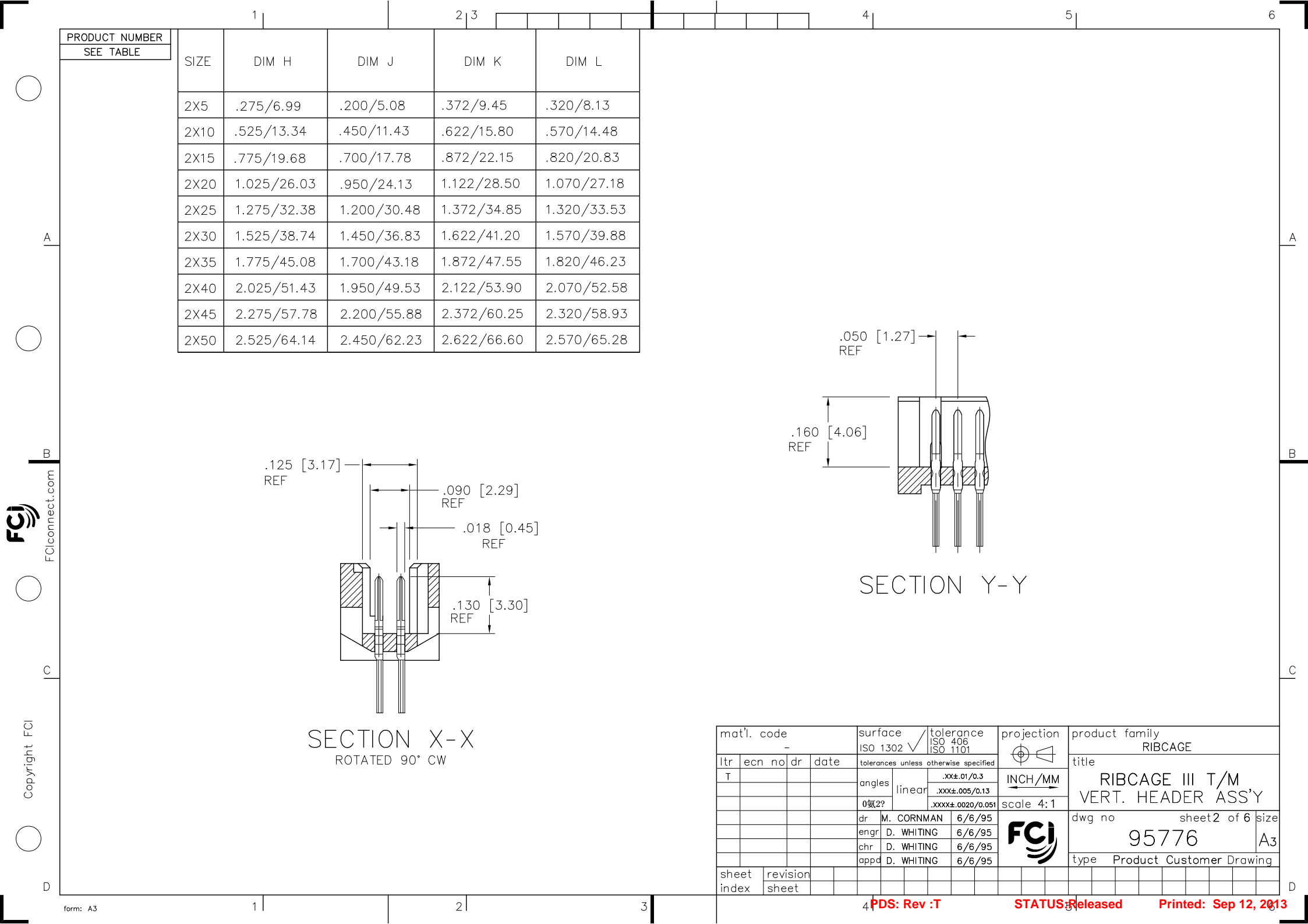


PRODUCT NUMBER  
SEE TABLE



mat'l. code -				surface ISO 1302 ✓		tolerance ISO 406 ISO 1101		projection 		product family RIBCAGE										
ltr	ecn no	dr	date	tolerances unless otherwise specified						INCH/MM	title									
L	J10329	CRG	6/6/01	angles		linear		.XX±.01/0.3			RIBCAGE III T/M									
M	M05-0123	MHT	6/6/05	.XXX±.005/0.13						scale 4:1	VERT. HEADER ASS'Y									
N	M06-0225	ERE	06/12/06	0±2° .XXXX±.0020/0.051																
P	M06-0370	MHT	9/26/06	dr	M. CORNMAN		6/6/95			dwg no				sheet 1 of 6				size		
R	M09-0058	MHT	4/04/09	engr	D. WHITING		6/6/95			95776				A3						
S	N10-0122	YO	5/10/10	chr	D. WHITING		6/6/95													
T	ELX-N-009749	YO	1/31/12	appd	D. WHITING		6/6/95													
sheet	revision		T	T	T	T	T	T												
index	sheet		1	2	3	4	5	6												



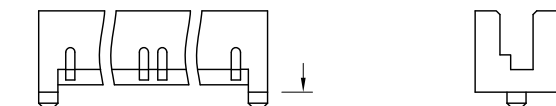
PRODUCT NUMBER  
SEE TABLE

# LOCATOR/HOLDDOWN VARIATIONS

STYLE  
1

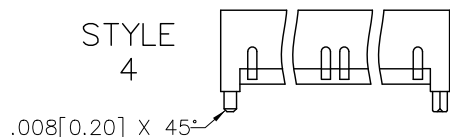


STYLE  
2



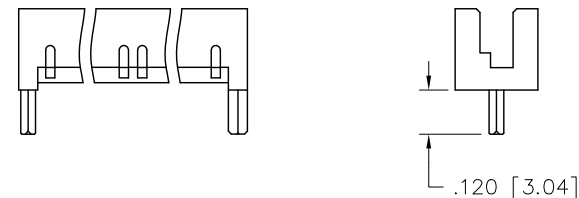
$\phi .0520 [1.321]$   
 $\phi .004/0.10 \text{ (M)} \text{ A B}$  (ALL PEG CONFIGURATIONS)  
 $.040 [1.02]$

STYLE  
4



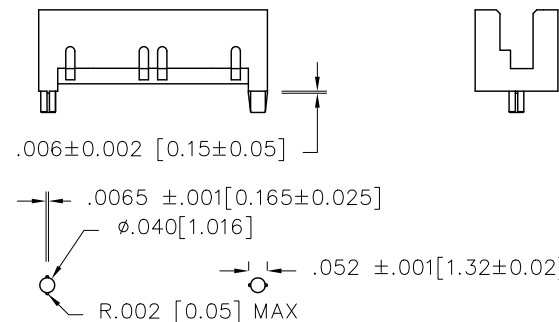
$.008 [0.20] \times 45^\circ$   
 $\phi .034 \pm .001 [0.86 \pm 0.03]$   
 $.0520^{+.0005}_{-.0010} [1.321^{+0.013}_{-0.025}]$   
 $.0030 [0.076]$   
 $.040^{+.001}_{-.002} [1.02^{+0.03}_{-0.05}]$   
 $.008 \pm .003 [0.20 \pm 0.08]$

STYLE  
6



$.0520^{+.0005}_{-.0010} [1.321^{+0.013}_{-0.025}]$   
 $.040^{+.001}_{-.002} [1.02^{+0.03}_{-0.05}]$   
 $.0520^{+.0005}_{-.0010} [1.321^{+0.013}_{-0.025}]$   
 $.040^{+.001}_{-.002} [1.02^{+0.03}_{-0.05}]$

STYLE  
7

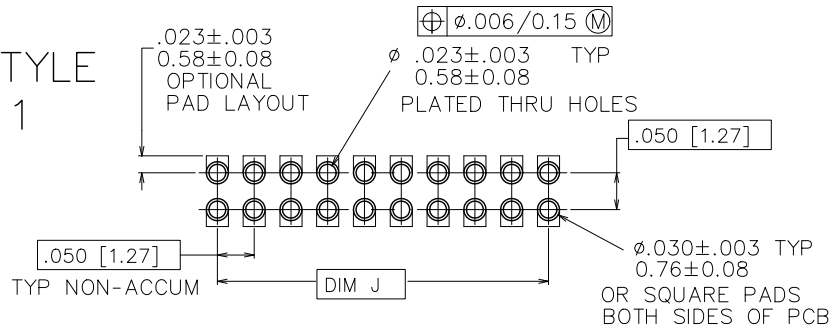


mat'l. code -				surface ISO 1302 <input checked="" type="checkbox"/>	tolerance ISO 406 ISO 1101	projection 	product family RIBCAGE		
ltr	ecn	no	dr	date	tolerances unless otherwise specified		title		
T					angles	linear	RIBCAGE III T/M		
					0.002		VERT. HEADER ASS'Y		
					dr	M. CORNMAN	6/6/95	dwg no	sheet 3 of 6
					enr	D. WHITING	6/6/95	95776	size A3
					chr	D. WHITING	6/6/95	type Product Customer Drawing	
					appd	D. WHITING	6/6/95		
sheet index	revision sheet								

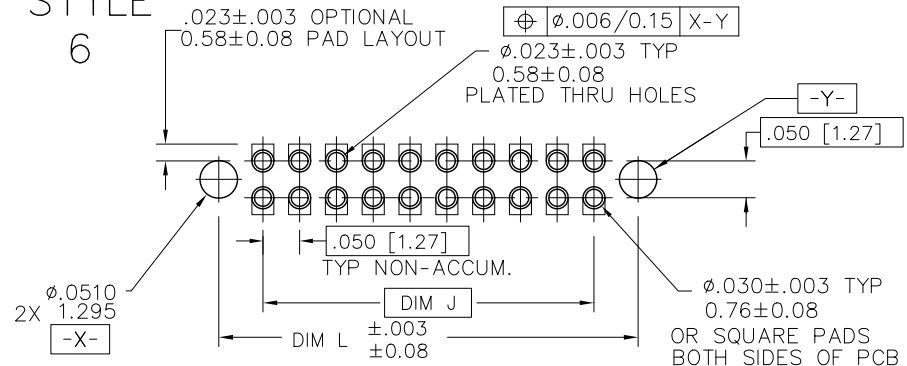
PRODUCT NUMBER  
SEE TABLE

# RECOMMENDED P. C. B. LAYOUT

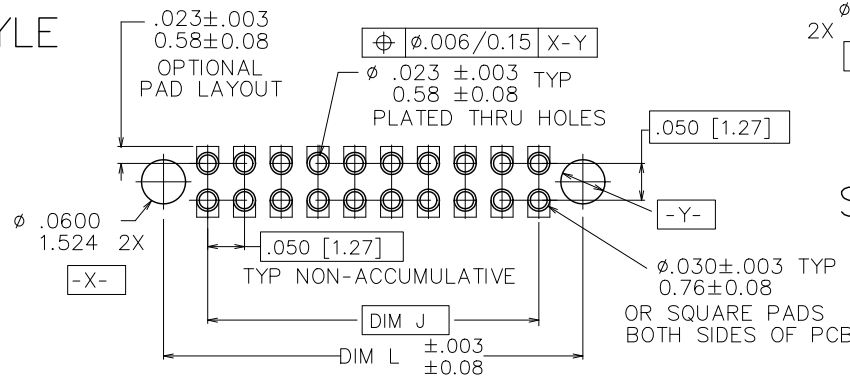
STYLE  
1



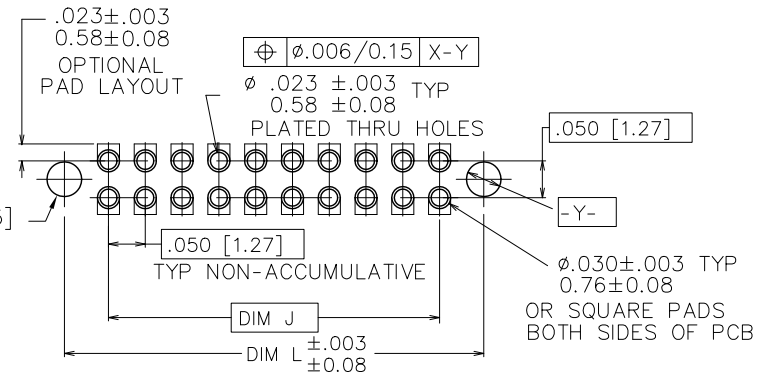
STYLE  
6



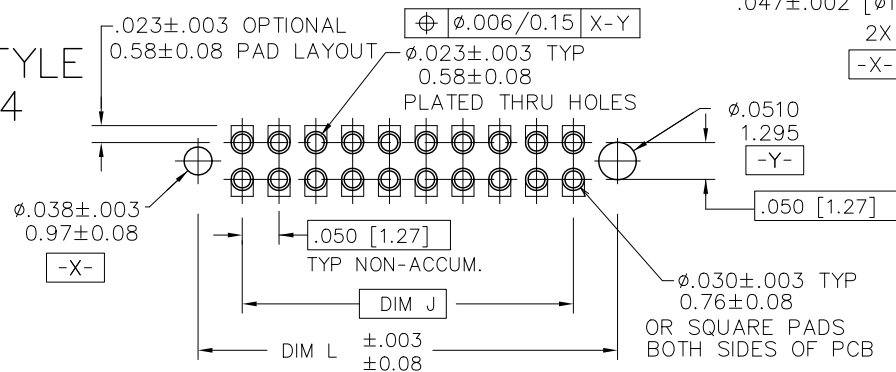
STYLE  
2



STYLE  
7



STYLE  
4

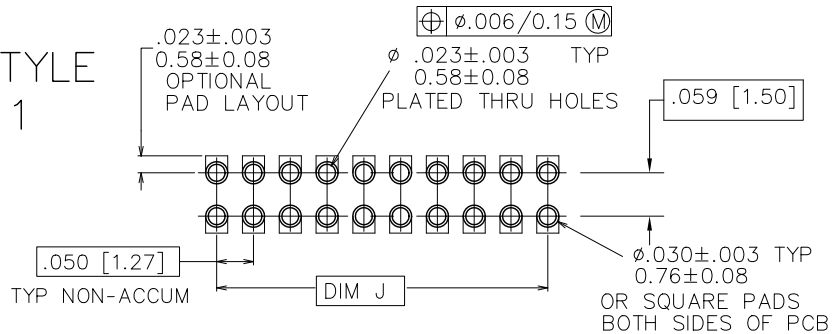


mat'l. code -				surface ISO 1302 ✓	tolerance ISO 406 ISO 1101	projection ISO 406 ISO 1101	product family RIBCAGE			
ltr	ecn	no	dr	date	tolerances unless otherwise specified		title		RIBCAGE III T/M VERT. HEADER ASS'Y	
T					angles	linear	INCH/MM		sheet 4 of 6	
					0.001	0.001	scale 4:1		size	
					dr	M. CORNMAN	6/6/95	dwg no		A3
					enr	D. WHITING	6/6/95	95776		
					chr	D. WHITING	6/6/95	type		
					appd	D. WHITING	6/6/95	Product Customer Drawing		
sheet	revision									
index	sheet									

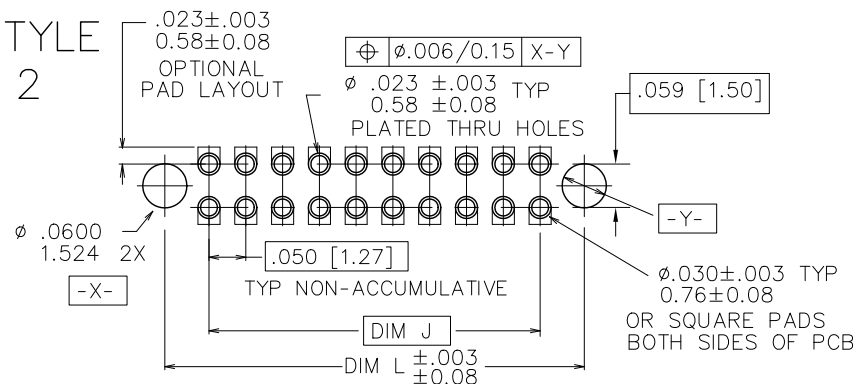
PRODUCT NUMBER  
SEE TABLE

# RECOMMENDED P. C. B. LAYOUT

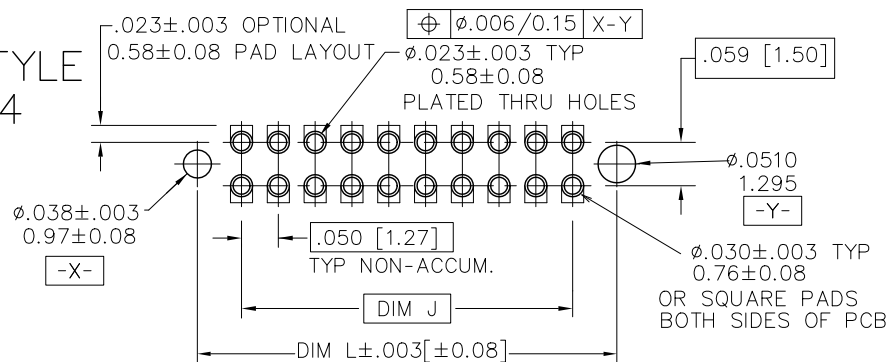
STYLE  
1



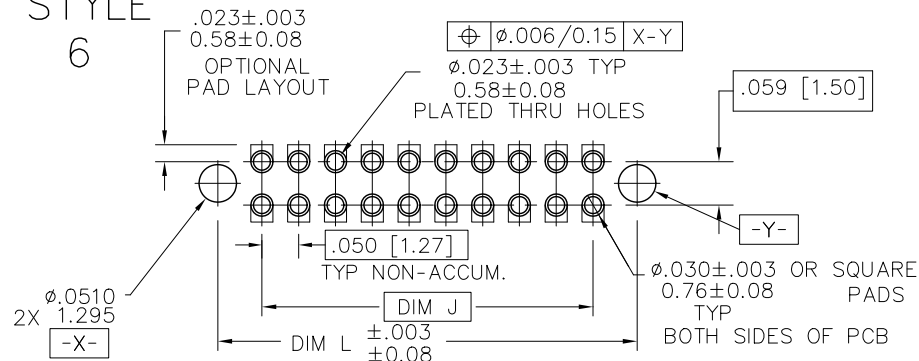
STYLE  
2

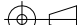



STYLE  
4



STYLE  
6



mat'l. code -				surface ISO 1302 ✓		tolerance ISO 406 ISO 1101		projection 		product family RIBCAGE			
ltr	ecn	no	dr	date		tolerances unless otherwise specified				title			
T						angles		linear	.XX±.01/0.3	INCH/MM		RIBCAGE III T/M	
						0.002?			.XXX±.005/0.13			VERT. HEADER ASS'Y	
									.XXXX±.0020/0.051	scale 4:1			
				dr	M. CORNMAN	6/6/95				dwg no		sheet5 of 6	size
				engr	D. WHITING	6/6/95				95776		A3	
				chr	D. WHITING	6/6/95							
				appd	D. WHITING	6/6/95							
sheet index		revision sheet											



# Mouser Electronics

Authorized Distributor

Click to View Pricing, Inventory, Delivery & Lifecycle Information:

[FCI / Amphenol:](#)

[87405-110](#) [87410-150](#) [72449-140LF](#)