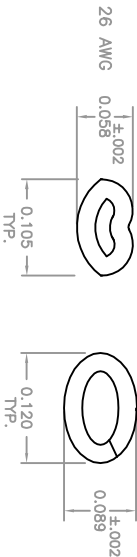
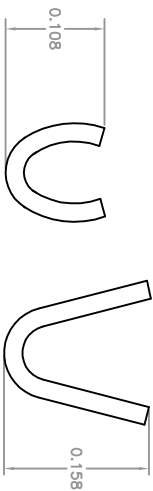
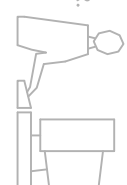
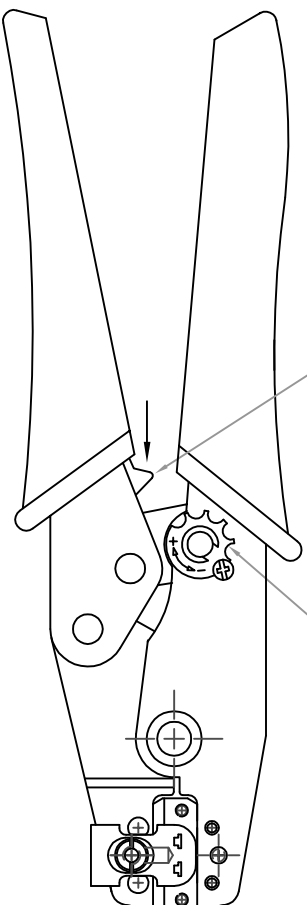


CONDUCTOR CRIMP
FORM

INSULATOR CRIMP
FORM



TO OPEN PARTIALLY CLOSED TOOL
PUSH THIS LATCH IN THE DIRECTION
OF THE ARROW.

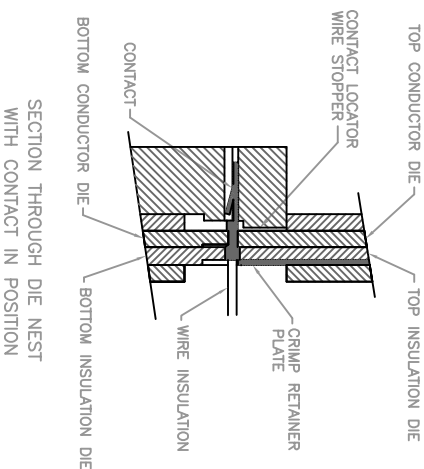


THIS IS A C.A.D. GENERATED DRAWING
DO NOT MAKE MANUAL REVISIONS TO MASTER.

ISSUE NUMBER

ORIGINAL

1

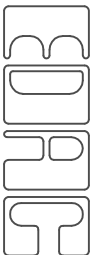


NOTES:

- 1- THIS HAND TOOL IS DESIGNED FOR CRIMPING 18 TO 26 AWG WIRES TO EDAC CONTACT P/N 516-290-590.
- 2- RISK OF ELECTRIC SHOCK- DO NOT USE THIS ON LIVE WIRE.
- 3- CRIMPING INSTRUCTIONS:
 - OPEN THE TOOL, PLACE THE CONTACT INTO THE CORRECT DIE NEST.
 - PARTIALLY CLOSE THE TOOL UNTIL THE CONTACT IS HELD IN PLACE. INSERT THE WIRE INTO THE CONTACT.
 - CLOSE THE TOOL UNTIL THE RATCHET RELEASES. REMOVE THE CRIMPED CONTACT.
- 4- ADJUSTMENT OF CRIMP FORCE (WHEN NECESSARY):
 - LOOSEN THE SCREW
 - ADJUST THE STAR-WHEEL BY TURNING FROM (-) TO(+).
 - CHECK THE PRELOAD AND THE CRIMP FORCE.

TOOL PART NUMBER: 516-280-201

516 SERIES HAND CRIMP TOOL INSTRUCTIONS



EDAC INC
TORONTO, ONTARIO
CANADA

YOUR CONNECTION TO QUALITY & SERVICE

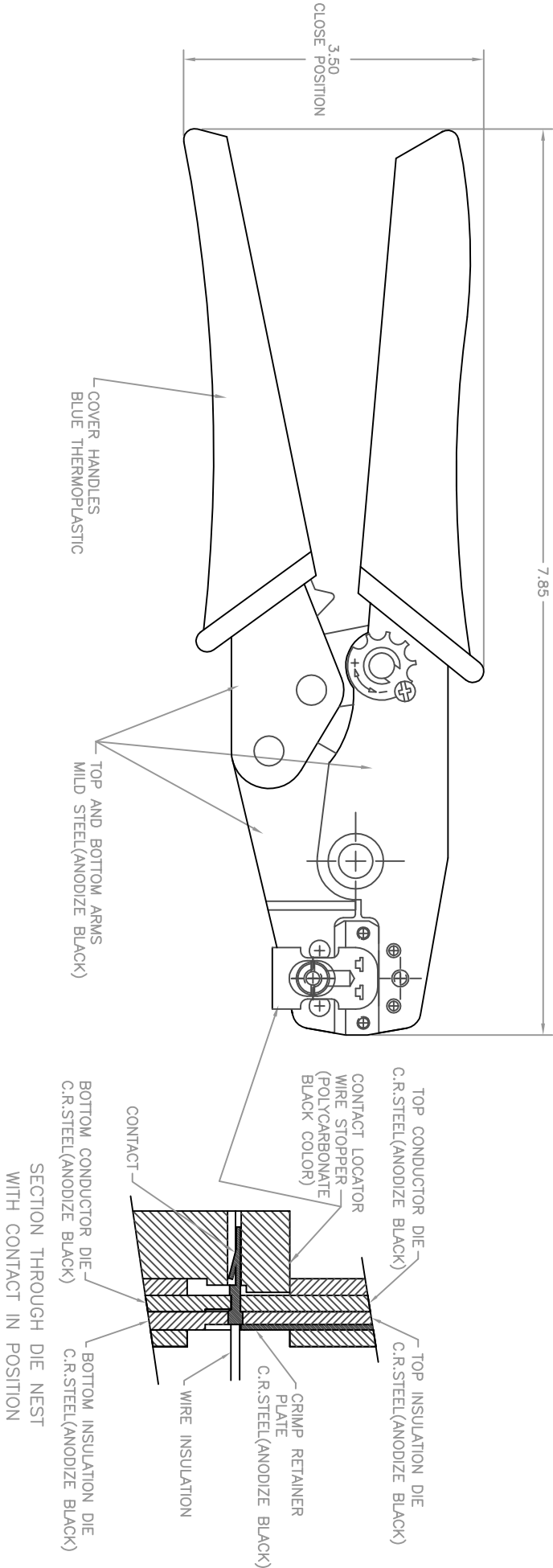
THESE DRAWINGS AND SPECIFICATIONS
ARE THE PROPERTY OF EDAC INC. AND
SHALL NOT BE REPRODUCED, OR COPIED
OR USED AS THE BASIS FOR THE
MANUFACTURE OR SALE OF APPARATUS
WITHOUT WRITTEN PERMISSION.

SCALE: N.T.S.
DRAWING NUMBER

516-280-201


SHEET 1 OF 2
ISSUE 1

ACAD REFERENCE NO. 51628211
DRAWN: F.BRIONES
CHECKED: DATE: DEC.8/97



TOOL PART NUMBER: 516-280-201

516 SERIES HAND CRIMP TOOL			
ACAD REFERENCE NO. 51628211		DRAWN: DATE: FEB.20/01	
CHECKED:		DATE:	
SCALE: N.T.S.		SHEET 2 OF 2	
DRAWING NUMBER		ISSUE	
516-280-201		1	



EDAC INC
TORONTO, ONTARIO
CANADA

YOUR CONNECTION TO QUALITY & SERVICE

THESE DRAWINGS AND SPECIFICATIONS
ARE THE PROPERTY OF EDAC INC.,AND
SHALL NOT BE REPRODUCED,OR COPIED
OR USED AS THE BASIS FOR THE
MANUFACTURE OR SALE OF APPARATUS
WITHOUT WRITTEN PERMISSION.