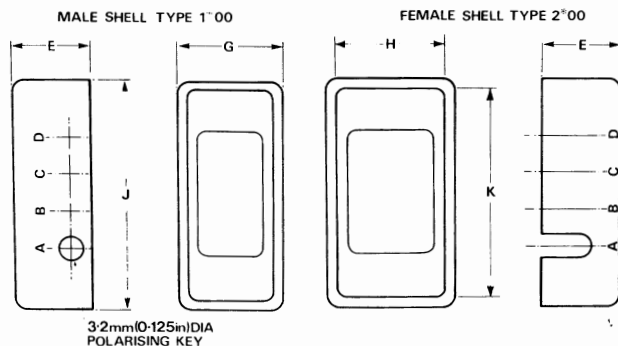




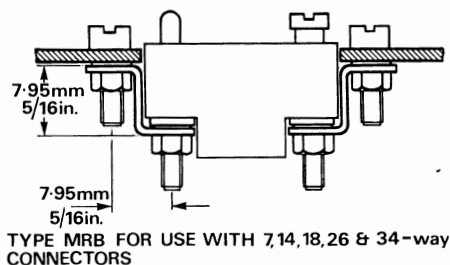
Shells

Shells give protection against mechanical damage to the plastic moulding, help to exclude dust and other foreign matter from the contact areas, and in most cases provide additional polarizing facilities. Specify polarization reference A, B, C, or D as required.



Chassis mounting brackets

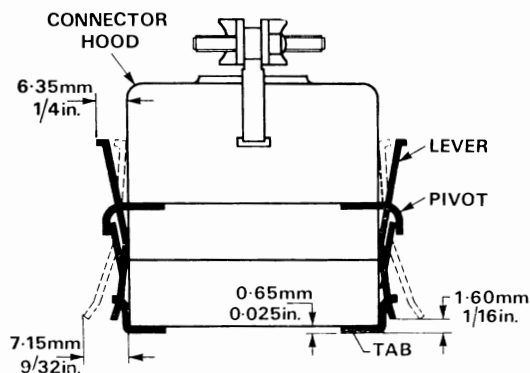
These provide a simple method of mounting any MRE/A plug or socket unit on a chassis so that its mating face is flush with the surface of the chassis.



Fits Connector	E	G	H	J	K
7 way in mm	0.625 15.88	0.500 12.7	0.520 13.21	1.343 34.13	1.363 34.62
14 way in mm	0.625 15.88	0.560 14.22	0.580 14.73	1.370 34.80	1.390 35.31
18 way in mm	0.625 15.88	0.687 17.45	0.707 17.96	1.437 36.50	1.452 36.88
26 way in mm	0.625 15.88	0.687 17.45	0.707 17.96	1.750 44.45	1.770 44.96
34 way in mm	0.625 15.88	0.870 22.10	0.890 22.60	2.120 53.85	2.135 54.23
50 way in mm	0.625 15.88	1.000 25.4	1.020 25.91	2.843 72.23	2.863 72.72
75 way in mm	0.734 18.64	1.359 34.52	1.468 37.29	2.843 72.21	2.953 75.00
104 way in mm	0.727 18.47	1.755 44.58	1.765 44.83	2.974 75.54	2.985 75.82

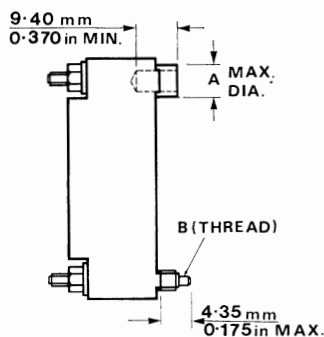
Vibration locks

Vibration locks prevent accidental disconnection of mated connectors. They lock automatically when the plug and socket are engaged, and can only be unlocked by depression of the lever arms. A complete unit comprises two lever and pivot assemblies (VL) and two lock-tabs (V). The former are installed on the cable-mounted half of the connector (usually with a hood), and the latter on the mating connector. The lever and pivot assemblies, or the lock-tabs, can be fitted to a plug or socket, as required. Outstanding features of vibration locks are: simplicity of design, ease of assembly, complete locking effectiveness. Vibration locks cannot be used with side-entry hoods or shells.

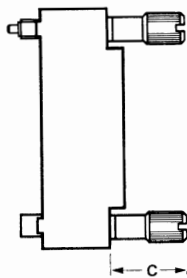


**Jackscrews**

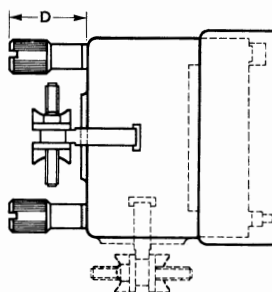
Jackscrew locking devices provide a positive method of mating and locking together two halves of a connector. They prevent accidental disconnection due to vibration or physical shock, and simplify the engagement and disengagement of connectors in confined locations. Jackscrews are manufactured from stainless steel and nickel-plated brass and are available as fixed or turnable types. The turnable types have nickel-plated brass and anodised aluminium knobs.



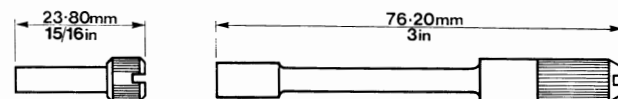
Fixed jackscrews type J2 fitted to socket



Turntable jackscrews type JT2 fitted to plug



Long turntable jackscrews type JTC2 fitted to plug with hood and shell

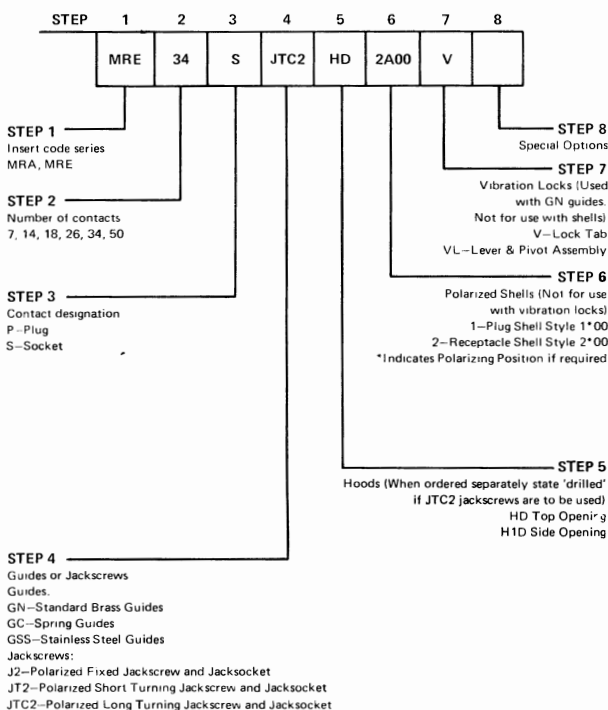


Short and Long turnable jackscrews for MRAC 104 only

Fits connector	A	B	C	D
14 to 75 in	0.195	6-32 UNC 2A	1 1/2	2 1/2
way mm	4.85		26.19	12.7
104 in	0.221	8-32 UNC 2A	3/4	1 1/2
way mm	5.61		24.61	19.05

Ordering information for MRE Mk 2

Specify complete plug or receptacle by following Steps 1 through 8. Omit steps not required. If accessories only are required, omit Step 3 but include Steps 1, 2 and those relating to the particular accessories required.

**Ordering information for MRAC**
Contacts must be ordered separately