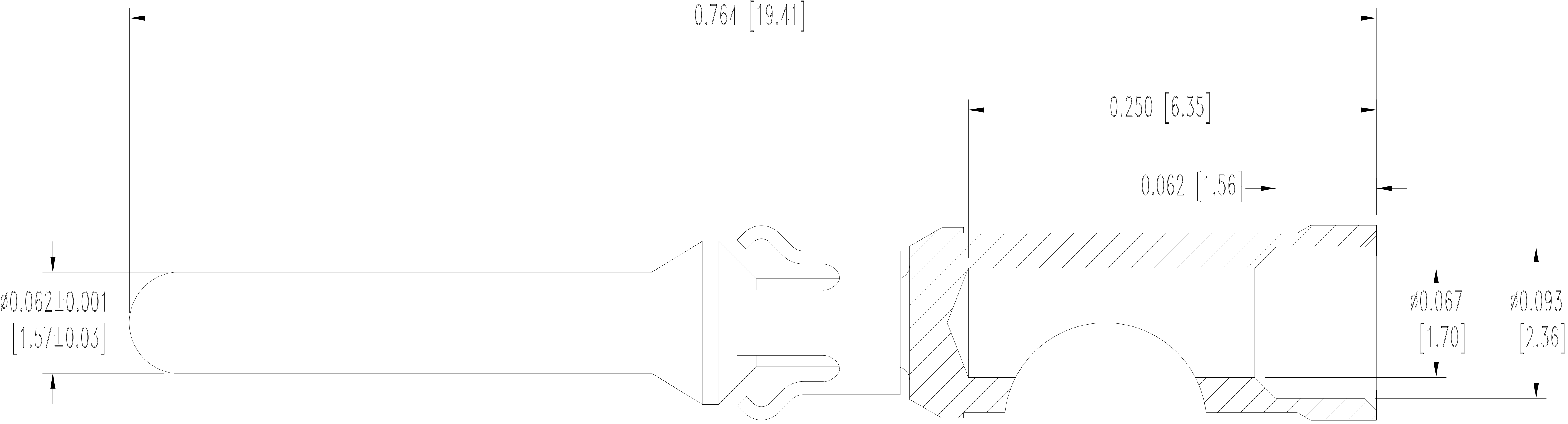


THIS DRAWING CONTAINS INFORMATION PROPRIETARY TO POSITRONIC AND IT'S SUBSIDIARIES. POSITRONIC BELIEVES THE DATA ON THIS DRAWING TO BE RELIABLE, SINCE THE TECHNICAL INFORMATION IS GIVEN FREE OF CHARGE, THE USER EMPLOYS SUCH INFORMATION AT HIS OWN DISCRETION AND RISK. POSITRONIC ASSUMES NO RESPONSIBILITY FOR RESULTS OBTAINED OR DAMAGES INCURRED FROM USE OF SUCH INFORMATION IN WHOLE OR IN PART.

DATE	REV	REVISION RECORD		APP	DR	CK
08-19 19	A	ECO	68966	RK	SA	AB

SK15108



NOTES:

- MATERIALS AND FINISHES:
CONTACTS: COPPER ALLOY, GOLD FLASH OVER NICKEL PLATE.
RETAINER: BERYLLIUM COPPER, NICKEL PLATE.
- DETAILED PRODUCT, MECHANICAL AND ELECTRICAL INFORMATION IS AVAILABLE IN THE LATEST STANDARD DENSITY RECTANGULAR PRODUCT PUBLICATION AT CONNECTPOSITRONIC.COM.
- DIMENSIONS ARE IN INCHES [MILLIMETERS].



POSITRONIC
INDUSTRIES INC.
SPRINGFIELD, MISSOURI 65801

DECIMAL TOL.
± 0.015 [0.38]

ANGULAR TOL.
± 5°

GMCT/PCS SERIES

TITLE
MS116N

DATE
5-16-13

SCALE
N.T.S.

DRAWING NUMBER
SK15108

DRAWN BY
MP

APPROVED BY
COLE

REV.
A