

CASA Heatsink Kitset for Panel/Surface mounting or DIN-35 rail fixing of Solid-State-Relays.

Panel-Fixing kitset comprises:

- 2 x M4x14mm fixing screws for SSR
- 1 x HS-4058-80-SSR heatink with 4 extra M4 holes.
- 1 x 100x100mm acrylic back-plate
- 4 x 30x9mm M4 spacers
- 4 x M4 x 40mm CSK screws
- 1 x pack of thermal-compound (grease)

Options may Include:

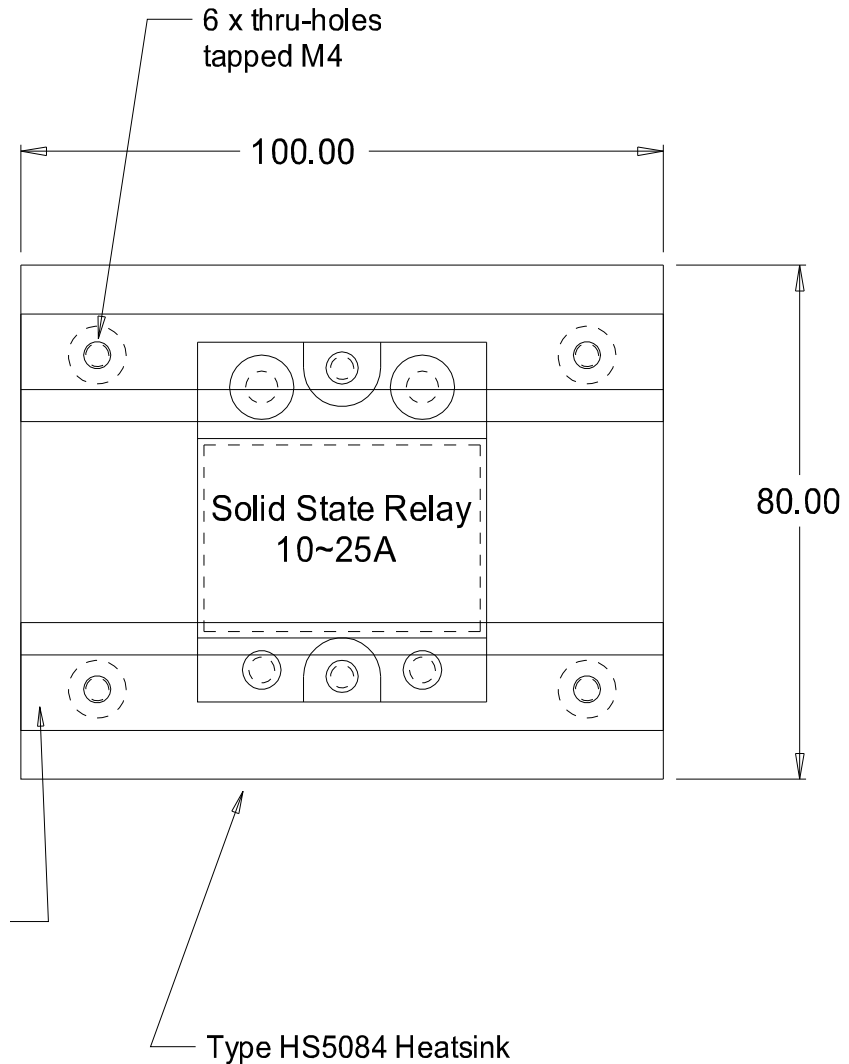
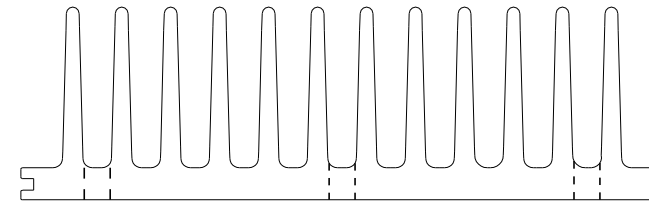
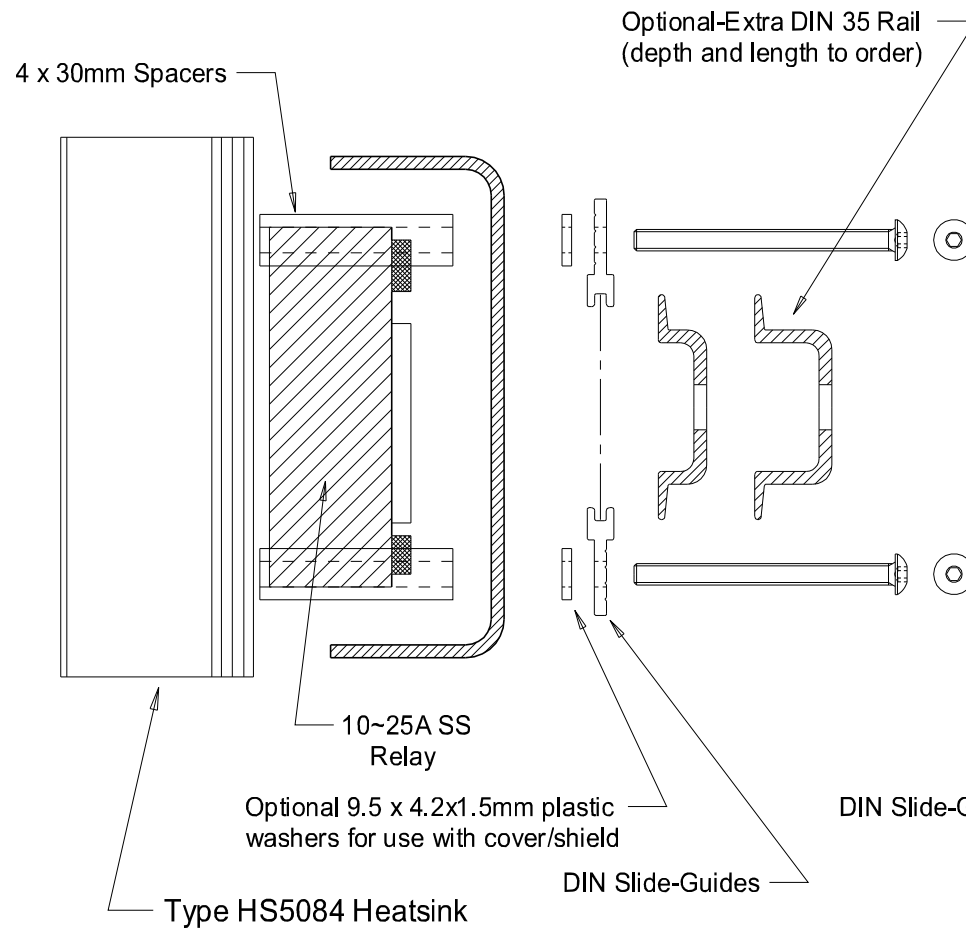
- 1 x Solid-State Relay (of customer specified rating)
- 1 x Additional Shield-Plate to guard the HV terminals of the relay.

DIN TS35 Fixing kitset comprises:

- 2 x M4x12mm fixing screws for SSR
- 1 x HS-4058-80-SSR heatink with 4 extra M4 holes.
- 2 x Slotted aluminium DIN-rail guide-plates
- 4 x 30x9mm M4 spacers
- 4 x M4 x 40mm pan-head screws
- 1 x pack of thermal-compound (grease)

Options may Include:

- 1 x Solid-State Relay (of customer specified rating)
- 1 x Acrylic shield plate
- 4 x 10mm OD x 1.6mm M4 flat washers (if optional plastic cover is to be fitted)
- 1 x TS35x7.5mm DIN rail (of customer specified length)



MATERIAL
Acrylic
ALLOY
3~4mm
EST. AREA
265 mm
EST. WEIGHT
2.80 kg/m
EST. PERIPHERY
EXT: 354 mm
TOT: 354 mm
TOLERANCE
0.00mm ±0.1mm
00.0mm ±0.25mm
0000mm ±0.5mm
0~600mm ±0.1mm
> 600mm ±0.5mm
BS1474:1987
APPLIES UNLESS OTHERWISE SPECIFIED
JOB No.
3000

Note - a top-mounted cooling fan adaptor is also available.
The fan is chosen to suit the available supply voltages etc.
<http://www.casa.co.nz/motors/fans/>

<div>CASA</div> Modular Systems		CUSTOMER : CASA Modular Systems				SIZE	DRAWING Reference No.	ISSUE
Petone 5012, WELLINGTON, NEW ZEALAND TELEPHONE : (64-4) 9393 777 WWW Address: www.casa.co.nz		DESCRIPTION : Heatsink Plate + DIN Kit for Solid-State Relay HS				A4	HS5084-80-SSR-Kits	A
		DRAWN : AWD	DATE : 16/05/25	APPROVED : ?	DWG. SCALE : 1:1			
						©	COPYRIGHT : CASA Modular Systems ALL RIGHTS RESERVED	