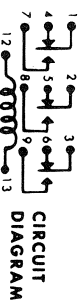
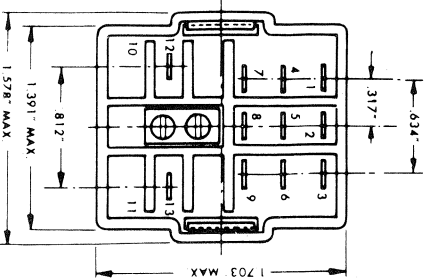
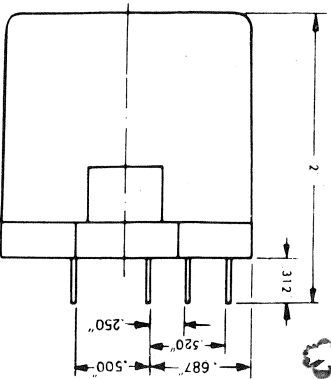
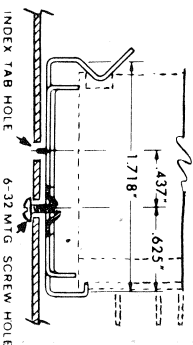
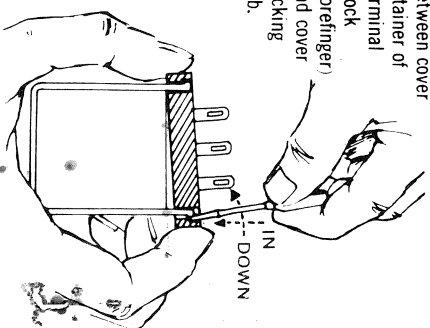


GUARDIAN[®] ELECTRIC SERIES 1220 AC-1225 DC RELAY



TO REMOVE COVER—Grasp unit as illustrated. Apply light inward and downward pressure between cover retainer of terminal block (forefinger) and cover locking tab.



**ABOVE CHASSIS
RELAY MOUNTING
AS SUPPLIED**

FIG. C

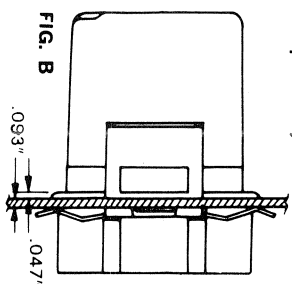
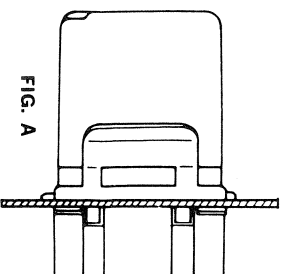
For Series 1220/1225 Relay

Bracket 127-200431-01

Guardian Series 1220 AC—1225 DC relay can be used with or without plug-in socket. Socket part number (*SEE REVERSE SIDE*). (Distributor P/N 1220 SOC.) Relay terminal connections may be soldered type or "110 series" quick connects, see back page for some of the types available.

SOCKET AND RELAY MOUNTING OPTIONS

(Desired mounting option must be specified)



A. "Thru Chassis" mounting **PREFERRED** for easy FRONT side of the chassis assembly and disassembly. (See back page.) Order IR-1220 SOC-1.

B. Permanent type of "Thru Chassis" mounting using a one piece socket mounting clip. Order IR-1220 SOC-2.

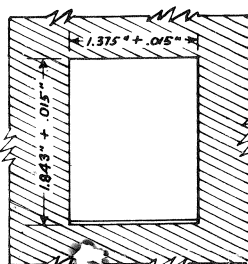
C. Above chassis—snap bracket mounted —for quick connects or soldering as supplied with relay.

IMPORTANT—SEE OPPOSITE SIDE FOR PREFERRED MOUNTING OPTION

SOCKET INFORMATION FOR SERIES 1220 RELAY

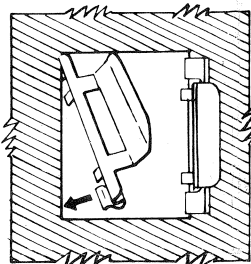
THRU CHASSIS INSTALLATION CLIPS (P/N 141-200004-00)

FIG. 1 Chassis



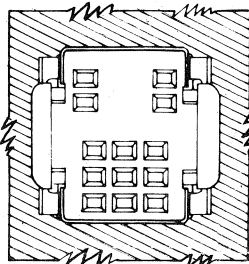
(a) Chassis thickness may vary from .050" minimum to .093" maximum. (b) Cut out rectangular hole in chassis to dimension indicated.

FIG. 2



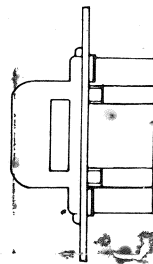
Press mounting clips (P/N 141-200004-00) into positions shown.

FIG. 3



Press socket from the top into the position shown. Lock-in ears on the clip will snap into retaining notch in socket and lock the socket into place.

FIG. 3A



Shows socket in final position with retaining ears in locked position.

FIG. 4



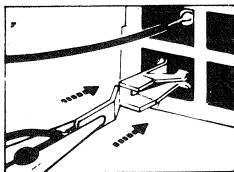
Socket contacts (P/N 015-000235-01) will accept up to #18 stranded wire for soldering type connections or will accept size .110" quick connects. Quick connects must mate with .016" thick male tab.

"110" SERIES QUICK CONNECTS

FOR .016 MALE TAB ON RELAY OR SOCKET CONTACTS

	Terminal No.	Wire Size	
AMP FASTON	42415-1	24-22	Insulation Support
	60118-1	22-18	Insulation Support
	42398-1	20-18	NON-Insulation Support
MALCO TABON	51A110-2	20-24	Insulation Support
	51A115-2	20-24	NON-Insulation Support
	51A120-2	16-20	Insulation Support
	51A125-2	16-20	NON-Insulation Support

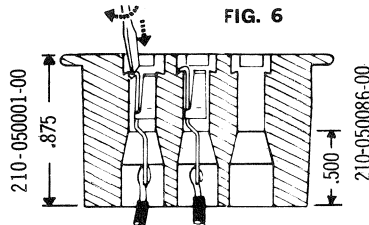
FIG. 5



Solder wire to socket lug and insert into socket. Lock-in is accomplished when fully seated.

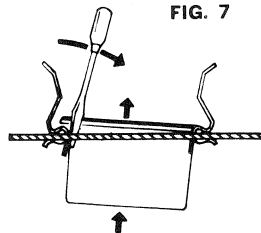
When quick connects are used the socket contacts should be inserted into sockets, then the quick connect pressed onto the male tab of socket contact.

FIG. 6



To remove socket contacts from the housing, insert a small sharp screwdriver as shown in the illustration and force the locking tab toward the center of the cavity. Then press tab downward to release socket contact.

FIG. 7



To remove socket housing from the chassis mounting clips, disengage the socket clip locking tabs while applying a slight removal pressure against the socket housing. Release the two tabs on one side, then on the other.



GUARDIAN ELECTRIC MANUFACTURING CO.
1550 W. Carroll Ave. • Chicago, Illinois 60607

IMPORTANT—OPPOSITE SIDE FOR OTHER MOUNTING OPTIONS