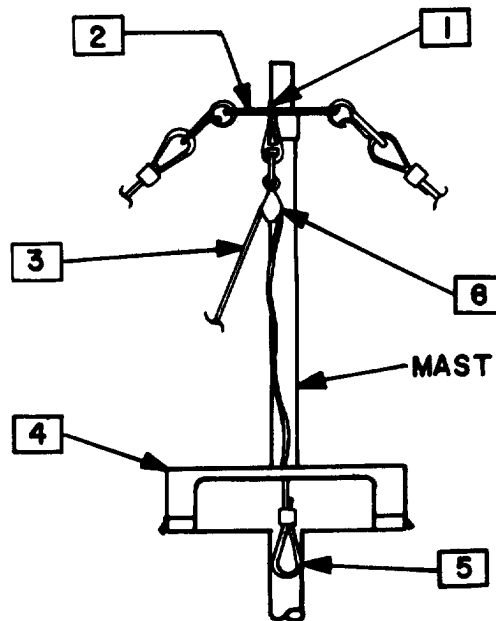


WARNING

Before connecting the halyard to the mast, inspect the rope for worn spots, frays, rotted portions and any other faults. Replace a defective rope before connecting the halyard.

h. Attaching Halyard to Mast. Connect the pulley snaphook **1** to a hole in the top guy plate **2**. Rotate the top guy plate so the hole connected to the halyard **3** is on the same side of the mast as the terminating resistor stop **4**. Thread the eyelet **5** on the halyard through the hole in the terminating resistor stop **4**. Thread the other end of the halyard through the pulley **6** and tie the two ends of the halyard together.



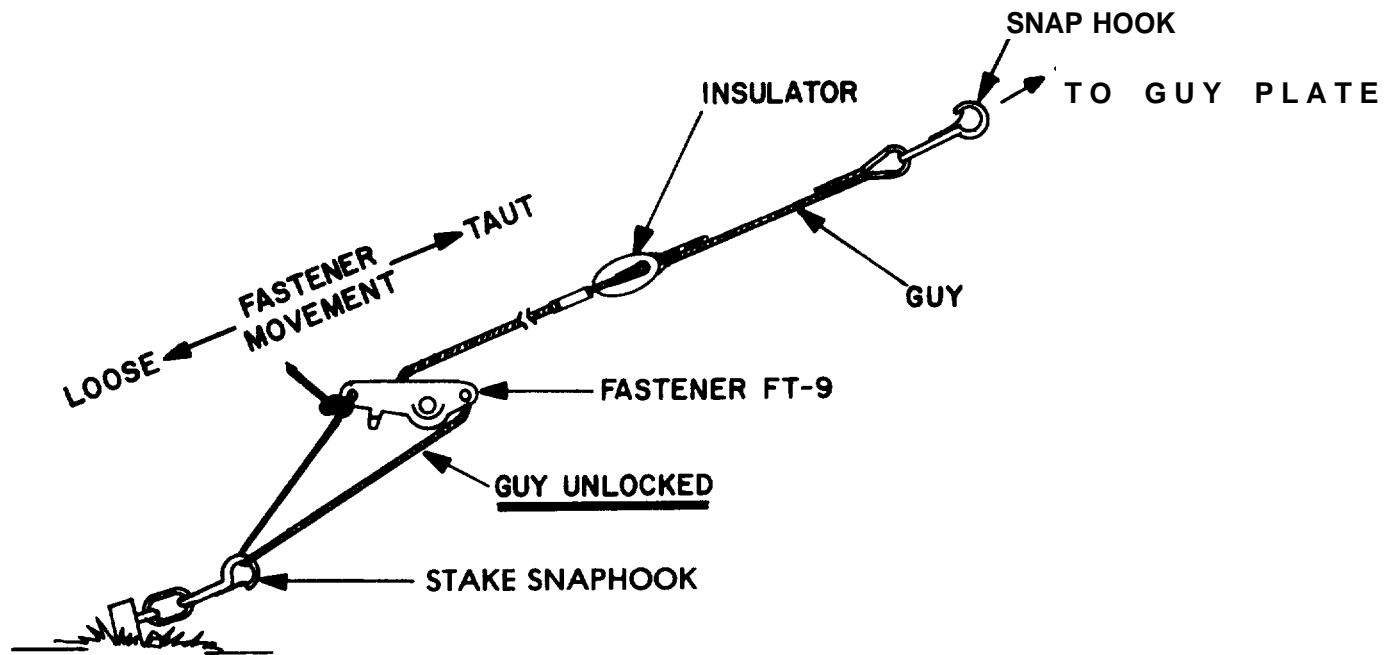
i. Attaching Guys to Mast and Guy Stakes.

WARNING

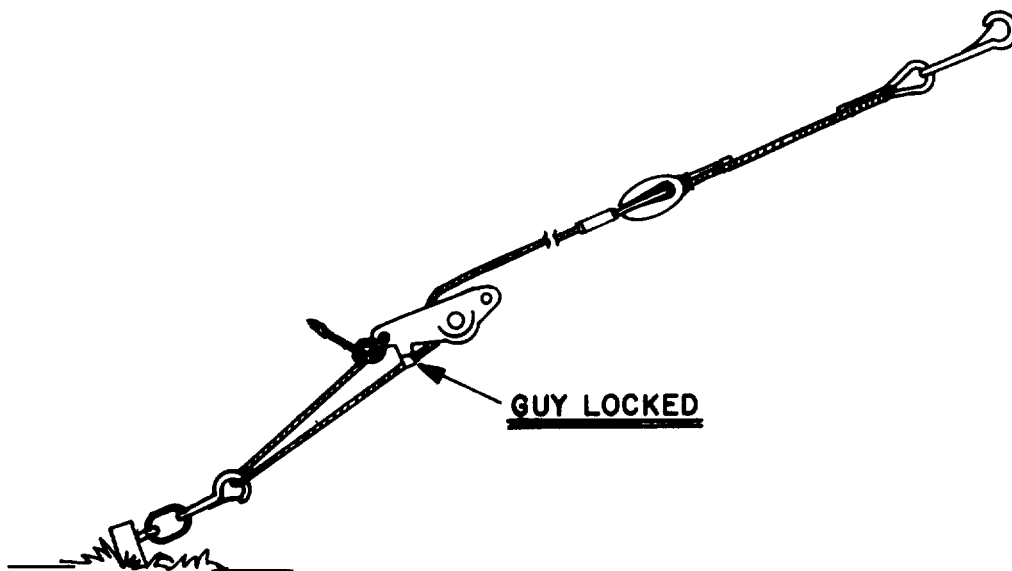
Before attaching the guys, inspect guy ropes for worn spots, frays, rotted portions and other faults. Replace defective rope/ropes before erecting the mast.

(1) General. The guys are color coded (or marked in feet) for identification.

Top guy - red - 50 feet (15.25 meters).
 Center guy - white - 40 feet (12.2 meters).
 Bottom guy - blue - 31 feet (9.46 meters).

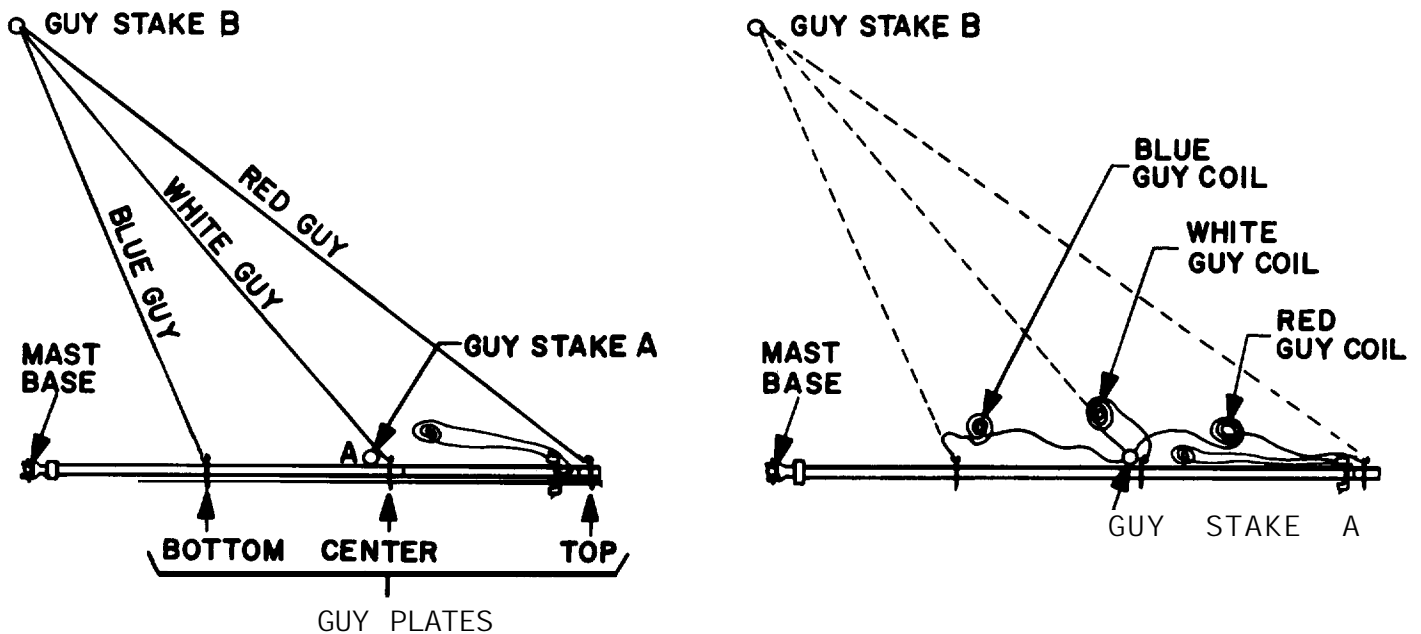


ADJUSTING POSITION

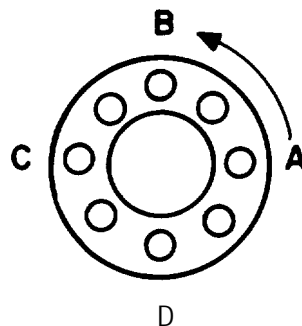


ADJUSTED POSITION

(2) Stake A Guys. Attach the snaphook on a red guy to the guy hole nearest the ground in the top guy plate. Attach the snaphook on a white guy to the guy hole nearest the ground in the center guy plate. Attach the snaphook on a blue guy to the guy hole nearest the ground in the bottom guy plate. Being careful not to tangle the guys, carry the free end of each of the three guys to guy stake B and attach the three guys to guy stake B. Adjust Fastener FT-9 on each guy to tighten the guys. While adjusting Fasteners FT-9, be careful not to bend the mast. Disconnect the three guys from guy stake B, coil each guy, lay the coils on the ground next to guy stake A and attach the loose end on each guy to guy stake A.

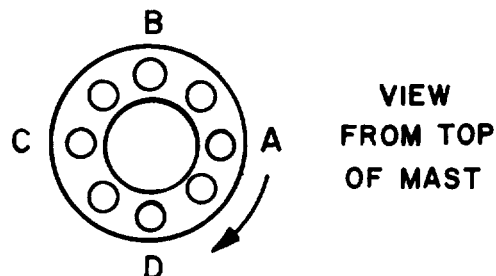
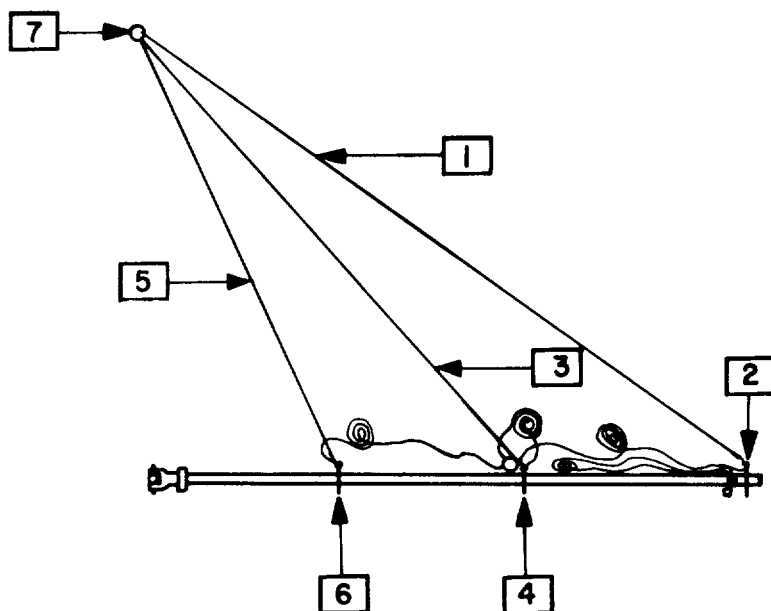


(3) Stake B Guys. The snaphooks on the guys to be connected to guy stake B are connected to the guy holes in the guy plates counterclockwise from the guy holes occupied by the snaphooks of the stake A guys.



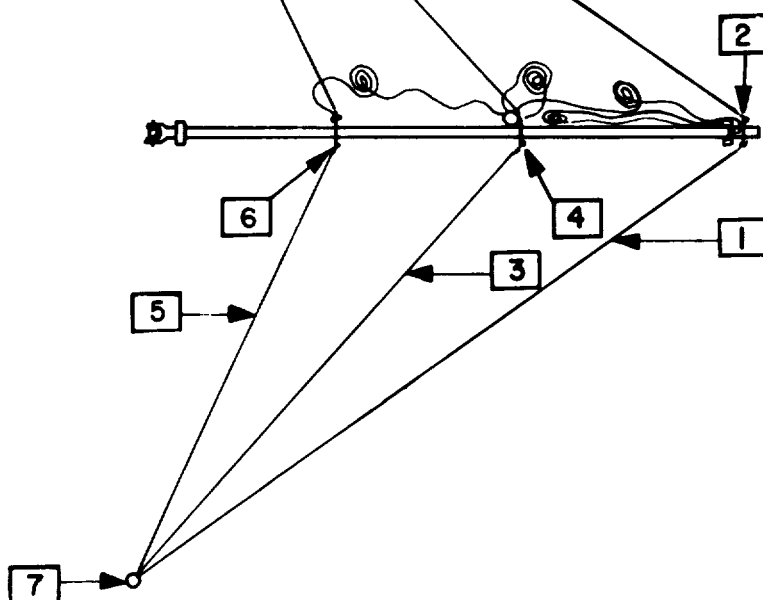
VIEW FROM TOP OF
MAST

Attach the snaphook on a red guy **1** to the B guy hole in the top guy plate **2**. Attach the snaphook on a white guy **3** to the B guy hole in the center guy plate **4**. Attach the snaphook on a blue guy **5** to the B guy hole in the bottom guy plate **6**. Being careful not to tangle the guys, carry the free end of each of the three guys to guy stake B **7** and attach the three guys to guy stake B **7**. Adjust Fastener FT-9 on each guy to tighten the guys. While adjusting Fasteners FT-9, be careful not to bend the mast.

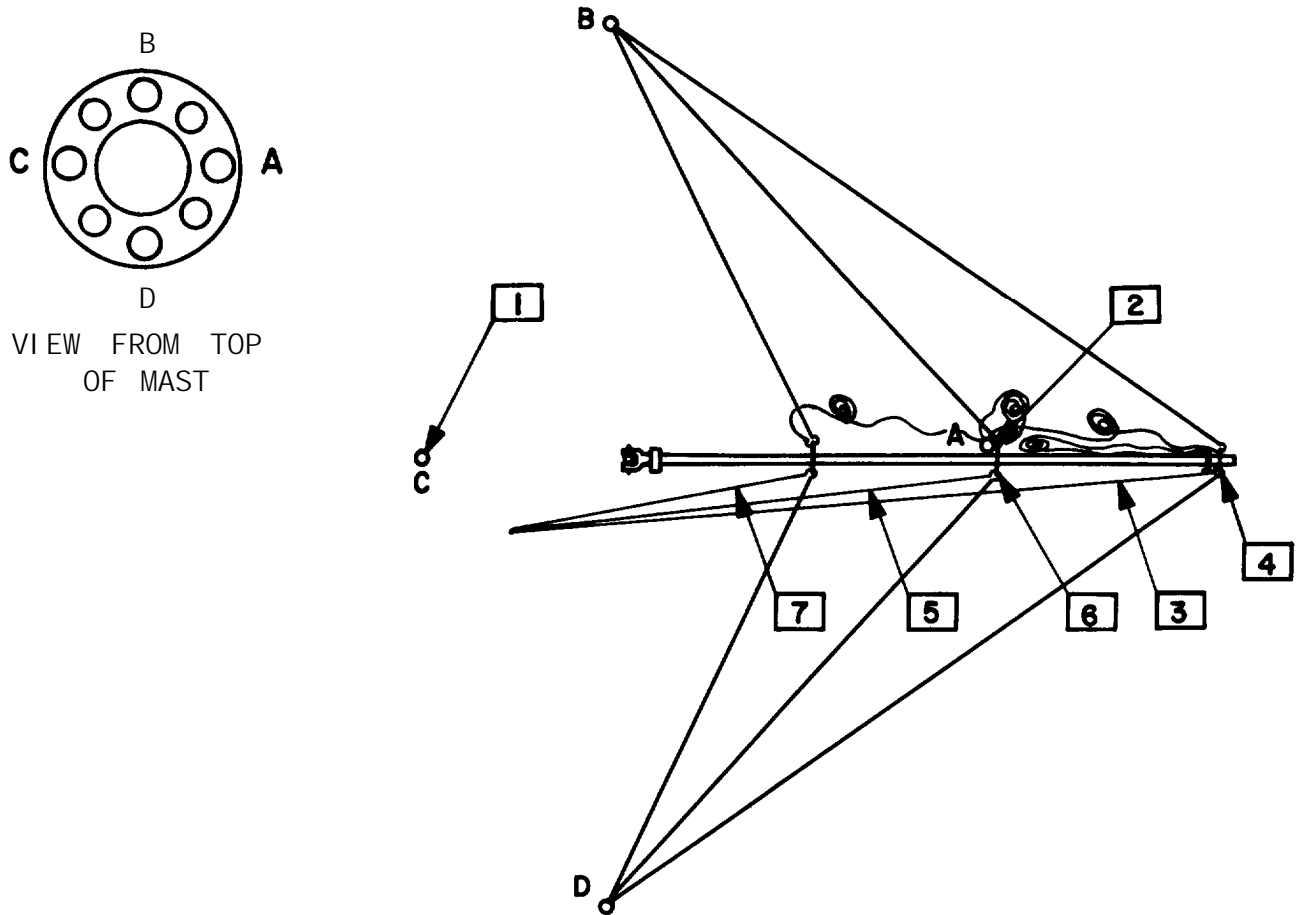


(4) Stake D Guys. The snaphooks on the guys to be connected to guy stake D are connected to the guy holes in the guy plates clockwise from the guy holes occupied by the snaphooks on the stake A guys.

Attach the snaphook on a red guy **1** to the D guy hole in the top guy plate **2**. Attach the snaphook on a white guy **3** to the D guy hole in the center guy plate **4**. Attach the snaphook on a guy **5** to the D guy hole in the bottom guy plate **6**. Being careful not to tangle the guys, carry the free end of each guy to guy stake D **7** and attach the three guys to guy stake D. Being careful not to bend the mast, adjust Fastener FT-9 on each guy to tighten the guy.



(5) Stake C Guys. The snaphooks on the guys to be connected to guy stake C **1** are connected to the guy holes in the guy Plates opposite the guy holes occupied by the snaphooks on the stake A guys **2**. Attach the snaphook on the remaining red guy **3** to the C guy hole in the top guy plate **4**. Attach the snaphook on the remaining white guy **5** to the C guy hole in the center guy plate **6**. Attach the remaining blue guy **7** to the C guy hole in the bottom guy plate **8**. Stretch the guys along the mast toward guy stake C **1**. The guys are not connected to guy stake C **1** until after the mast is raised (j below).



WARNINGS

- Do not try to raise the mast during an electrical storm or when a storm is imminent.
- Do not try to raise the mast without at least two people.
- When raising the mast, allow only the personnel involved in raising the mast in the area.
- If the antenna must be erected when the ground is wet, frozen or slippery or the wind is blowing at a rate greater than 15 miles per hour (13 knots), at least four people (two at each location) should be available.

CAUTION

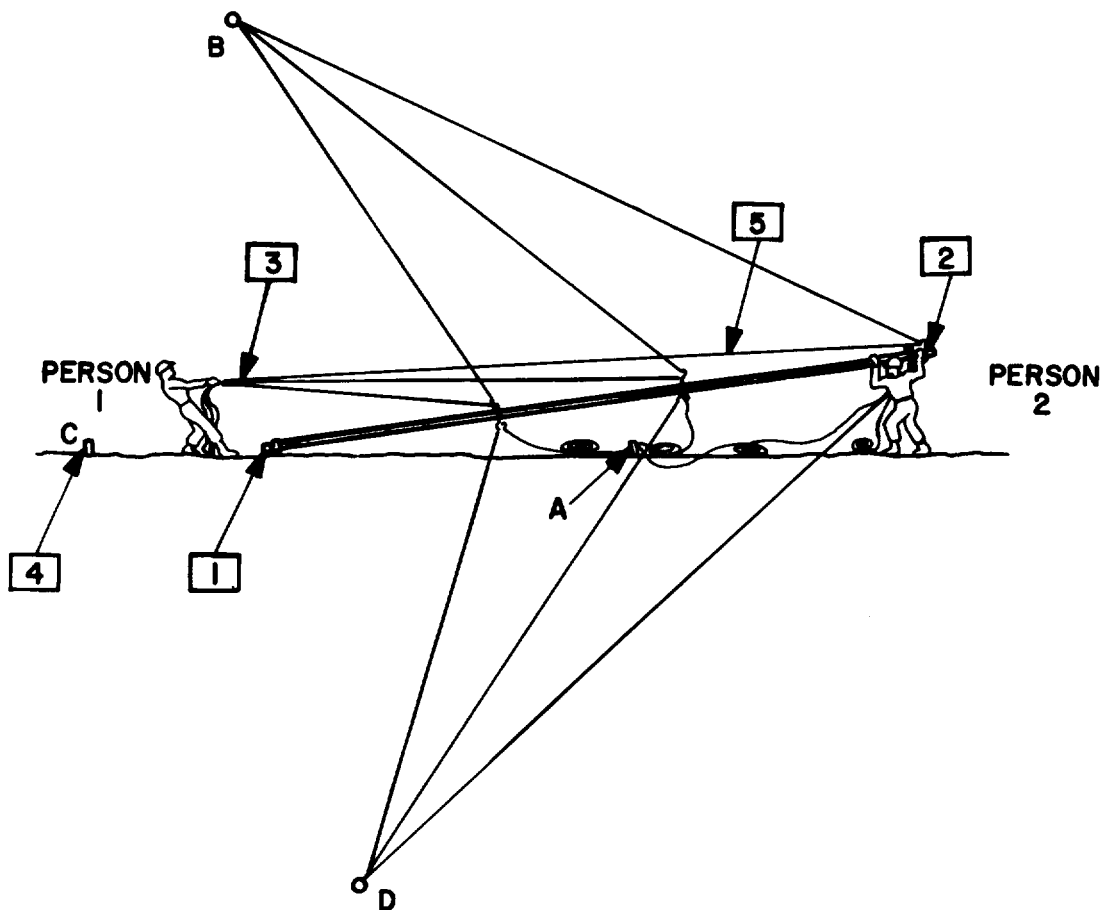
Before raising the mast, make sure the mast base swivel is positioned so that it will hinge (bend) toward guy stake C.

j. Raising the Mast.

(1) Two people are required to raise the mast. One person stands near the mast base **1**, the second stands near the top of the mast **2**.

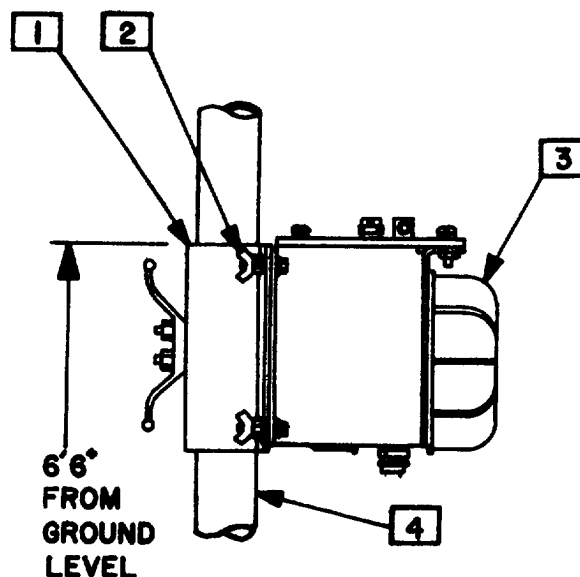
(2) Person 1 pulls on the free set of guys **3** (guys to be connected to guy stake C **4**) being sure to keep more tension on the top (red) guy **5** so that the mast bows slightly. At the same time, Person 2 lifts the top of the mast **2** from the ground and raises it above his head.

(3) Person 1 walks slowly backward toward guy stake C **4** while pulling on the guys **3**. At the same time, person 2 walks slowly forward toward the mast base **1** raising the mast as he goes.



(4) When the mast **1** is upright and the guys held by person 1 are taut, being careful not to tangle the guys, person 2 attaches the red guy **2**, then the white guy **3** and last the blue guy **4** to guy stake C **5**.

(5) If further adjustment is necessary to bring the mast more nearly vertical, first slack off the guys that are too short, then tighten the guys that are too long, and finally tighten the guys that were slacked off.



k. Assembly of Double Delta Antenna.

(1) Mounting the Balun. Using the balun clamp assembly **1** and four wingnuts **2**, mount the balun **3** to the mast **4** 6 feet 6 inches (2 meters) above ground level the balun clamp on the same side of the mast **4** as the terminating resistor stop clamp (para g above).

