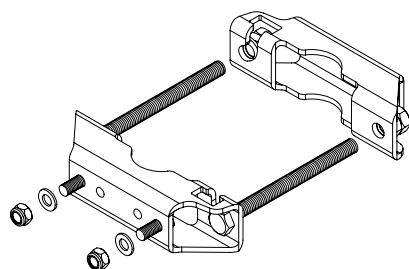
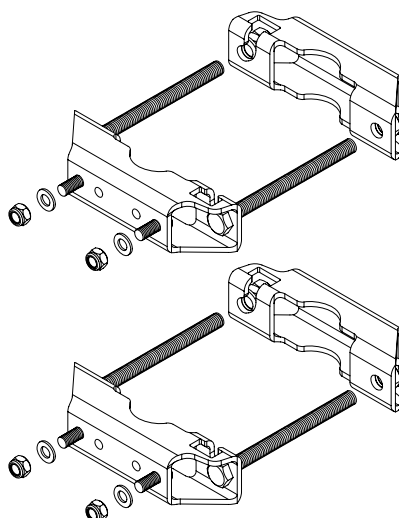


1 x 738 546*



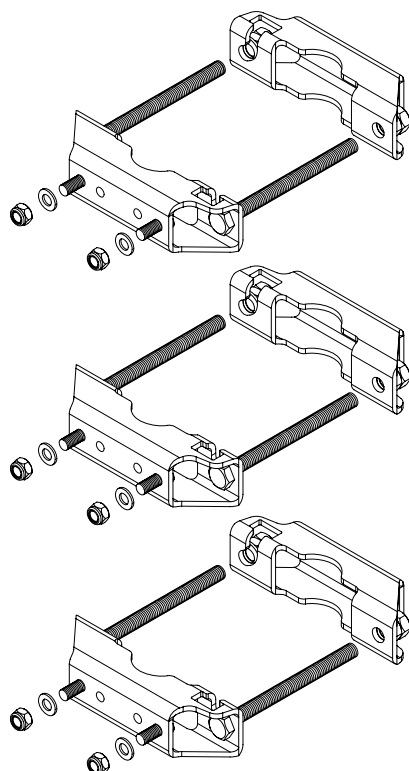
for use with most 1-point mount Cellular panel antennas
Mast dia. 2–4.5 inches (50–115 mm)
Weight 2 lb (0.9 kg)

2 x 738 546*

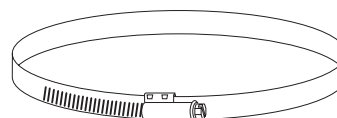


for use with 2-point mount panel antennas
≥ 48 inches (1219 mm) long
ships in sets of 2 brackets
Mast dia. 2–4.5 inches (50–115 mm)
Weight 4 lb (1.8 kg)

3 x 738 546*

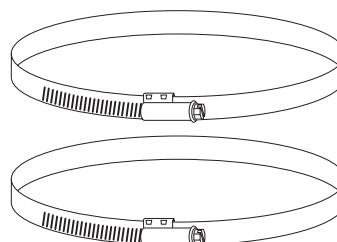


for use with most 3-point mount panel antennas
ships in sets of 3 brackets
Mast dia. 2–4.5 inches (50–115 mm)
Weight 6 lb (2.7 kg)



1 x 131 1847

for use with 1-point mount PCS panel antennas
<48 inches (1219 mm) long
and accessories
Mast dia. 2–5.7 inches (50–145 mm)



2 x 131 1847

for use with 2-point mount PCS panel antennas
<48 inches (1219 mm) long
and accessories
Mast dia. 2–5.7 inches (50–145 mm)

1 x 738 546
2 x 738 546
3 x 738 546

850 10002
850 10003

1 x 131 1847
2 x 131 1847

* **850 10002** Mounting clamp for 4.3–8.7 inch (110–220 mm) OD steel mast
11.9 lb (5.4 kg).

* **850 10003** Mounting clamp for 8.3–15 inch (210–380 mm) OD steel mast.
21.2 lb (9.6 kg).