

Cylinders

Threaded Mini-Cylinders

Single Acting

- Easy to use, basic hydraulic cylinders in SAE ported styles.
- Adjustable force ranging from "minimal" to maximum cylinder capacity, by adjusting the input pressure.
- Designed for long life in high production applications. Don't gamble with "cheap" cylinders which wear out prematurely.
- Reduce or eliminate part distortion by providing accurate repeatable clamping force.

Special tough wipers help keep chips and contaminants out on all cylinder sizes.

Positive piston stop shoulder keeps the spring from "bottoming out" guarding against premature spring failure which can plague other cylinder brands.

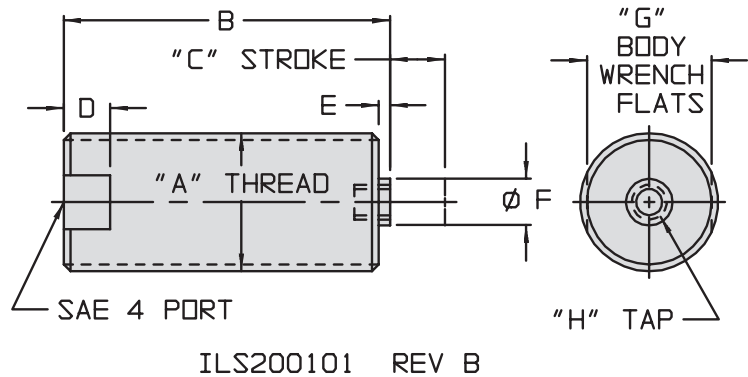
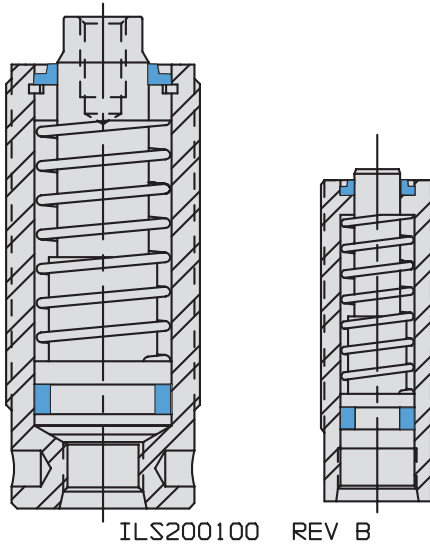
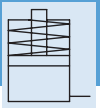
Available in three stroke lengths for each capacity, up to 1 1/4" stroke.



F-2

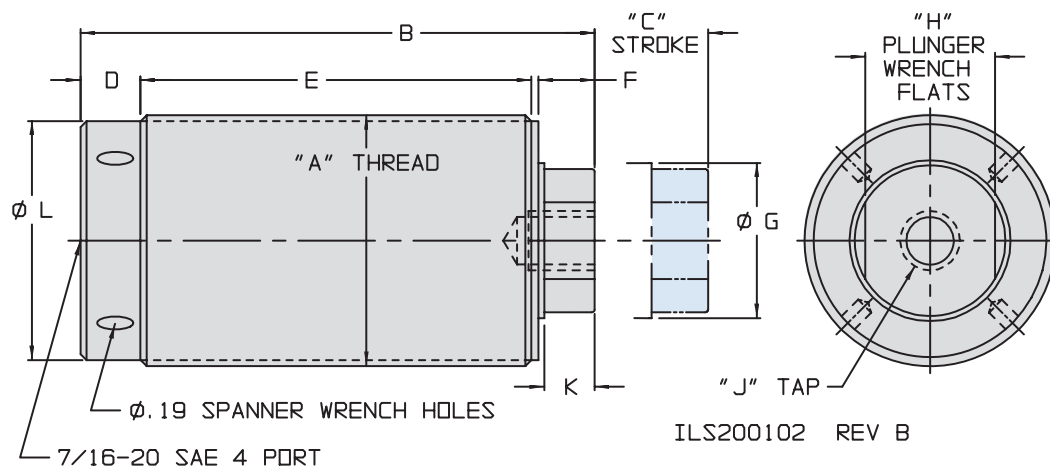
Model No.	Cylinder Capacity (lb.)** Extend	Stroke (in.)	Body Thread	Minimum Length (in.)	Effective Piston Area (sq. in.) Extend	Oil Capacity (cu. in.)** Extend
Single Acting (S/A)						
Cylinders, actuated hydraulically 1 direction, spring returned.						
20-0104-02	550	0.25	5/8-18	1.97	0.110	0.028
20-0104-07		0.75		2.60		0.083
20-0104-12		1.25		3.22		0.138
20-0105-03	980	0.38	3/4-16	2.00	0.196	0.074
20-0105-07		0.75		2.63		0.147
20-0105-12		1.25		3.30		0.245
20-0108-02	2200	0.25	1 1/16-16	2.19	0.442	0.111
20-0108-07		0.75		2.70		0.332
20-0108-12		1.25		3.39		0.553

** Cylinder capacities are listed at 5,000 psi maximum operating pressure. The output force is adjustable by varying the hydraulic system pressure. To determine approximate output force for your application, multiply the Piston Area times Your System Operating Pressure. (Actual force may vary slightly due to friction loss, seal and wiper drag, and/or return springs.)



Dimensions 550 lb and 980 lb Capacities

Model No.	Capacity (lb)	A	B	C	D	E	F	G	H
Single Acting (S/A) Cylinders, actuated hydraulically 1 direction, spring returned.									
20-0104-02	550	5/8-18	1.97	0.25	0.25	0.10	0.25	0.56	8-32 x 0.25
20-0104-07			2.60	0.75					
20-0104-12			3.22	1.25					
20-0105-03	980	3/4-16	2.00	0.38	0.25	0.06	0.25	0.68	8-32 x 0.25
20-0105-07			2.63	0.75					
20-0105-12			3.30	1.25					



Dimensions 2200 lb Capacity

Model No.	Capacity (lb)	A	B	C	D	E	F	G	H	J	K	L
Single Acting (S/A) Cylinders, actuated hydraulically 1 direction, spring returned												
20-0108-02	2200	1 1/16-16	2.19	0.25	0.50	1.40	0.26	0.50	0.43	1/4-20 X 0.44	0.19	0.97
20-0108-07			2.70	0.75		1.90	0.26					
20-0108-12			3.39	1.25		2.63	0.21					