



Hand-held Refractometers

MASTER of REFRACTOMETRY



Pocket PAL series

The PAL is a completely newly designed digital hand-held instrument that will change the traditional conceptions of refractometers.

●Dimensions and weight : 55×31×109mm, 100g

DIGITAL HAND-HELD "POCKET" REFRACTOMETERS



PAL-1 Cat.No. 3810

PAL-2 Cat.No. 3820

PAL-3 Cat.No. 3830

PAL-α Cat.No. 3840

Feature

- Calibration with water only
- Extremely water resistant (IP65)
- Light & Compact, 100g
- Revolutionary new feature ELI*
- Automatic Temperature Compensation (A.T.C.)
- Measurement in 3 seconds
- Ergonomically designed for one-handed operation
- Equipped with a strap holder option
- Convenient storage case

* External Light Interference (ELI) -Patent Pending

Everyone is talking about the new "Pocket" as featured on recent TV programs and Magazines



Always clean and shiny!!
Can be easily rinsed under running water.



Patent for Design Registration No. ZL200310103015.2 (China)
Patent for Invention Registration No. ZL03303431.1 (China), 089244 (Taiwan)
Patent pending in U.S.A., and Germany and all other countries around the world.



Digital Hand-held "Pocket" Refractometers (Special Scales)

Model	Scale
Brix	
PAL-1	Brix (0.0~53.0%)
PAL-2	Brix (45.0~93.0%)
PAL-3	Brix (0.0~93.0%)
PAL-α	Brix (0.0~85.0%)

Sugars	
PAL-12S	Dextran
PAL-14S	Fructose
PAL-15S	Glucose
PAL-16S	High Fructose Corn Syrup (HFCS-42)
PAL-17S	High Fructose Corn Syrup (HFCS-55)
PAL-18S	Inverted sugar
PAL-19S	Lactose
PAL-20S	Maltose

Honey	
PAL-22S	Honey moisture

Soy milk, Bittern (Magnesium chloride)	
PAL-27S	Soy milk
PAL-43S	Bittern (Magnesium chloride)

Cooking	
PAL-96S	Chinese noodle soup / Baume of kansui (Double scale)
PAL-98S	Condiment
PAL-Pâtissier	Brix / Baume (Double scale) NEW

Salinity	
PAL-03S	Sodium chloride (g/100g)
PAL-106S	Sodium chloride (g/100ml)
PAL-04S	Sodium chloride (S.G.)
PAL-05S	Sodium chloride (Baume)

Sea water	
PAL-06S	Sea water (Concentration)

Model	Scale
PAL-07S	Sea water (S.G.)
PAL-08S	Sea water (Baume)

Food additives, Ingredients	
PAL-29S	Citric acid
PAL-30S	Acetic acid
PAL-32S	Phosphoric acid
PAL-64S	Sodium bicarbonate
PAL-65S	Sodium tartrate
PAL-70S	Potassium phosphate

Alcohol liquid	
PAL-34S	Ethyl alcohol
PAL-36S	Methyl alcohol
PAL-37S	Isopropyl alcohol
PAL-85S	Polyvinyl alcohol

Pharmaceutical reagents, Ingredients	
PAL-12S	Dextran
PAL-13S	Creatine
PAL-23S	Glycerin (Low concentration)
PAL-24S	Glycerin (High concentration)
PAL-25S	Inulin
PAL-26S	Mannitol
PAL-31S	Formic acid
PAL-32S	Phosphoric acid
PAL-51S	Sodium bromide
PAL-55S	Magnesium sulfate
PAL-64S	Sodium bicarbonate
PAL-65S	Sodium tartrate
PAL-66S	Potassium oxalate
PAL-68S	Potassium dichromate
PAL-70S	Potassium phosphate
PAL-72S	Sodium tungstate

Wine	
PAL-79S	T.A. 1990

Model	Scale
PAL-80S	T.A. 1971
PAL-83S	KMW (or Babo)
PAL-84S	Baume
PAL-86S	Oe (Ger) / Brix (Double scale)
PAL-87S	Oe (Oechsle) / Brix (Double scale)

Clinical inspection, Test	
PAL-42S	Cesium chloride
PAL-53S	Copper sulfate (Concentration)
PAL-54S	Copper sulfate (S.G.)

Sterilization, Bleaching	
PAL-39S	Hydrogen peroxide

Alkaline liquid	
PAL-40S	Sodium hydroxide

Snow-melting agent	
PAL-03S	Snow-melting agent (Sodium chloride)
PAL-41S	Snow-melting agent (Calcium chloride)
PAL-43S	Snow-melting agent (Magnesium chloride)

Coolant (Double scale)	
PAL-88S	Propylene glycol / Freezing point of Propylene glycol (°C)
PAL-89S	Propylene glycol / Freezing point of Propylene glycol (°F)
PAL-91S	Ethylene glycol / Freezing point of Ethylene glycol (°C)
PAL-92S	Ethylene glycol / Freezing point of Ethylene glycol (°F)

Artificial leather, Fabric	
PAL-38S	Dimethyl formamide

Paste	
PAL-21S	Dextrin

Model	Scale
Chemical product's ingredient	
PAL-23S	Glycerin (Low concentration)
PAL-24S	Glycerin (High concentration)
PAL-30S	Acetic acid
PAL-31S	Formic acid
PAL-32S	Phosphoric acid
PAL-44S	Lithium chloride
PAL-45S	Barium chloride
PAL-46S	Cobalt chloride
PAL-47S	Ferric chloride
PAL-48S	Strontium chloride
PAL-49S	Potassium chloride
PAL-50S	Potassium bromide
PAL-51S	Sodium bromide
PAL-52S	Potassium iodide
PAL-53S	Copper sulfate (Concentration)
PAL-54S	Copper sulfate (S.G.)
PAL-55S	Magnesium sulfate
PAL-56S	Potassium sulfate
PAL-57S	Nickel sulfate
PAL-58S	Sodium nitrate
PAL-59S	Zinc sulfate
PAL-60S	Silver nitrate
PAL-61S	Sodium nitrate
PAL-62S	Potassium carbonate
PAL-63S	Sodium carbonate
PAL-64S	Sodium bicarbonate
PAL-67S	Potassium chromate
PAL-68S	Potassium dichromate
PAL-69S	Sodium thiosulfate
PAL-70S	Potassium phosphate
PAL-71S	Sodium molybdate
PAL-72S	Sodium tungstate

Cutting oil	
PAL-102S	Cutting oil

Refractive index	
PAL-RI	Refractive index



HAND-HELD REFRACTOMETERS

MASTER series

Design Registration No.000379326-0001, 000379326-0002 (EU) ZL 2005 3 0116403.4,5 (China), D111526 (Taiwan) 1255763, 1255764, 1255765, 1255766, 1255767 (Japan) Patent pending in U.S.A. and all other countries around the world.

Wide variety of ATAGO's Hand-Held Refractometers. Pick up the best refractometer depending on the type of sample and its environment.

Hand-held refractometers MASTER qseries

NON A.T.C. model	A.T.C. & Water Resistant (IP65) model	A.T.C. model	A.T.C. & Water Resistant (IP65) (Heat Resistant model)
MASTER-M MASTER-2M MASTER-3M MASTER-4M MASTER-53M MASTER-RI (nD)	MASTER- α MASTER-2 α MASTER-3 α MASTER-4 α MASTER-53 α	MASTER-T MASTER-2T MASTER-3T MASTER-4T MASTER-53T	MASTER-50H MASTER-80H MASTER-93H MASTER-100H

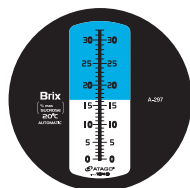
MASTER SERIES REFRACTOMETER (WATER RESISTANT & A.T.C.)

MASTER- α Cat.No. 2311

NEW

This new type of Hand-Held refractometer is the first to be equipped with Automatic Temperature Compensation and Water Resistant (IP65) at the same time. While featuring functions such as Easy-to-Read, Easy-to-Hold, Smooth sampling, Easy disposal of sample from the edge, the improvement of hygiene aspect by employing the new type of grip, and well balanced structure, emphasis is also placed on its design, well exemplified by the streamlined body and the strong grip with rich texture.

Scale range	: Brix 0.0 to 33.0% (Automatic Temperature Compensation)
Minimum scale	: 0.2%
Accuracy	: $\pm 0.2\%$ (10 to 30°C)
Repeatability	: Brix $\pm 0.1\%$
International protection class	: IP65 (except eye piece)
Size and weight	: 3.3×3.3×20.4cm, 160g



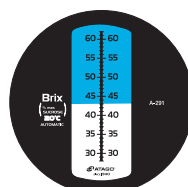
MASTER SERIES REFRACTOMETER (WATER RESISTANT & A.T.C.)

MASTER-2 α Cat.No. 2321

NEW

MASTER-2 α is mid-range measurement range Brix 28.0 to 62.0% model of the MASTER- α . It is convenient for measuring a variety of sauces, soy sauce, seasoning in liquid form as well as for low-sugar jams and spreads. It is an Automatic Temperature Compensation (A.T.C.) model with water resistant properties (IP65).

Scale range	: Brix 28.0 to 62.0% (Automatic Temperature Compensation)
Minimum scale	: 0.2%
Accuracy	: $\pm 0.2\%$ (10 to 30°C)
Repeatability	: Brix $\pm 0.1\%$
International protection class	: IP65 (except eye piece)
Size and weight	: 3.3×3.3×20.4cm, 160g



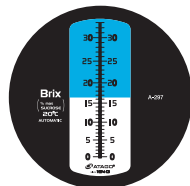
MASTER SERIES REFRACTOMETER (A.T.C.)

MASTER-T Cat.No. 2312

NEW

This is the successor model to the conventional ATC-1E. Automatic Temperature Compensation feature only. The Master-T is a good alternative choice when the water resistant feature is not a priority.

Scale range	: Brix 0.0 to 33.0% (Automatic Temperature Compensation)
Minimum scale	: 0.2%
Accuracy	: $\pm 0.2\%$ (10 to 30°C)
Repeatability	: Brix $\pm 0.1\%$
Size and weight	: 3.3×3.3×20.4cm, 160g



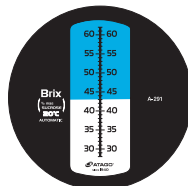
MASTER SERIES REFRACTOMETER (A.T.C.)

MASTER-2T Cat.No. 2322

NEW

MASTER-2T is mid-range model of the MASTER-T. Automatic Temperature Compensation feature only. The Master-T is a good alternative choice when the water resistant feature is not a priority.

Scale range	: Brix 28.0 to 62.0% (Automatic Temperature Compensation)
Minimum scale	: 0.2%
Accuracy	: $\pm 0.2\%$ (10 to 30°C)
Repeatability	: Brix $\pm 0.1\%$
Size and weight	: 3.3×3.3×20.4cm, 160g



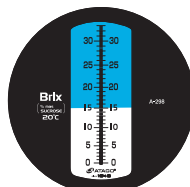
MASTER SERIES REFRACTOMETER

MASTER-M Cat.No. 2313

NEW

This is the successor model to the conventional N-1 α . The Master-M is a good alternative choice when the water resistant feature is not a priority and the Temperature Compensation will be carried out manually. Not equipped with the Automatic Temperature Compensation feature.

Scale range	: Brix 0.0 to 33.0%
Minimum Scale	: 0.2%
Size and weight	: 3.3×3.3×20.4cm, 160g



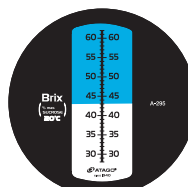
MASTER SERIES REFRACTOMETER

MASTER-2M Cat.No. 2323

NEW

MASTER-2M is mid-range measurement range Brix 28.0 to 62.0% model of the MASTER-M. The Master-M is a good alternative choice when the water resistant feature is not a priority and the Temperature Compensation will be carried out manually.

Scale range	: Brix 28.0 to 62.0%
Minimum Scale	: 0.2%
Size and weight	: 3.3×3.3×20.4cm, 160g



MASTER SERIES REFRACTOMETER (Water Resistant & A.T.C.)

MASTER-3 α Cat.No.2331 MASTER-4 α Cat.No.2341

NEW

MASTER-3 α , MASTER-4 α are high-range model of the MASTER- α . The MASTER-3 α , MASTER-4 α are suited for use with food products of high sugar content such as malt, honey, jam, marmalade, etc

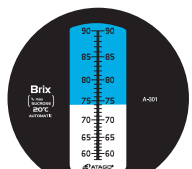
Scale range :MASTER-3 α Brix 58.0% to 90.0%
MASTER-4 α Brix 45.0% to 82.0%

Minimum scale :Brix0.2%

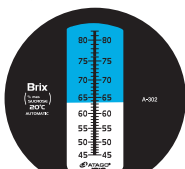
Accuracy :Brix \pm 0.2% (10 to 40°C)

Repeatability :Brix \pm 0.1%

Size and weight :3.3 \times 3.3 \times 16.8cm,120g



MASTER-3 α



MASTER-4 α

MASTER SERIES REFRACTOMETER (A.T.C.)

MASTER-3T Cat.No.2332 MASTER-4T Cat.No.2342

NEW

MASTER-3T, MASTER-4T are high-range model of the MASTER-T. Automatic Temperature Compensation feature only.

MASTER-3T, MASTER-4T are a good alternative choice when the water resistant feature is not a priority.

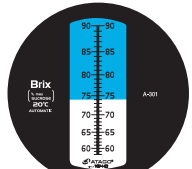
Scale range :MASTER-3T Brix 58.0% to 90.0%
MASTER-4T Brix 45.0% to 82.0%

Minimum scale :Brix0.2%

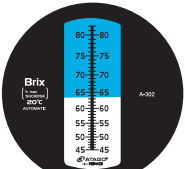
Accuracy :Brix \pm 0.2% (10 to 40°C)

Repeatability :Brix \pm 0.1%

Size and weight :3.3 \times 3.3 \times 16.8cm,120g



MASTER-3T



MASTER-4T

MASTER SERIES REFRACTOMETER

MASTER-3M Cat.No.2333 MASTER-4M Cat.No.2343

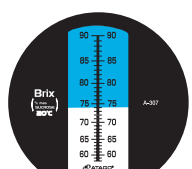
NEW

MASTER-3M, MASTER-4M are high-range model of the MASTER-M. MASTER-3M, MASTER-4M are a good alternative choice when the water resistant feature is not a priority and the Temperature Compensation will be carried out manually.

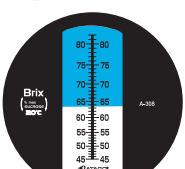
Scale range :MASTER-3M Brix 58.0% to 90.0%
MASTER-4M Brix 45.0% to 82.0%

Minimum scale :Brix0.2%

Size and weight :3.3 \times 3.3 \times 16.8cm,120g



MASTER-3M



MASTER-4M

MASTER SERIES REFRACTOMETER (Water Resistant & A.T.C.)

MASTER-53 α Cat.No. 2351

NEW

MASTER-53 α is wide range model of the MASTER- α . MASTER-53 α is capable of measuring not only various kinds of juice, coffee, and other beverages but also processed food such as sauce, ketchup, low calorie jam, etc. It is an Automatic Temperature Compensation (A.T.C.) model with water resistant feature (IP65).

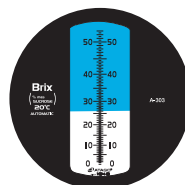
Scale range :0.0% to 53.0%

Minimum scale :Brix0.5%

Accuracy :Brix \pm 0.5% (10 to 30°C)

Repeatability :Brix \pm 0.25%

Size and weight :3.3 \times 3.3 \times 16.8cm,120g



MASTER SERIES REFRACTOMETER (A.T.C.)

MASTER-53T Cat.No.2352

NEW

MASTER-53T is wide range model of the MASTER-T. MASTER-53T is capable of measuring not only various kinds of juice, coffee, and other beverages but also processed food such as sauce, ketchup, low calorie jam, etc. It is an Automatic Temperature Compensation (A.T.C.) model. The Master-53T is a good alternative choice when the water resistant feature is not a priority.

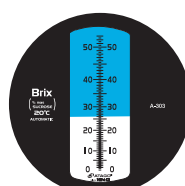
Scale range :MASTER-53T Brix0.0% to 53.0%

Minimum scale :Brix0.5%

Accuracy :Brix \pm 0.5% (10 to 30°C)

Repeatability :Brix \pm 0.25%

Size and weight :3.3 \times 3.3 \times 16.8cm,120g



MASTER SERIES REFRACTOMETER

MASTER-53M Cat.No.2353

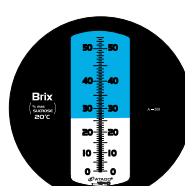
NEW

MASTER-53M is wide range model of the MASTER-M. The MASTER-53M is a good alternative choice when the water resistant feature is not a priority and the Temperature Compensation will be carried out manually.

Scale range :Brix0.0% to 53.0%

Minimum scale :Brix0.5%

Size and weight :3.3 \times 3.3 \times 16.8cm,120g



MASTER SERIES REFRACTOMETER

MASTER-RI Cat.No.2612

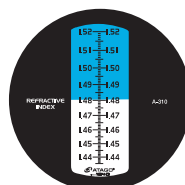
NEW

MASTER-RI is refractive-index model of the MASTER-Series. MASTER-RI can be used for measuring the refractive index of vegetable oil, petroleum, oil slicks, etc.

Scale range :Refractive index 1.435 to 1.520

Minimum scale :Refractive index 0.001

Size and weight :3.3 \times 3.3 \times 16.8cm,120g



MASTER SERIES REFRACTOMETER (Water Resistant & A.T.C. -Heat Resistant model-)

NEW

MASTER-50H Cat.No.2354

MASTER-80H Cat.No.2364

MASTER-93H Cat.No.2374

MASTER-100H Cat.No.2384

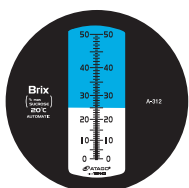
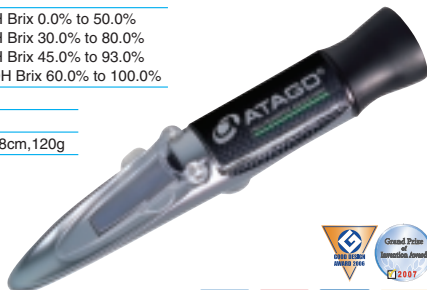
MASTER-H Series are the Heat models of the MASTER- α series. Designed for measuring high-temperature samples during cooking or boiling process at production sites. Corrosion resistant tempered glass prism are adopted to provide an extended service life.

Scale range :MASTER-50H Brix 0.0% to 50.0%
MASTER-80H Brix 30.0% to 80.0%
MASTER-93H Brix 45.0% to 93.0%
MASTER-100H Brix 60.0% to 100.0%

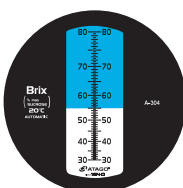
Minimum scale :Brix0.5%

Accuracy :Brix $\pm 0.5\%$

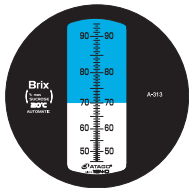
Size and weight :3.3 \times 3.3 \times 16.8cm,120g



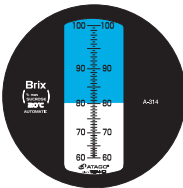
MASTER-50H



MASTER-80H



MASTER-93H



MASTER-100H

MASTER SERIES WINE REFRACTOMETER

The MASTER-Series Wine Refractometers are used for measuring grape must concentrations.



MASTER SERIES WINE REFRACTOMETER (A. T. C. and Water Resistant)

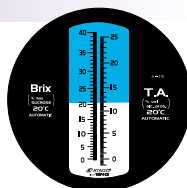
MASTER-TA Cat.No.2590

Scale range :T.A. 0.0 to 25.0%
Brix 0.0% to 40.0%

Minimum scale :T.A. 0.2%
Brix 0.2%

Accuracy :T.A. $\pm 0.3\%$ (10 to 30°C)
Brix $\pm 0.5\%$

Size and weight :3.3 \times 3.3 \times 20.4cm,160g



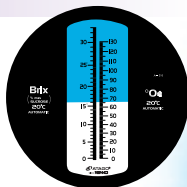
MASTER-OE Cat.No.2591

Scale range :Oe. 0.0 to 130°
Brix 0.0 to 33.0%

Minimum scale :Oechsle 1°
Brix 0.2%

Accuracy :Oechsle $\pm 1^\circ$
Brix $\pm 0.2\%$ (10 to 30°C)

Size and weight :3.3 \times 3.3 \times 20.4cm,160g



HAND-HELD REFRACTOMETER

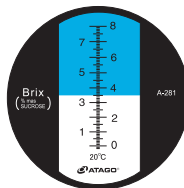
N-8 α Cat.No. 2360

The N-8 α is especially developed for very low concentration solution, Brix 8% or less. A special light filter is in place to allow for higher contrast to view the boundary line.

Scale range : Brix 0.0 to 8.0%

Minimum scale : 0.1%

Size and weight : 4 \times 4 \times 21cm, 260g



HAND-HELD REFRACTOMETERS

N-10E Cat.No. 2151, **N-20E** Cat.No. 2161

AUTOMATIC TEMPERATURE COMPENSATING TYPE REFRACTOMETER

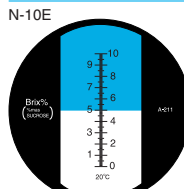
ATC-20E Cat.No. 2323

The N-10E is a model developed for very low concentration use where the Brix is 10% or less. The scale is big, and precise measurements are possible. Good for measurements of low concentration fruit juices, etc.

Scale range : Brix 0.0 to 10.0%

Minimum scale : 0.1%

Size and weight : 4 \times 4 \times 20cm, 200g



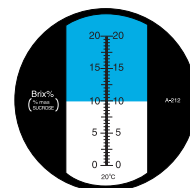
ATC-20E

Scale range : Brix 0.0 to 20.0%

Minimum scale : 0.1%

Size and weight : 4 \times 4 \times 20cm, 200g

N-20E/ATC-20E



The N-20E and ATC-20E are widely used for measuring the concentration of low density aqueous solutions such as tomato juices, fruit juice, cola, etc. The ATC-20E is an Automatic Temperature Compensating type refractometer which automatically provides correct measurement values of 20°C.

NEW

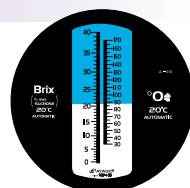
MASTER-GOE Cat.No.2592

Scale range :German Oechsle 30 to 170°
Brix 0.0 to 40.0%

Minimum scale :German Oechsle 1°
Brix 0.2%

Accuracy :German Oechsle $\pm 2^\circ$
Brix $\pm 0.5\%$ (10 to 30°C)

Size and weight :3.3 \times 3.3 \times 20.4cm,160g



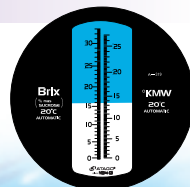
MASTER-KMW Cat.No.2593

Scale range :KMW 0.0 to 27.0°
Brix 0.0 to 33.0%

Minimum scale :KMW 0.2°
Brix 0.2%

Accuracy :KMW 0.2°
Brix $\pm 0.2\%$ (10 to 30°C)

Size and weight :3.3 \times 3.3 \times 20.4cm,160g



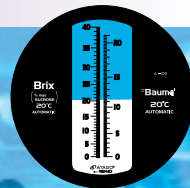
MASTER-BAUME Cat.No.2594

Scale range :Baume 0.0 to 21.0°
Brix 0.0 to 40.0%

Minimum scale :Baume 0.2°
Brix 0.2%

Accuracy :Baume $\pm 0.3^\circ$
Brix $\pm 0.5\%$ (10 to 30°C)

Size and weight :3.3 \times 3.3 \times 20.4cm,160g



SALINITY REFRACTOMETERS

S-10E Cat.No. 2412, S-28E Cat.No. 2422

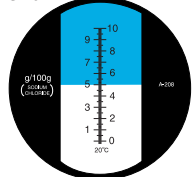
The S-10E and the S-28E are salt concentration refractometers with special scales. The units can be used for controlling the concentration of saltwater used in rinsing seafood or salinity in cooking.

Scale range : 0.0 to 10.0% sodium chloride

Minimum scale : 0.1%

Size and weight : 4×4×20cm, 200g

S-10E

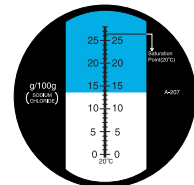


Scale range : 0.0 to 28.0% sodium chloride

Minimum scale : 0.2%

Size and weight : 4×4×18cm, 170g

S-28E



SALINITY REFRACTOMETERS (sea water) / ATC TYPE SALINITY REFRACTOMETERS (sea water)

S/Mill-E Cat.No. 2442, ATC-S/Mill-E Cat.No. 2444

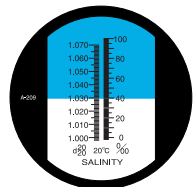
The S/Mill-E density meter measures the salinity and the specific gravity of sea water. The salinity of sea water is displayed in parts per mille (‰) unit. The ATC-S/Mill-E model is designed with the Automatic Temperature Compensation feature which automatically provides the measurement values at the compensated temperature of 20°C (compensation range 10 to 30°C).

Scale range : Salinity 0.0 to 100.0‰
Specific gravity 1.000 to 1.070

Minimum scale : Salinity 1‰
Specific gravity 0.001

Accuracy : (ATC-S/Mill-E) Salinity ±1‰
Specific gravity ±0.001 (10 to 30°C)

Size and weight : 4×4×20cm, 200g



S/Mill-E

ATC-S/Mill-E

HAND-HELD REFRACTOMETERS (full range)

HSR-500 Cat.No. 2340, R-5000 Cat.No. 2350

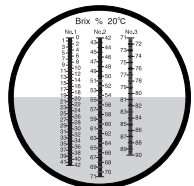
The refractive index of a sugar solution is in proportion to sugar concentration. The model HSR-500 uses this principle, where a transmitting system is applied, to measure within a full range of Brix (0.0-90.0%). The R-5000 can be used for simple, quick and easy measurements of refractive index.

HSR-500

Scale range : Brix 0.0 to 90%
(3-stage switching)

Minimum scale : 0.2%

Size and weight : 4×4×20cm, 600g

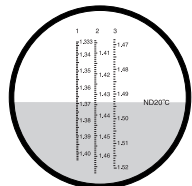


R-5000

Scale range : nD 1.333 to 1.520
(3-stage switching)

Minimum scale : 0.001

Size and weight : 4×4×20cm, 600g

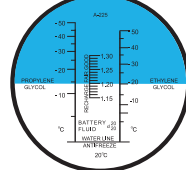


BATTERY COOLANT CHECKERS

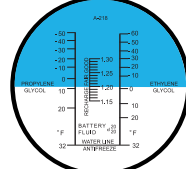
BC-2E Cat.No. 2832, BC-3E Cat.No. 2842

This refractometer has an exclusive scale for measuring specific gravity of battery fluid and for checking the freezing temperature of ethylene glycol and propylene glycol which are used as antifreeze mixture in automobiles, thermal catalyst for solar power systems and other industrial applications. The scale of the model BC-2E is graduated in °C while that of the BC-3E is in °F.

BC-2E



BC-3E



BC-2E

BC-3E

Scale range : Ethylene glycol 0 to -50°C 32 to -60°F
Propylene glycol 0 to -50°C 32 to -50°F

Battery fluid d₂₀²⁰ 1.150 to 1.300

Size and weight : 4×4×14cm, 140g

COOLANT REFRACTOMETER

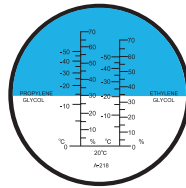
BR-1E Cat.No. 2821

This refractometer can be used for measuring the concentration and freezing temperature of ethylene glycol and propylene glycol which are used as anti-freeze mixture for automobiles, thermal catalyst for solar power systems, and other industrial applications. Designed with a dual scale, the BR-1E is ideal for field measurement.

Scale range : Ethylene glycol 0 to 70%, 0 to -50°C
Propylene glycol 0 to 70%, 0 to -50°C

Minimum scale : 5%, 5°C

Size and weight : 4×4×14cm, 140g



HAND-HELD ALCOHOL REFRACTOMETER

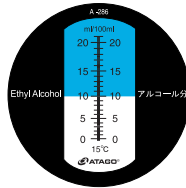
AL-21α Cat.No. 2361

Designed ideally to measure pure alcohol and alcohol after distillation.

Scale range : Ethyl Alcohol Concentration 0.0 to 21.0% (ml/100ml)

Minimum scale : 0.2% (Resolution 0.1%)

Size and weight : 4×4×21cm, 260g



HAND-HELD HONEY REFRACTOMETER

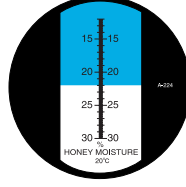
HHR-2N Cat.No. 2522

The honey refractometer is specially designed to determine the percentage of water contained in honey.

Scale range : 12.0 to 30.0% (water content in honey)

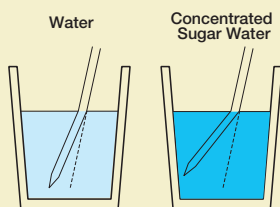
Minimum scale : 0.1%

Size and weight : 4×4×17cm, 260g



Light Refraction

When a straw is placed into a glass of water, the straw appears bent. Now if a straw is placed in a glass with water containing dissolved sugar, the straw should appear even more bent (see illustrations). This phenomenon is known as the principle of light refraction. Refractometers are measuring instruments which put this phenomenon of light refraction to practical use. They are based on the principle that as the density of a substance increases (e.g. when sugar is dissolved in water), its refractive index (how much the straw appears bent)

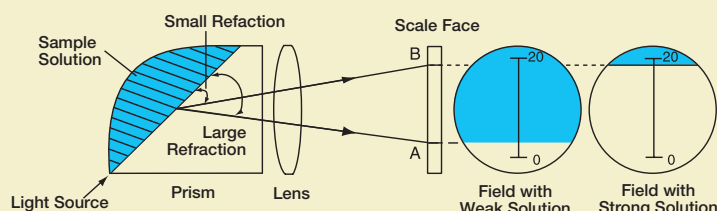


risks proportionately. Refractometers were devised by Dr. Ernst Abbe, a German/Austrian scientist in the early 20th century.

Principles of Refractometers

The detection system for hand-held refractometers (transparent system) is summarized below.

- (1) In the figure below the detection is done by utilizing the refractive phenomenon produced on the boundary of the prism and sample. The refractive index of the prism is much larger than that of the sample.
- (2) If the sample is thin, the angle of refraction is large (see line "A") because of the large difference in refractive index between the prism and the sample.
- (3) If the sample is thick, the angle of refraction is small (see line "B") because of the small difference in refractive index between the prism and the sample.



Which Refractometer to choose

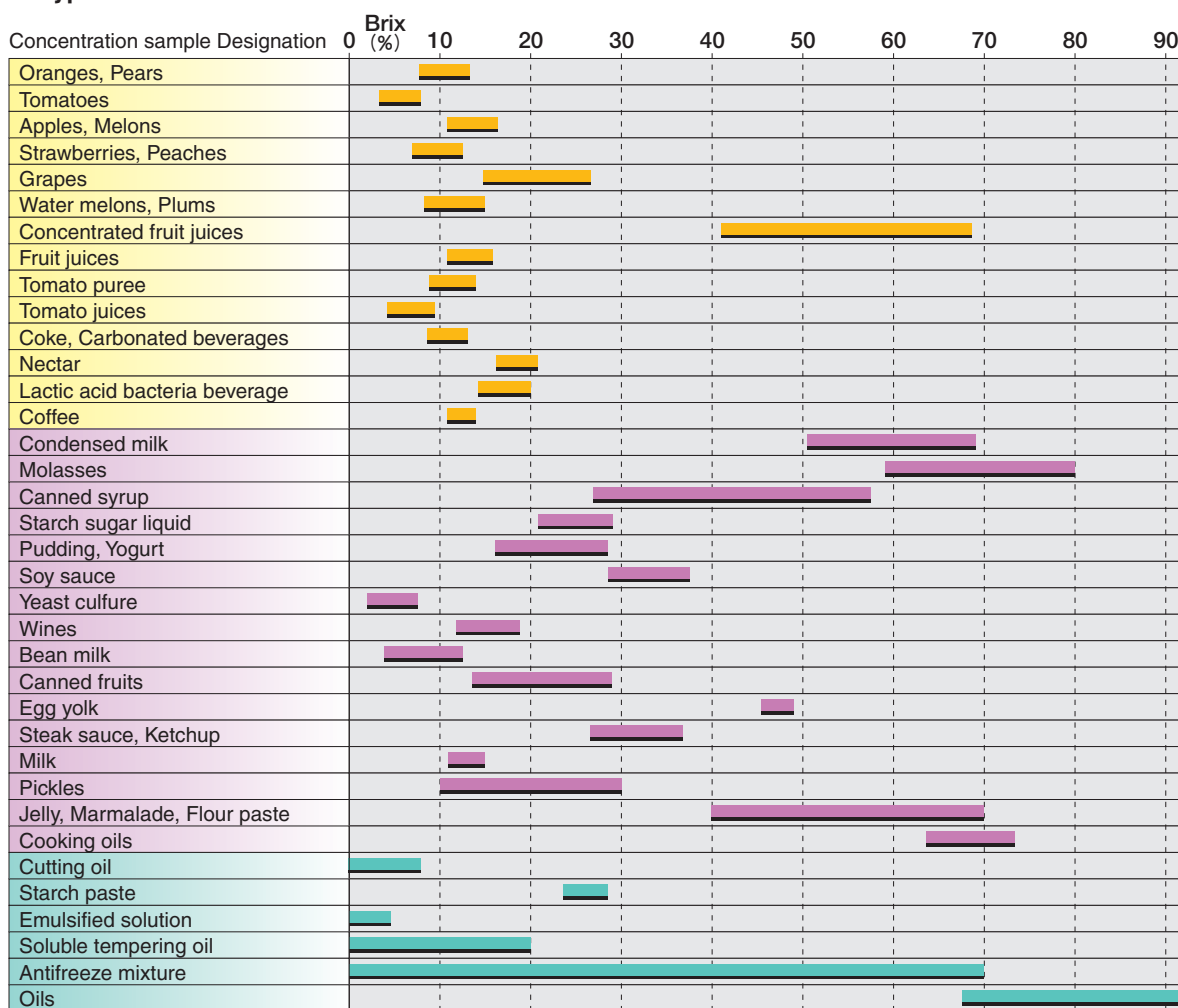
Please use as a guide with a chart of back page when you choose the refractometer.

Known sample's typical concentration

Fruits,
Fruit juices,
Soft Drinks

Food
Industry

Chemical
Industry

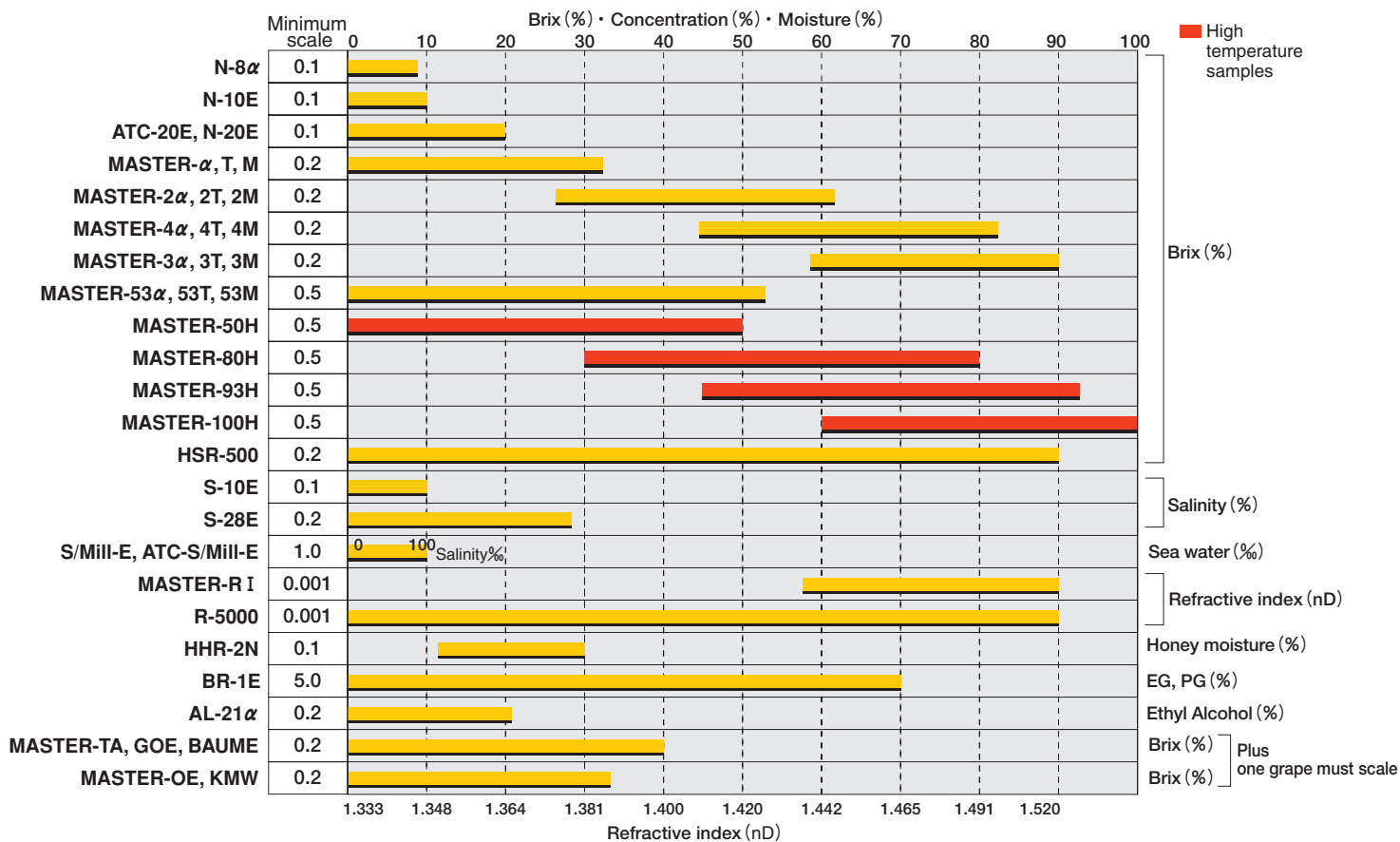


About the Brix (%) Scale

All Refractometers are designed to measure the refractive index of a solution. The Brix scale is based on a sucrose (sugar) and water solution. However, since most samples contain substances other than sugar - such as salts, minerals and proteins - the Brix percentage represents the total

concentration of all soluble solids in the sample. For certain samples, such as cutting oils and other industrial fluids, a conversion chart from the Brix percentage to the sample's total concentration may be necessary.

Measurement range for each model



EXPLANATION OF ICONS Icons for functions, specifications and scales have been added to this catalog.



- * Automatic Temperature Compensation
- * Compensation automatique de température
- * Automatische Temperaturkompensation
- * Compensazione automatica della temperatura
- * Compensación de automática de temperatura
- * 自動温度補償



- * External Light Interference
- * Interférence de la lumière externe
- * Äußere Lichteinflüsse
- * Interferenza della luce esterna
- * Luz de Interferencia Externa
- * 外部光線干渉



- * High temperature samples
- * Résistant à la chaleur
- * Hitzebeständig
- * Resistente al calore
- * Muestras De Alta Temperatura
- * 高温様品用



- * Calibration with exclusive standard liquid
- * Calibration 1 point sur solution standard
- * Kalibrierung mit speziellem Standard
- * Calibration 1 point sur solution standard
- * Calibración con patrones líquidos especiales
- * 使用專屬標準液歸零



- * Calibration with water
- * Calibration 1 point* sur eau distillée
- * Kalibrierung mit Wasser
- * Calibrazione con acqua
- * Calibración con agua
- * 用水歸零



- * Compact and easy to carry
- * Portable
- * Leicht und einfach zu tragen
- * Calibración con líquidos standard exclusivos
- * Compacto y fácil de llevar
- * 輕巧易於攜帶



- * Digital display
- * Affichage numérique
- * Digital Anzeige
- * Display digitale
- * Pantalla digital
- * 數字顯示



- * Battery operated
- * Alimentation par pile
- * Batteriebetrieb
- * Alimentazione a batteria
- * Funcionamiento con batería
- * 使用電池操作



- * Refractive index scale
- * Indice de réfraction
- * Skala fuer Refraktive Index
- * Indice di rifrazione
- * Escala de índice de refracción
- * 折射率刻度



- * Salt concentration scale
- * Teneur en sel
- * Skala fuer Salzkonzentration
- * Salinità%
- * Escala de concentración salina
- * 鹽分濃度刻度



- * Seawater scale
- * Spécial eau de mer
- * Seewasserskala
- * Salinità o/oo
- * Escala de agua de mar
- * 海水刻度



- * Wine scale
- * Spécial viticulture
- * Skala fuer Wein
- * Scale Enologia
- * Escala de vinos
- * 葡萄酒刻度

All ATAGO refractometers are designed and manufactured in Japan.

HACCP G.M.P. G.L.P.

ATAGO products are acknowledged by HACCP, G.M.P., and G.L.P. systems.

ATAGO CO., LTD.

Headquarters: 32-10, Honcho, Itabashi-ku, Tokyo 173-0001 Japan
TEL: 81-3-3964-6156 FAX: 81-3-3964-6137
overseas@atago.net http://www.atago.net/

ATAGO U.S.A., Inc.

12011 Bel-Red Road, Suite 101 Bellevue, WA 98005 U.S.A.
TEL: 1-425-637-2107 FAX: 1-425-637-2110
customerservice@atago-usa.com http://www.atago.net/

ATAGO INDIA Instruments Pvt. Ltd. (Sales Office)

A-501, Mangal Aarambh Business Centre, Near Kora Kendra, Off. & S.V. Road, Borivali (West), Mumbai-400 092 India
TEL: 91-22-2833-8038 / 8076 FAX: 91-22-2899-8164 customerservice@atago-india.com



* Specifications and appearance are subject to change without notice.