

# Wired Assemblies

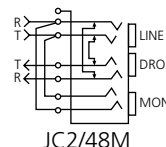
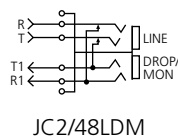
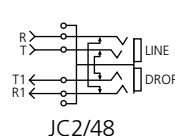
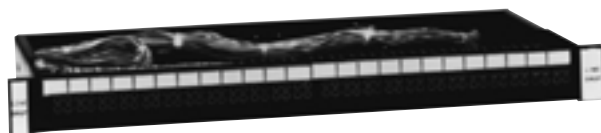
## Bantam Connectorized Jackfields

### 2-Wire Jackfield

#### Features and Benefits

The JC2 Bantam jackfield provides forty-eight or ninety-six 2-wire circuits, including monitor jacks. Circuit connections are made through standard 50-pin connectors mounted on the rear of the chassis. Line connectors are receptacles, drops are plugs.

- Front panel hinged for internal access
- Horizontal designation strips furnished with a white card and clear window for circuit identification
- Vertical designation cards printed with row functions

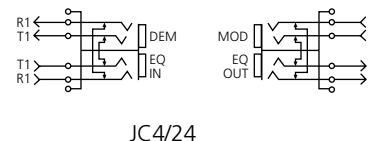
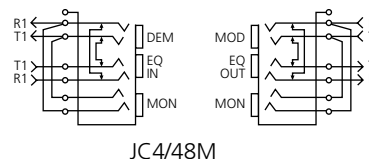


### 4-Wire Jackfield

#### Features and Benefits

The JC4 Bantam jackfield provides seventeen or twenty-four 4-wire circuits, including monitor jacks. Circuit connections are made through standard 50-pin connectors on the rear of the chassis. Equipment IN and MOD are receptacles; Equipment OUT and DEMOD are plugs.

- Front panel hinged for internal access
- Horizontal designation strips furnished with a white card and clear window for circuit identification
- Vertical designation cards printed with row functions

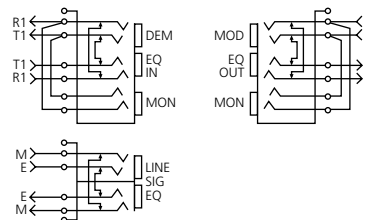
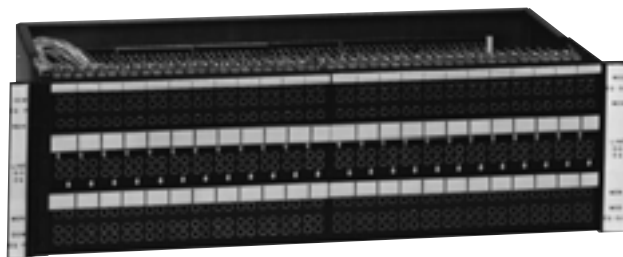


### 6-Wire Jackfield

#### Features and Benefits

The JC6 Bantam jackfield provides twelve, twenty four or forty-eight 6-wire circuits, consisting of DEM/MOD, EQ IN/ EQ OUT, MOD and Signal jacks. Circuit connections are made through standard 50-pin connectors on the rear of the chassis. Equipment IN and MOD are receptacles; Equipment OUT and DEMOD are plugs.

- Front panel hinged for internal access
- Horizontal designation strips furnished with a white card and clear window for circuit identification
- Vertical designation cards printed with row functions





# Wired Assemblies

## Bantam Connectorized Jackfields

### Ordering Information

Description	Dimensions (H x W x D)	# of Circuits	Catalog Number
<b>2-Wire</b>			
With primary Line/Drop or Signal E/M	1.75" x 19" x 8" (4.45 x 48.26 x 20.32 cm)	48	JC2/48
With primary Line/Drop or Signal E/M plus a third row of monitor jacks	1.75" x 19" x 8" (4.45 x 48.26 x 20.32 cm)	48	JC2/48M
With line and combination Drop/Monitor	1.75" x 19" x 8" (4.45 x 48.26 x 20.32 cm)	48	JC2/48LDM
<b>4-Wire</b>			
With Voice Frequency jacks, DEM/MOD, EQ IN/EQ OUT	1.75" x 19" x 8" (4.45 x 48.26 x 20.32 cm)	17	JC4/17
With Voice Frequency jacks, DEM/MOD, EQ IN/EQ OUT	1.75" x 19" x 8" (4.45 x 48.26 x 20.32 cm)	24	JC4/24
With Voice Frequency jacks, DEM/MOD, EQ IN/EQ OUT, monitor jacks	1.75" x 19" x 8" (4.45 x 48.26 x 20.32 cm)	24	JC4/24M
<b>6-Wire</b>			
With monitor and signal E/M jacks; signal jacks on right side of panel	1.75" x 19" x 8" (4.45 x 48.26 x 20.32 cm)	12	JC6/12M
With -48V LED E/M indicators	3.5" x 19" x 8" (8.90 x 48.26 x 20.32 cm)	24	JC6/24-48LED/EM
With monitor and signal E/M jacks	5.25" x 19" x 8" (13.35 x 48.26 x 20.32 cm)	48	JC6/48M
With monitor and signal E/M jacks; signal E/M leads separated and brought out to separate connectors	5.25" x 19" x 8" (13.35 x 48.26 x 20.32 cm)	48	JC6/48SC

For wired assemblies accessories such as patch cords, mounting hardware and plugs, see pages 38-52.