

Nikon

COOLPIX

Updating Camera Firmware

Windows

Thank you for choosing a Nikon product. This guide describes how to perform this firmware update.

If you are not confident that you can perform the update successfully, the update can be performed by a Nikon service representative.

See the camera manual for information on camera operations.

Important

The camera may be damaged if power is interrupted or camera controls are operated during the update. Do not turn the camera off, remove or disconnect the power source, or operate camera controls during the update. If the update is not completed successfully and the camera becomes inoperable, take the camera to a Nikon-authorized service representative for inspection.



Get ready

To upgrade the camera firmware, you will need:

- The camera

- A computer equipped with a card reader or card slot

- One of the following camera power sources:

 - An AC adapter


 - A battery or batteries with sufficient charge to complete the update

- A Nikon-approved memory card that has been formatted in the camera (note that all data on the memory card will be deleted when the card is formatted; before formatting the card, back up any data you wish to keep to a computer or other device)

2

Check the current camera firmware version

The menus displayed on your camera may differ from those shown here.

- 1 Turn the camera on.
- 2 Press the  to display the menus.
- 3 Select **Firmware version** in the setup menu.



- 4 The current firmware version will be displayed. Confirm that the firmware version is the correct version for this update.



"XXXX" is the camera name and "**" the firmware version.

- 5 Exit to the setup menu and turn the camera off.

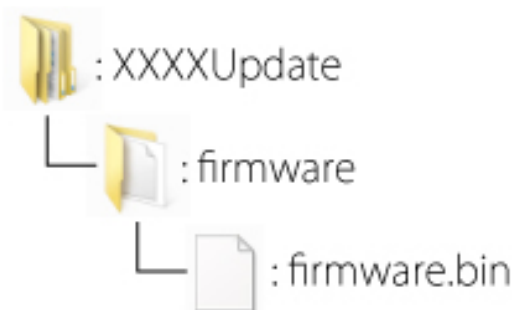
3

Download and extract the new firmware

- 1** Create a new folder on your computer.
- 2** Right-click the **I agree - Begin download** link on the download site and select **Save Target As**. Save the file to the folder created in Step 3-1.
- 3** Open the folder created in Step 3-1 and double-click the downloaded file ("F-XXXX-V**W.exe", where "XXXX" is the camera name and "**" the firmware version) to extract the firmware to a sub-folder in the new folder.



The resulting file and folder hierarchy is shown below:



4

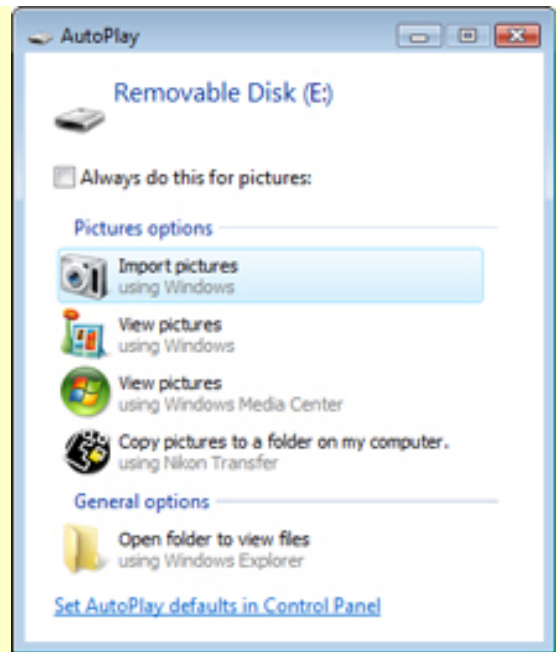
Copy the firmware to the memory card

The firmware can be copied to the camera memory card using a computer equipped with a card reader or card slot.

- 1** Insert a formatted memory card in the card reader or card slot. If Nikon Transfer or ViewNX 2 is installed, Nikon Transfer or Nikon Transfer 2 may start automatically; exit the application before proceeding.

Windows 7/Windows Vista

Under Windows 7/Windows Vista, an AutoPlay dialog may be displayed. Click



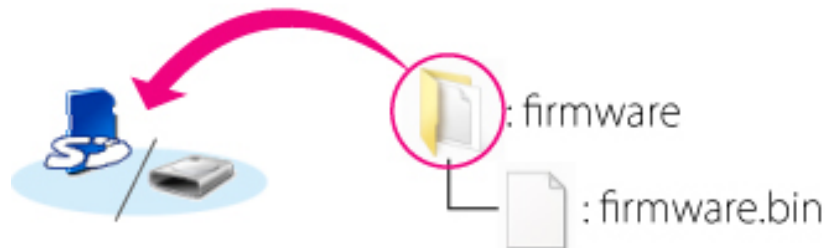
Windows XP

Under Windows XP, a Removable Disk dialog may be displayed. Click **Cancel**.



2

Copy the "firmware" folder to the memory card.



When copying is complete, open the "firmware" folder on the memory card and confirm that it contains the file "firmware.bin".

Important

Be sure to copy the "firmware" folder to the root directory of the memory card. The camera will not recognize the new firmware if it is placed in a folder under the root directory.

- 3 If your computer shows the memory card as a removable disk, right-click the removable disk and select **Eject** from the menu that appears. Remove the memory card from the card reader or card slot.

5


Update the camera firmware

The menus displayed on your camera may differ from those shown here.

During the update, do not:

- Remove the memory card
- Turn the camera off
- Unplug or disconnect the AC adapter
- Remove the battery
- Subject the camera to powerful electromagnetic noise

Any of the above actions could cause the camera to become inoperable.

- 1 Insert the memory card containing the firmware into the camera memory card slot.
- 2 Turn the camera on.
- 3 Press the  to display the menus.
- 4 Select **Firmware version** in the setup menu.

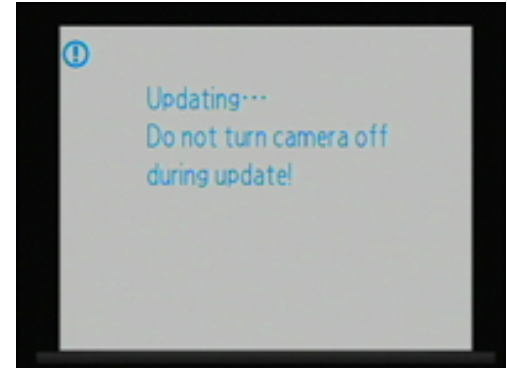


5

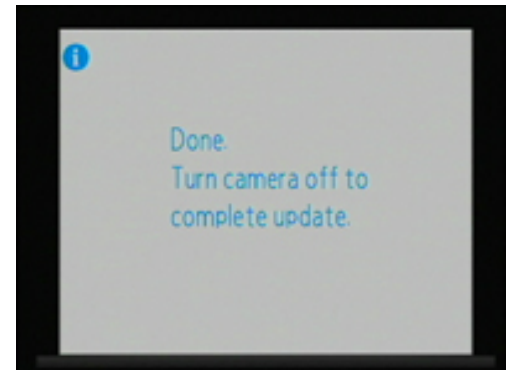
A firmware update dialog will be displayed.
Select **Yes** to begin the update.



The message shown at right will be displayed while the update is in progress.



The message shown at right will be displayed when the update is complete.



6

Confirm that the update was completed successfully.

6-1. Turn the camera off and remove the memory card.

6-2. Check the camera firmware version as described in Step 2, "Check the current camera firmware version".

6-3. If the updated version is displayed, the update was successful.



"XXXX" is the camera name and "***" the firmware version.

If the update was not successful, contact a Nikon service representative.

7

Format the memory card in the camera.

This completes the firmware update.