

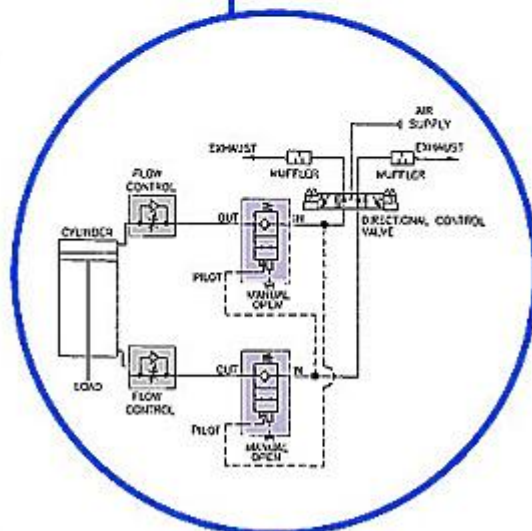
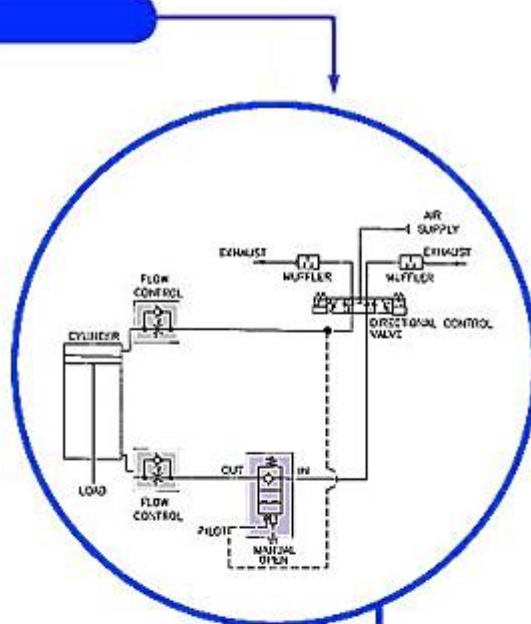
NU-CHECK® VALVES

The Nu-Check® Valve, designed specifically for pneumatics, is a patented ALADCO® product. It is the only check valve on the market with both manual and pilot release capabilities. The unique bubble - tight seal keeps devices in "checked" position. If pressure loss or fluctuation should occur, the valve prevents drifting. To release the seal, depress the manual override button or operate the pilot.

Click on diagrams at right to enlarge

Features

- Prevents load drift
- Provides rapid stopping of load
- Designed for non-lubricated systems
- Operating pressure 15 - 150 psi and temperature 30 - 150° F
- Cracking pressure 2 - 4 psi
- Flow capacity 0.2 Cv to 4.0 Cv
- Made of high strength, lightweight, anodized aluminum alloy
- Exceeds A.N.S.I. Class VI Leak Standard (Bubble Tight)
- Superior, self - cleaning ball seal provides long product life, over 100 million cycles in test.
- All valves are manufactured tamper resistant and require no maintenance.
- Patented and made in the USA



DIMENSIONAL DATA

SPECIFICATIONS

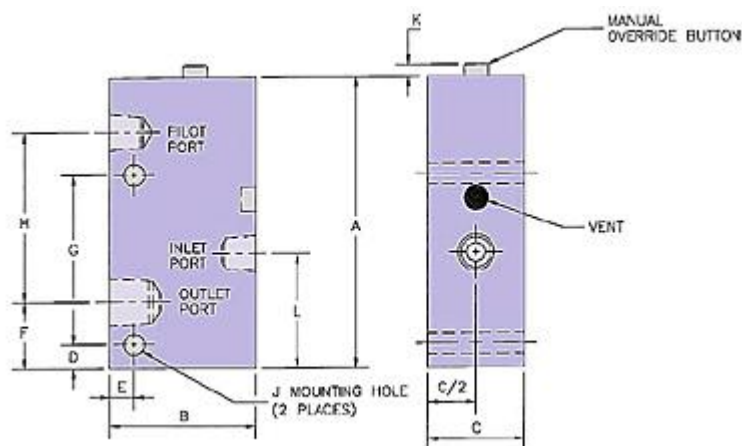
Port Size	A	B	C	D	E	F	G	H	J	K	L	Pilot Port	Cv	Weight AL	Weight SS	Pilot Ratio
1/4"	3.83	2.00	1.50	0.25	0.38	0.85	2.38	2.34	0.28	0.22	1.50	1/4"	1.7	1.25		4:1
3/8"	3.83	2.50	1.50	0.25	0.38	0.85	2.38	2.34	0.28	0.22	1.50	1/4"	1.7	1.50		4:1
1/2"	3.83	2.50	1.50	0.25	0.38	0.85	2.38	2.34	0.28	0.22	1.50	1/4"	1.7	1.50		4:1
3/4"	5.55	3.00	2.00	2.00	0.42	1.04	2.00	3.88	0.28	0.20	2.58	1/4"	4.0	3.00		3:1
1"	5.55	3.00	2.00	2.00	0.42	1.04	2.00	3.88	0.28	0.20	2.51	1/4"	4.0	3.00		3:1

* A-L All dimensions in inches

NOTE: 10-32 and 1/8" port sizes no longer available

Clean-Check valves are replacing those port sizes

[Click here to go to Clean-Check page](#)



[Click here for CAD Files, Schematics, and Technical Information Files](#)

ORDERING INFORMATION

To order please indicate your part number{s} by formulating the desired style number for each of the corresponding areas from the list below. See the sample part number at right.

Button Style	Port Size	Seal Type	Options
30	25	01	(if required)

Button Style:

Style	Description
30	Pilot Operated with Override Button
31	Pilot Operated with Flush Override Button
32	Pilot Operated with No Override Button

Port Size:

Style	Description
25	1/4"NPTF
38	3/8"NPTF
50	1/2"NPTF
75	3/4"NPTF
01	1" NPTF

Seal Type:

Style	Description	Status
01	Buna N Seals — (Temperature range 30 to 150° F)	In-Stock
02	Viton Seals — (Temperature range -15 to 400°F)	Limited Stock

Options:

Style	Description	Status
BSPP	British Standard Parallel Ports G (Rp full form)	Limited Stock
HP	High Pressure, 350 psi rating	In-Stock
NCP	No Cracking Pressure (0 psi cracking pressure)	In-Stock
SS	Stainless Steel, all parts	Limited Stock
VAC	Vacuum Application	In-Stock

* Options can be combined; please call with any questions

[Click Here for Current Pricing](#)



**ALADCO Provides Valve Solutions
For Your Pneumatic Needs.**