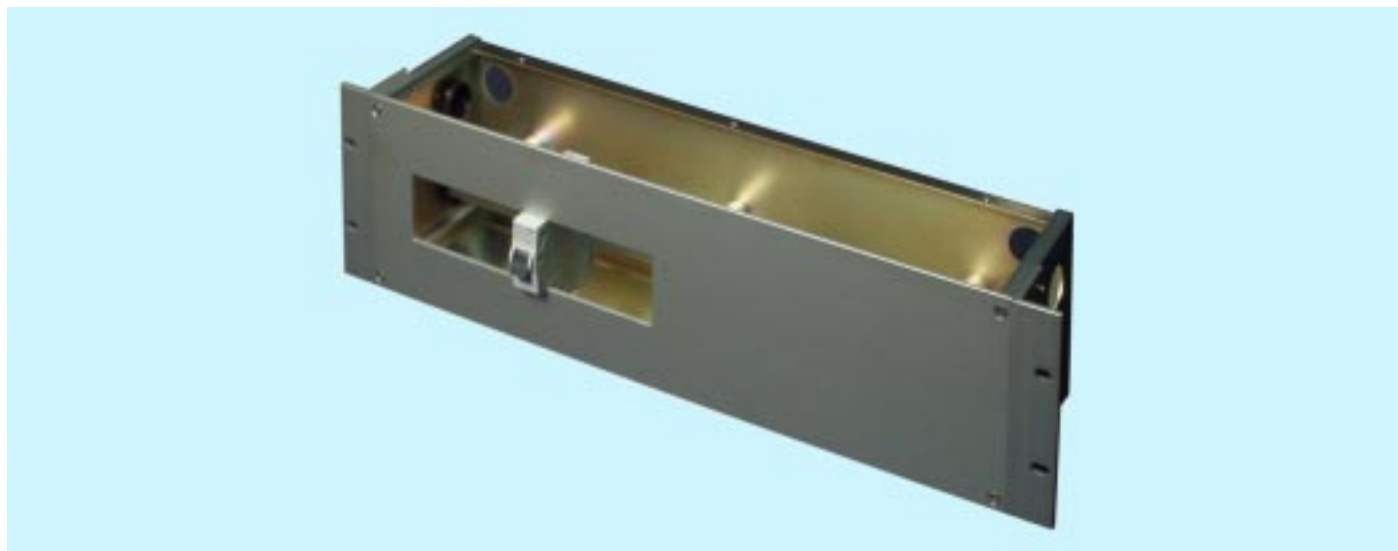


Date - 31th May, 2000

e-mail = sales@casa.co.nz

Ref - DCDM-3U.FRP

## DC Distribution Module - 3 Unit



Illustrated Model = DCDM-3U-100-DIN380(ALS) (picture file = dcdm-35p.wmf)

### INTRODUCTION :-

CASA's Direct Current DISTRIBUTION MODULE has been designed to provide low to medium current, 12/24/48 Volt DC power distribution for fixed wired 19" Rack Mounted Equipments through a series of 1" dia holes in the back and sides of the module. The basic sizing (3 Rack Units x 100mm deep) has been chosen to accommodate industry standard DIN Rail mounted circuit protection and DIN standard input and output cable termination.





Variations on the basic design can accommodate multipole terminal strips, connectors, status indicators, voltage and current or hour metering, RFI/EMI filters etc

**CASA's Design Philosophy:-** Compatibility, Adaptability, Simplicity and Acceptability achieves sound engineering, cost economy and aesthetics.

### FEATURES:-

- 1) **DIN Rail** is used to mount all internal circuit protection and wire termination using internationally available devices
- 2) **Standard 19" sub-rack enclosure** fits into any standard 19" rack cabinets or frames etc.
- 3) **REMOVABLE Front panel** allows quick access to wiring, test-points etc. during installation and maintenance
- 4) **MODULAR Design** permits SPECIALS, including alternative cable entry and exit holes, other finishes, electrical and/or mechanical variants etc. which may all be produced economically even in small quantities.
- 5) **Custom design** (CKD or pre-assembled units) can be produced to meet special requirements including other fixing options. Please enquire giving details of desired features and quantities.
- 6) **Accessories** including cable clamps, grommets and blanking caps are available from CASA.

### Specification Details:-

	<b>Panel Width</b> (Standard overall width of front & rear panels)	<b>17" (431.8mm) bare</b> <b>19" with rack brackets</b>
	<b>Depth</b> (behind Front Panel excluding connectors, cables etc.)	<b>50~500mm</b> (in 50mm increments)
	<b>Panel Height</b> (Standard rack units. See CASA Rack Module data sheet)	<b>132.5mm (3 rack units)</b>
	<b>Input Rating</b> (Current ratings are limited by source connection)	<b>5-50 Amps (typical)</b>
	<b>Output Rating</b> (Current ratings are limited by connector type & source)	<b>5-50 Amps (typical)</b>
	<b>Finishes</b> (Standard)	<b>Anodized (Aluminum Parts)</b> <b>Gold passivated Zinc</b>
	(Other surface finished and colours to order)	
	<b>Fixing:</b> (wall and other options to order)	<b>Standard 19" Rack Centres</b>
	<b>Weight:</b> (depends upon terminal types and other options)	<b>2Kg (approx)</b>

### Part Number:- DCDM-xU-d-DINy(special adder/suffix)

Please compose a Part Number according to this system and use on your official order.

<b>DCDM</b>	Prefix to indicate "Direct Current Distribution Module".
<b>xU-</b>	"Height" in RACK Units (multiples of 44.45 millimeters).
<b>d-</b>	Depth in mm (internal dimension inside the module front/back panels)
<b>y-</b>	The fitted length of <b>DIN</b> rail installed in the module
<b>(-----)</b>	Special adder/suffix gives detail of input/output connectors or drawings.