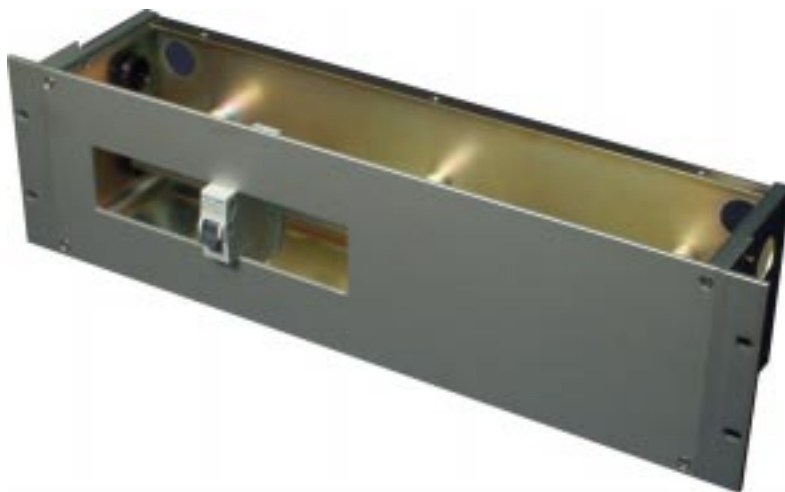


Date - 31th May, 2000

e-mail = sales@casa.co.nz

Ref - DCDM-3UW.FRP

DC Distribution Module - 3 Unit



INTRODUCTION :-

Illustrated Model = DCDM-3U-100-DIN380(ALS) (picture file = dcdm-35w.wmf)

Direct Current DISTRIBUTION MODULE has been designed to provide low to medium current, 12/24/48 Volt DC power distribution for fixed wired 19" Rack Mounted Equipments. The basic sizing (3 Rack Units x 150mm deep) has been chosen to accommodate standard DIN Rail mounted circuit protection and industry standard input and output cable termination.





Variations on the basic design can accommodate multipole terminal strips, connectors, status indicators, voltage and current or hour metering, RFI/EMI filters etc.

CASA's Design Philosophy:- Compatibility, Adaptability, Simplicity and Acceptability achieves sound Engineering, Cost Economy and Aesthetics.

FEATURES:-

- 1) **DIN Rail** is used to mount all internal circuit protection and wire termination using internationally available devices
- 2) **Standard 19" sub-rack enclosure** fits into any standard 19" rack cabinets or frames etc.
- 3) **REMOVABLE Front panel** allows quick access to wiring, test-points etc. during installation and maintenance
- 4) **MODULAR Design** permits SPECIALS, including alternative finishes and electrical or mechanical variants can be produced economically even in small quantities.
- 5) **Custom** design can be undertaken to meet special requirements including other fixing options. Please enquire giving details of features and quantities.

Specification Details:-

	Panel Width (Standard overall width of front & rear panels) :-	17" (431.8mm) bare 19" (with rack brackets)
	Depth (behind Front Panel excluding connectors, cables etc.)	50~500mm (in 50mm increments)
	Panel Height (Standard rack units. See CASA Rack Module data	132.5mm (3 rack units)
	Input Rating (Current ratings are limited by source connection):-	5-50 Amps (typical)
	Output Rating (Current ratings are limited by connector type &	5-50 Amps (typical)
	Finishes (Standard):-	Anodized (Aluminum Parts) Gold passivated Zinc
	Fixing:-	Standard 19" Rack Centres
	Weight:-	2Kg (approx)

Part Number:- DCDM-xxU-d-DINy(special adder/suffix)

Please compose a Part Number according to this system and use on your official order.

DCDM
xxU-
d-
yy-
(-----)

Prefix to indicate "Direct Current Distribution Module".
"HEIGHT" in RACK Units (multiples of 44.45 millimeters).
Depth in mm (internal dimension inside the module front/back panels)
The fitted length of DIN rail installed in the module
Special adder/suffix gives detail of Input/Output connectors or Drawings.