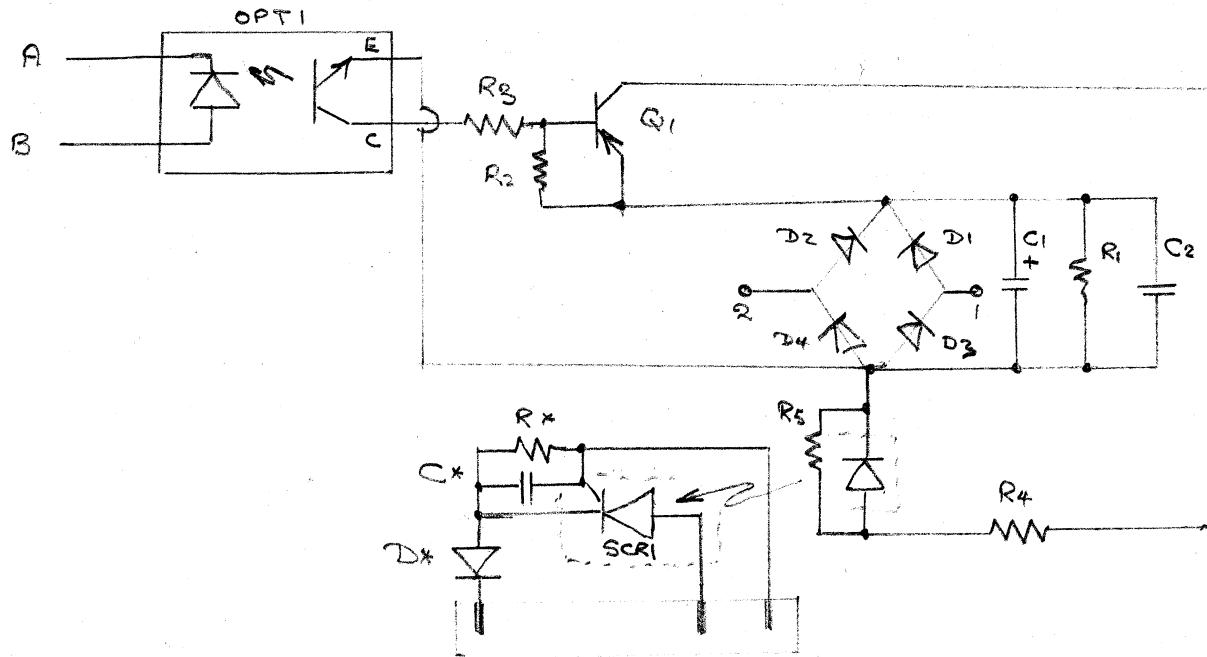


## REG2 A/W



Q1	2N2907A
OPT1	CNY 65
SCR1	H11C6
R1	27K
R2	10K
R3	4K7
R4	680
R5	10K
R*	27K
C1	100μ 35V
C2	100n 50V
C*	47n 50
D*	1N4007

Nominal 20V DC Across  
C1, C2.

~15V AC Across 1, 2.

TRIGGER CURRENT A ~ B

~8mA TO OPERATE Q1

75mA MAXIMUM.

SCR1 400V @ 5A Surge

As ATTACHED To  
24D10-17  
SSR MODULES.

# HD CAMERA

## HD CAMERA



## Instruction



**Caution**  
**RISK OF ELECTRIC SHOCK**  
**DO NOT OPEN.**



### Be careful:

To reduce the risk of electric shock, do not open the camera's shell (or back cover); parts of the operation of the user are in the camera's surface, request to help qualified professional maintenance.

### Note:

- ◆ Do not use hand CCD or contact lens;
- ◆ Don't let the camera be by the onslaught;
- ◆ Please use the stabilized voltage supply (DC12V);
- ◆ Don't let the camera directly against the strong light;
- ◆ Avoid the instability of local installation (shaking, moisture; heat, cold, etc.);
- ◆ Avoid using, outside the temperature of the following conditions: temperature of 20°C ~ 50°C, humidity: less than 85%;
- ◆ Any installation and assembly issues, please contact the sales staff.

### Super function:

- ★ Powerful digital white balance function;
- ★ Humanized design, use more convenient;
- ★ Super electronic shutter function, automatic gain control;
- ★ Digital noise reduction technology, with high quality of signal to noise ratio;
- ★ With high quality aperture lens, ensure the image effect;
- ★ High precision optical transparent cover, transmittance increased by 40%;
- ★ Internal zinc alloy assembly, good heat dissipation, solid and shock, long service life;
- ★ Super light sensitivity, in the very low light conditions can also capture high quality and not produce images;
- ★ Progressive dynamic scanning CCD, can be obtained in the harsh environment of high resolution images.

According to the company's technical investigation, the vast majority of failure is not the camera itself fault. In order to your higher work efficiency, please you before the camera repair, check the following items are using the correct, if cannot function properly, please contact the appropriate vendors or corresponding authorized maintenance personnel.

#### 1. There is no image on the monitor

Are all connected devices connected to the power supply?

Voltage is correct?

Are the positive and negative polarity of the equipment used in the DC power supply correct?

The signal connection cable is used to connect the cable, the signal output to the monitor's route is open, short circuit, connection BNC is good?

Monitor brightness adjustment is normal?

Is there any object in front of the camera lens?

#### 2. Image is not clear

Is the monitor correct? After the focal position is correctly adjusted?

Is the focal length of the lens adjusted correctly?

Is the lens surface clean?

If there is dust and fingers printed in the lens, the image quality will be poor, please use a soft cloth clean lens.

#### 3. Image interference

If there is a strong magnetic field near the camera?

Is the ground wire good?

Correct wiring is correct.

#### 4. Image distortion or geometric distortion

General can adjust the line synchronization can be;

If it is night vision infrared light open and cameras to check the voltage and current of power is normal, check all cable or other connecting the characteristic impedance of the equipment is not 75Ω?

#### 5. The picture appeared in several black bar in vertical direction

In this case, the power supply voltage of the DC power supply voltage is too much, should take good performance of the DC voltage regulator current.

#### 6. The vertical bars of multi-channel images

This may be the cause of radiation caused by the characteristics of the external video line or the device with the camera does not match the camera, should pay attention to the characteristics of the selected video line and other connection processing equipment is 75Ω?

#### 7. The big picture

Camera internal circuit board is not bad;

Video amplitude output is not enough;

Environmental light intensity is not enough;

Whether the cable is in contact with the optical fiber or the short circuit;

The monitor itself is better than a bad signal to noise.

Dear customer, thank you for your use, in order to strengthen the customer service, a special order of the warranty regulations, please read and provide your valuable advice and suggestions.

1. this product is entitled to 12 months of free warranty service from the date of sale. After the warranty period, the company will charge the cost of parts for the product failure.

2. repair products, please properly packed and shipped, transported such loss or damage, the company will not be responsible for.

3. in the event of a free warranty period, the company has the right to refuse to serve or to charge fees, service fees and charges:

(1) Failure or damage caused by improper use of the user;

(2) Voltage or improper installation lead to burnout;

(3) Self repair, demolition of the failure and the occurrence of failure;

(4) Product quality assurance label;

(5) Unable to produce a warranty card or product name, serial number and dealer unknown.

4. Please read the product specification carefully before installing the product.

5. Manufacturers to retain the appearance of the design and function of the upgrade of the rights and interests, products if there is a change, without notice, please forgive.

## IP Digital HD network camera

System	The design of embedded RTOS,dual 32 bit DSP(T1 or HI, Da Vinci HASS)pure hardware compression,watchdog					
Image Sensor	1/4 ", 1/3", 1/2.5 "CMOS sensor; support M12M14ICS interface lens; support for the filter, support for day and night conversion, support for photosensitive resistance signal linkage					
Pixel	100W	130W	200W	300W	400W	500W
Video Compression algorithm	H.264/265 video encoding, supports dual stream, AVI format; support for 0.1M~6Mbps code stream					
Preview video resolution	1280X 720/1280X 960/1920X 1080/2592X 1960					
Minimum delay	0.11 seconds					
Lens mount	CS					
Lens focal length	2.8~16MM optional					
Minimum Illumination	0.1Lux/F1.2(color) 0Lux (black and white)					
Video frame rate	25 frames/second or 30 frames/sec					
Communication interface	1 RJ45 Ethernet interface, 10/100M adaptive					
Support protocol	Support RTSP/FTP/PPPOE/DHCP/DDNS/NTTP/UPnP or TCP, UDP, IP, HTTP,SMTP, DHCP,FTP,DNS,ARP, ICMP,POP3,NTP and other network protocols					
Back-end video mode	Hybrid DVR card, hybrid embedded DVR, PDVR, PC, a million HD system card, IP-SAN					
Power input	DC 12V					
Power consumption	Less than 2W					
Operating temperature	-10℃~50℃ (14 ℉~122 ℉)					
Operating Humidity	Less than 85%					

## HD-CVI-TVI Coaxial camera

Image Sensor	1/3" Mega Pixel CMOS SONY					
Effective pixels	1280(H) X 720(V)			1920(H) X 1080(V)		
Lens focal length	2.8~16MM optional					
Pixel	100W	130W	200W	300W	400W	500W
Minimum Illumination	0.1Lux/F1.2 (color) 0Lux (black and white)(IR ON)					
Video standard	Follow the HDCVI and CVBS standards					
Day and night conversion mode	ICR Double filter automatic switching					
Video frame rate	1920X 1080@25fps; 1920X 1080@30fps; 1280X 720@25 fps; 1280X 720@30fps; 1280X 720@50 fps; 1280X 720@60fps;					
Maximum transmission distance	Using twisted pair or 75-3 above video transmission, distance can reach 500 meters					
S/N Ratio	Greater than 52dB					
Back light compensation	ON/OFF					
Synchronization	Internal synchronization					
White balance	Automatic					
Video Output	1 way HDCVI HD BNC output					
Power input	DC 12V					
Power consumption	Less than 2W					
Operating temperature	-10℃~50℃ (14 ℉~122 ℉)					
Operating Humidity	Less than 85%					

## AHD Million HD video camera

Image Sensor	1/3" Mega Pixel IR-CUI CMOS SONY				
Effective pixels	1280(H) X 720 (V)			1920(H) X 1080 (V)	
Lens focal length	2.8~16MM optional				
Pixel	100W	130W		200W	
Minimum Illumination	0.1 Lux/F1.2(color) 0Lux (black and white)(IR ON)				
Video standard	Follow the AHD standards				
Day and night conversion mode	ICR Double filter automatic switching				
Video frame rate	1280X 720@25fps; 1280X 720@50fps;	1280X 720@50fps; 1280X 720@60fps;	1920X 1080@25fps; 1920X 1080@30fps;		
Maximum transmission distance	Using twisted pair or 75-3 above video transmission, distance can reach 500 meters				
Image sensor	100 million pixels	130 million pixels		200 million pixels	
Infrared distance	20M	30M	50M	80M	100M
S/N Ratio	Greater than 52dB				
Back light compensation	ON/OFF				
Synchronization	Internal synchronization				
White balance	Automatic				
Video Output	1 way AHD HD BNC output				
Power input	DC 12V				
Power consumption	Less than 2W				
Operating temperature	-10℃~50℃ (-14 ℉~122 ℉)				
Operating Humidity	Less than 85%				

## Analog HD camera

Image Sensor	1/3" Mega Pixel CMOS SONY				
Signal system	PAL/ NTSC system				
Horizontal articulation	420TVL/480TVL/540TVL/600TVL/650TVL/700TVL/750TVL/800TVL/900TVL/1000TVL/1200TVL				
Lens focal length	2.8~16MM optional				
Video Output	1.0VP-P/75Ω				
Lens size	Fixed /manual /optional				
White balance	Automatic white balance ON/OFF				
S/N Ratio	≥48db				
Electronic shutter	PAL: 1/151/10000s NTSC: 1/60/10000s				
Minimum illumination	0.01LUX/F1.2	0.1LUX/F1.2	0.001LUX/F1.2	0.1LUX/F1.2	0.001LUX/F1.2
Gain control	Automatic gain ON/OFF				
Back light compensation	Manual/automatic optional				
Power input	DC12V				
Operating temperature	-10℃~50℃ (14℉~122℉)				
Infrared distance	20M	30M	50M	80M	100M

## Warranty card

User name			
User address			
Contact phone		Zip code	
Purchase location		Purchase time	
Purchase price		Sales order	
Name and specifications		Body number	
Dealer signature and seal		User signature	