

# U.S. INDUSTRIAL TOOL INSTALLATION AND SERVICE PARTS LISTING PORTABLE PNEUMATIC RIVET SQUEEZER ALLIGATOR & C-TYPE SERIES US114A, US114TA, US114C, US114TC, US114TC-98

MODEL NO.	DETAILS REQUIRED FOR TOOL BY MODEL #					
	DETAIL A	DETAIL B	DETAIL C	DETAIL D	DETAIL E	DETAIL F
US114A (INCLUDES ALL JAW LENGTHS)	X			X	X	
US114TA (INCLUDES ALL JAW LENGTHS)		X		X	X	
US114C	X		X		X	
US114TC		X	X		X	
US114TC-98		X	X			X

Always comply with:

- 1) General Industry Safety & Health Regulations, Part 1910, SHA 2206, available from Superintendent of Documents, Government Printing Office, Washington, DC 20402.
- 2) Safety Code for Air Portable Tools - ANSIB 186.1 available from American National Standards Institute, Inc., 1430 Broadway, New York, NY 10018.

Care of your new tool:

- 1) Tools shall be used only for purposes intended in their design (refer to U.S. Industrial catalog).
- 2) The efficiency and life of this tool depends on the proper supply of clean, dry, lubricated air at 90 lbs. P.S.I. pressure. The use of lower pressures will result in loss of tool power. Use of an air line filter, regulator and lubricator is recommended. Air supply hose should have a minimum of 1/4" I.D. If extension hose is necessary, use a 3/8" to 1/2" I.D. hose to insure proper S.C.F.M. flow to tool.
- 3) Lubrication of the tool is vital to good operation. If proper air line lubrication is unavailable, squirt on a daily basis several drops of oil into the air inlet before using. U.S. Industrial Air Tool Oil #A1038 is specially formulated with a rust inhibitor for proper lubrication of internal parts. As an alternate a turbine or spindle grade oil with a viscosity of 100-150 SUS is acceptable. Bearing assemblies and main piston bores should be lubricated every 160 hours of operation with Permatex Synthetic Grease with Teflon or equal.
- 4) If unusual sounds or vibration are produced, repair immediately.
- 5) A wide range of C-Yoke and alligator jaws of varying geometry's are available for applications where standard tooling will not provide adequate access. Request supplemental catalog listing of the many stocked designs. Special application design and manufacture is available - submit details of your assembly along with fastener sizes, material grades, and approximate quality of fasteners to be installed per hour/day.
- 6) Various non-standard length set holders are available for all series C-type squeezers.
- 7) To achieve optimal force output when setting up tool, be sure that your fastener plus rivet sets don't exceed the total thickness available of tool gap (closed height) when tool is activated. Otherwise tool will not produce the necessary force to compress fastener.
- 8) Preventative maintenance consisting of disassembly of tool, cleaning and inspection of parts for wear should be done on regular intervals by experienced maintenance personnel or can be returned to U.S. Industrial Tool or an authorized U.S. Industrial Tool Distributor for service.

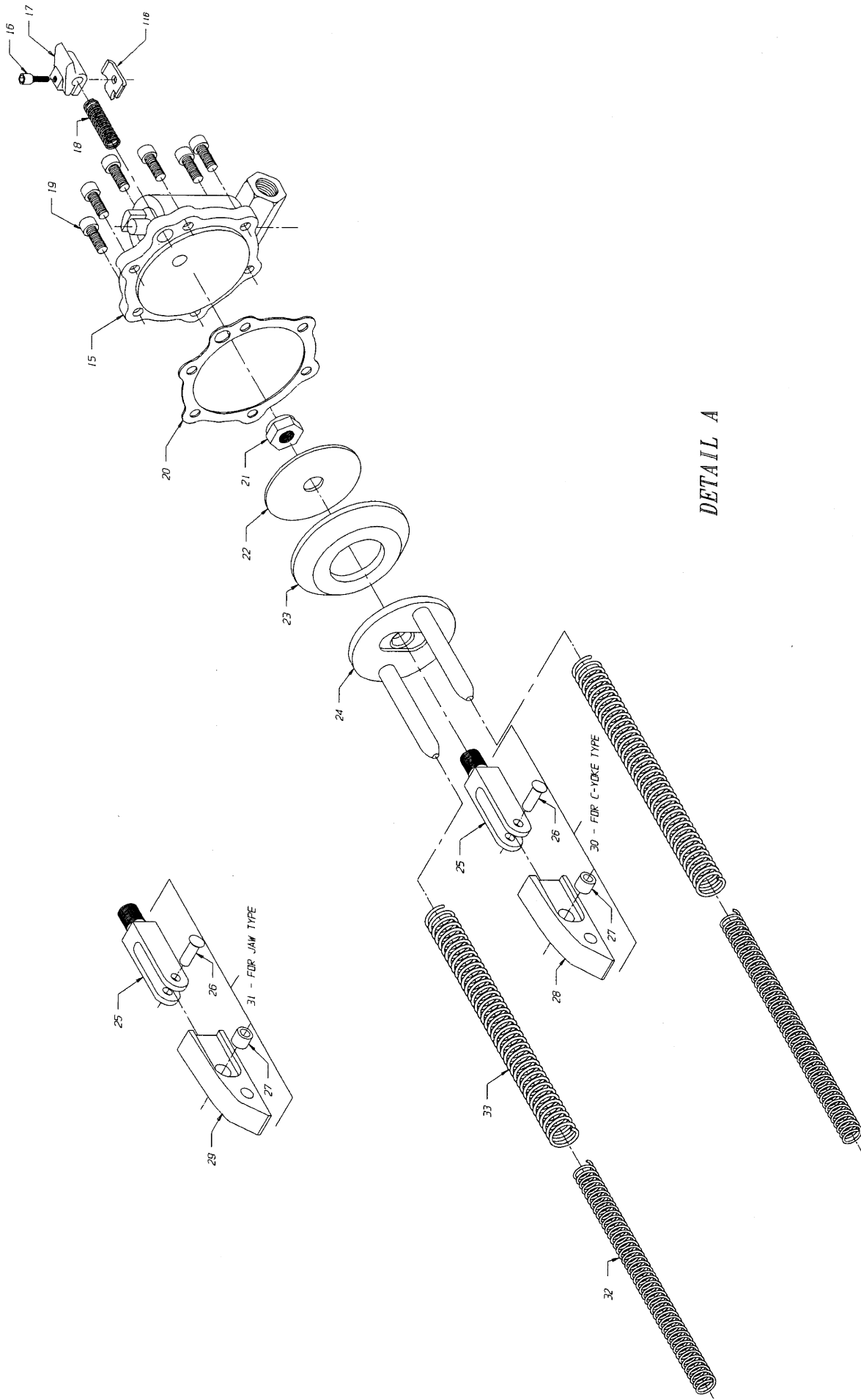
5/04



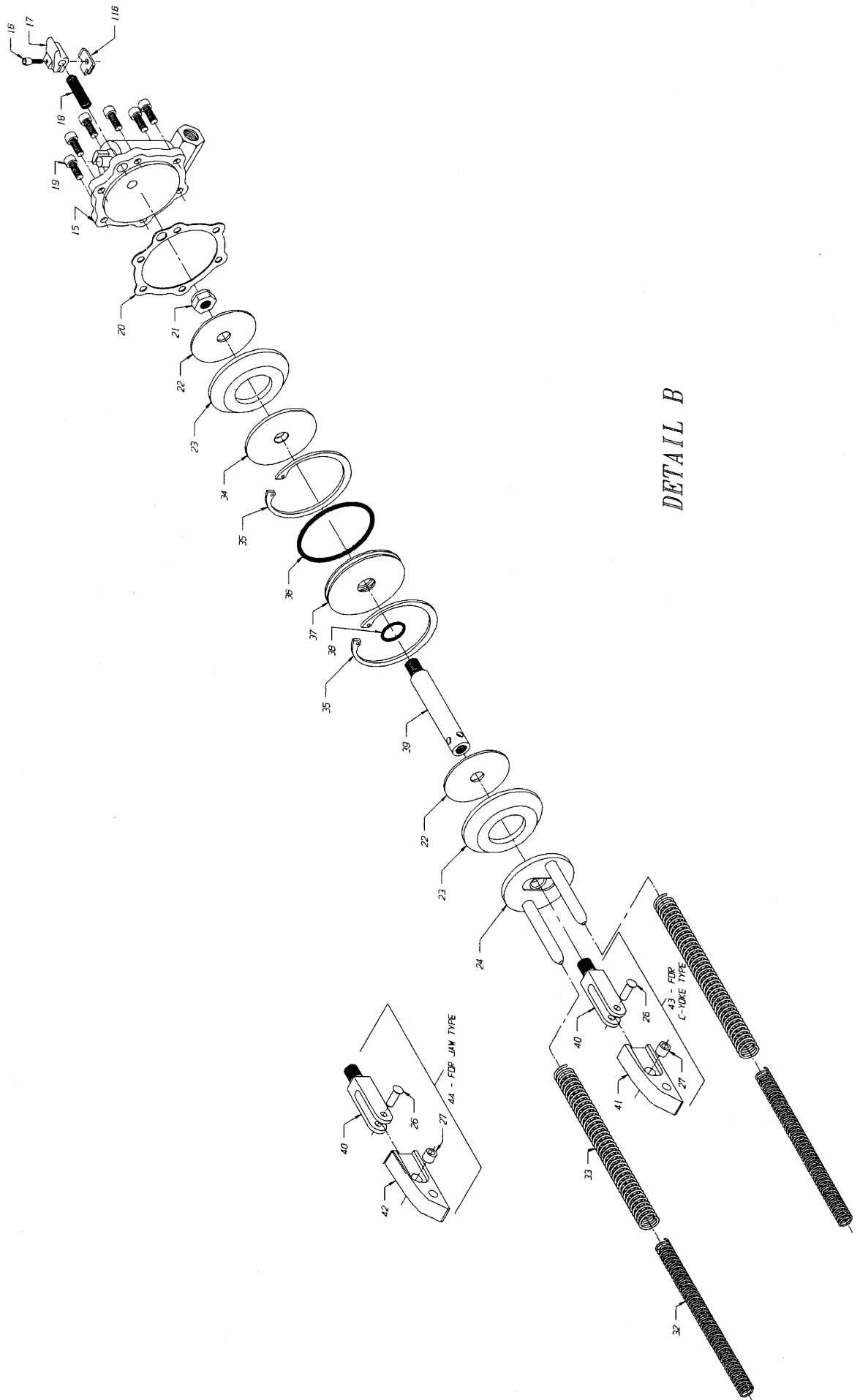
A  Churchill Aerospace Company

**CALL TOLL FREE**  
**800.521.7394 • Fax 310.464.8880**  
**www.ustool.com**

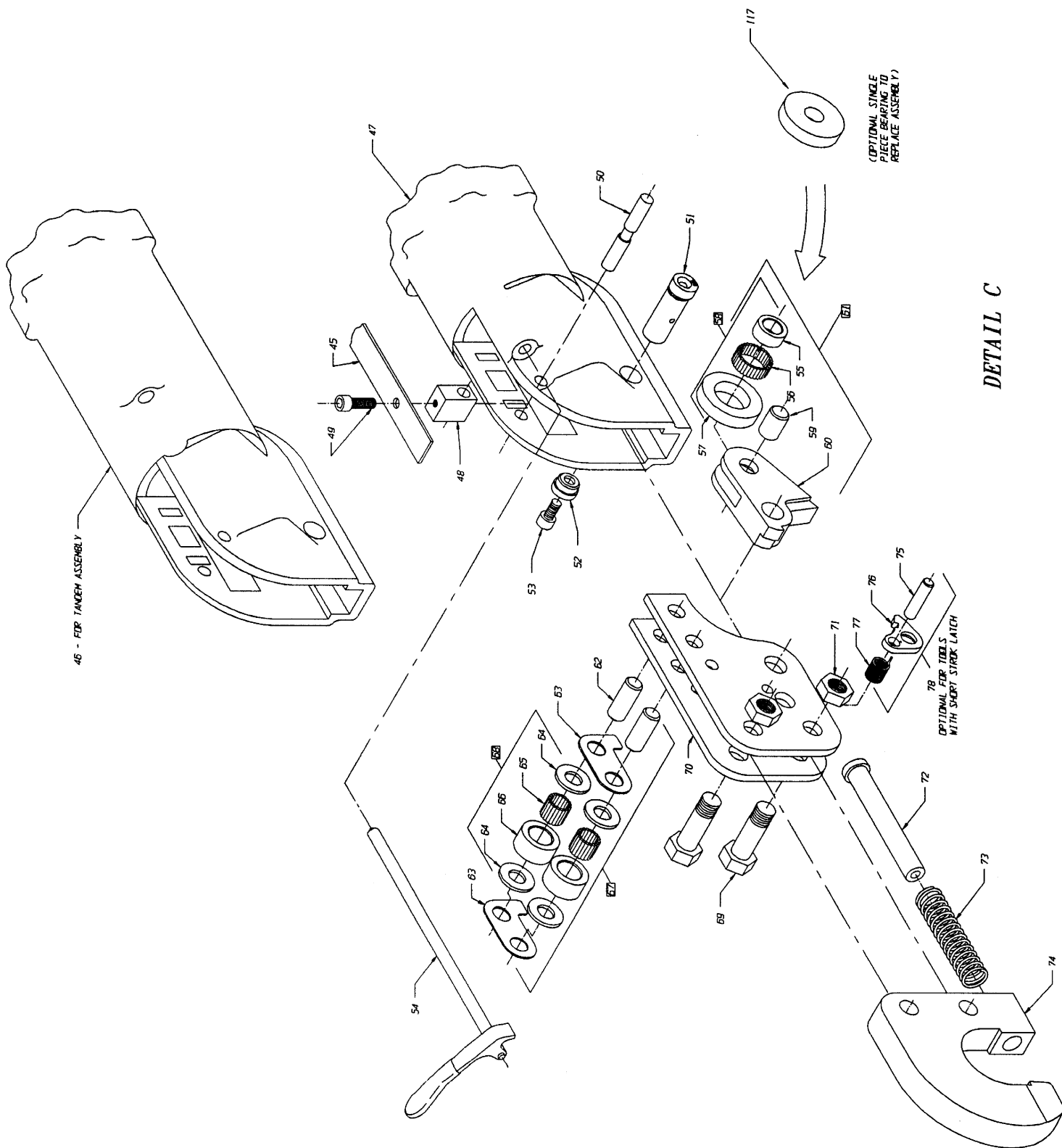
14083 S. Normandie Ave., Gardena, CA 90249



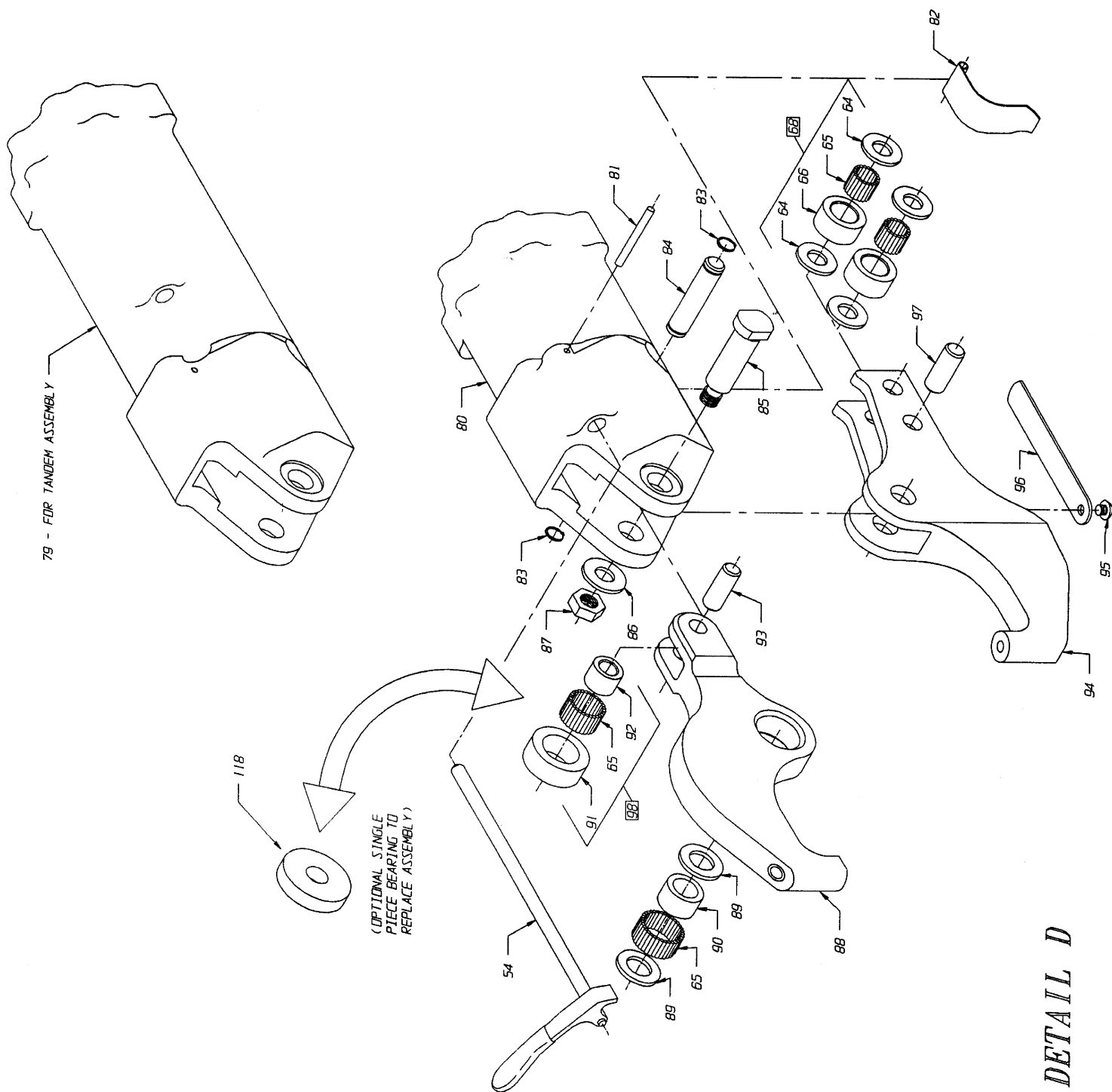
DETAIL A

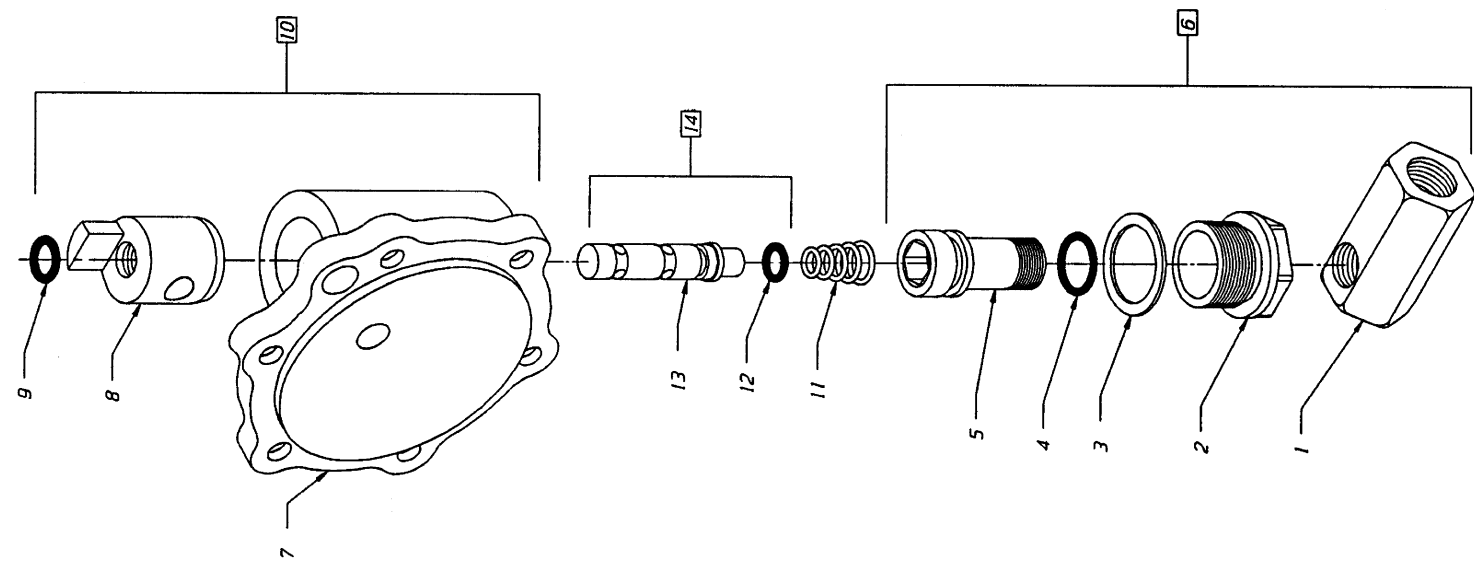


DETAIL B



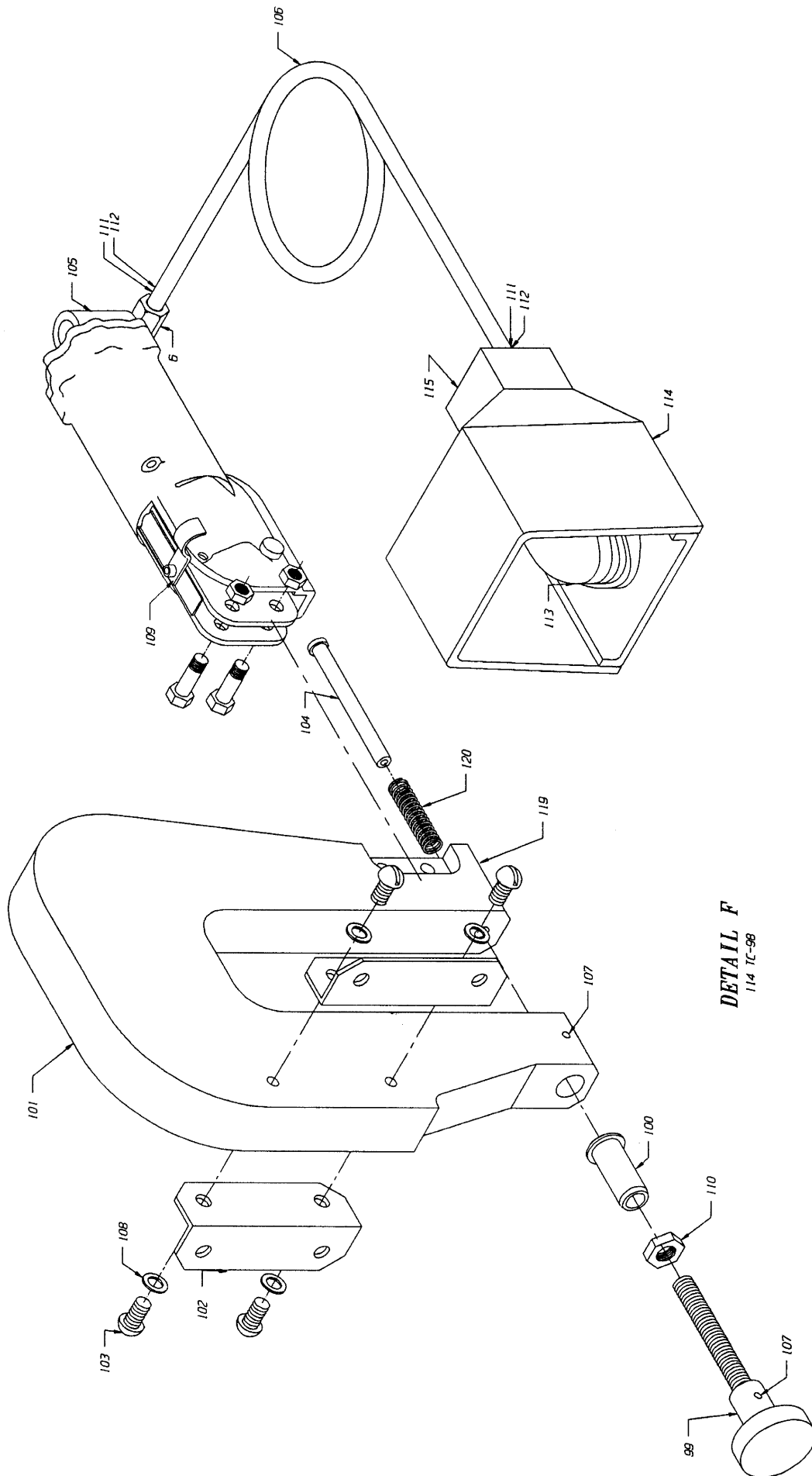
DETAIL C





15 - BACKHEAD ASSEMBLY  
5048SAF

DETAIL E



**DETAIL F**  
114 TC-98

ITEM NO.	U.S. PART NO.	DESCRIPTION
1	5047	90 DEGREE
2	5046	SWIVEL NUT
3	5045	GASKET
4	5044	O-RING
5	5043	AIR INLET SWIVEL HEAD
6	5047A	SWIVEL HEAD ASSEMBLY (INCLUDES 1-5)
7	5042	BACKHEAD BARE
8	5041SAF	SAFETY TV BUSHING
9	2-10	O-RING
10	5042A	BACKHEAD W/BUSHING & O-RING (INCLUDES 7-9)
11	5038G	T.V. SPRING
12	2-8	O-RING
13	5039G	THROTTLE VALVE-BARE
14	5039A	T.V. ASSEMBLY
15	5048SAF	COMPLETE BACKHEAD ASSEMBLY (INCL. 6,10,11,14)
16	5035	SOC HD SCREW
17	5037N	LEVER
18	5093SAF	T.V. LEVER SAFETY SPRING
19	5034	SOC HD SCREW (6)
20	5033	GASKET
21	5032	JAM NUT
22	5031	CUP LEATHER PLATE
23	5030	CUP LEATHER
24	5029	PISTON
25	5027	WEDGE FORK (C & A TYPE)
26	5026	WEDGE RIVET
27	5025	WEDGE SPACER
28	5072C	WEDGE (C)
29	5028	WEDGE (A)
30	5100	WEDGE ASSEMBLY (C) (INCL. 25, 26, 27, 29)
31	5098A	WEDGE ASSEMBLY (A) (INCL. 25, 26, 27, 29)
32	5023	INNER SPRING (2)
33	5024	OUTER SPRING (2)
34	5083	TANDEM PISTON
35	5080	RETURN RING (2)
36	2-136	O-RING
37	5081	SEPARATOR
38	2-112	O-RING
39	5085A	PISTON ROD (TC)
	5079	PISTON ROD (TA)
40	5077	WEDGE FORK (TC & TA)
41	5076TC	WEDGE (TC)
42	5076TA	WEDGE (TA)
43	5077A	WEDGE ASSEMBLY (TC) (INCL. 26, 27, 40, 41)
44	5098TA	WEDGE ASSEMBLY (TA) (INCL. 26, 27, 40, 42)
45	5061	ROLLER GUARD
46	5075	CYLINDER (TC)
47	5063	CYLINDER (C)
48	5060	ROLLER GUARD BLOCK
49	5062	ROLLER GUARD SCREW
50	5064	GUARD BLOCK PIN
51	5065	LEVER SHAFT
52	5059	LEVER SHAFT WASHER
53	5058	LEVER SHAFT SCREW
54	5021	THROTTLE VALVE LEVER
55		INNER RACE LEVER
56		ROLLER BEARING (32)
57		OUTER RACE-LEVER
58	95073	LEVER BRG. ASSEMBLY (INCL. 55, 56, 57)
59	5069B	SHAFT
60	5070	SET HOLDER LEVER
61	95071	SET HOLDER LEVER (INCL. 58, 59, 60)
62	5008	ROLLER SHAFT (2)

ITEM NO.	U.S. PART NO.	DESCRIPTION
63	5056	GUIDE PLATE (2)
64	5011	THRUST WASHER (4)
65	5007	ROLLER BEARINGS (40)
66	5012	STATIONARY ROLLERS (2)
67	5092	STATIONARY ROLLER ASSEMBLY (INCL. 62-66 (1)
68	5057	ROLLER BEARING ASSEMBLY (INCL. 64-66) (2)
69	5054	YOKE BOLT (2)
70	5055	YOKE FRAME PLATE (2)
71	5053	YOKE BOLT NUT (2)
72	5052-2 9/16	SET HOLDER STD - 2-9/16 OAL (OTHER SIZES AVAIL.)
73	5051	SET HOLDER SPRING
74	538	C-YOKE (TC-C ) (OTHER STYLES AVAILABLE)
75	5104	LATCH PIN - SHORT STROKE
76	5103	LATCH-SHORT STROKE
77	5102	LATCH SPRING-SHORT
78	5101	SHORT STROKE LATCH ASSEMBLY
79	5087	CYLINDER (TA)
80	5015	CYLINDER (A ONLY)
81	5016	PIN-RETURN SPRING
82	5010	RETURN SPRING
83	5013	TRU-ARC RET. RING (2)
84	5014	ROLLER SHAFT
85	5009	BRG. BOLT
86	5017	BRG. BOLT WASHER
87	5018	BRG. BOLT WASHER
88	5004	MOVING JAW 1" (STD)
	5004-2-1/4	MOVING JAW 2-1/4"
	5004-3	MOVING JAW 3"
	5004-5.5	MOVING JAW 5-1/2"
89	5005	BRG. THRUST WASHER
90	5006	BRG. INNER RACE
91	5019	ROLLER RACE
92	5020	INNER ROLLER RACE
93	5003	MOVING JAW END - BRG. SHAFT
94	5002	STATIONARY JAW 1" (STD)
	5002-2-1/4	STATIONARY JAW 2-1/4"
	5002-3	STAT. JAW 3"
	5002-5.5	STAT. JAW 5-1/2"
95	5000	RD. HD. SCREW
96	5001	STATIONARY JAW ROLLER GUARD
97	5008	STATIONARY JAW ROLLER SHAFT
98	95086	MOVING JAW END ROLLER ASSEMBLY
99	8076	ADJ. SCREW W/KNOB
100	8075	BUSHING
101	998	C-YOKE
102	8077	MOUNTING BASE (2)
103	8078	SCREW
104	35115-5	SET-HOLDER
105	5091Y	BACKHEAD
106	TP104-13	AIR HOSE
107	8080	SET SCREW (2)
108	5054W	WASHER (4)
109	US81945A	CLAMP
110	35179	JAM NUT
111	TP104-10	1/4 BARB FITTING (2)
112	TP104-11	FERRO (2)
113	5091	REMOTE FOOT PEDAL
114	4450	FULL FOOT GUARD
115	18037	INLET BUSHING (2)
116	5037SP	LEVER STOP
117	95073	BEARING (SOLID ASSEMBLY)
118	95086	BEARING (SOLID ASSEMBLY)
119	842-1	GREASE FITTING
120	5052 ADJ	SPRING