

# H-P35 Series

## HIGH PERFORMANCE OEM QUALITY HYDROGEN PRESSURE REGULATOR

### Key Features

Designed for hydrogen applications up to 35 Mpa (5,000 psi).

The H-P35 Series Regulator delivers stable outlet pressures under varying fuel cell flow demands and inlet pressures.

This regulator benefits from 25 years of evolution in CNG applications in order to be a reliable, cost effective product.

- Balanced design for stable outlet pressure at all tank pressures
- Optional integrated high pressure lock off valve
- Optional integrated high pressure sensor
- Heavy duty design validated to over 1.8 million cycles
- Integrated high flow Pressure Relief Valve (PRV)
- Wide range of factory set output pressures available



# SPECIFICATIONS

## H-P35 Series

### GENERAL INFORMATION

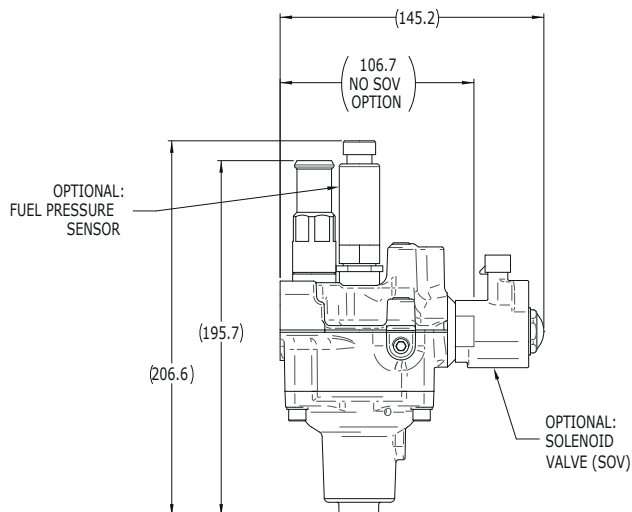
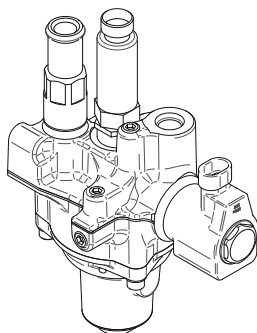
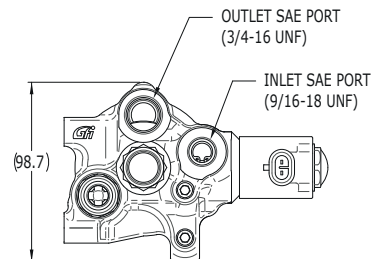
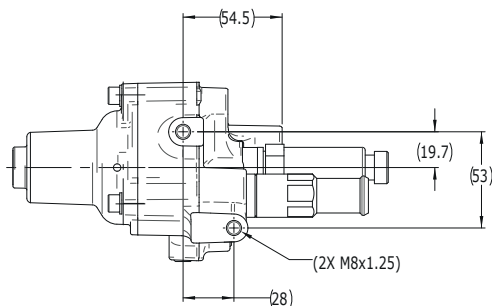
APPLICATION	Hydrogen high pressure regulator
DESIGN	Balanced single stage, pintle and diaphragm type
BODY MATERIAL	Forged Aluminum
FUEL TYPE	Hydrogen

### PERFORMANCE

MAX SERVICE PRESSURE		35 MPa (5,000 psi)	
REGULATED FLOW RATE		Up to 9 g/s Hydrogen	
OUTLET PRESSURE		Factory adjustable: 200 to 1,600 kPa (29 to 232 psig)	
WORKING TEMPERATURE		-40 °C to 85 °C (-40 °F to 185 °F)	
PRESSURE RELIEF VALVE		Multiple settings available between 300 and 2,500 kPa (43 to 363 psig)	
FILTER (REPLACEABLE)		40 µm, 99% efficiency	
PRESSURE SENSOR		Customer defined	
SOLENOID	Voltage	12 V	24 V
	Current draw	1.14 A	0.54 A
	Control	Saturated	

### CONNECTIONS

INLET THREAD TYPE	9/16" - 18 UNF
OUTLET THREAD TYPE	3/4" - 16 UNF
PRV INTERFACE	9/16-18 UNF-2B; others available
ELECTRICAL CONNECTOR (solenoid)	Mating connector: AMP Superseal 1.5, 2 pin; 282080-1



IATF 16949:2016 registered  
a Westport Fuel Systems company

