

## QUESTIONS & ANSWERS

**Q. Do I need to charge my battery if I'm using it for the first time ?**

A. We recommend a full charge, before first time use. DO NOT charge battery for over 24 hours at a time, this will cause an OVER CHARGE and will shorten battery life.

**Q. Can I completely discharge my battery before recharging ?**

A. NO ! Always be aware when riding, when headlight begins to dim, immediately turn off headlight to avoid 100% discharge. If the battery is completely discharged, it is highly possible you will damage the battery and a replacement battery will be needed.

**Q. How can I get the maximum amount of life from my battery ?**

A. Maintenance and care are the most important keys for maximum battery life. We recommend keeping the battery fully charged, by doing so you will prolong your battery life.

\* Before storage, we suggest to fully charge your battery.

\* A full charge is required every 3-4 months while in storage.

**Q. How often should I charge my battery ?**

A. We recommend that you charge your battery after every ride. After 1 hour of use, you should charge your battery about 6 hours. Battery charging highly depends on how often and how long you use your headlight system. [For more information refer to BATTERY CHARGING]

**Q. What does the RED light on the charger mean ?**

A. The RED light only indicates that the wall outlet is working and the charger is on (it does not indicate the battery charging status).

**Q. Can I use a 12 volt battery on my 6 volt headlight system ?**

A. NO ! Using a 12 volt battery on any 6 volt systems, will cause the bulbs to blow-out and replacement bulbs will be needed.

**Q. Can I use a 12 volt charger on my 6 volt battery ?**

A. NO ! Using a 12 volt charger on 6 volt battery, will damage battery permanently and a replacement battery will be needed.

**Q. How can you tell the difference between the wide and narrow beam bulb ?**

A. Consistent throughout the Night-Rover series, when directly facing the bulbs, the left side is the narrow beam bulb and the right side is the wide beam bulb. As you will notice, the difference in the appearance of the bulbs is that the narrow beam bulb has finer grids and the wide beam bulb has wider grids.

## TROUBLE SHOOTING

### IF THERE IS NO LIGHT...

THOROUGHLY CHECK THE FOLLOWING:

#### Check:

- ✓ Are all cables firmly in place
- ✓ Is the safety fuse blown (in battery bottle)
- ✓ Are the bulbs blown
- ✓ Is your battery fully charged
- ✓ Is your wall outlet working
- ✓ Is the charger properly placed in wall outlet

For questions, problems, and/or authorized CYGO-LITE parts contact:  
CYGO-LITE direct Tel: (714) 437-7752 or visit website [www.cygolite.com](http://www.cygolite.com).

## WARRANTY

NIGHT-ROVER WB comes with a one year limited warranty, including parts and labor, against any defective unit (**excluding bulbs and battery**). Bulbs and batteries are warranted for 30 days after the original date of purchase. If the unit is still under warranty, Cygo-Lite will repair or replace defective components at no charge provided that said product has not been subjected to misuse, abuse, or non-Cygo-Lite authorized alteration, modification, and/or repair. Warranted units requiring service must receive a Return Merchandise Authorization (RMA) number from customer service. Call or fax for RMA number. **Original Receipt** (including date) will be required on all returns.

CYGO-LITE  
SANTA ANA, CALIFORNIA USA  
PHONE: (714) 437-7752 FAX: (714) 437-7962  
[www.cygolite.com](http://www.cygolite.com)



**NIGHT-ROVER WB™**

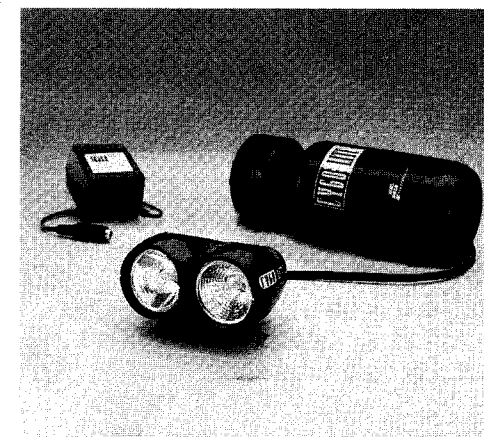
**WATER BOTTLE  
OPERATION MANUAL**

Congratulations on your purchase of the Night-Rover WB, the most innovative and economical RECHARGEABLE headlight system on the market. The Night-Rover WB is an unique dual light system with an exclusive feature designed only by CYGO-LITE, a 5 degree pitch beam angling that allows you full road coverage. For convenience, the battery comes in a water bottle that easily mounts on your bicycle. The Night-Rover WB is designed to provide years of reliable operation in all types of weather. To ensure proper usage and maximize the system's performance, keep this manual on hand for easy reference.

## FEATURES

- Easy-to-Mount Water Bottle Battery
- Exclusive Hi Beam Pitch (Hi beam pitched 5 degrees for better road coverage)
- 12.5 Watts of Intense Halogen Light
- Two Independent Hi/Lo Beam Switches
- Choice of 3 Beam Patterns (6.3w wide, 6.2w narrow, 12.5w dual)
- Lightweight, Thermoplastic Casing
- Side-to-Side Swivel Mount for easy control of horizontal beam direction
- Runs up to 3 hours on a single beam, 1 1/2 hours on a dual beam
- Thumb-screw mounting for easy vertical beam adjustments
- Upgradeable to Helmet Mount (sold separately)

## SYSTEM CONTENTS



### NIGHT-ROVER WB

#### SYSTEM INCLUDES:

- RECHARGEABLE BATTERY
- HEADUNIT
- QUICK RELEASE MOUNT
- 6 VOLT CHARGER

## BATTERY CHARGING

### IMPORTANT

- \* **FOR FIRST TIME USE, MAKE SURE YOU GIVE THE BATTERY A FULL CHARGE**
- \* **USE ONLY 6 VOLT CHARGER PROVIDED BY CYGO-LITE**
- \* **CHECK SAFETY FUSE ON BATTERY CABLE PERIODICALLY. IF FUSE IS BLOWN, CONTACT CYGO-LITE FOR REPLACEMENT INSTRUCTIONS. ONLY USE CYGO-LITE AUTHORIZED FUSES.**
- \* **WHEN IN USE AND HEADLIGHT BEGINS TO DIM, IMMEDIATELY SWITCH SYSTEM OFF TO PREVENT 100% BATTERY DISCHARGE. COMPLETE DISCHARGE OF BATTERY WILL RESULT IN BATTERY DAMAGE AND REQUIRE BATTERY REPLACEMENT.**

1. Connect 6 Volt charger to battery; plug into outlet. (The red light on the charger will turn on, indicating the wall outlet is working. If the light does not turn on try another wall outlet.)
2. Charge battery for 10-12 continuous hours (this will give the battery a full charge)
3. **DO NOT charge battery for more than 24 hrs.;** battery life could be adversely affected.
4. Disconnect battery from charger for a few minutes before use to allow voltage to stabilize.
5. Disconnect charger from wall outlet when not in use.
6. If you use the light for about an hour, you may recharge the battery for about 6 hours, bringing it up to a full charge. (see below for more detail)

RECOMMENDED CHARGE TIME vs. BURN / USAGE TIME (6.2-watt)

*Aprx. Burn Time (hour)	1/2	1	1 1/2	2
Aprx. Charge Time Required	3	6	8	9

\* Based on a single 6.3-Watt Bulb.

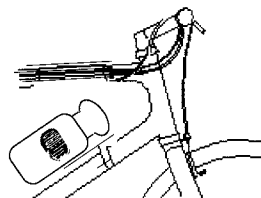
**Warning:** To maximize battery life, fully charge battery before storage. Battery should be given a full charge every 3-4 months that it is in storage. This will prolong battery life and prevent battery damage.

## SPECIFICATIONS

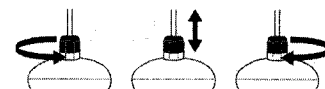
APPRX. RUN TIME			
Battery	Voltage	6.3-Watt Single	12.5-Watt Dual
Gel-Cel	6	3 hrs.	1-1/2 hrs.

## BATTERY ATTACHMENT

**CAUTION:** Avoid wrapping straps and wire cables around brake and gear cables which will impede function.

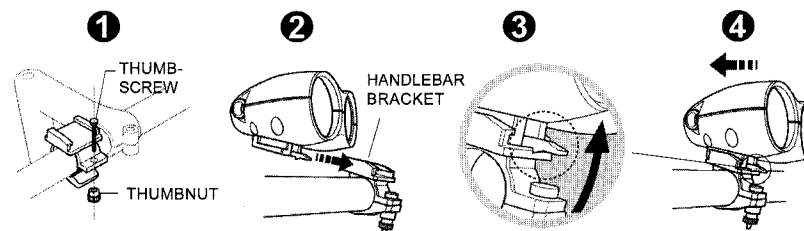


Insert into water bottle cage as shown.



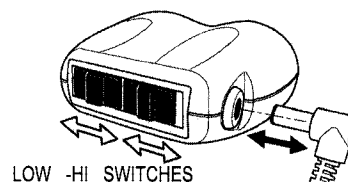
To adjust cable length, twist open the cap, push out cable holder from inside, adjust to own preference, then re-insert cable holder and push back into cap.

## MOUNTING HEADLIGHT



To adjust beam position, loosen thumbscrew, adjust to own preference, then tighten thumbscrew.

## HEADLIGHT OPERATION



**Note:** Each light beam has it's own independent switch. (6.3W WIDE, 12.5W DUAL, and 6.2W NARROW)

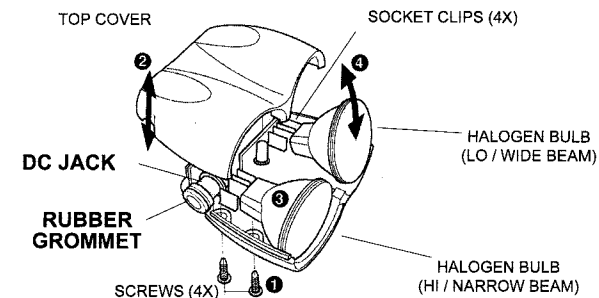
Connect battery wire plug to head unit. Do not interfere with handlebar movement or brake function. Turn handlebar completely to the right and left to ensure no wire interference. Operate brakes to check for proper wire slack and function. Slide switches on back of headlight to activate lights.

Due to moisture in the air, a small amount of condensation may occur on the lens. This does not damage the unit, nor affect its performance. It will naturally dissipate once unit is warm through usage.

**NOTE:** If no power, refer to "Trouble Shooting" located in the back of the manual.

## BULB REPLACEMENT

\*Use Cygo-Lite specified Halogen bulbs only (6volts-6.3watts). Cygo-Lite replacement bulbs are available from your local bicycle retailer or Cygo-Lite.  
**NOTE: DO NOT USE / INSTALL BULBS GREATER THAN 6.5 WATTS**



**CAUTION: UNPLUG BATTERY FROM HEADLIGHT WHILE REPLACING BULB TO PREVENT ELECTRICAL SHORT CIRCUITING.**

- 1) Use fillips head screw driver to remove the screws (4x) from casing.
- 2) Remove top headlight casing.
- 3) Before removing a bulb, study how the bulbs are mounted.
- 4) Gently remove only one (1) old bulb from socket clips.
- 5) Install new bulb in socket clips (compare with other bulb for proper installation then repeat #4 & #5 for second bulb replacement).
- 6) Make sure that DC jack and rubber grommet are in position properly, before closing.
- 7) Return top cover of headunit and fasten the headunit together with screws. (DO NOT OVER TIGHTEN THE SCREWS)

**NOTE:** Never install/replace a Cygo-Lite original bulb with a different wattage bulb. May cause damage to the headunit. Always replace with same wattage as the original bulb.

## IMPORTANT PRECAUTIONS

Please read entire manual and adhere to all instructions.

1. This unit was designed as a visual aid, not a device for avoidance illumination or preventing collisions with other vehicles. Cygo-Lite accepts no liability for injuries sustained during product usage.
2. High intensity halogen lamps become very hot which can damage skin and fabrics. Avoid touching lamp or housing, particularly when cycle is not in motion with no air flow.
3. When not in motion, do not operate single beam for more than 20 minutes or dual beams longer than 5 minutes.
4. **Disconnect battery pack from headlight when not in use.** The high intensity lamps become very hot and could cause a fire if left on and put in contact with surrounding materials.
5. This unit is weatherproof and water resistant (i.e. rain), but not waterproof. Do not submerge in any liquid.
6. When disconnecting headlights from battery, gently pull on plastic connectors, not wire cable.
7. **Do not modify headlights, charger, or battery. Alterations will void warranty, diminish performance, damage system, and may cause injury.**
8. Never look directly into light beam.
9. Always use a Cygo-Lite charger to charge your batteries. Using a charger other than a Cygo-Lite charger will void warranty and will damage battery.
10. Always keep light and battery out of arms reach of children.