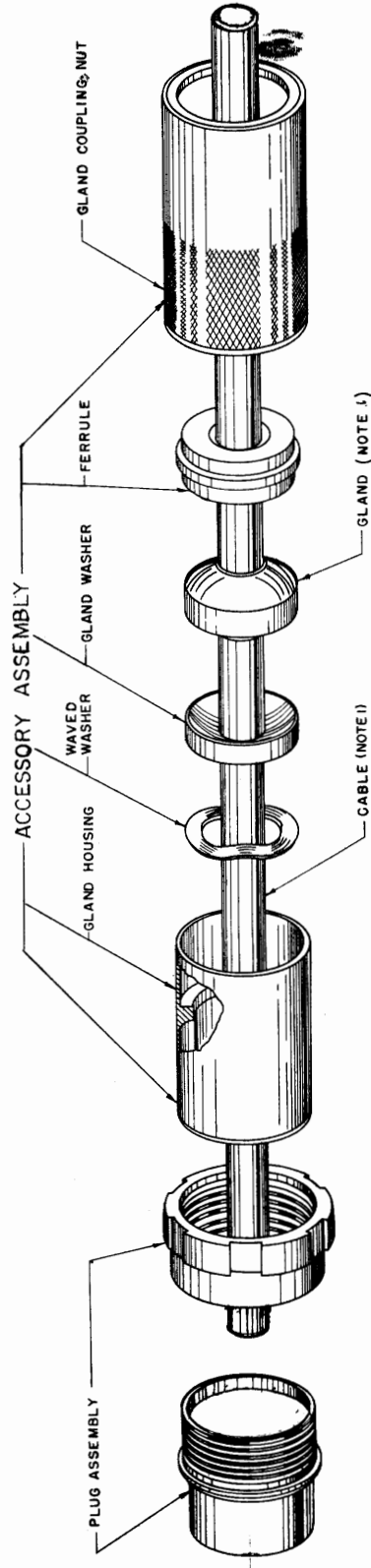


TEXT REVISIONS FIRST USED ON

REV	DATE	DESCRIPTION	APPROVAL
B	14 MAY 52	CABLE PREPARATION DELETED FROM TITLE & DWG. NOTE 1 ADDED.	GD
C	31 JAN 55	RINGS ADDED.	ME
D	23 NOV 55	REVISED & RECAPTIONED	ME
E	5 FEB 63	NOTE 3 ADDED	ME
F	16 MAY 67	REVISED & RECAPTIONED, TITLE REVISED	ME

ORIGINAL ISSUE SYMBOL A 18 NOV 1949

NOTE:
 1.— USE LUBRICANT "PETROLATUM, WHITE PRAMEL" PER FEDERAL SPEC. VV-B-236 OR EQUAL IN CASE OF TIGHT FIT.
 IMPORTANT CAUTION SHOULD BE EXERCISED IN TIGHTENING THE COUPLING NUT OF THE ACCESSORY ASSEMBLY TO THE PLUG ASSEMBLY. ANCHOR CABLE AND PLUG ASSEMBLY IN A STATIC POSITION AND ROTATE THE GLAND COUPLING NUT BY HAND CLOCKWISE TO TIGHTEN GROMMET SNUGLY AGAINST THE CABLE, WITHOUT EXCESSIVE FORCE.



PIN CONFIGURATION NOT SHOWN

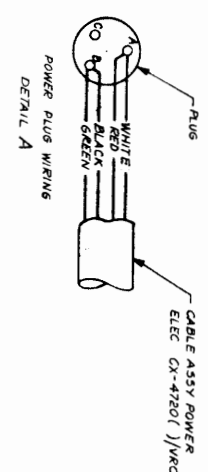
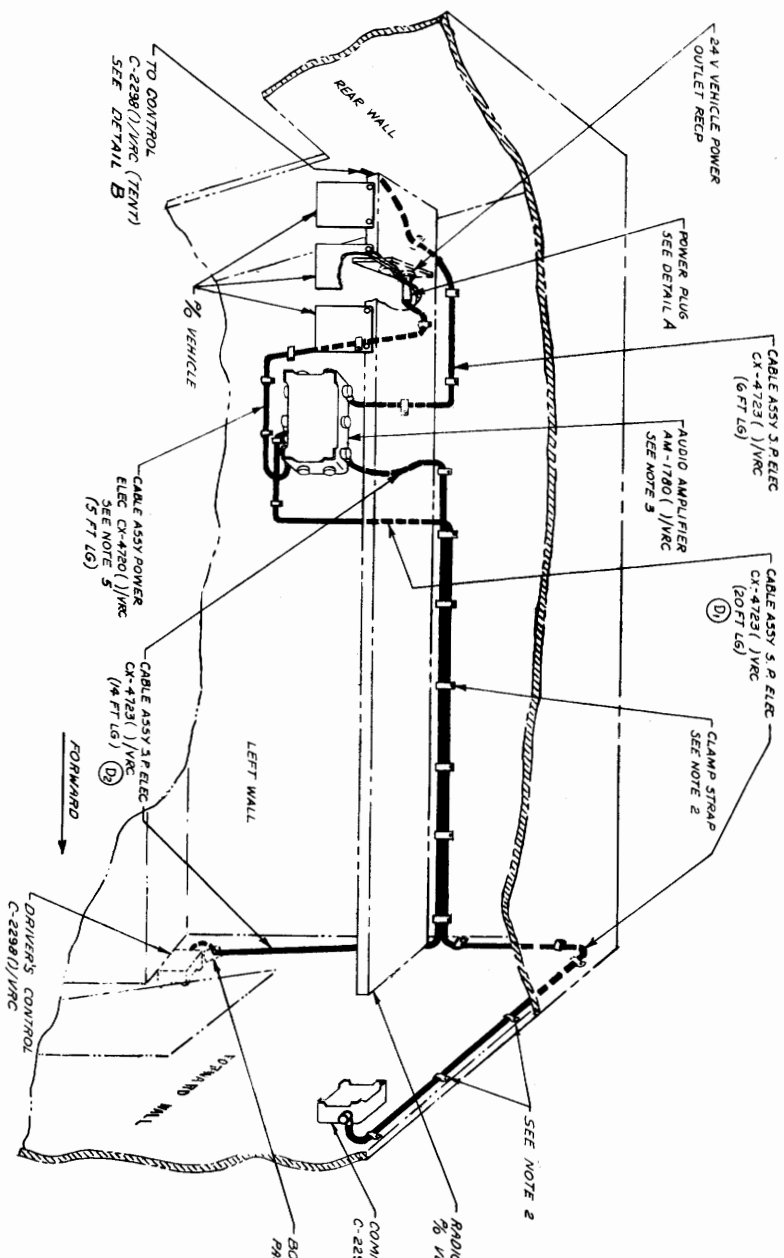
EXPLODED VIEW OF PLUG ASSEMBLY AND ACCESSORY ASSEMBLY W/CABLE

SECTION	PART NO.	DESCRIPTION	MADE	SPEC.	NOTE
ASSEMBLY OF WATERPROOF CONNECTOR					
DEPARTMENT OF THE ARMY SIGNAL CORPS ENGINEERING LABORATORIES					
FORT MONMOUTH, NEW JERSEY					
SC-C-28185					

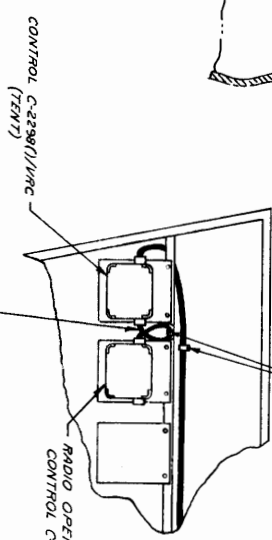
UNLESS OTHERWISE SPECIFIED:	UNLESS OTHERWISE SPECIFIED:
DIMENSIONS ARE IN INCHES	TOLERANCES UNLESS OTHERWISE SPECIFIED:
FRACTIONS IN	FRACTIONS IN
DECIMALS IN	DECIMALS IN
ANGLES IN	ANGLES IN
APPLY TO STOCK SIZES	APPLY TO STOCK SIZES
ALL SURFACES	ALL SURFACES

AUTHORIZATION	DATE	SCALE	FINISH
DR. B. BEDKOWSKI	18 NOV 1949	1/1	
CH. ERICKSON			
VERIFIED M. Z.			
APPROVED ST.			
REVIEWER			

WHEN REFERRING TO THIS DRAWING STATE DRAWING NO., APPLICATION, ISSUE SYMBOL, AND DATE



INTERCOMMUNICATIONS SET AN/VIC-1(V)



DETAIL B

- NOTES:
- 1 — INTERCOMMUNICATIONS SET AN/VIC-1(V) SHOULD BE INSTALLED PRIOR TO ANY RADIO SET INSTALLATIONS.
 - 2 — CUT CLAMP STRAP MATERIAL INTO REQUIRED LENGTHS AND SECURE TO EXISTING WELD RINGS APPROXIMATELY AS SHOWN.
 - 3 — CAUTION: IT IS VERY IMPORTANT THAT THE CABLE CONNECTORS ENTER THE AM-1780(1) VRC FOR ALL INSTALLATIONS AS SHOWN.
 - 4 — MOUNTING PROVISIONS, HOLES, BRACKETS ETC. ARE PROVIDED AS PART OF THE VEHICLE. MOUNTING HARDWARE IS PROVIDED ATTACHED TO THE COMPONENTS.
 - 5 — CABLE ASSY POWER ELECTRIC CX-4720(1) VRC IS NOT CONNECTED TO AUDIO AMPLIFIER AM-1780(1) VRC WHEN RADIO SETS ARE ADDED TO THE AN/VIC-1 SYSTEM.

(E) THIS DRAWING USED FOR THE FOLLOWING INSTALLATIONS:

AN/VIC-12	AN/VIC-64
AN/VIC-43	AN/VIC-65
AN/VIC-44	AN/VIC-125
AN/VIC-45	AN/VIC-160
AN/VIC-46	AN/VIC-161
AN/VIC-47	AN/VIC-1
AN/VIC-49	
AN/VIC-55	

REV	DESCRIPTION	DATE	BY	CHKD
B	SHEET 2 REVISED	18 JUN 62	XXX	XXX
C	EXTENSIVE CHANGES	1 FEB 62	XXX	XXX
D	(1) WAS 16 FT LG.	5 JUN 62	XXX	XXX
D	(2) WAS 15 FT LG.	15 JUN 62	XXX	XXX
E	(1) ADDED TITLE REVISED	15 JUN 62	XXX	XXX
F	SHEETS 2 AND 3 REVISED	15 JUN 62	XXX	XXX

DESIGN INSPECTED & ACCEPTED FOR U. S. COMBAT UNITS BY:

NAME: MARJOR G. MILLIA
 BOARD NO. 2 FT. KNOD, KY.
 DATE: 16 MARCH 1962

APPROVED FOR THE CHIEF SIGNAL OFFICER:

NAME: [Signature]
 RND, SIGNAL CORPS DATE: 13 JULY 62

APPROVED FOR THE CHIEF SIGNAL OFFICER:

NAME: [Signature]
 RND, SIGNAL CORPS DATE: 13 JULY 62

APP. NO.	DATE	BY	CHKD

INSTALLATION OF TRAN-SISTORIZED FM RADIO SETS IN CARRIER COM-MAND POST M577

USASNDL

SC-D-49623

SHEET 1 OF 3

GWACIB No.: 361
Code Ident. No.: 20309

Issue No.: 5, 15 September 1970
Number of Pages: 2

FSN: 7610-856-8725

II. INSTALLATION OF ABOVE TRANSISTORIZED RADIO SETS:

a. Assemble components and install as shown on the following drawings:

<u>Drawing No.</u>	<u>Title</u>
SC-D-49623	Installation of Transistorized FM Radio Sets in Carrier, Command Post, M577

b. Reference Drawings:

<u>Drawing No.</u>	<u>Title</u>
SC-B-28561	Assembly Instructions for Mast Base AB-15/GR (For Lead-Ins using BNC Connectors)
SC-C-28185	Assembly of Waterproof Vehicle Terminal Box Plugs
SC-D-189021	Drilling Details for Antenna AS-1729/VRC

III. OPERATION:

Refer to technical manuals supplied with radio set for alignment, operation and maintenance instructions.

INSTRUCTIONS FOR INSTALLATION OF TRANSISTORIZED
FM RADIO SETS IN CARRIER, COMMAND POST,
M577

GVMCID No.: 381
Code Ident. No.: 20309

Issue No.: 5, 15 September 1970
Number of Pages: 2

FSN: 7610-856-8725

I. EQUIPMENT REQUIRED:

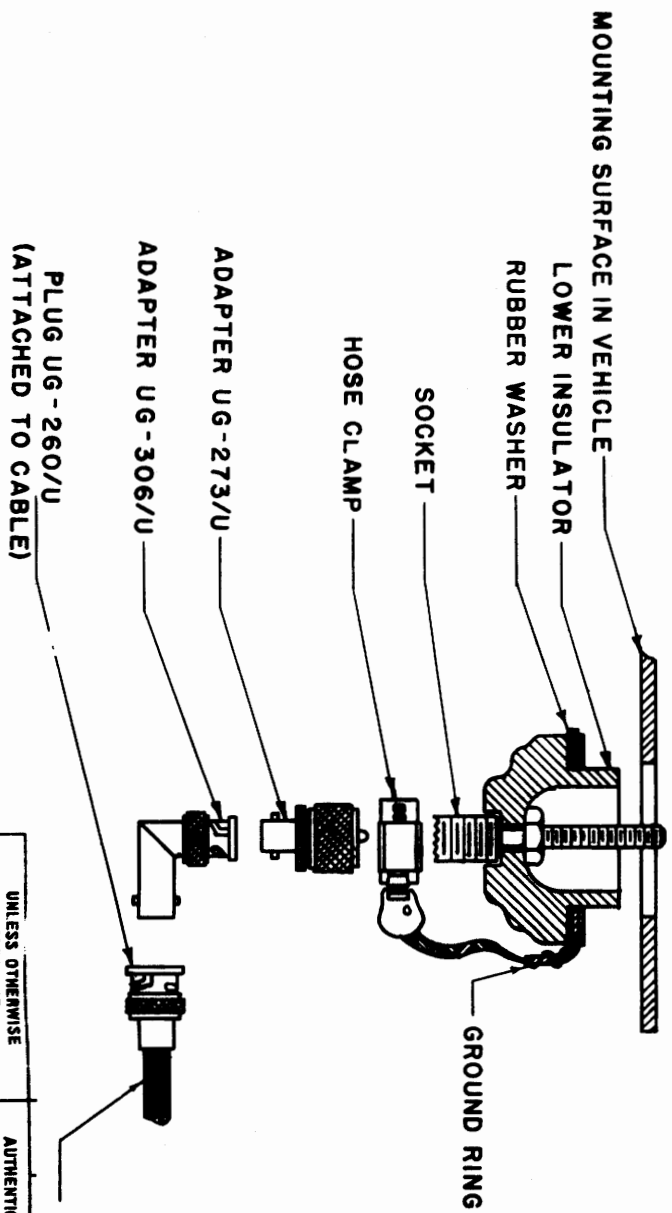
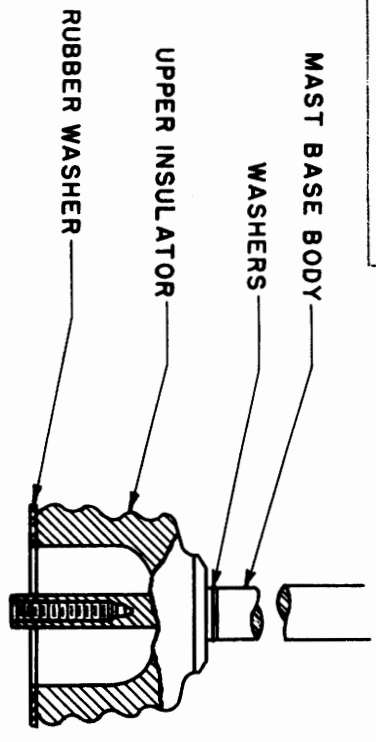
<u>Radio Set</u>	<u>Basic Unit FSN</u>	<u>Installation Harness FSN</u>	<u>Accessory Kit & Accessory Kit FSN</u>
AN/VRC-12	5820-223-7412	*5820-493-7513	MK-1320/V 5820-938-0242
AN/VRC-43	5820-223-7415	*5820-762-4876	MK-1323/G 5820-938-0249
AN/VRC-45	5820-223-7418	*5820-493-7514	MK-1321/V 5820-938-0243
AN/VRC-46	5820-223-7433	*5820-762-4876	MK-1323/G 5820-938-0249
AN/VRC-47	5820-223-7434	*5820-493-7513	MK-1320/V 5820-938-0242
AN/VRC-49	5820-223-7437	*5820-493-7514	MK-1321/V 5820-938-0243
AN/VRC-53	5820-223-7467	*5820-762-4876	MK-1323/G 5820-938-0249
AN/GRC-125	5820-223-7411	*5820-762-4876	MK-1323/G 5820-938-0249
AN/VRC-64	5820-223-7475	*5820-762-4876	MK-1323/G 5820-938-0249
AN/GRC-160	5820-223-7473	*5820-762-4876	MK-1323/G 5820-938-0249
AN/VIC-1(V)	None	5830-492-8250	MK-1319/VIC-1(V) 5830-936-9151

*NOTE: AN/VIC-1(V) components included in harness.

NOTICE: WHEN GOVERNMENT DRAWINGS, SPECIFICATIONS, OR OTHER DATA ARE USED FOR ANY PURPOSE OTHER THAN IN CONNECTION WITH A DEFINITELY RELATED GOVERNMENT PROCUREMENT OPERATION IN THE UNITED STATES GOVERNMENT THEREIN, THE GOVERNMENT MAY HAVE FORMULATED, EITHER SEPARATELY OR IN CONNECTION WITH THE SAID DRAWINGS, SPECIFICATIONS, OR OTHER DATA IS NOT TO BE REGARDED BY IMPLICATION OR OTHERWISE AS IN ANY MANNER ENDORSING THE HOLDER OR ANY OTHER PERSON OR CORPORATION IN CONNECTION WITH THE INVENTION THAT MAY IN ANY WAY BE RELATED THERE TO.

NEXT ASSEMBLY	FIG# USED ON

SYMBOL	REVISIONS	DESCRIPTION	ORIGINAL ISSUE SYMBOL	DATE
			A	9 MAY 51



ASSEMBLY INSTRUCTIONS:

1. PLACE ONE LARGE RUBBER WASHER AND THE UPPER OVER THE MOUNTING HOLE.
 2. PLACE THE TWO SMALL WASHERS ON THE STEM OF THE BASE BODY.
 3. INSERT THE MAST BASE BODY INTO THE UPPER INSULATOR.
 4. PLACE THE OTHER LARGE RUBBER WASHER ON THE INSULATOR.
 5. PLACE THE GROUND RING ON TOP OF THE WASHER. IS NOT REQUIRED WHEN R.F. CABLE CG-568/U IS EMPLOYED.
 6. INSERT THE LOWER INSULATOR INTO THE MOUNTING FROM UNDERNEATH.
 7. ASSEMBLE THE MAST BASE BY HOLDING THE LOWER AND TURNING THE MAST BASE BODY UNTIL THE MAST TO ATTACH ANTENNA LEAD-IN TO MAST BASE.
1. UNSREW BINDING POST ASSEMBLY FROM LOWER INSULATOR AND DISCARD.
 2. ATTACH ADAPTER UG-273/U TO THE ADAPTER SOCKET LOWER INSULATOR.
 3. SLIP HOSE CLAMP OVER ADAPTER UG-273/U AND SECURELY. HOSE CLAMP IS NOT REQUIRED WHEN R.F. CABLE IS EMPLOYED.
 4. ADAPTER UG-306/U MAY BE ATTACHED TO ADAPTER IF A RIGHT ANGLE CONNECTOR IS DESIRED.
 5. ATTACH BNC CONNECTOR (PLUG UG-260/U) ON THE AN TO ADAPTER UG-273/U OR UG-306/U.

RF CABLE

UNLESS OTHERWISE SPECIFIED
 DIMENSIONS ARE IN INCHES
 TOLERANCES ON
 FRACTIONS ± _____
 DECIMALS ± _____
 ANGLES ± _____
 COMMERCIAL TOLERANCES
 APPLY TO STOCK SIZES.
 ALL SURFACES

AUTHENTICATION	DRAWN
	KNUDSON
	TACED DORSEY
	CHECKED <i>Ezekielson</i>
	VERIFIED <i>SCM</i>
	APPROVED <i>pac</i>
	REVIEWED <i>XX</i>
	DATE 9 MAY 51

ASSEMBLY INSTRUCTIONS FOR
 MAST BASE AB-15/GR
 (FOR LEAD-INS USING
 BNC CONNECTORS)

SCALE _____ FINISH _____

DEPARTMENT
 SIGNAL C
 LA
 PORT MONMOUTH
 SC-1