

NX Lens Firmware Upgrade guide (including i-Launcher)



Samsung Electronics.

NX Lens Firmware upgrade guide

- **NX1 , NX30, NX300, NX300M, NX500, NX2000, NX3000, NX mini**

Please use i-Launcher program for easy firmware upgrade

(You can install “i-Launcher” program using your Camera or installation CD)

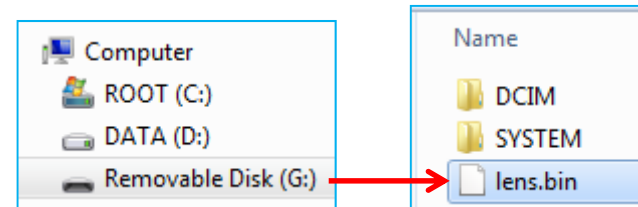
- **NX5, NX10, NX11, NX100, NX1000, NX20, NX200, NX210**

Please download firmware file from Samsung.com homepage.

→ Unzip firmware file and copy to SD card

→ Input SD card to your NX camera

→ Refer to No.7(page 4)



※ Information

1) Use the full charged battery.

2) Suggested memory card format before upgrade start.

3) During the updating process:

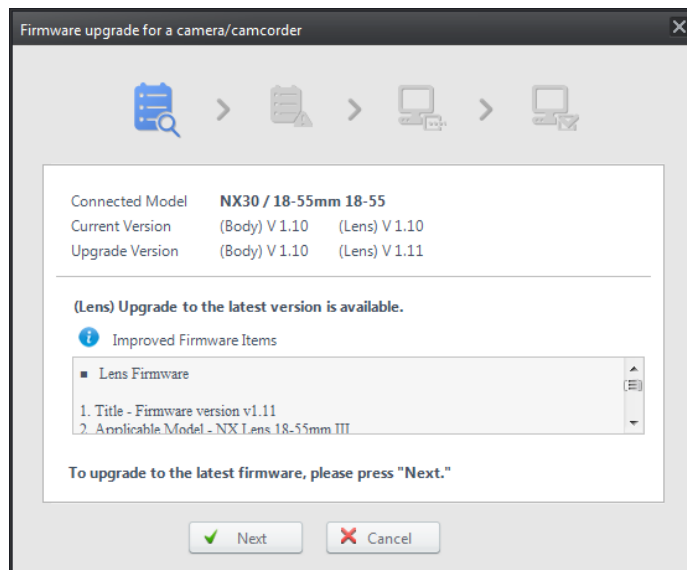
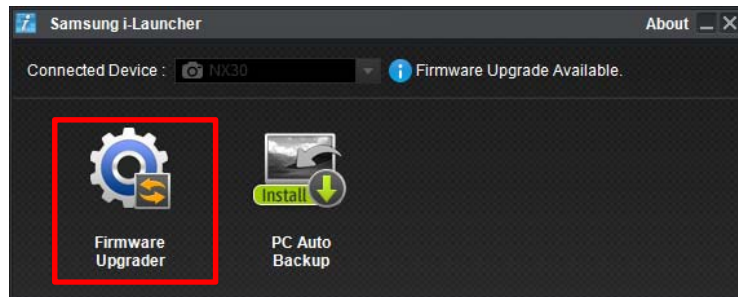
Do not cut off the power / Do not remove the battery

→ It causes the cannot power-on or the severe damage

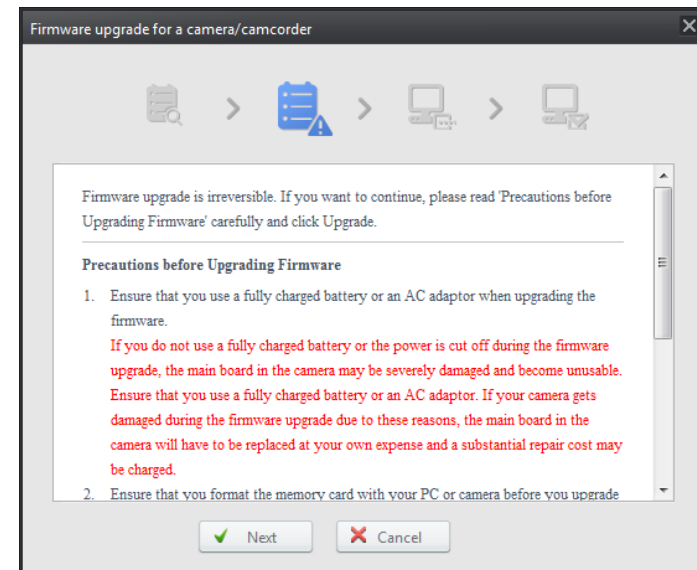
4) Firmware file name is “lens.bin”

Firmware Upgrade method

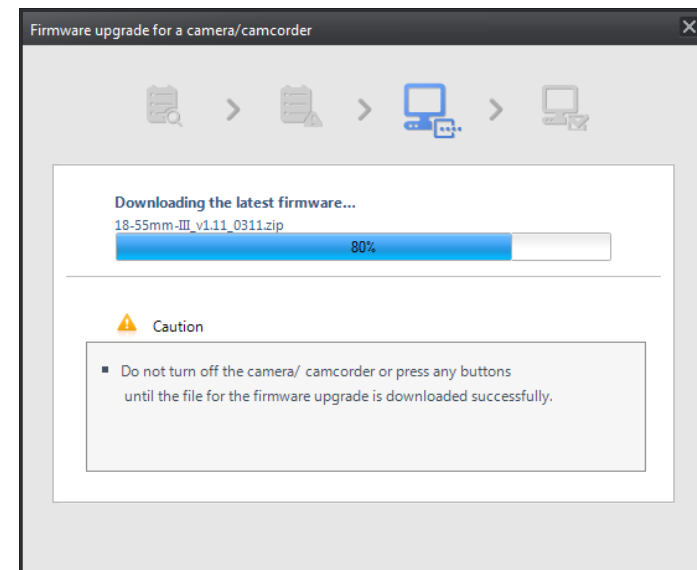
1. You can connect the camera to your computer
2. Opening “Samsung i-Launcher”
 - select “Firmware Upgrade” menu
 - * Automatically “Upgrade window” open if new firmware registered.



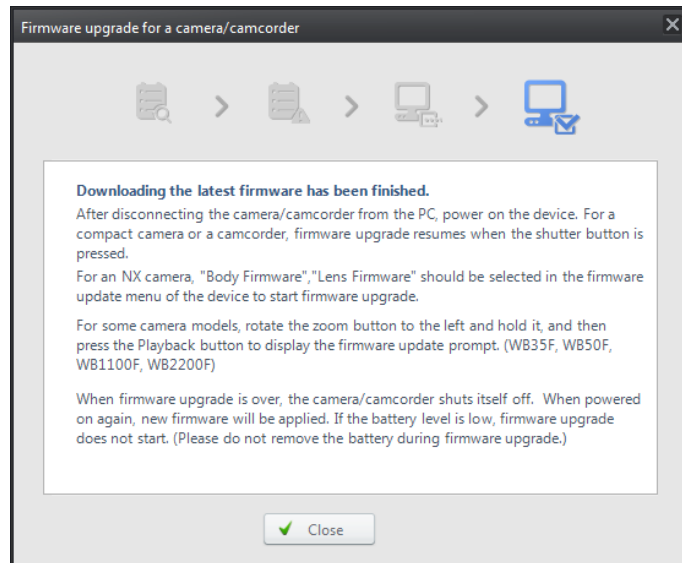
3. You can check precautions



4. Firmware download start



5. Once the transfer is complete,
click the Close button

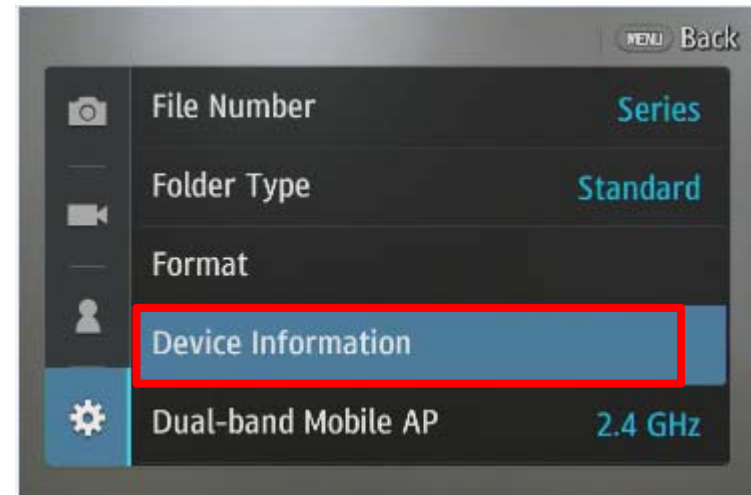


6. Terminate the USB cable connection

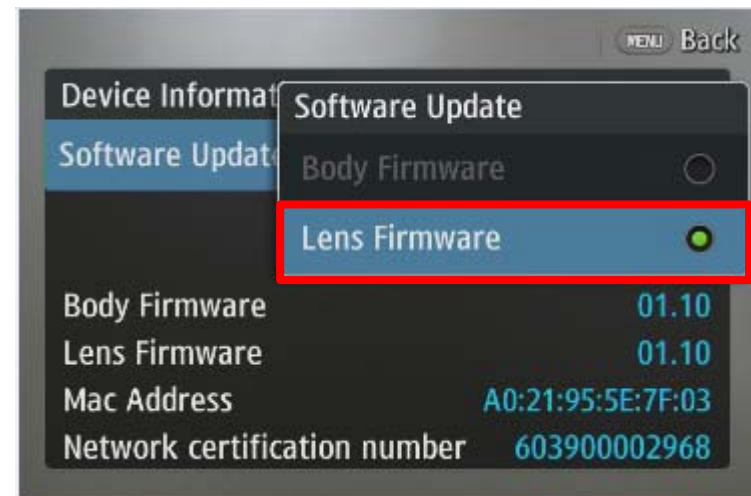
7. Turn the camera on

※ If you don't use i-Launcher but download
Firmware from Samsung.com homepage directly
→ unzip "zip" file & copy firmware file(lens.bin)
to SD card

8. Select the MENU → Setting
→ Device Information



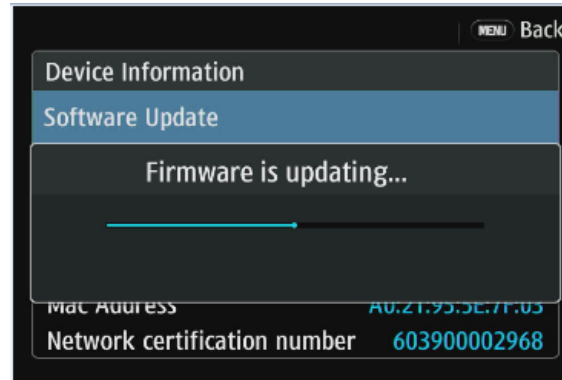
9. Select Software Update
→ Lens Firmware



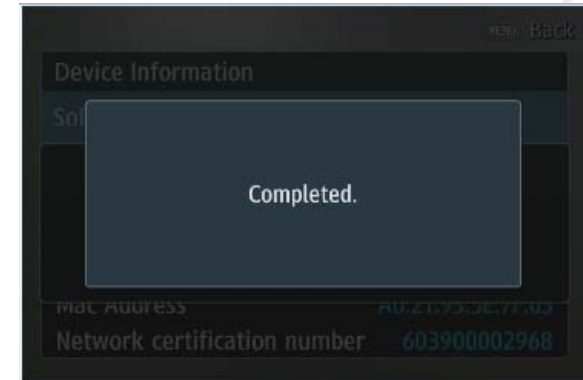
10. Update will start follow below sequence



- ① Firmware version checking
Press "Yes" → Upgrade start



- ② Firmware is updating...
→ You can see the updating status



- ③ Finish upgrade
→ You can see "Firmware update completed" message
※ If your camera stop or power-off during upgrading
→ Please retry upgrade