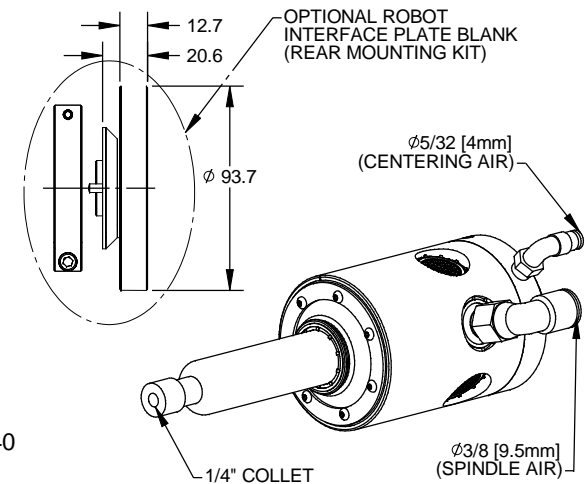
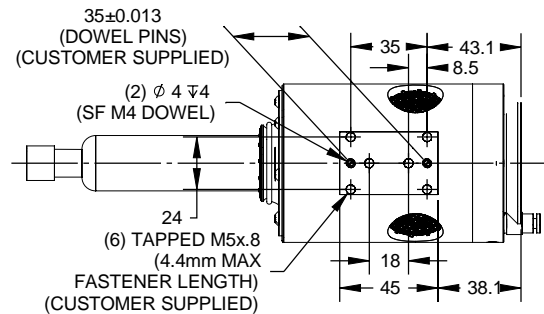
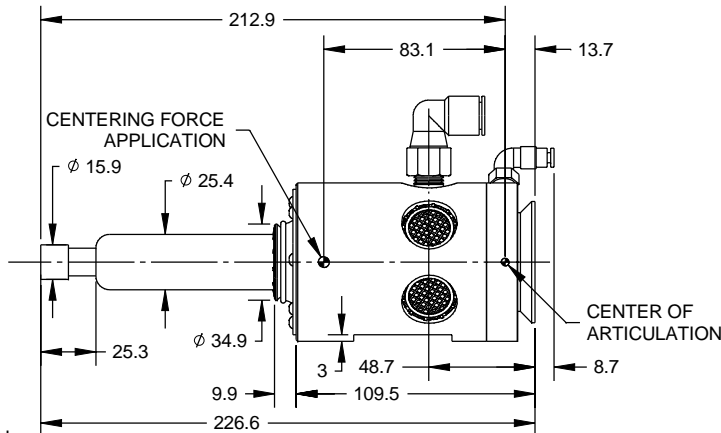
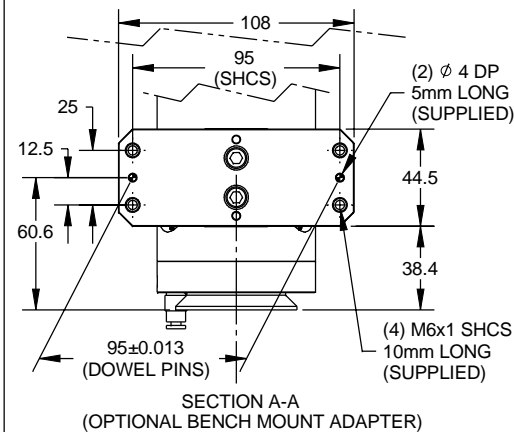
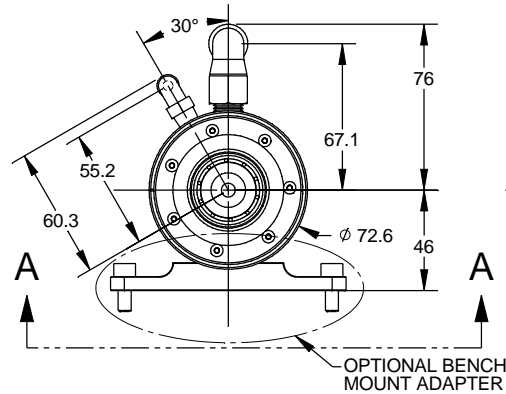


PROPERTY OF ATI INDUSTRIAL AUTOMATION, INC.
NOT TO BE REPRODUCED IN ANY MANNER EXCEPT ON
ORDER OR WITH PRIOR WRITTEN AUTHORIZATION OF ATI.

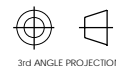


FLEXDEBURR-300 & FLEXDEBURR-340
ARE DIMENSIONALLY IDENTICAL

NOTES:

- 1) SPINDLE AIR SUPPLY TO BE REGULATED TO 6.2 BAR [90 PSI].
- 2) AIR SUPPLY TO BE FILTERED 5 MICRON OR BETTER, DRY, AND NON-LUBRICATED. (THE USE OF A COALESCING FILTER IS RECOMMENDED)
- 3) SPINDLE AIR CONSUMPTION 2.83 L/S [6 CFM] AT IDLE, 10.2 L/S [21.5 CFM] AT STALL.
- 4) SUPPLIED AIR FITTINGS MAY BE REMOVED TO UTILIZE CUSTOMER SUPPLIED 1/8NPT FITTINGS.
- 5) DO NOT USE LIQUID THREAD LOCKER ON MOUNTING FASTENERS, USE LOCK WASHERS.
- 6) DO NOT EXCEED THE MAXIMUM THREAD LENGTH SHOWN FOR MOUNTING FASTENERS.

NOTES: UNLESS OTHERWISE SPECIFIED
DO NOT SCALE DRAWING. DRAWN IN SOLIDWORKS.
ALL DIMENSIONS ARE IN MILLIMETERS.



1031 Goodworth Drive, Apex, NC 27539, USA
Tel: +1.919.772.0115 Email: info@ati-ia.com
Fax: +1.919.772.8259 www.ati-ia.com
ISO 9001 Registered Company

DRAWN BY: D.Lawson-6/2/04	TITLE: FLEXDEBURR-300 & -340		
CHECKED BY: J.Snape-6/3/04			
WEIGHT LBS: ---	SCALE: 1:2	SIZE: B	DRAWING NUMBER: 9230-50-1033-01
ASSEMBLY REF:	PRODUCT RELEASE #020718-2 DATE: 11/20/03 SHEET 1 OF 1		