



**COMMUNICATIONS RECEIVER
NACHRICHTENEMPFÄNGER
RECEPTEUR DE COMMUNICATIONS
RECEPTOR DE COMUNICACIONES**

Model R-2000



**INSTRUCTION MANUAL
BEDIENUNGSANLEITUNG
MODE D'EMPLOI
MANUAL DE INSTRUCCIONES**

GEMINI ELECTRONICS 1977 LTD.
81 VIEW RD, MT. EDEN
P.O. BOX 14-574 PANMURE
AUCKLAND

the HOLD switch stops the program scan. At hold, the frequency can be tuned within the range preset between memory channels 9 and 0 by using the tuning control. When the squelch opens during program scan in the FM mode, the BUSY indicator will light and scan will stop. When the squelch closes, the BUSY indicator will go off and scan resumes. When scan is held by opened squelch, depressing either the UP or DOWN switches restarts

scanning. With the UP or DOWN switch depressed, scan is continuous even when the squelch is opened. In AM, SSB, or CW modes, scan does not stop at a signal. If scan stop is desired, the jumper connection on the the RX Printed Board X55-1340-00 must be changed from the S1 to the S2 terminal. When operating this way, scan does not stop at the center tuning point. Depress the HOLD switch and tune precisely using the tuning control.

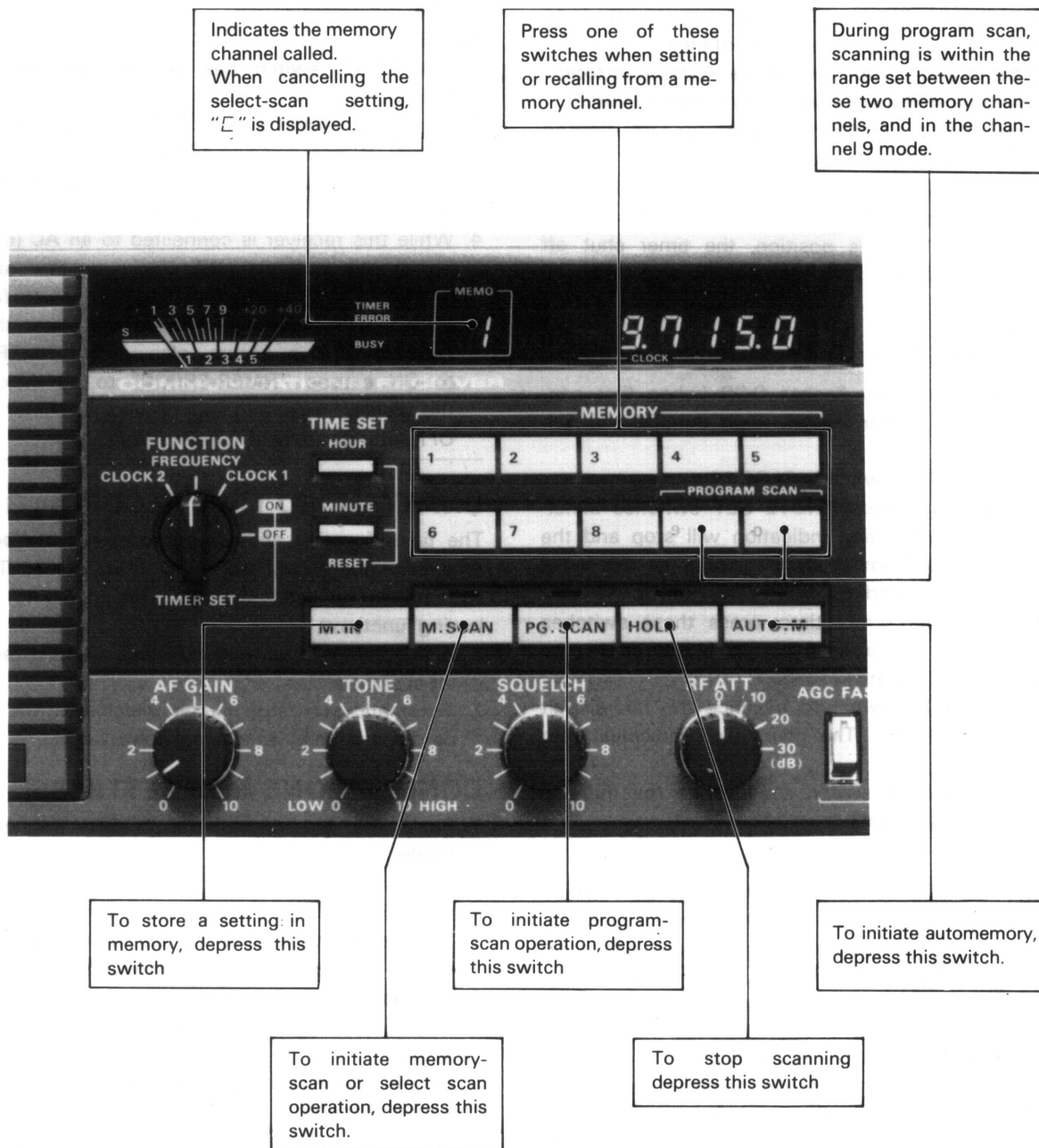


Fig. 4-1

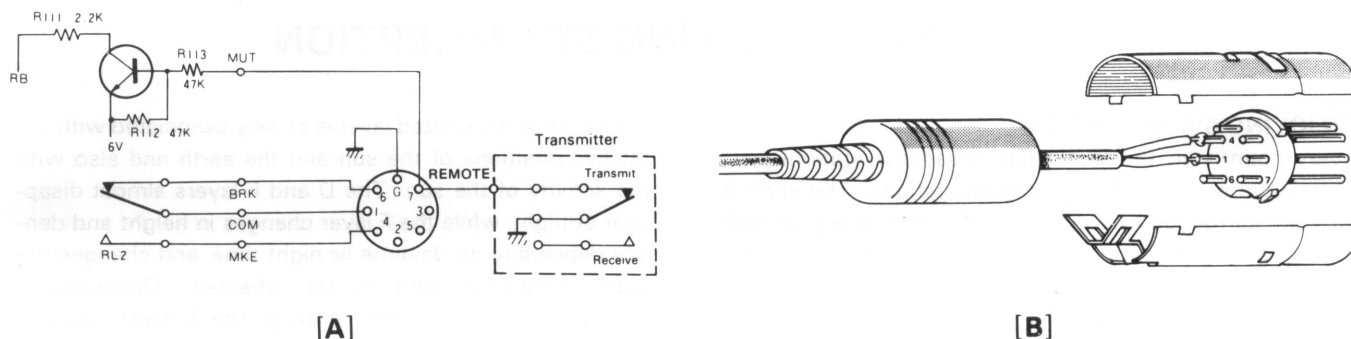


Fig. 5-1 Remote Terminal

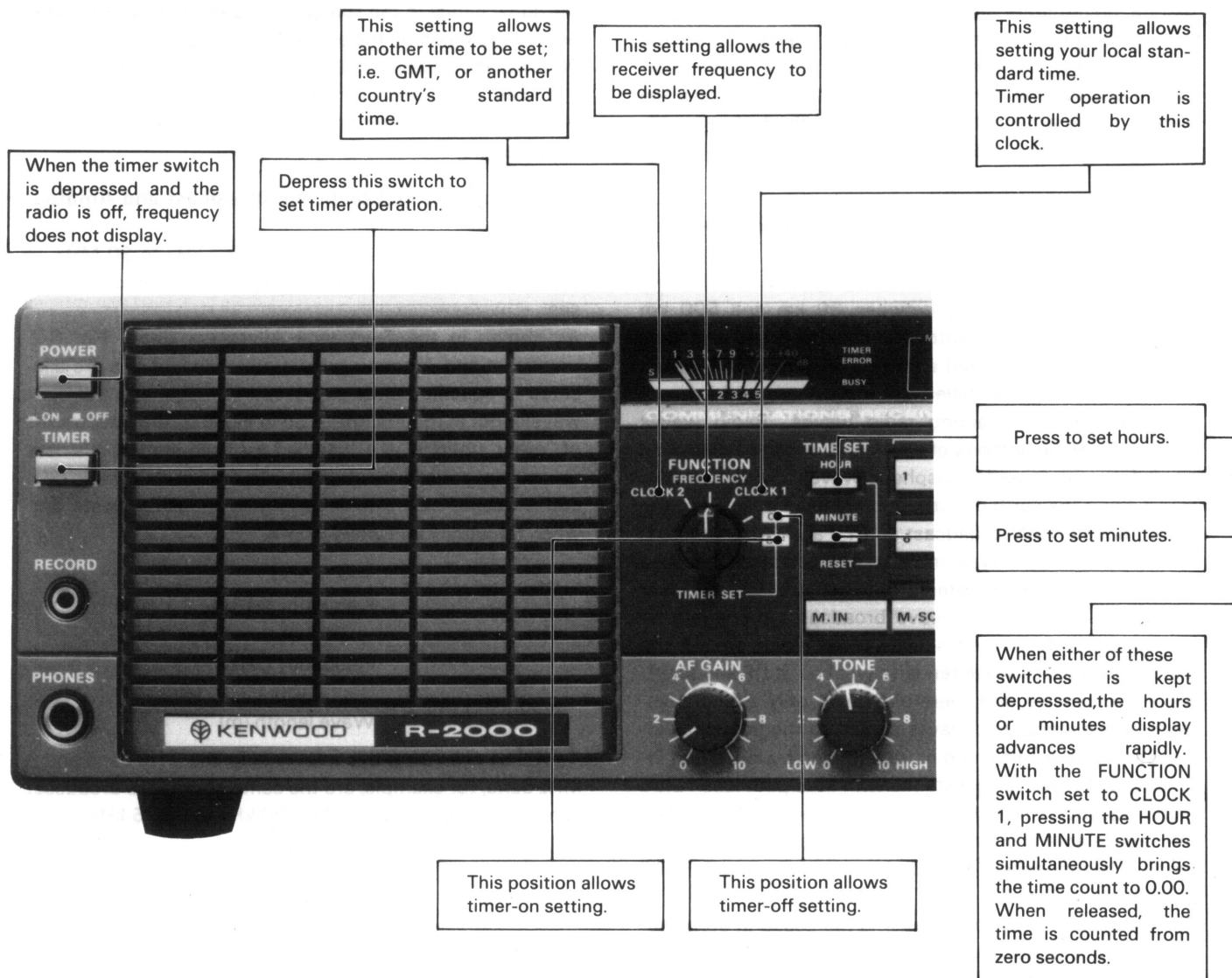


Fig. 5-2

SECTION 7. IN CASE OF DIFFICULTY

Synptom	Cause	Remedy
No dial illumination or reception with the POWER switch ON.	1. Bad power connection. 2. Blown fuse.	1. Check power connection. 2. Replace the fuse. (If the fuse blows again, consult your dealer.)
No reception or weak signal with an antenna connected.	1. Check RF ATT switch. 2. Squelch is on. 3. Antenna impedance does not match. 4. Open antenna fuse.	1. Correct RF ATT setting. 2. Turn the SQUELCH control counter-clockwise. 3. Choose the antenna terminal to match the antenna impedance. 4. Replace the fuse (100 mA fuse, only).
No dial illumination or reception with the POWER switch ON, but clock time displays.	● TIMER switch ON.	● Set the TIMER switch to OFF.
No reception. Frequency display shows 150.055.0.	● Memory back-up battery discharged.	● Replace battery and perform initial setup.
No reception. Frequency display and mode indicator malfunction.	● Microcomputer latchup.	● Reset the microcomputer. Refer to initial setup.

NOTE:

When tuning across a strong station, a "click" may be heard. This is normal, and not a malfunction.

INITIAL SETUP

1. Disconnect the power cable with the POWER switch ON.
2. Remove the receiver top cover (8 screws).
3. Ground pin 40 of IC-12 on the PLL unit for about 5 seconds.
4. Reconnect power.
5. Keep the M.IN switch depressed and ground pin 29 of IC-12 for a few seconds.
6. Remove and then reinsert the power cord.

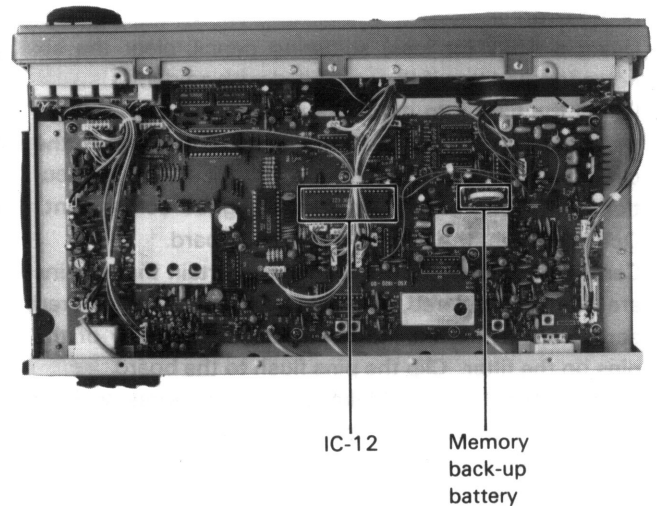


Fig. 7-1