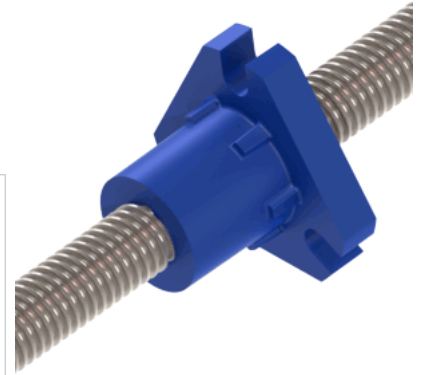
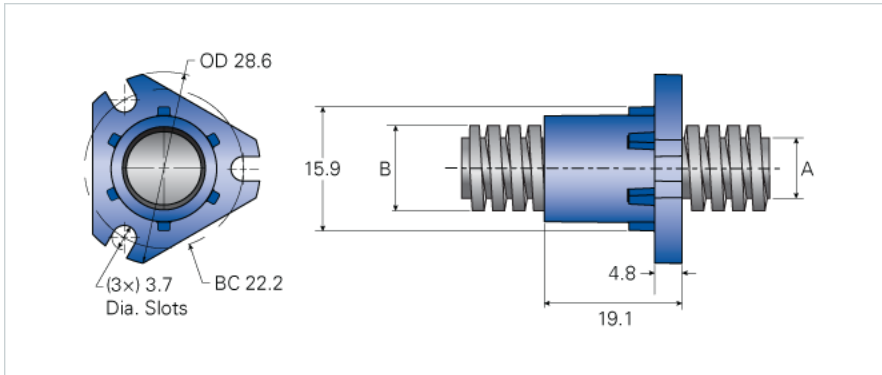


## Metric Flanged Standard Lead Screw Assembly 8 mm x 10 mm S

Call 855-HELIXLT or visit us online at [www.helixlinear.com](http://www.helixlinear.com) to configure and order your Metric Flanged Standard Lead Screw Assembly 8 mm x 10 mm S today!



Metric Lead Screw	
<b>Product Info</b>	
Part Number	032393S
Thread Direction	RH/LH
Screw Material	Stainless Steel
<b>Details</b>	
Lead [mm]	10.00
Starts	4
Pitch [mm]	2.5
Diameter [mm]	8
End Code for Types 1,2,3,5 [* Journals may show tracings of the thread]	5
End Code for Type 4 [* Journals may show tracings of the thread]	2
Diameter Code	032
Lead Code	393
<b>Dimensions</b>	
A [mm]	5.50
B [mm]	8.20
<b>Performance Specifications</b>	
Efficiency [%]	65-81
Lead Accuracy +/- [in/in]	0.0003
Metric Flanged Standard Lead Nut	
<b>Product Info</b>	
Part Number	NFA032393
Thread Direction	RH/LH
Type	Acetal
<b>Details</b>	
Lead [mm]	10.00
Starts	4
Pitch [mm]	2.50
Diameter [mm]	8
Diameter Code	032
Lead Code	393
<b>Forces and Torques</b>	
Torque to Raise 1 lb. [in-lb]	0.086
<b>Flange Part Numbers</b>	
Flange Part Number	n/a
<b>Weight</b>	
Flange Weight [lb]	n/a
Nut Weight [oz]	0.18
<b>Performance Specifications</b>	
Efficiency [%]	65-81
Lead Accuracy +/- [in/in]	0.0003
Dynamic Load Capacity [lb]	122
Static Load Capacity [lb]	610