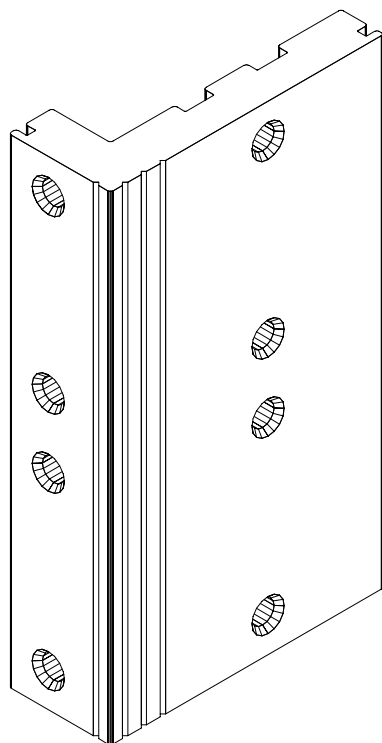


Rack Angle - Type 393



Illustrated Model = RA393-2U-4SH-AN...

This 50x19mm **Light Weight RACK ANGLE** (precision drilled and tapped on our purpose built Numeric Controlled Machine) has been designed to satisfy general purpose applications for 19" Equipment Racking for Audio, Industrial, Telecommunications, Data Systems and other Apparatus conforming to EIA & IEC Standards.

The basic Extrusion provides a versatile and economic component for building into Customers existing or special consols/enclosures or when using CASA's proprietary accessories can provide fully modular **Rack Frames, Rack Cabinets, Rack Consols** etc.

The slotted edges can accommodate low cost covers, blanking panels or shielding panels and when ordered with **SIDE HOLES**, CASA's proprietary side panels and filler strips provide a professional fully enclosed Rack Cabinet. Accessories, including Castors, Leveling Screws, Doors, Shelves, Support Brackets, Lacing Bars etc. are available and new items are continually being developed to provide further solutions to Customers needs (full details are available on separate leaflets available upon request). Custom design can be undertaken by CASA to suit special requirements. Please enquire giving details of desired features and facilities, quantities etc.

CASA has 20 years experience in producing professional quality RACKs, Cabinets, Card Frames, Panels and related Accessories and is happy to discuss adaptations of CASA standard extrusions, new designs and any other variations or features which you may require.

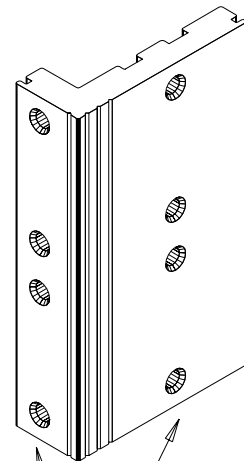
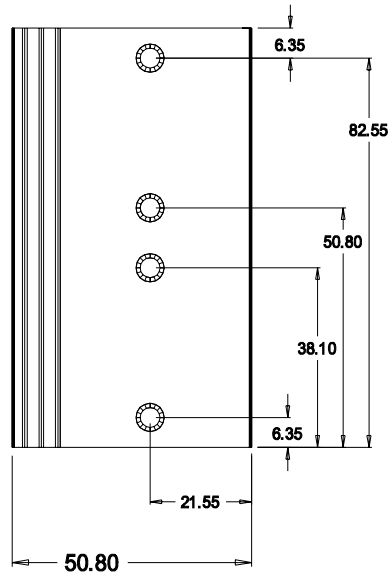
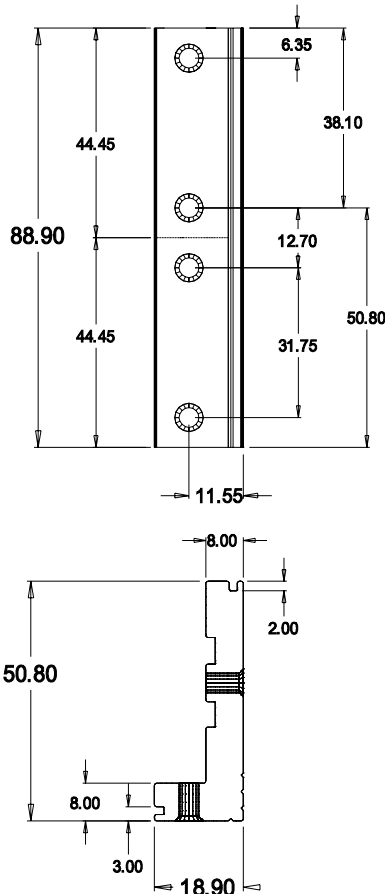
Brief Specification Details: (see drawings for general dimensions and practical arrangements)

➡	Standard Lengths:	2, 4, 6, 8, 10 Units 20 Units 30 Units 50 Units
➡	Special Lengths to order:	1-50 Units (44.45mm)
➡	Cutting Tolerance:	+/- 0.1mm (or +/- 0.25 from 500mm)
➡	Finishes: (anodizing strenghtens the tapped holes) (full deburring of all holes & edges is standard)	Anodized (or <i>natural to order</i>) (<i>anodizing is 12/15 microns</i>)
➡	Fixing Holes: (available drilled/tapped on front and/or side "SH")	M5x0.8 ISO (<i>other Threads to order</i>)
➡	Hole Centres: (our NC Machine has HIGH Precision Leadscrew)	1.250+ 0.500" alternating (<i>other intervals to order</i>)
➡	Weight:	1.256 Kg/metre
➡	Periphery: (multiply by length for surface area)	153.4 mm
➡	Crossection: (sectional area of extrusion)	463.4 sq mm
➡	Material: (Extruded Aluminum Alloy to BS-1474)	AA6063-T5

Intelligent Part Number: RA-393-xxU-yySH-F(special adder/suffix)

Please compose a Part Number according to this system and use on your official order.

RA-	Prefix to indicate "RACK ANGLE" or related products or accessories.
393-	CASA's EXTRUSION or TYPE / Reference number.
xxU-	Overall cut LENGTH in exact RACK Units (actual length = xxU x 44.45 millimeters).
yySH-	Number of SIDE HOLES (2 per rack Unit) or Filler Strip or end holes provided for cabinet rack
F-	The FINISH applied to the part (NA=Natural, AN=Mat Anodized)
(-----)	Special adder or other suffix for custom reference detail.



**M5x0.8 ISO Tapped Holes
Front & Side (optional)**

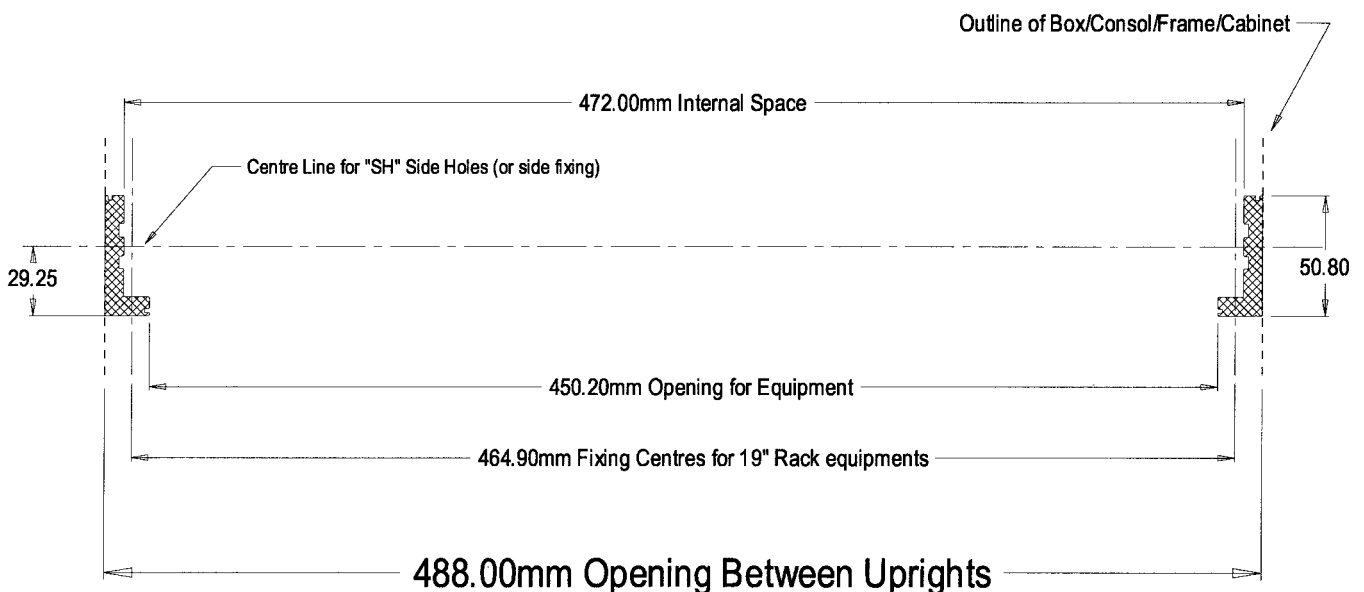
**NOTE:- The drawing illustrates a "2U" portion of Rack Angle.
CASA Part No. RA-393-2U-4SH-NA(M5x0.8) showing "Side Holes".**

MATERIAL	Extrusion
No.	0393
ALLOY	6063-T5
EST. AREA	463.4 mm
EST. WEIGHT	1.258 kg/m
EST. PERIPHERY	EXT: 143.4 mm
TOT:	144 mm
TOLERANCE	0-100mm ±0.1mm 100-250mm ±0.25mm 250-500mm ±0.5mm 500-800mm ±0.75mm 800-1000mm ±1.0mm
BS1474:1987	APPLIES UNLESS OTHERWISE SPECIFIED
JOB No.	23xx

CASA Modular Systems	CUSTOMER : CASA Modular Systems	SIZE	DRAWING Reference No.	ISSUE
P.O. BOX 38-828, WELLINGTON, NEW ZEALAND	DESCRIPTION : Angle RACK Light Weight	A4	RA-393	A
TELEPHONE : (64-4) 9393 777	DRAWN : AWD	DATE : 06/06/00	APPROVED : ?	DWG. SCALE : 1:1
FACSIMILE : (64-4) 9393 778				© COPYRIGHT : CASA Modular Systems
				ALL RIGHTS RESERVED

FREE - FREE - FREE - FREE - FREE sample of the RA-393 extrusion is available upon request

**General Arrangement for Fixing RA-393 Light Weight Rack Angle to make into
Custom 19" Rack Enclosure or Frame/box/cabinet/console etc.**



CASA Modular Systems	CUSTOMER : CASA Modular Systems	SIZE	DRAWING Reference No.	ISSUE
P.O. BOX 38-828, WELLINGTON, NEW ZEALAND	DESCRIPTION : 19" Rack Angle FIXING details	A4	RA393-FX	A
TELEPHONE : (64-4) 9393 777	DRAWN : AWD	DATE : 22/09/97	APPROVED : ?	DWG. SCALE : 1:1
FACSIMILE : (64-4) 9393 778				© COPYRIGHT : CASA Modular Systems
				ALL RIGHTS RESERVED