

#### NOTES:

1. INSTALLATION SHALL COMPLY WITH ALL APPLICABLE NATIONAL, STATE AND LOCAL ELECTRICAL REGULATIONS.
2. REFER TO PRODUCT DOCUMENTATION FOR ADDITIONAL DETAILS PRIOR TO INSTALLATION AND SITE PREPARATION WORK.
3. ALL DIMENSIONS ARE IN MILLIMETERS [INCHES].
4. FRONT AND REAR ACCESS REQUIRED FOR SERVICE. MINIMUM REQUIRED FRONT/REAR CLEARANCE IS 914 [36.0].
5. NET WEIGHT OF THE UNIT IS 170.9 kg [376.7 lb].
6. TOP AND BOTTOM CABLE ENTRY USING APPROPRIATE CUSTOMER PROVIDED SOLUTION.
8. AIR FLOW AND SERVICE REQUIREMENTS, AS WELL AS MINIMUM CLEARANCE TO FIRE SUPPRESSION SYSTEMS SHOULD BE CONSIDERED WHEN LOCATING THE ENCLOSURE.
9. PROTECTION CLASS: IP20.
10. COLOR: RAL 9005 BLACK.

THIS DRAWING AND SPECIFICATIONS HEREIN ARE THE PROPERTY OF SCHNEIDER ELECTRIC AND SHALL NOT BE COPIED, REPRODUCED OR USED IN WHOLE OR IN PART, AS THE BASIS FOR THE MANUFACTURE OR SALE OF ITEMS WITHOUT WRITTEN PERMISSION FROM SCHNEIDER ELECTRIC. THIS DRAWING IS BASED UPON LATEST AVAILABLE INFORMATION AND IS SUBJECT TO CHANGE WITHOUT NOTICE.

**Schneider**  
**Electric**

TITLE: APC NetShelter SX SERVER RACK GEN 2  
42U, 750mm WIDE x 1200mm DEEP  
PERFORATED DOOR  
GENERAL ARRANGEMENT

DWG NO: **AR3350B2**

REV. **0**

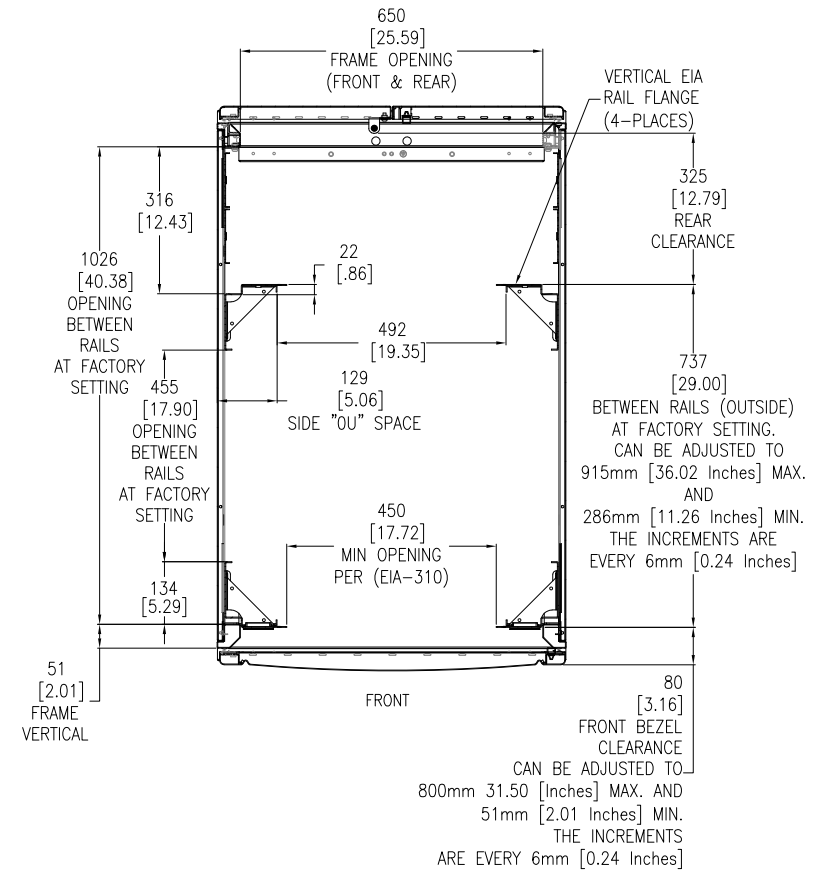
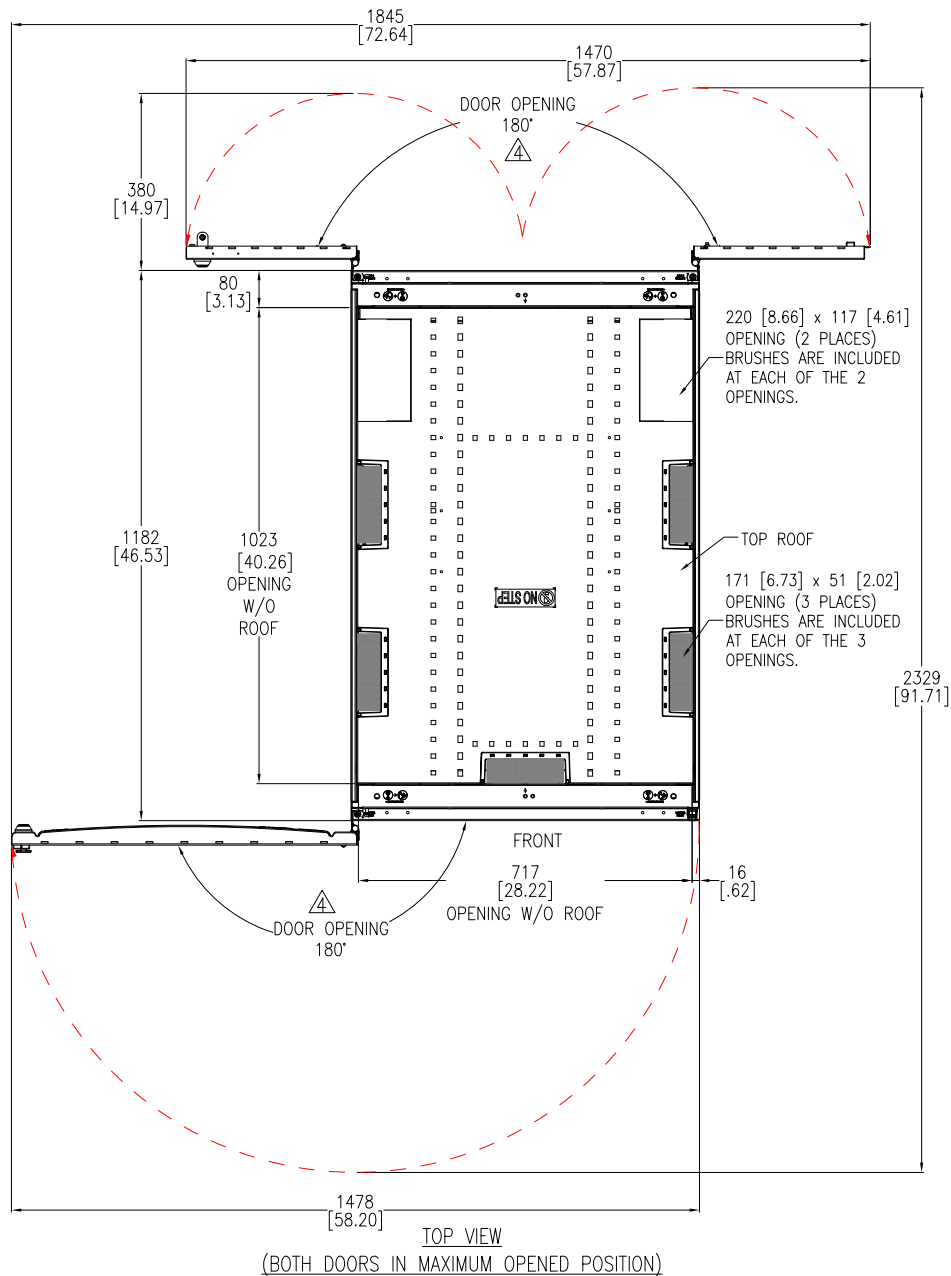
DRAWN BY: ASHISH/JAYAPRAKASH 05-MAR-24

ENGINEER: KIRK SHI 18-MAR-24

APPROVED BY: KIRK SHI 18-MAR-24

PROJECT: SUBMITTAL DRAWINGS SHEET 1 OF 4

FIRST  
ANGLE  
PROJECTION



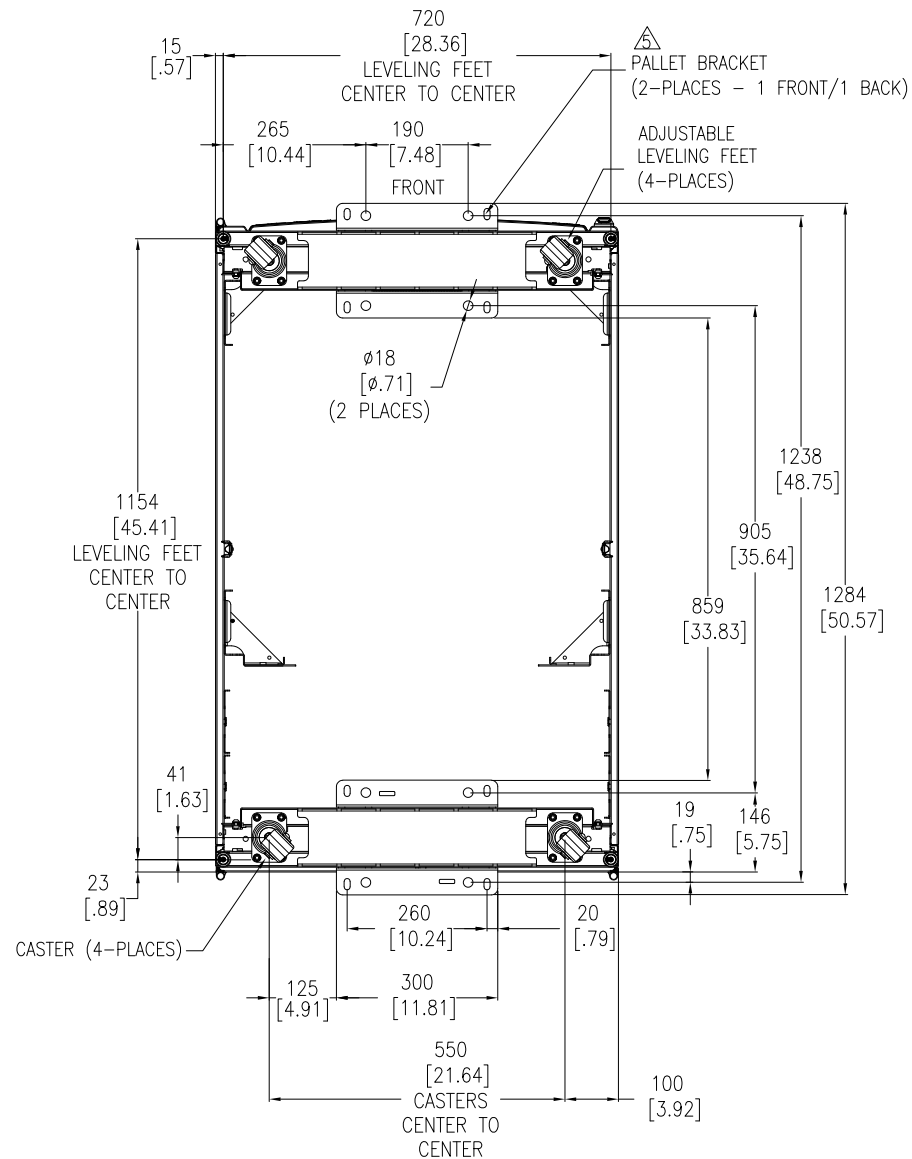
SECTION B-B  
STANDARD POSITIONS FOR MOUNTING RAILS AND  
THEIR ADJUSTABILITY (LOOKING DOWN)

- NOTES:
1. INSTALLATION SHALL COMPLY WITH ALL APPLICABLE NATIONAL, STATE AND LOCAL ELECTRICAL REGULATIONS.
  2. REFER TO PRODUCT DOCUMENTATION FOR ADDITIONAL DETAILS PRIOR TO INSTALLATION AND SITE PREPARATION WORK.
  3. ALL DIMENSIONS ARE IN MILLIMETERS [INCHES].
  4. FRONT AND REAR DOOR OPENING SHOWN IS 180°. MAXIMUM DOOR SWING CAN BE UP TO 266°.
  5. SOME STRUCTURAL DETAILS HAVE BEEN OMITTED FOR THE PURPOSE OF CLARITY.

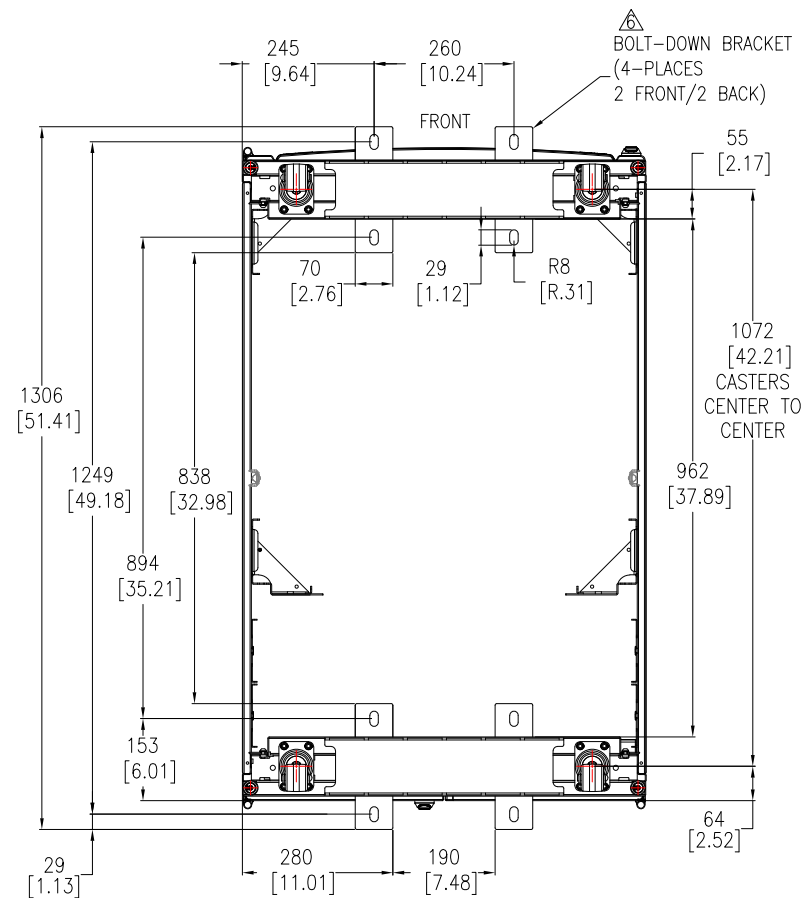
THIS DRAWING AND SPECIFICATIONS HEREIN ARE THE PROPERTY OF SCHNEIDER ELECTRIC AND SHALL NOT BE COPIED, REPRODUCED OR USED IN WHOLE OR IN PART, AS THE BASIS FOR THE MANUFACTURE OR SALE OF ITEMS WITHOUT WRITTEN PERMISSION FROM SCHNEIDER ELECTRIC. THIS DRAWING IS BASED UPON LATEST AVAILABLE INFORMATION AND IS SUBJECT TO CHANGE WITHOUT NOTICE.

**Schneider**  
**Electric**

TITLE: APC NetShelter SX SERVER RACK GEN 2 42U, 750mm WIDE x 1200mm DEEP PERFORATED DOOR TOP & SECTION VIEWS PROJECT: SUBMITTAL DRAWINGS SHEET 2 OF 4	DWG NO:	AR3350B2	REV:	0
	DRAWN BY:	ASHISH/JAYAPRAKASH	05-MAR-24	FIRST
	ENGINEER:	KIRK SHI	18-MAR-24	ANGLE
	APPROVED BY:	KIRK SHI	18-MAR-24	PROJECTION



**BOTTOM VIEW**  
(WITH PALLET BRACKETS, CAN BE USED FOR ANCHORING)  
TOP ROOF NOT SHOWN



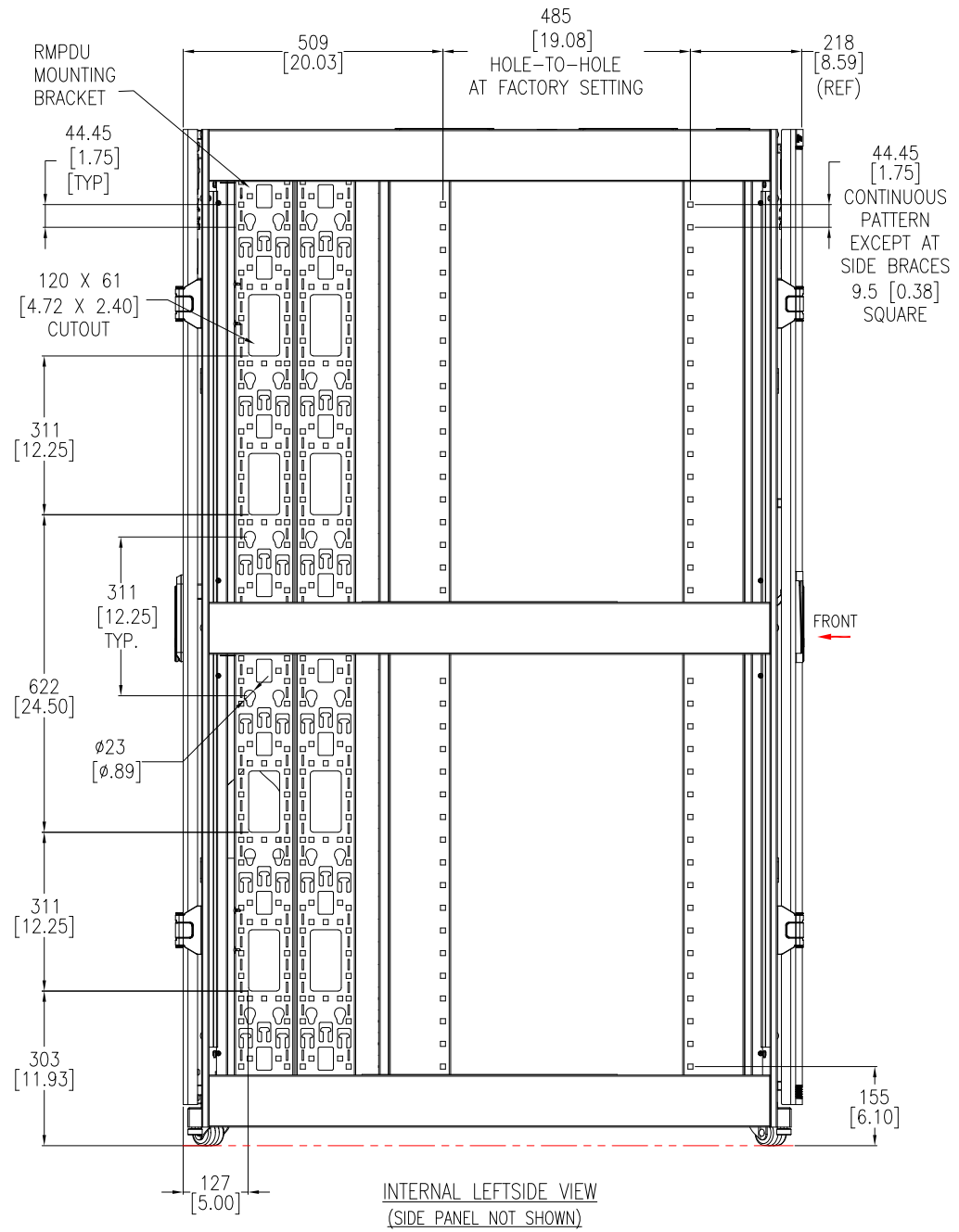
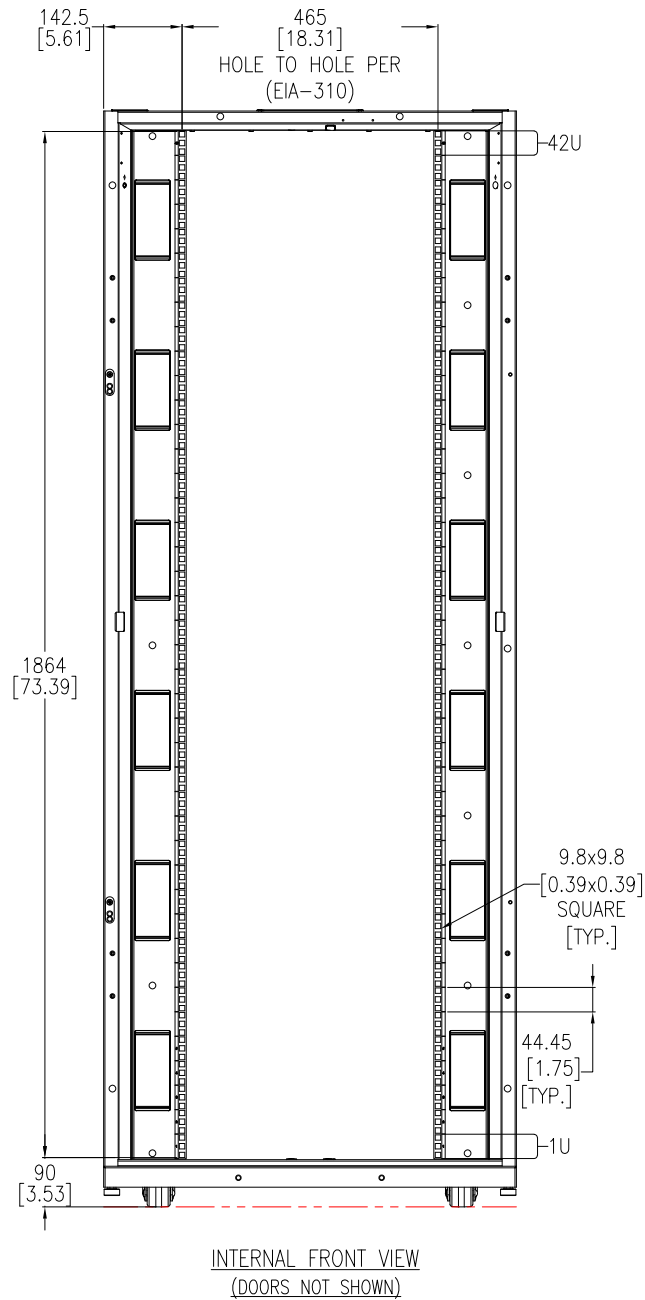
**BOTTOM VIEW**  
(WITH OPTIONAL BOLT-DOWN BRACKETS FOR ANCHORING)  
TOP ROOF NOT SHOWN

- NOTES:**
1. INSTALLATION SHALL COMPLY WITH ALL APPLICABLE NATIONAL, STATE AND LOCAL ELECTRICAL REGULATIONS.
  2. REFER TO PRODUCT DOCUMENTATION FOR ADDITIONAL DETAILS PRIOR TO INSTALLATION AND SITE PREPARATION WORK.
  3. ALL DIMENSIONS ARE IN MILLIMETERS [INCHES].
  4. SOME STRUCTURAL DETAILS HAVE BEEN OMITTED FOR THE PURPOSE OF CLARITY.
- ANCHORING CAN BE INSTALLED EITHER INSIDE OR OUTSIDE THE NetShelter WITH ONE AT FRONT AND ONE IN BACK.
- BOLT-DOWN KIT (SKU# AR7701) IS OPTIONAL AND HAS TO BE ORDERED SEPARATELY.

THIS DRAWING AND SPECIFICATIONS HEREIN ARE THE PROPERTY OF SCHNEIDER ELECTRIC AND SHALL NOT BE COPIED, REPRODUCED OR USED IN WHOLE OR IN PART, AS THE BASIS FOR THE MANUFACTURE OR SALE OF ITEMS WITHOUT WRITTEN PERMISSION FROM SCHNEIDER ELECTRIC. THIS DRAWING IS BASED UPON LATEST AVAILABLE INFORMATION AND IS SUBJECT TO CHANGE WITHOUT NOTICE.

**Schneider**  
**Electric**

TITLE: APC NetShelter SX SERVER RACK GEN 2		DWG NO:	AR3350B2	REV:	0
42U, 750mm WIDE x 1200mm DEEP		DRAWN BY: ASHISH/JAYAPRAKASH		05-MAR-24	
PERFORATED DOOR		ENGINEER:		KIRK SHI	
ANCHORING DETAILS		APPROVED BY:		KIRK SHI	
PROJECT: SUBMITTAL DRAWINGS		SHEET 3 OF 4		18-MAR-24	
				FIRST ANGLE PROJECTION	



- NOTES:
1. INSTALLATION SHALL COMPLY WITH ALL APPLICABLE NATIONAL, STATE AND LOCAL ELECTRICAL REGULATIONS.
  2. REFER TO PRODUCT DOCUMENTATION FOR ADDITIONAL DETAILS PRIOR TO INSTALLATION AND SITE PREPARATION WORK.
  3. ALL DIMENSIONS ARE IN MILLIMETERS [INCHES].
  4. SOME STRUCTURAL DETAILS HAVE BEEN OMITTED FOR THE PURPOSE OF CLARITY.

THIS DRAWING AND SPECIFICATIONS HEREIN ARE THE PROPERTY OF SCHNEIDER ELECTRIC AND SHALL NOT BE COPIED, REPRODUCED OR USED IN WHOLE OR IN PART, AS THE BASIS FOR THE MANUFACTURE OR SALE OF ITEMS WITHOUT WRITTEN PERMISSION FROM SCHNEIDER ELECTRIC. THIS DRAWING IS BASED UPON LATEST AVAILABLE INFORMATION AND IS SUBJECT TO CHANGE WITHOUT NOTICE.

**Schneider**  
**Electric**

TITLE: APC NetShelter SX SERVER RACK GEN 2		DWG NO:	AR3350B2	REV:	0
42U, 750mm WIDE x 1200mm DEEP		DRAWN BY: ASHISH/JAYAPRAKASH			
PERFORATED DOOR		05-MAR-24			
INTERNAL VIEWS		ENGINEER: KIRK SHI			
PROJECT: SUBMITTAL DRAWINGS		18-MAR-24			
SHEET 4 OF 4		APPROVED BY: KIRK SHI			
		18-MAR-24			
		FIRST ANGLE PROJECTION			