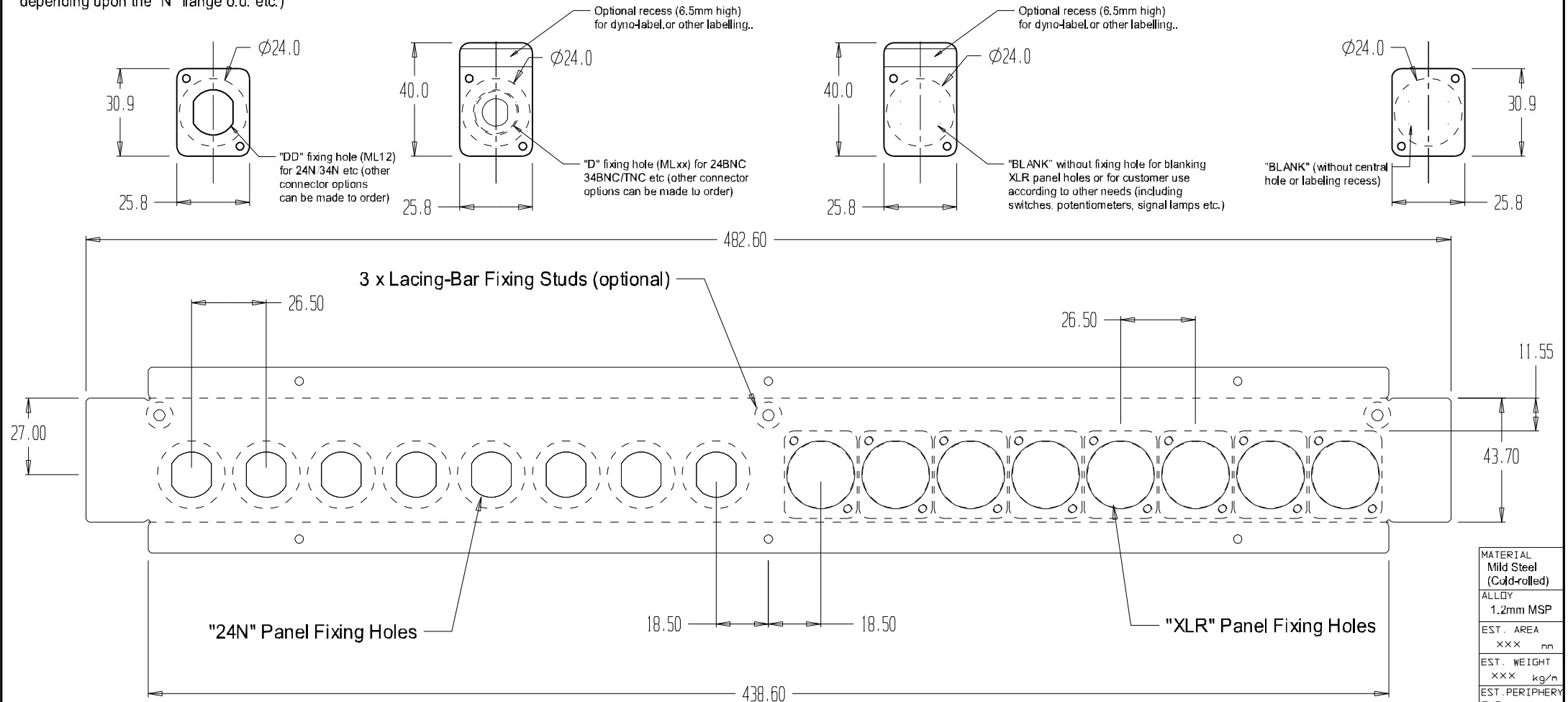


Adaptor plate to convert "XLR" panel holes to suit series "N" panel recepticals or 24/N34N thru-adaptors etc.(front/rear mountable depending upon the "N" flange o.d. etc.)



#### Notes:

- 1) Rack fixing holes not shown in this drawing (they are punched after the blanked panel flanges are folded down.
- 2) The 'Adaptor-Plates' are able to be produced in a wide variety of other connectors so and to provide a mix and match without expensive costs small batch production..

|                |  |
|----------------|--|
| MATERIAL       | Mild Steel (Cold-rolled)   |
| ALLOY          | 1.2mm MSP  |
| EST. AREA      | xxx mm   |
| EST. WEIGHT    | xxx kg/m   |
| EST. PERIPHERY | EXT: xxx mm  |
| TOT: xxx mm    |  |
| TOLERANCE      | 0.00mm ±0.1mm<br>00.0mm ±0.25mm<br>0000mm ±0.5mm<br>0-600mm ±0.1mm<br>> 600mm ±0.5mm |
| BS1474:1987    | APPLIES UNLESS OTHERWISE SPECIFIED   |
| JOB No.        | TBA  |

|                                      |
|--------------------------------------|
| <b>CASA</b> Modular Systems          |
| Petone 5012, WELLINGTON, NEW ZEALAND |
| TELEPHONE : (64-4) 9393 777          |
| Internet : www.casa.co.nz            |

|               |                                   |
|---------------|-----------------------------------|
| CUSTOMER :    | CASA Modular Systems              |
| DESCRIPTION : | 1U PP with 24N + 23XLR Connectors |
| DRAWN :       | A.W.D                             |
| DATE :        | 1/07/25                           |
| APPROVED :    | ?                                 |
| DWG. SCALE :  | 1:1                               |

|      |                                  |                     |
|------|----------------------------------|---------------------|
| SIZE | DRAWING Reference No.            | ISSUE               |
| A4   | PP1U-MS12-MixA                   |                     |
| ©    | COPYRIGHT : CASA Modular Systems | ALL RIGHTS RESERVED |