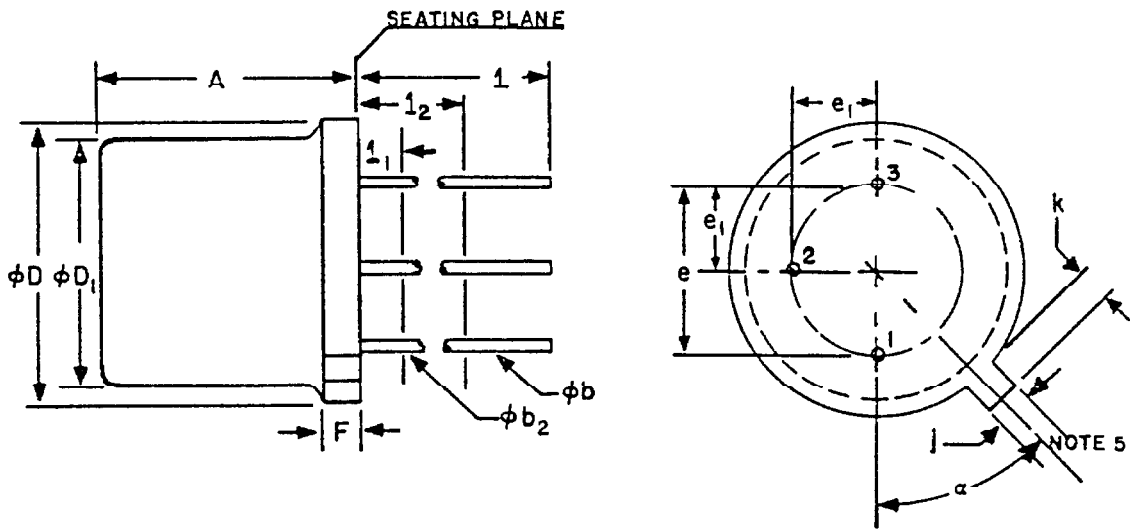


TO-18



SYMBOL	INCHES		MILLIMETERS		NOTES
	MIN.	MAX.	MIN.	MAX.	
A	.170	.210	4.32	5.33	
ϕb	.016	.021	.406	.533	1
ϕb_2	.016	.019	.406	.483	1
ϕD	.209	.230	5.31	5.84	
ϕD_1	.178	.195	4.52	4.95	
e	.100 T.P.		2.54 T.P.		2, 4
e_1	.050 T.P.		1.27 T.P.		2, 4
F		.030		.762	
j	.036	.046	.914	1.17	4
k	.028	.048	.711	1.22	3
1	.500		12.70		1
1_1		.050		1.27	1
1_2	.250		6.35		1
α	45° T.P.				5

NOTES:

- (THREE LEADS) ϕb_2 APPLIES BETWEEN 1_1 AND 1_2 . ϕb APPLIES BETWEEN 1_2 AND .5" (12.70 MM) FROM SEATING PLANE. DIAMETER IS UNCONTROLLED IN 1_1 AND BEYOND .5" (12.70 MM) FROM SEATING PLANE.
- LEADS HAVING MAXIMUM DIAMETER .019" (.483 MM) MEASURED IN GAGING PLANE .054" (1.37 MM) + .001" (.025 MM) - .000" (.000 MM) BELOW THE SEATING PLANE OF THE DEVICE SHALL BE WITHIN .007" (.178 MM) OF THEIR TRUE POSITIONS RELATIVE TO A MAXIMUM-WIDTH TAB.
- MEASURED FROM MAXIMUM DIAMETER OF THE ACTUAL DEVICE.
- THE DEVICE MAY BE MEASURED BY DIRECT METHODS OR BY THE GAGE AND GAGING PROCEDURE DESCRIBED ON GAGE DRAWING GS-2.
- TAB CENTERLINE.